



## EQUIPMENT SPEC'S

RE: TRUCK UNLOAD METER QUOTATION

QUOTE DATE: 2-Mar-12

REFERENCE #: 20120130 CHE

## SKID INFORMATION

### 6' x 12' STRUCTURAL STEEL SKID

1/4" CHECKER PLATE SLIP RESISTANT FLOOR, SEAL WELDED

2" SPRAY ON INSULATION ON UNDERSIDE OF SKID

4 - LIFTING LUGS

SAND BLASTED TO SSPC - SP6 SPECIFICATION

PAINTED WITH 2 COATS OF ENAMEL

## PIPING INFORMATION

### PIPING AS PER SUPPLIED P&ID # AND INFORMATION LISTED BELOW

BUILT IN ACCORDANCE WITH ASME B31.3 - 2010 EDITION TO

ROTATING RIGHT PIPE SPECIFICATION #RRSS01

CORROSION ALLOWANCE 1/8", RADIOGRAPHY 100% PWHT 100%

SANDBLASTED AND PAINTED TO ROTATING RIGHT PAINT SPECIFICATION #RRSPS

PRICING INCLUDES PIPE, FITTINGS, GASKETS, STUDS & NUTS, QUALITY CONTROL, X-RAY, HYDROTESTING, BLEED RINGS, PIPE STANDS, MISCELLANEOUS HARDWARE, ASSEMBLY, WELDING, ENGINEERING & DESIGN

## BUILDING INFORMATION

### 6'x 12' x 8'6" EAVE ALMAC SHED STYLE SELF-FRAMING BUILDING

22 GA. GALVALUME ROOF EXTERIOR WITH R-20 FIBERGLASS INSULATION

24 GA. FLUTED ALUMINUM NATURAL ROOF INTERIOR (6 mill POLY) JOINTS TAPED

22 GA. GALVALUME EXTERIOR WALLS WITH R-12 FIBERGLASS INSULATION

24 GA. FLUTED ALUMINUM NATURAL WALL INTERIOR (6 mill POLY) JOINTS TAPED

1 EA - 3'x 7' 20 GA. DOOR c/w 16 GA FRAME, HGS, WS, CC, THRESHOLD AND SWEEP

LOCKING PANIC HARDWARE (VON DUPRIN 44TP)

24" x 24" IWG GLAZED WINDOW IN DOOR

HYDRAULIC CLOSURE

CANOPY FOR DOOR

1 EA - 32' x 36" DOUBLE GLAZED SLIDE WINDOWS c/w 1/2 SCREEN (PLAIN GLASS)

1 EA - 12" x 12" MANUALLY ADJUSTABLE LOUVRES (XF-344-O) c/w BIRDSCREEN

CADMIUM PLATED SCREWS

\* 12 x 24 CATADYNE HEATER LPG /

## DATA PACKAGE

### COMPLETE DATA PACKAGE

INCLUDING AS BUILT P&ID AND LAYOUT DRAWINGS, MILL TEST CERTIFICATES, TESTING AND X-RAY RESULTS, ALL RELEVANT QC/QA DOCUMENTATION, MAJOR MATERIAL DOCUMENTATION & PARTS LISTS



## EQUIPMENT SPEC'S

RE: TRUCK UNLOAD METER QUOTATION

QUOTE DATE: 2-Mar-12

REFERENCE #: 20120130 CHE

## METERING PACKAGE

### TUS-FLOBOSS107 SPARTAN TRUCK UNLOAD PANEL

TUS107 PANEL

FLOBOSS107 VERSION PANEL SW NOT INC - NO MMI TRANS

MI-NOC-SOFTWARE SPARTAN TRUCK UNLOAD PANEL

NOC SOFTWARE BY MI

TUSMANUAL-FLOBOSS107 PRODUCT DOCUMENTATION

MI TRUCK UNLOADING FLOBOSS107 SYSTEM MANUAL

RC200B SPARTAN TRUCK UNLOAD PANEL

BLACK RIBBON FOR 200/500 SERIES STAR PRINTER

RF3.0-2P SPARTAN TRUCK UNLOAD PANEL

STAR SP200/500 PRINT PAPER 2 PLY 3" WIDTH

### 3" ELITE SERIES MICROMOTION WITH 2500 TRANSMITTER

CMF300M355N2BAEZZZ MICROMOTION 3" 316 SENSOR

MICROMOTION 3" 316L SENSOR

2500D3ACBAEZCZ MICROMOTION MVD MULTI TX

MICROMOTION MVD MULTI TX

### DREXELBROOK CUT MONITOR

509-00/700-1202-001-1030.0BA0-10.0/285-0003-022

AMETEK/DREXELBROOK UNIVERSAL 111 CUT MONITOR 30"IL 10"CS

### SOLENIOD VALVE

EF8210G038 ASCO

3/4" NPT SST 120VAC EPNO 2-WAY(150)

### ROSEMOUNT VIBRATING FORK

ROSEMOUNT 2120 - 6" VIBRATING FORK

### RTD ELEMENT

100 TO 260C 2.5" TWELL, 0.75" PROC CONN - 3 WIRE

### GROUND PERMISSIVE

INTERLOCK 24VDC

### DIFFERENTIAL PRESSURE VALVE

CHECK ALL VALVE SS-WV

WV3SSMT500SS

## AIR ELIMINATOR VESSEL

### PENFABCO AIR ELIMINATOR 18" X 33"

3" In/Out, 285 psi @ 20F 1/8" CA

Mercer PSV 1" x 1" "D" Orifice

## OPTIONAL EQUIPMENT

### BUILDING HEATER

1 CX1 PROVECTOR 1.8KW C1D1 120V HEATER

### 3 WAY DIVERT VALVE

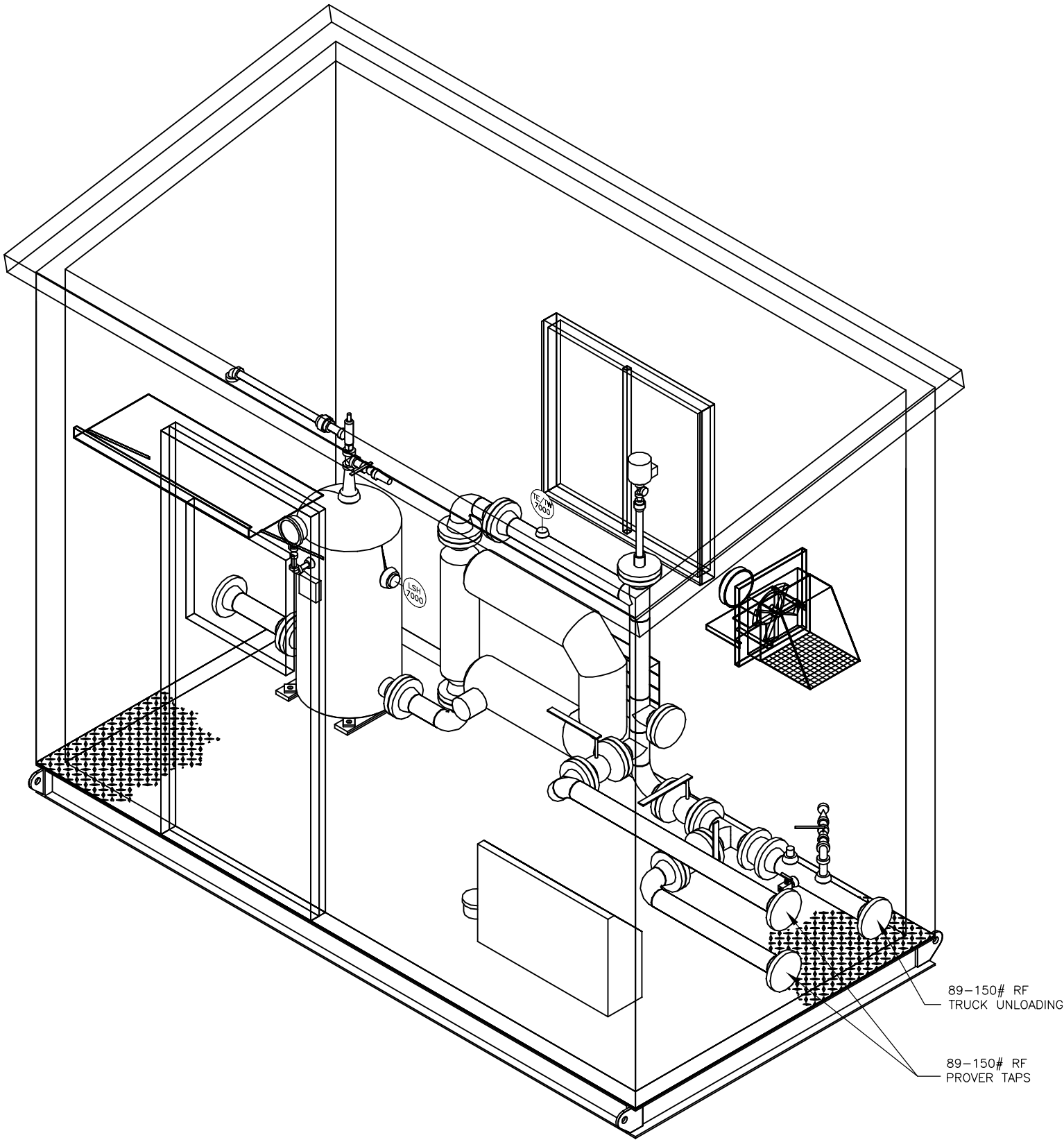
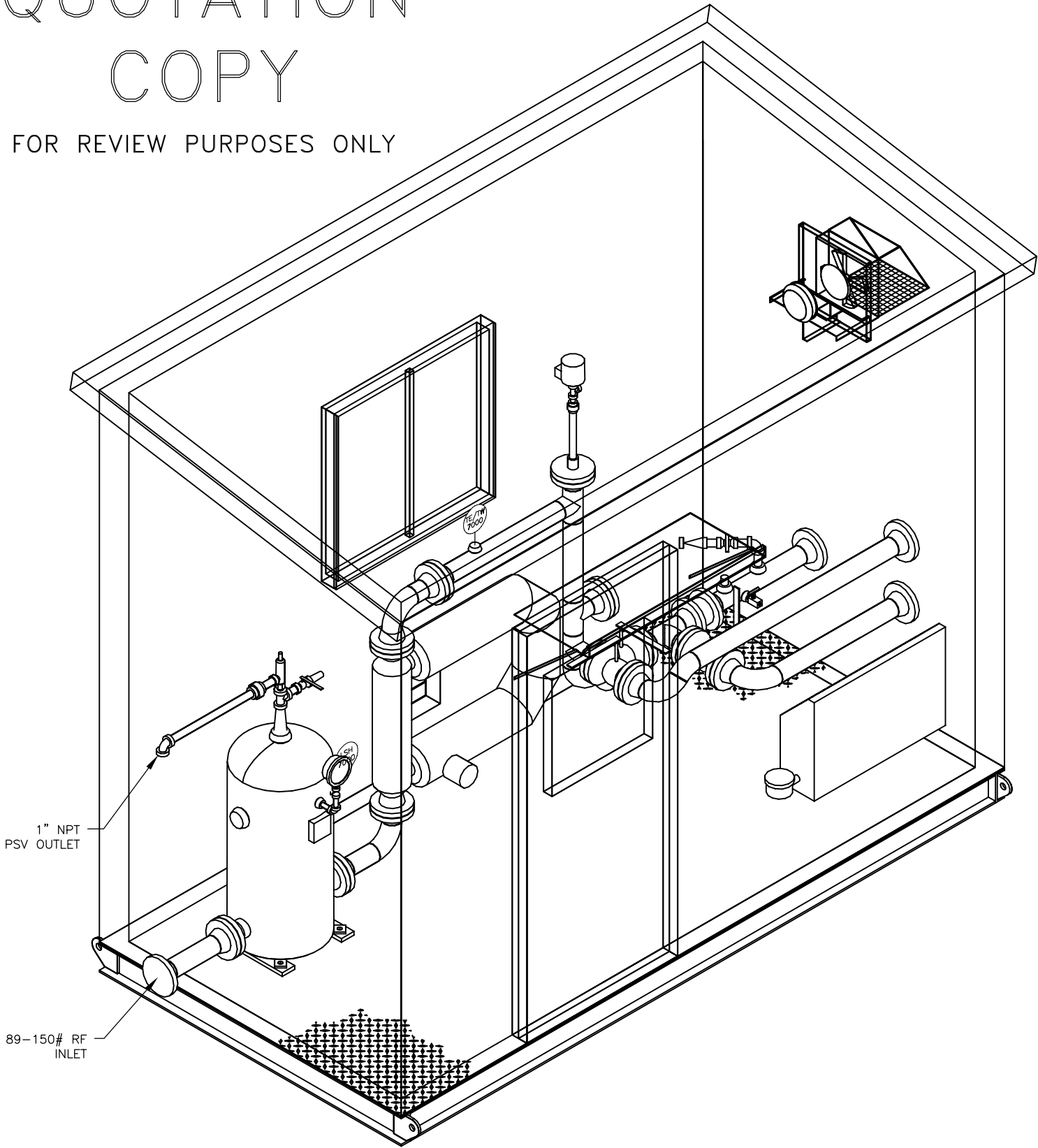
3"-150 TYCO 3 WAY BALL VALVE W/BETTIS ACTUATOR

### EXHAUST FAN


1 S10 x PK EXHAUST FAN w/EXPLOSION PROOF 1/4 HP 1725 RPM MOTOR

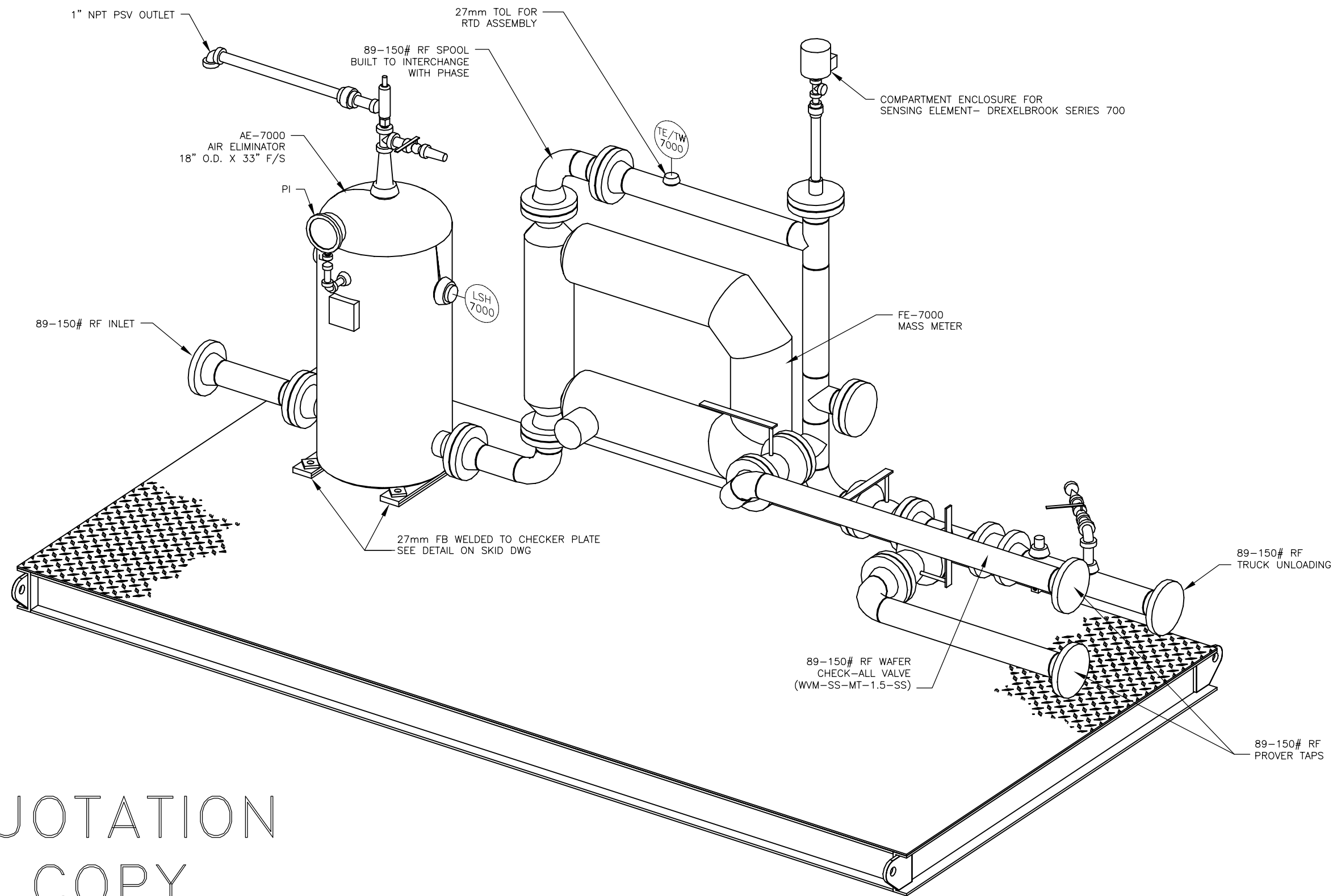
QUOTATION  
COPY

FOR REVIEW PURPOSES ONLY



NOTES:  
1. ALL DIMENSIONS ARE IN INCHES (mm)  
2. DRAIN LINES AND PIPE SUPPORTS NOT SHOWN

THIS DRAWING CONTAINS ROTATING RIGHT CORPORATION PROPRIETARY AND CONFIDENTIAL INFORMATION AND IS LOANED FOR LIMITED PURPOSES ONLY AND REMAINS THE PROPERTY OF ROTATING RIGHT INC. IT MAY NOT BE REPRODUCED IN WHOLE OR IN PART WITHOUT THE WRITTEN PERMISSION OF ROTATING RIGHT INC. AND MUST NOT BE DISCLOSED TO PERSONS NOT HAVING NEED OF SUCH DISCLOSURE CONSISTENT WITH THE PURPOSE OF THE LOAN. THE DOCUMENT MUST BE RETURNED TO ROTATING RIGHT UPON REQUEST AND IN ALL EVENTS UPON COMPLETION OF THE USE FOR WHICH IT WAS LOANED.					REV.	DATE	DESCRIPTION	BY	CHK.	<div> <b>PACKAGE-ISOMETRIC 'A'</b> SKY EYE MEASUREMENT INC. METERING SKID PACKAGE TYPICAL 3"-150# METER SKID W/ PROVERS</div>	QUOTE: ~
					0	FEB 13/12	ISSUED FOR REVIEW	ANT	MWH		JOB NUMBER: ~
											DATE: OCT 04/11
											DWN: LRS
											SCALE: NTS
											DRAWING NO:
											<b>B-GA-___-101</b>




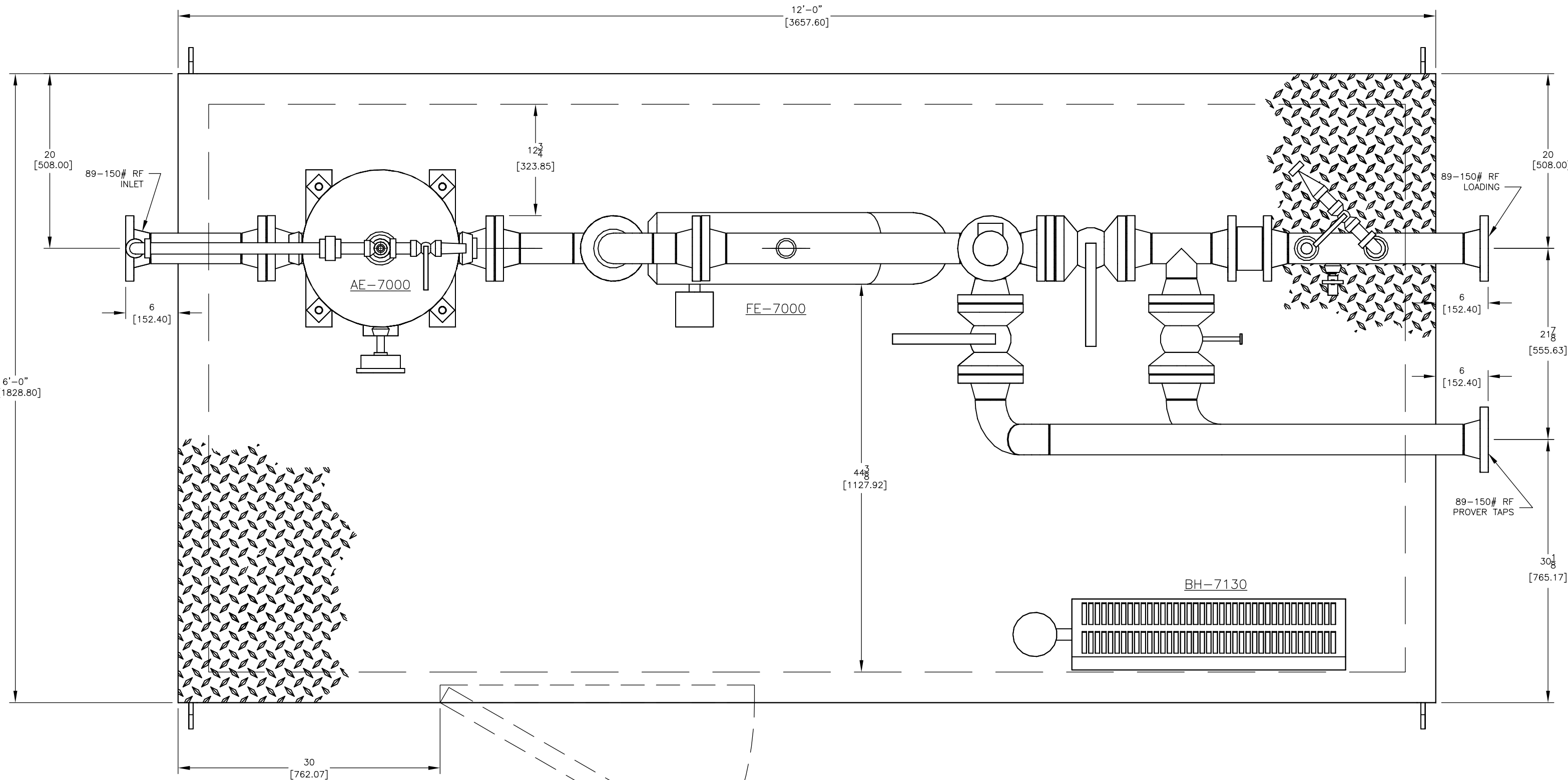
QUOTATION  
COPY

FOR REVIEW PURPOSES ONLY

THIS DRAWING CONTAINS ROTATING RIGHT CORPORATION PROPRIETARY AND CONFIDENTIAL INFORMATION AND IS LOANED FOR LIMITED PURPOSES ONLY AND REMAINS THE PROPERTY OF ROTATING RIGHT INC. IT MAY NOT BE REPRODUCED IN WHOLE OR IN PART WITHOUT THE WRITTEN PERMISSION OF ROTATING RIGHT INC. AND MUST NOT BE DISCLOSED TO PERSONS NOT HAVING NEED OF SUCH DISCLOSURE CONSISTENT WITH THE PURPOSE OF THE LOAN. THE DOCUMENT MUST BE RETURNED TO ROTATING RIGHT UPON REQUEST AND IN ALL EVENTS UPON COMPLETION OF THE USE FOR WHICH IT WAS LOANED.

REV.	DATE	DESCRIPTION	BY	CHK.
0	FEB 13/12	ISSUED FOR REVIEW	ANT	MWH

<div><p><b>ROTATING RIGHT</b></p><p><b>PACKAGE-ISOMETRIC 'B'</b></p><p>SKY EYE MEASUREMENT INC.</p><p>METERING SKID PACKAGE</p><p>TYPICAL 3"-150# METER SKID W/ PROVERS</p></div>	QUOTE: ~
	JOB NUMBER: ~
	DATE: OCT 04/11
	DWN: LRS
	SCALE: NTS
DRAWING NO: <b>B-GA-___-102</b>	

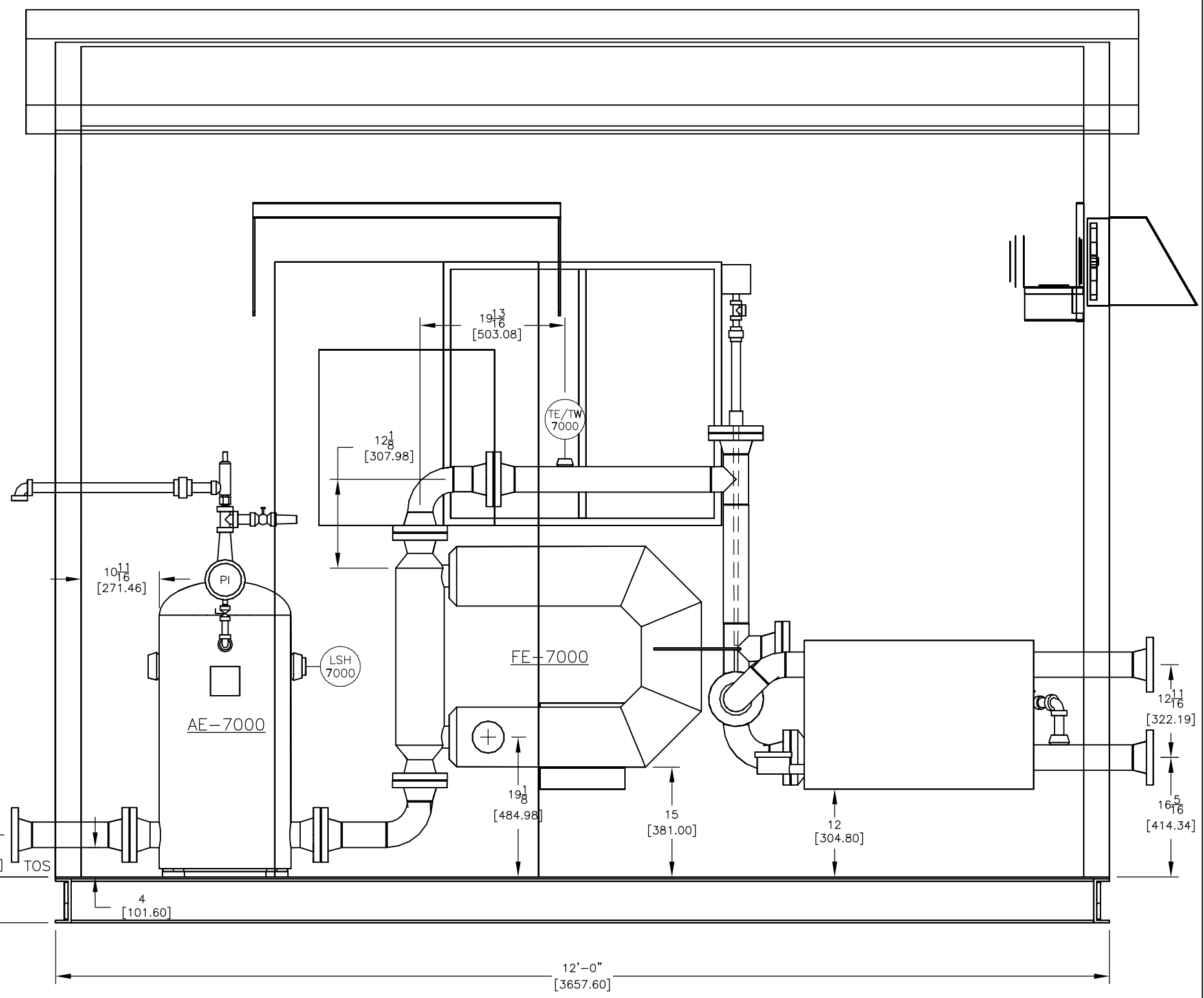
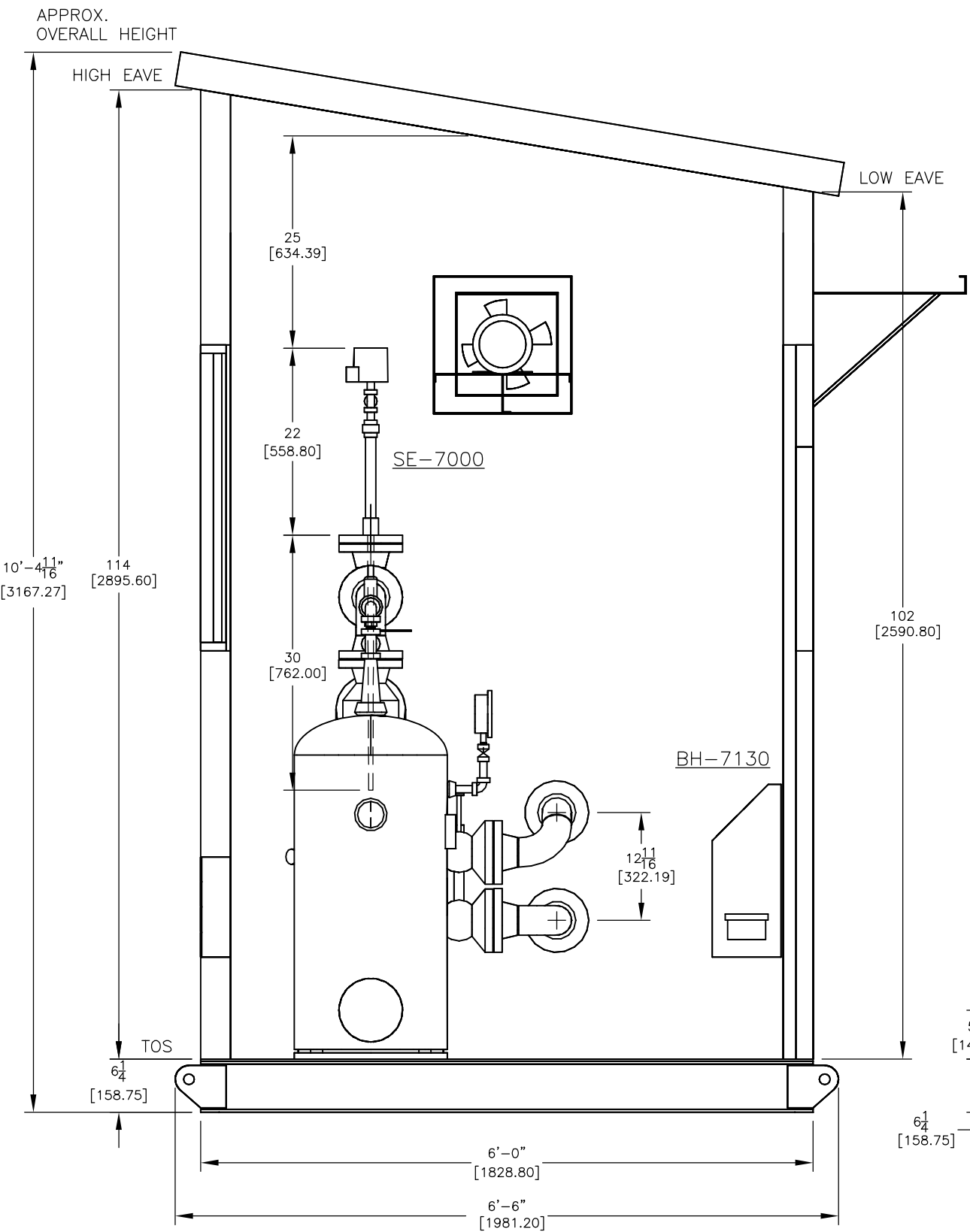


QUOTATION  
COPY  
FOR REVIEW PURPOSES ONLY


THIS DRAWING CONTAINS ROTATING RIGHT CORPORATION PROPRIETARY AND CONFIDENTIAL INFORMATION AND IS LOANED FOR LIMITED PURPOSES ONLY AND REMAINS THE PROPERTY OF ROTATING RIGHT INC. IT MAY NOT BE REPRODUCED IN WHOLE OR IN PART WITHOUT THE WRITTEN PERMISSION OF ROTATING RIGHT INC. AND MUST NOT BE DISCLOSED TO PERSONS NOT HAVING NEED OF SUCH DISCLOSURE CONSISTENT WITH THE PURPOSE OF THE LOAN. THE DOCUMENT MUST BE RETURNED TO ROTATING RIGHT UPON REQUEST AND IN ALL EVENTS UPON COMPLETION OF THE USE FOR WHICH IT WAS LOANED.

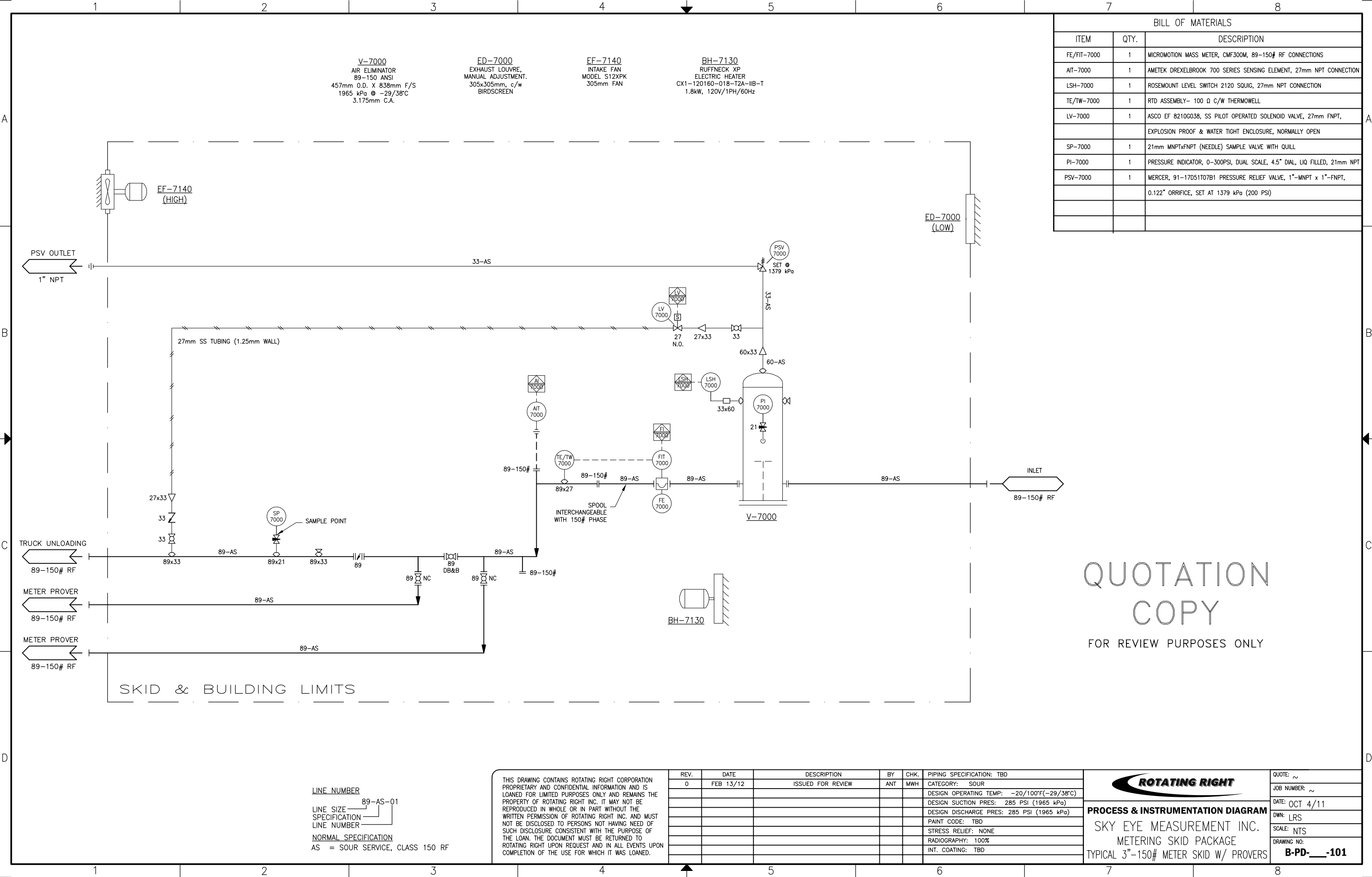
REV.	DATE	DESCRIPTION	BY	CHK.
0	FEB 13/12	ISSUED FOR REVIEW	ANT	MWH

<b>ROTATING RIGHT</b>		QUOTE: ~
		JOB NUMBER: ~
		DATE: OCT 04/11
		DWN: LRS
		SCALE: NTS
		DRAWING NO: <b>B-GA-___-103</b>
<b>PACKAGE-PLAN 'A'</b>		
SKY EYE MEASUREMENT INC.		
METERING SKID PACKAGE		
TYPICAL 3"-150# METER SKID W/ PROVERS		



QUOTATION  
COPY  
FOR REVIEW PURPOSES ONLY

THIS DRAWING CONTAINS ROTATING RIGHT CORPORATION PROPRIETARY AND CONFIDENTIAL INFORMATION AND IS LOANED FOR LIMITED PURPOSES ONLY AND REMAINS THE PROPERTY OF ROTATING RIGHT INC. IT MAY NOT BE REPRODUCED IN WHOLE OR IN PART WITHOUT THE WRITTEN PERMISSION OF ROTATING RIGHT INC. AND MUST NOT BE DISCLOSED TO PERSONS NOT HAVING NEED OF SUCH DISCLOSURE CONSISTENT WITH THE PURPOSE OF THE LOAN. THE DOCUMENT MUST BE RETURNED TO ROTATING RIGHT UPON REQUEST AND IN ALL EVENTS UPON COMPLETION OF THE USE FOR WHICH IT WAS LOANED.					REV.	DATE	DESCRIPTION	BY	CHK.	 <b>PACKAGE-ELEVATION 'A'</b> SKY EYE MEASUREMENT INC. METERING SKID PACKAGE TYPICAL 3"-150# METER SKID W/ PROVERS	QUOTE: ~
					0	FEB 13/12	ISSUED FOR REVIEW	ANT	MWH		JOB NUMBER: ~
											DATE: OCT 04/11
											DWN: LRS
											SCALE: NTS
											DRAWING NO:
											<b>B-GA-___-104</b>



BILL OF MATERIALS		
ITEM	QTY.	DESCRIPTION
FE/FIT-7000	1	MICROMOTION MASS METER, CMF300M, 89-150# RF CONNECTIONS
AIT-7000	1	AMETEK DREXELBROOK 700 SERIES SENSING ELEMENT, 27mm NPT CONNECTION
LSH-7000	1	ROSEMOUNT LEVEL SWITCH 2120 SQUIG, 27mm NPT CONNECTION
TE/TW-7000	1	RTD ASSEMBLY- 100 Ω C/W THERMOWELL
LV-7000	1	ASCO EF 8210G038, SS PILOT OPERATED SOLENOID VALVE, 27mm FNPT, EXPLOSION PROOF & WATER TIGHT ENCLOSURE, NORMALLY OPEN
SP-7000	1	21mm MNPTxFNPT (NEEDLE) SAMPLE VALVE WITH QUILL
PI-7000	1	PRESSURE INDICATOR, 0-300PSI, DUAL SCALE, 4.5" DIAL, LIQ FILLED, 21mm NPT
PSV-7000	1	MERCER, 91-17051T07B1 PRESSURE RELIEF VALVE, 1"-MNPT x 1"-FNPT, 0.122" ORRIFICE, SET AT 1379 kPa (200 PSI)

QUOTATION  
COPY  
FOR REVIEW PURPOSES ONLY

LINE NUMBER  
89-AS-01  
LINE SIZE  
SPECIFICATION  
LINE NUMBER  
NORMAL SPECIFICATION  
AS = SOUR SERVICE, CLASS 150 RF

THIS DRAWING CONTAINS ROTATING RIGHT CORPORATION PROPRIETARY AND CONFIDENTIAL INFORMATION AND IS LOANED FOR LIMITED PURPOSES ONLY AND REMAINS THE PROPERTY OF ROTATING RIGHT INC. IT MAY NOT BE REPRODUCED IN WHOLE OR IN PART WITHOUT THE WRITTEN PERMISSION OF ROTATING RIGHT INC. AND MUST NOT BE DISCLOSED TO PERSONS NOT HAVING NEED OF SUCH DISCLOSURE CONSISTENT WITH THE PURPOSE OF THE LOAN. THE DOCUMENT MUST BE RETURNED TO ROTATING RIGHT UPON REQUEST AND IN ALL EVENTS UPON COMPLETION OF THE USE FOR WHICH IT WAS LOANED.

REV.	DATE	DESCRIPTION	BY	CHK.	PIPING SPECIFICATION: TBD
0	FEB 13/12	ISSUED FOR REVIEW	ANT	MWH	CATEGORY: SOUR
					DESIGN OPERATING TEMP: -20/100°F(-29/38°C)
					DESIGN SUCTION PRES: 285 PSI (1965 kPa)
					DESIGN DISCHARGE PRES: 285 PSI (1965 kPa)
					PAINT CODE: TBD
					STRESS RELIEF: NONE
					RADIOGRAPHY: 100%
					INT. COATING: TBD

 <b>PROCESS &amp; INSTRUMENTATION DIAGRAM</b> SKY EYE MEASUREMENT INC. METERING SKID PACKAGE TYPICAL 3"-150# METER SKID W/ PROVERS	QUOTE: ~
	JOB NUMBER: ~
	DATE: OCT 4/11
	DWN: LRS
	SCALE: NTS
	DRAWING NO: <b>B-PD-___-101</b>