




DIAMONDBACK
INTEGRITY

UT Survey Information


Client Information		UT Machine Used Information:		Equipment Information:	
Client Name:	IPC Canada	Make:	Evident	Surface Condition:	Painted
Facility:	Dollard Sask	Model:	38DLPLUS	Surface Temperature:	-20°C to 20°C
Report#:	DBI45-01	Serial Number:	234269010	Thickness Range:	0" to 1.00"
Location:	Dollard Sask.	Calibration Date:	07-Nov-23	Reference Gain:	60 dB
UT Inspector/Company Information:		UT Transducer(s) Used:		Calibration Reference Block 1:	
Survey Date:	May 9th, 2024	Make:	D790-SM/D798	Block Type:	5 Step Block
Technician Name #1:	Morgan Hill	Serial Number:	1468431/1481384	Block Material:	Carbon Steel
Technician Signature #1		Cable Type:	LCMD-316-5B/Integral	Thickness Steps:	0.100" - 0.500"
		Temp Range	-20 to 500 °C/20-150°C	Serial Number:	1323-23
Technician #1 Certification:	SNT UT-1, according to SNT-TC-1A	Probe Contact Dia:	0.434"/0.283"	Calibration Reference Block 2:	
		Probe Angle:	0°/0°	Block Type:	4 Step Block
Type of Work Performed:	Corrosion Survey	Type (Single/Dual)	Dual/Dual	Block Material:	Carbon Steel
Procedure:	UT-1, Rev. 0	Mhz.	5/7.5	Thickness Steps:	0.500" - 2.00"
Scan Type:	Manual	Couplant	Echogel	Serial Number:	63852

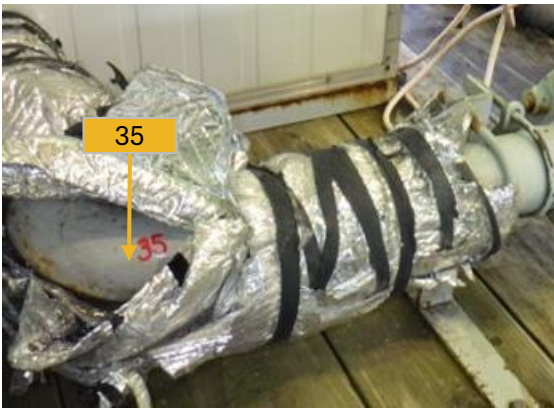
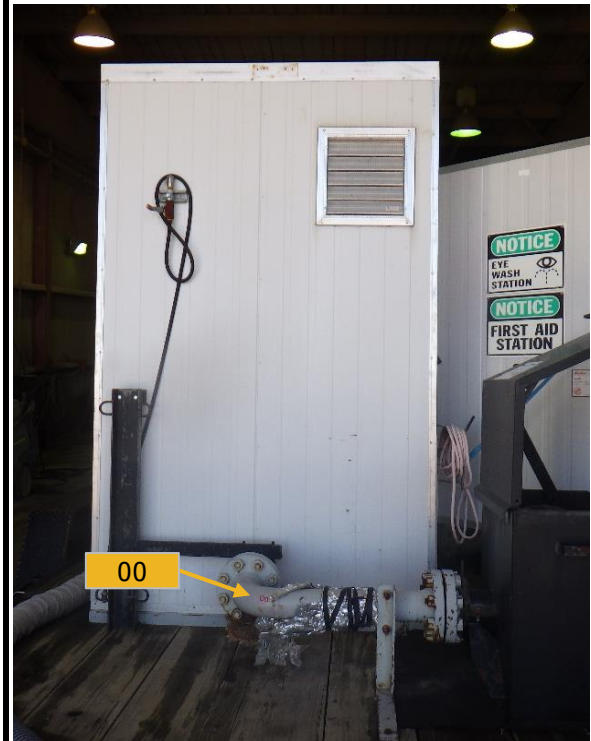
Equipment Description: Global Flow Metering Skid

Results: Fit for service

No corrosion was identified throughout the UT or internal inspection.

Internal Inspection Summary - An elbow was removed to allow for visual inspection. Minor deposits were visible throughout. No areas of corrosion or mechanical damage was identified throughout the inspection. Good overall condition.

	UT Survey Report	
	Date:	May 9th, 2024
Report #		DBI45-01
Static Data		
Owner:	IPC Canada	
Facility/Area:	Dollard Sask	
LSD:	N/A	
A No.:	-	
Serial No.:	-	
CRN:	-	
Description:	Global Flow Metering Skid	





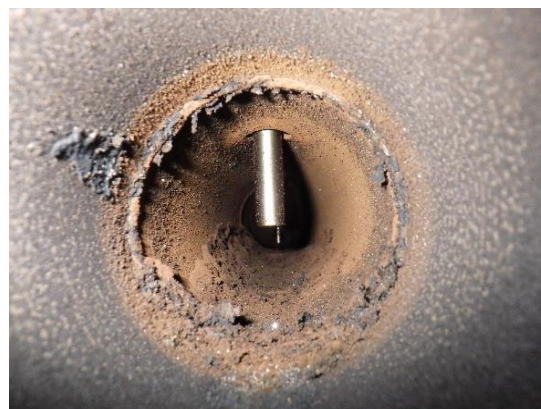
Internal Inspection Photos

Date: May 9th, 2024

Report # DBI45-01

Static Data

Owner:	IPC Canada
Facility/Area:	Dollard Sask
LSD:	N/A
A No.:	-
Serial No.:	-
CRN:	-
Description:	Global Flow Metering Skid





UT Survey Data

A No.: -

Description: Global Flow Metering Skid

09-May-24

CML	Location	OD	Sch.	Nom. (inches)	Tmin (API574)	Previous Minimum	Minimum (inches)	Average (inches)	% Wall Loss	Corrosion Rate (in/yr.)	Estimated RL (yrs.)
0	Inlet Elbow (Outside Trailer)	3"	40	0.216	0.080		0.224	0.230	-3.70%	-	-
Comments:											
5	Inlet Elbow (Inside Trailer)	3"	40	0.216	0.080		0.238	0.250	-10.19%	-	-
Comments:											
10	8" Pipe	8"	80	0.500	0.110		0.474	0.485	5.20%	-	-
Comments:											
15	Elbow	3"	40	0.216	0.080		0.257	0.280	-18.98%	-	-
Comments:											
20	Elbow	3"	40	0.216	0.080		0.204	0.220	5.56%	-	-
Comments:											
25	Elbow	3"	40	0.216	0.080		0.214	0.230	0.93%	-	-
Comments:											
30	Elbow	3"	40	0.216	0.080		0.208	0.220	3.70%	-	-
Comments:											
35	Outlet Eblow (Ouside Trailer)	3"	40	0.216	0.080		0.224	235.000	-3.70%	-	-
Comments:											