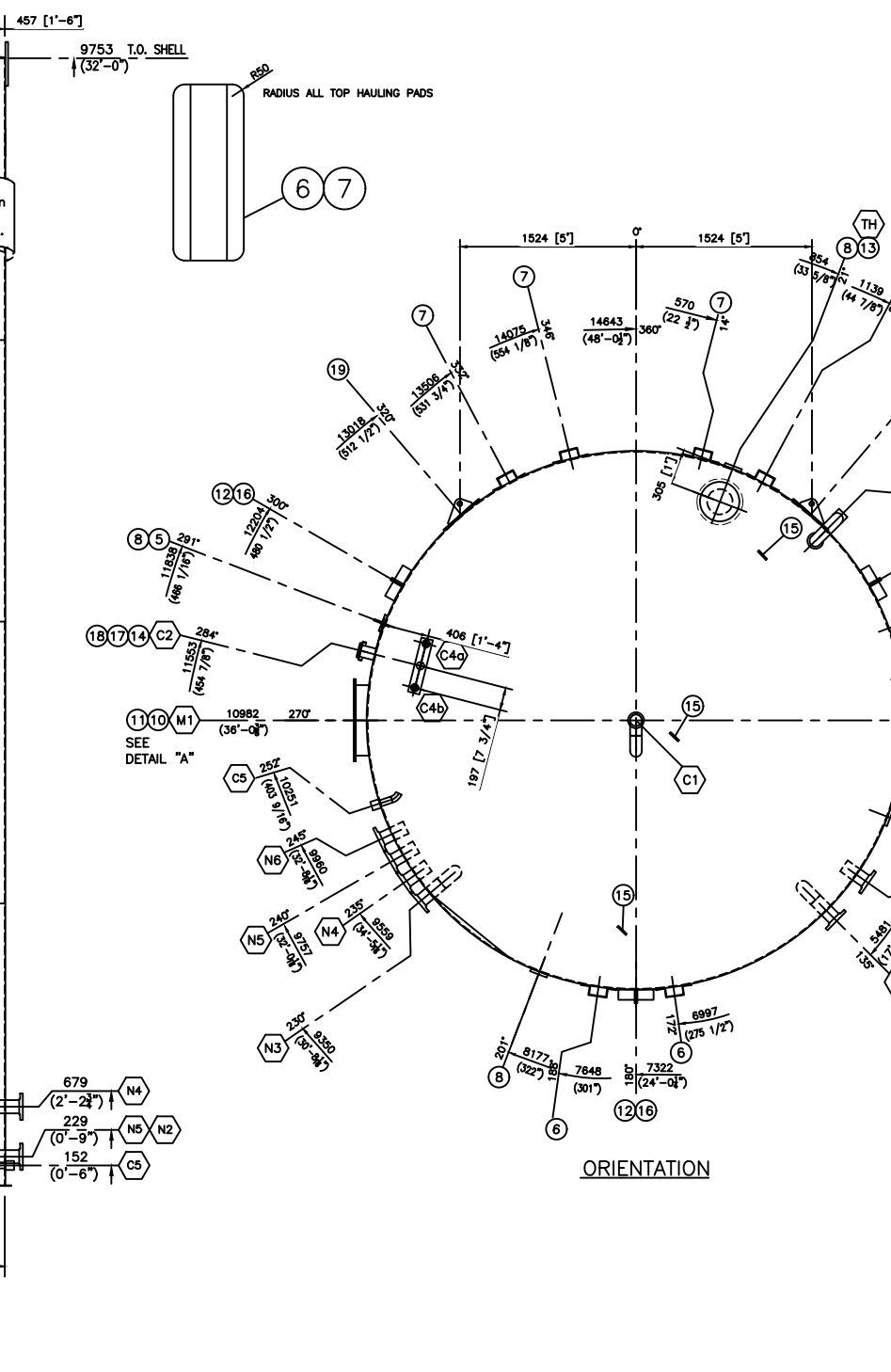
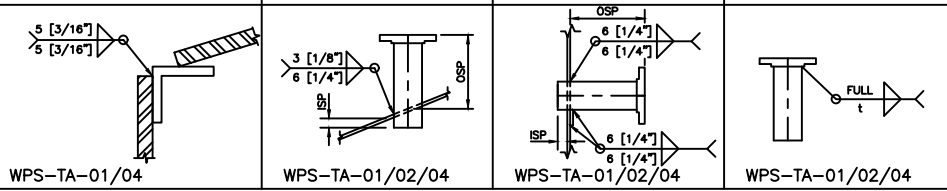
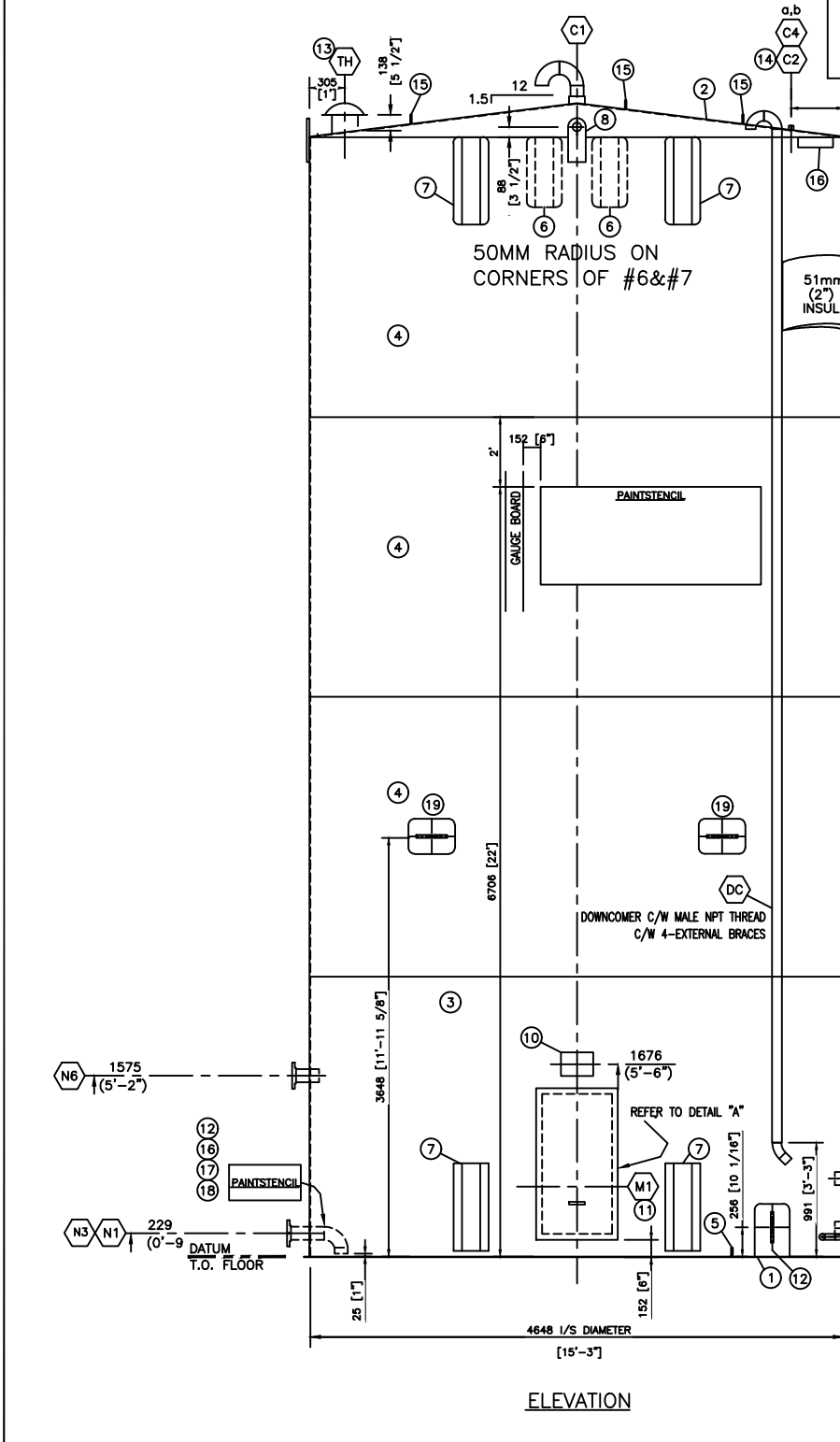


NOZZLE SCHEDULE	MARK#	QTY	SIZE	SCH	CLASS	TYPE	O.S.P.	I.S.P.	REPAD	OD x ID	SERVICE/DESCRIPTION	ORIENTATION	ELEVATION
N1	1	102 (4")	40	150	RFSO	152 (6")	76 (3")	305x117			C/W 90° ELBOW DOWN/4" BUTTERFLY VALVE/THR FLG/CAST PLUG	135	1229 (0'-9")
N2	1	102 (4")	40	150	RFSO	152 (6")	76 (3")	305x117			C/W 4" BUTTERFLY VALVE/THR FLANGE/CAST PLUG	125	1229 (0'-9")
N3	1	102 (4")	40	150	RFSO	152 (6")	76 (3")	305x117			C/W 90° ELBOW DOWN/4" BUTTERFLY VALVE/THR FLG/CAST PLUG	230	1229 (0'-9")
N4	1	102 (4")	40	150	RFSO	152 (6")	76 (3")	305x117			C/W 4" BUTTERFLY VALVE/THR FLANGE/CAST PLUG	235	679 (2'-2 3/4")
N5	1	102 (4")	40	150	RFSO	152 (6")	76 (3")	305x117			C/W 4" BUTTERFLY VALVE/THR FLANGE/CAST PLUG	240	1229 (0'-9")
N6	1	152 (6")	40	150	RFSO	152 (6")	76 (3")	400x171			C/W BLIND FLANGE	245	1575 (5'-2")
C1	1	102 (4")	-	150	FULL	FULL	-	-			TANK VENT C/W 4" THREADED GOOSENECK	ROOF CENTER	ROOF
C2	1	38 (1 1/2")	-	3000	FULL	FULL	-	-			LEVEL INDICATOR	305	ROOF
C4a,b	2	38 (1 1/2")	-	3000	FULL	FULL	-	-			FLOAT GUIDE WIRES	CENTERED 305	ROOF
C5	1	80 (2")	-	3000	FULL	FULL	-	-			CIRCULATION C/W INTERNAL 45 ELBOW (HORIZONTAL FACING LEFT)/CAST PLUG	252	152 (0'-6")
DC	1	76 (3")	-	-	-	-	-	-			DOWNCOMER C/W 45 DEGREE ELBOW MALE NPT THREAD AND 4-EXTERNAL BRACES 4" OFFSET	45	ROOF
TH	1	203 (8")	40	FAB'D	FAB'D	203 (8")	6 (1/4")	-			THIEF HATCH	323	ROOF
M1	1	610X1219 (2'x4')	-	FAB'D	FAB'D	SEE DET. "A"	SEE DET. "A"	-			SHELL MANWAY 3' X 2'	270	152 (0'-6")

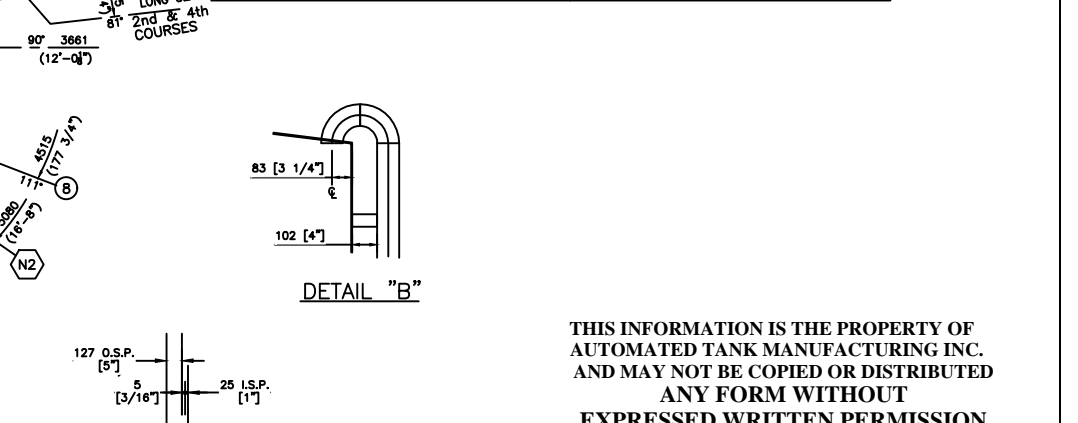


MARK#	QTY	COMPONENT DESCRIPTION	MATERIAL	WT
1	1	FLOOR: PLATE 6.35mm (1/4") THK. x 4763mm (15'-7 1/2") DIA.	G40.21-44W	
2	1	ROOF: PLATE 4.76mm (3/16") THK. x 4648mm (15'-6") DIA.	G40.21-44W	
3	1	SHELL: PLATE 6.35mm (1/4") THK. x 2438mm (8'-0") x 14623mm (47'-11 11/16") LG.	G40.21-44W	
4	3	SHELL: PLATE 4.76mm (3/16") THK. x 2438mm (8'-0") x 14618mm (47'-11 3/4") LG.	G40.21-44W	
5	1	GROUNDING LUG ATMI-STD-002 (REFER TO DWG#ATMI-STD-100-01)	G40.21-44W	
6	2	HAULING PADS ATMI-STD-005 (REFER TO DWG#ATMI-STD-100-01)	G40.21-44W	
7	8	LOADING PADS ATMI-STD-004 (REFER TO DWG#ATMI-STD-100-01)	G40.21-44W	
8	4	LIFTING LUGS ATMI-STD-001 (REFER TO DWG#ATMI-STD-100-01)	G40.21-44W	
10	1	NAMEPLATE C/W BRACKET ATMI-STD-006 (REFER TO DWG#ATMI-STD-100-01)	G40.21-44W	
11	1	SHELL MANWAY c/w 2'-0" x 4'-0" COVER ATMI-STD-009 (REFER TO DWG#ATMI-STD-100-01)	G40.21-44W	
12	3	BOTTOM LIFT LUG C/W TS REPAD AS PER DWG 1307936 WESTERN MANUFACTURING (1" LUG)	G40.21-44W	
13	1	THIEF HATCH NOZZLE c/w HAWKEYE T-200 THIEF HATCH SET @ 8 oz. PRESSURE & 0.4 oz. VACUUM (REFER TO ATMI-STD-008)		
14	1	LEVEL INDICATOR 3M ARM GAUGING SYSTEM c/w FLOAT, GALVANIZED METAL BOARD 0-160 BLACK (CUBIC METERS) & HARDWARE		
15	3	TANK ROOF SAFETY HARNES LUG REFER TO (REFER TO ATMI-STD-007)	G40.21-44W	
16	3	TOP STRAP GUARD PIPE (3" x 12" LONG SCH 40)	G40.21-44W	
17	35	1/4" NYLON ROPE		
18	1	ROPE TIE OFF BRACKET	G40.21-44W	
19	2	TANK TRAILER LUG C/W REPAD AS PER DWG 11125201 WESTERN MANUFACTURING	G40.21-44W	

MANUFACTURER'S NOTES:
 - DOOR CHIME IS 6" OFF OF FLOOR
 - STICK WELD CHIME IN AND OUT
 - FULL BOLT UP FIELD READY
 - SEE NOZZLE SCHEDULE FOR VALVES
 - 1" GAUGE BOARD ROPE REQUIRED
 - 50mm RADIUS ON TOP HAULING PADS#6-#7
 - PAINT STENCIL REQUIRED ON N1/N3 (BY CUSTOMER)
 - NAME PAINT STENCIL REQUIRED @ 110m3 6" FROM GAUGE BOARD (BY CUSTOMER)

SHIPPING NOTES:
 1. TIGHTEN ALL VALVE STUDS TO OPERATING SPEC PRIOR TO SHIPPING
 2. MOUNT GAUGE BOARD PULL DOWN ROPE AND ROPE TIE OFF BRACKET
 3. SILICON DOOR GASKETS PRIOR TO INSTALLATION AND TIGHTEN ALL DOOR BOLTS TO OPERATING SPEC
 4. SAFETY WIRES ON GAUGE BOARD READER AND THIEF HATCH

TOTAL WEIGHT:



NOTES:
 1. ALL DIMENSIONS ARE IN MILLIMETERS. DIMENSIONS IN BRACKETS ARE IMPERIAL CONVERSIONS FOR SHOP REFERENCE ONLY.
 2. ALL NOZZLE PROJECTIONS GIVEN ARE ALONG THE NOZZLE CENTERLINE.
 3. FLANGE AND BOLT HOLES TO STRADDLE PRINCIPAL CENTERLINES OF TANKS.
 4. ATM INSPECTION LEVEL 1.

CUSTOMER SPECIFICATIONS		
DESIGN CODE:	API 650 MODIFIED	EXTERNAL:
DESIGN PRESSURE:		INTERNAL:
OPERATING PRESSURE:	ATMOSPHERE	TESTING:
DESIGN TEMPERATURE:		LIMITED TO AIR TESTING AS PER API 12F CODE
SERVICE:	OIL, WATER, GAS (SWEET)	INSULATION:
OPERATING LEVEL:		APPLY MIN. 51mm (2") URETHANE FOAM SPRAY, SEAL WITH 15milis DFT BLACK ELASTOMERIC SEALER.
CORROSION ALLOWANCE:	NONE	
OTHER:		

CAUTION : READ BEFORE CONSTRUCTION
 ALTHOUGH ALL DIMENSIONS ARE BELIEVED TO BE ACCURATE, CONTRACTOR SHALL VERIFY ALL DIMENSIONS PRIOR TO FABRICATION. CONTRACTOR IS TO NOTIFY PROJECT MANAGER IMMEDIATELY WITH REGARDS TO ANY DISCREPANCIES, ERRORS OR OMISSIONS. DESIGN IS NOT TO BE ALTERED WITHOUT PRIOR WRITTEN INSTRUCTION BY THE PROJECT ENGINEER.

REFERENCE DRAWINGS	DWG. NO.	NO.	DATE	PROJECT DESCRIPTION	EWR No.	EPCM Co.	EPCM No.	ENG.
STANDARD DETAILS	ATMI-STD-100-01	0	-	ISSUED FOR CONSTRUCTION	-	ATMI	-	JWB
-	-	D	2014-08-06	REVISE DWG NUMBER AS PER CINDY	-	-	-	-
-	-	E	2014-11-10	REVISE AS PER JOE	-	-	-	-
-	-	F	2014-11-26	ROTATE HAULING PADS AND VERTICAL SEAMS	-	-	-	-

ISSUE STAGE	DATE	BY	CHKD.	APPD.	PERMIT STAMP	ENGINEER'S STAMP
Prelim.	-	-	-	-		
Approval	-	-	JWB	JWB		
Tender	-	-	-	-		
Const.	-	-	JWB	JWB		
As-Built	-	-	-	-		

AUTOMATED TANK MANUFACTURING INC.
 P.O. Box 420 108 2PO
 Kitchissippi, Alberta

DATE: 2014/11/26
 SCALE: 1:30 (A1 Size)

TITLE: 1000bbl FRAC TANK (c/w STRAIGHT LADDER)
 ORIENTATION & ELEVATION

FILE NO. ATMI-1000-RG-03F