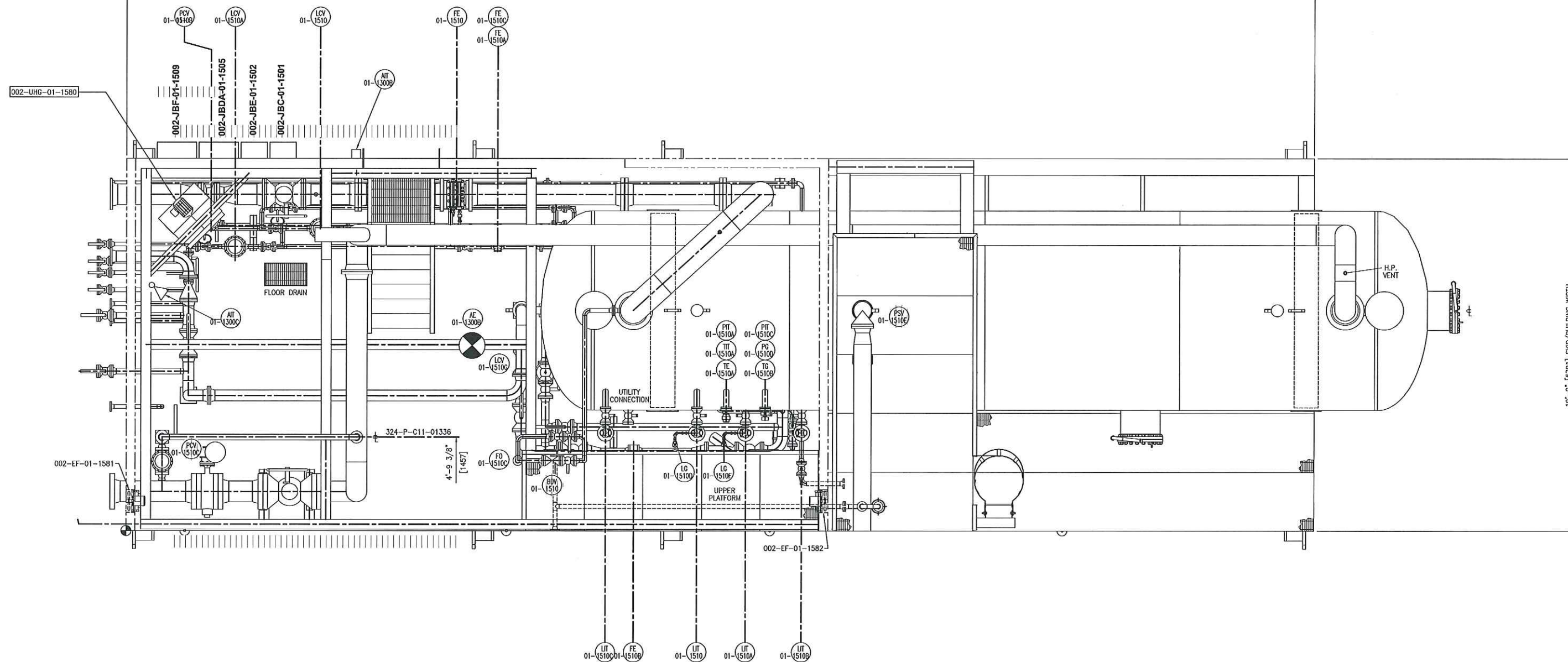


PLANT NORTH

60'-11" [18567] SKID LENGTH



19'-0" [5791] SKID/BUILDING WIDTH

PLAN VIEW
SCALE 3/8"=1'-0"

NOTES:

5B1107-02-DR-90-007 Rev 0

NO.	REVISION	BY	CHK	DATE
0	ISSUED FOR CONSTRUCTION	MA		10/21/13
A	ISSUED FOR APPROVAL	MA		10/09/13

CUSTOMER REFERENCE: -



www.5Blue.com

CUSTOMER:	DEVON NEC CORPORATION	JOB NO.:	5B1107-30
PROJECT:	FERRIER CENTRAL OIL BATTERY - LIQUID EXTRACTION PLANT (LEP) LOCATION: LSD 11-02-039-08 W5M		
TITLE:	L.P. INLET SEPARATOR PACKAGE (002-PK-01-1500) GENERAL ARRANGEMENT - INSTRUMENT LAYOUT		
DRAWN:	BS	CHK:	
APP:		SCALE:	3/8"=1'-0"
DATE:	27/05/13	DWG NO.:	LAY1500-02
SHT:	TTL		