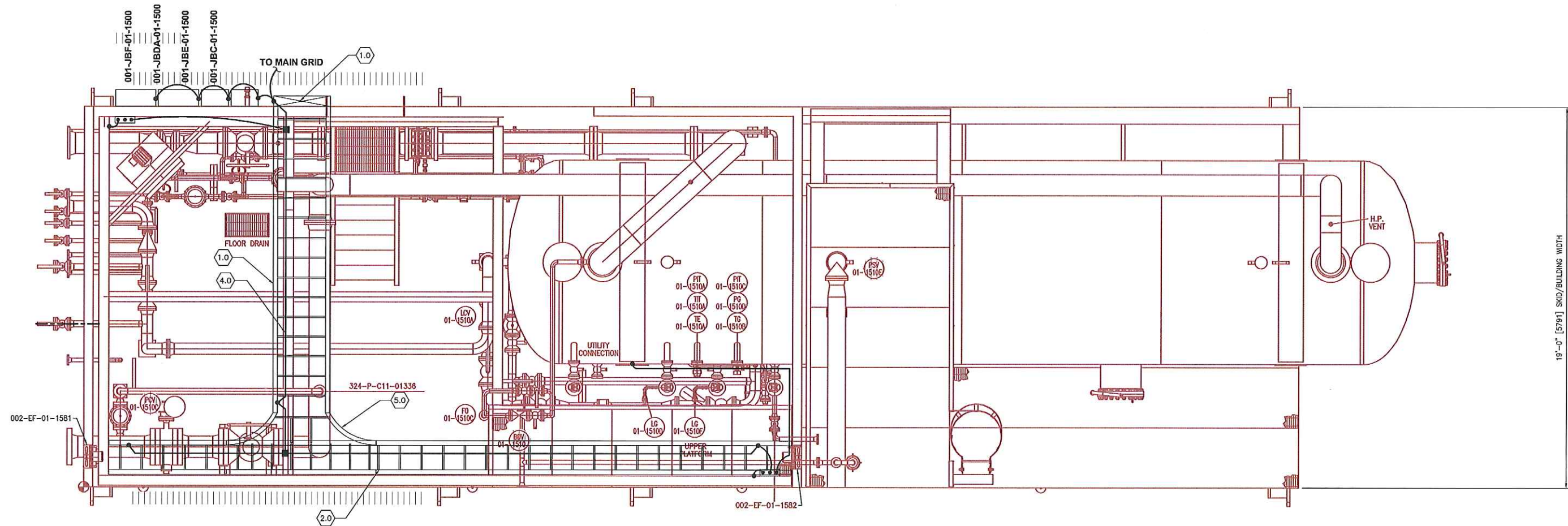





| BILL OF MATERIAL | | | |
|------------------|--------|--|-------------------|
| ITEM | QTY | DESCRIPTION | MODEL # |
| 1.0 | AS REQ | 600mm ALUMINUM CABLE TRAY, CLASS E STRAIGHT 225 RUNG SPAN | T&B AH3624L09-6 |
| 2.0 | AS REQ | 300mm ALUMINUM CABLE TRAY, CLASS E STRAIGHT 225 RUNG SPAN | T&B AH3612L09-6 |
| 3.0 | AS REQ | 600mm ALUMINUM CABLE TRAY, CLASS E ELBOW HORIZONTAL 90° 600mm RADIUS, 225 RUNG | T&B AUF624LH89024 |
| 4.0 | AS REQ | #2/0 AWG GROUND WIRE - GREEN | |
| 5.0 | AS REQ | 600mm ALUMINUM CABLE TRAY, CLASS E HORIZONTAL TEE 600mm RADIUS, 225 RUNG | T&B AHF612LHT24 |



PLAN VIEW
SCALE 3/8"=1'-0"

NOTES:

5B1107-02-DR-90-008 Rev 0

| | | | | | | | | | | | | |
|-----|-------------------------|----|----------|---|---------------|---|-----|-------------------|---------------|-------------------|---------|---|
| | | | | CUSTOMER REFERENCE | | CUSTOMER: DEVON NEC CORPORATION | | JOB NO. 5B1107-30 | | | | |
| | | | |  | | PROJECT: FERRIER CENTRAL OIL BATTERY - LIQUID EXTRACTION PLANT (LEP) LOCATION: LSD 11-02-039-08 W5M | | | | | | |
| | | | | | | TITLE: L.P. INLET SEPARATOR PACKAGE (002-PK-01-1500) GENERAL ARRANGEMENT - CABLE TRAY AND GROUNDING LAYOUT | | | | | | |
| 0 | ISSUED FOR CONSTRUCTION | MA | 10/21/13 | DRAWN | BS | CHK | APP | SCALE 3/8"=1'-0" | DATE 27/05/13 | DWG NO LAY1500-03 | SHT TIT | 0 |
| A | ISSUED FOR APPROVAL | MA | 10/09/13 | | | | | | | | | |
| NO. | REVISION | BY | CHK | DATE | www.5Blue.com | | | | | | | |