

002-EF-01-1581/1582
EXHAUST FANS

MAKE: RUFFNECK
MODEL: 3ACPH: EFX-12A-2HXSP
MODEL: 9ACPH: EFX-16A-2HXSP

002-EFM-01-1581/1582
EXHAUST FAN MOTORS

MAKE: RUFFNECK
MODEL: 3ACPH: 575/3/50 - 1/2HP - 850CFM - T38 MOTOR
MODEL: 9ACPH: 575/3/60 - 1/2HP - 1825CFM - T38 MOTOR

002-V-01-1510
L.P. INLET SEPARATOR

SIZE: 120" ID x 40'-0" S/S
(3048mm ID x 12192mm S/S)
MAWP: 200 PSIG @ -49.32°F / PV @ 302°F
(1379 kPa @ -45/150°C)
CA: 0.125" (3mm)
INSULATION: 50 MINERAL WOOL G/S BLDG ONLY
c/w 24" OD WATER BOOT

002-L-01-1683
ACTUATED LOUVRE

SIZE: 36" x 36"
PK-4LG PARALLEL BLADE DAMPER
c/w BELIMO 120V NFBUP-S ACTUATOR
c/w BELIMO Z5260 EXPLOSION PROOF ENCLOSURE

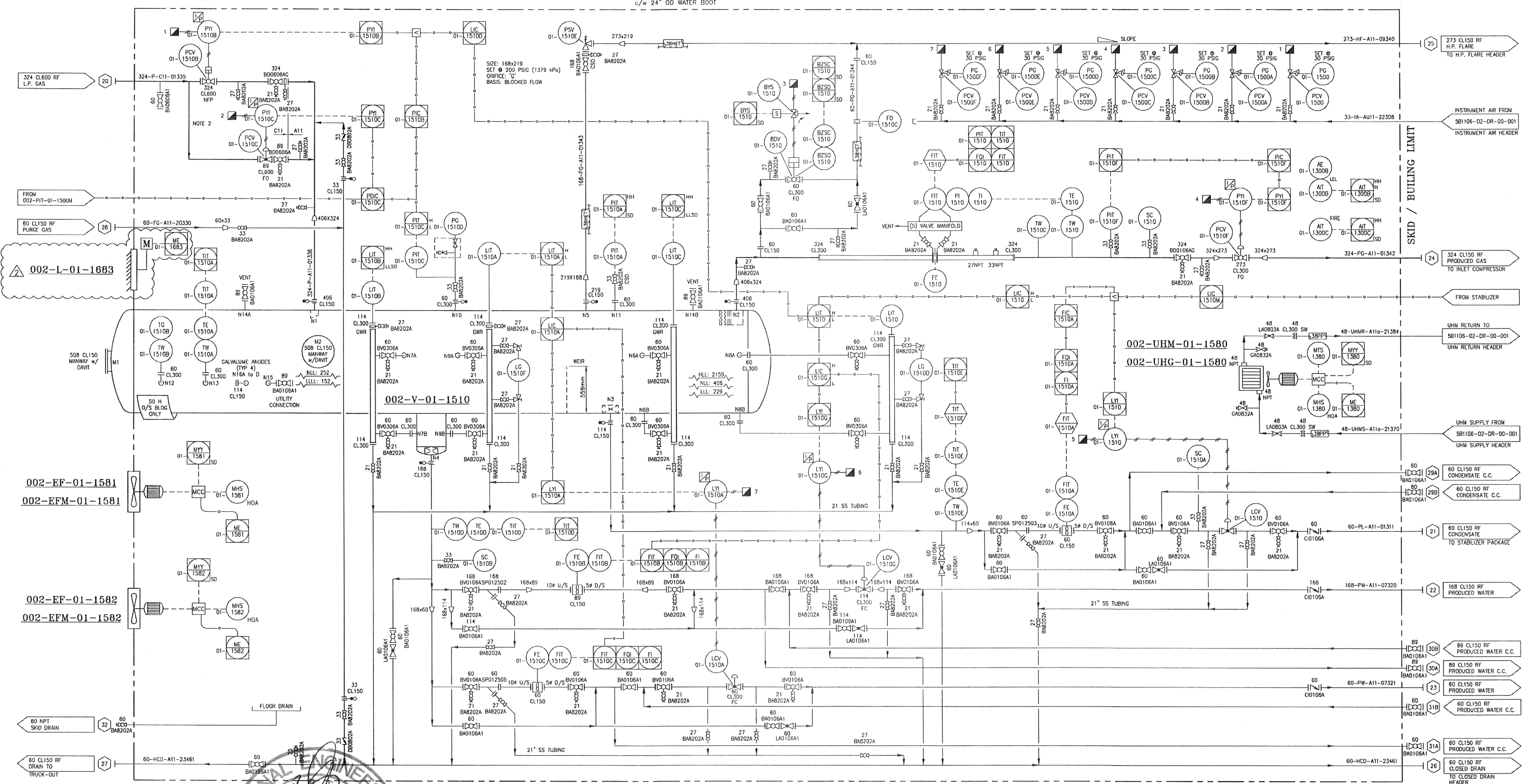
002-UHG-01-1580
BUILDING HEATER

MAKE: RUFFNECK
MODEL: RH-24A-47A1-A1-2H
DUTY: 0.5 HP
575 / 3PH / 60Hz

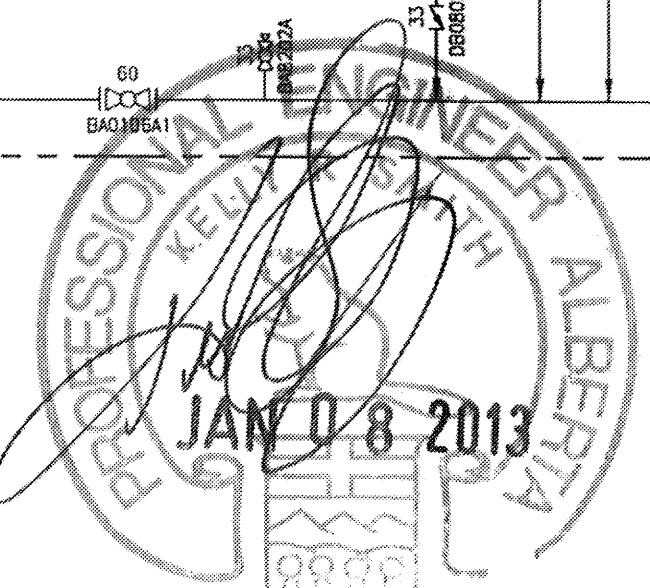
002-UHM-01-1580
BUILDING HEATER MOTOR

MAKE: RUFFNECK
MODEL: T38 MOTOR - 508 FAN
CLASS 101V1&11 GROUP C&D

NOTES:
1. THIS P & ID IS AN IMAGE OF THE VENDOR P & ID.
SEE VENDOR TITLE BLOCK FOR VENDOR DRAWING NUMBER AND REVISION.



NOTES:
1. ALL INSTRUMENT TAGS SHALL READ AS FULL TAG NUMBER.
002-PIT-01-1510A FOR EXAMPLE.
2. CONTROL VALVE PCV-1510B TO HAVE NO FAIL POSITION.
3. C.C. = CALIBRATION CONNECTION



NOTE:
- ALL TRANSMITTERS AND SWITCHES ARE WIRED TO SKID EDGE JUNCTION BOX BY SBLUE
- REMOTE CONTROL AND MONITORING TO BE BY CUSTOMER

NO.	REVISION	BY	CHK	DATE
2	ADDED LOUVRE	BS		06/01/14
1	REVISED AS SHOWN	SF		05/11/13
0	ISSUED FOR CONSTRUCTION	BS		15/07/13
A	ISSUED FOR APPROVAL	BS		15/05/13

CUSTOMER REFERENCE: 407014-00120

CUSTOMER: DEVON NEC CORPORATION

PROJECT: FERRIER CENTRAL OIL BATTERY-LIQUID EXTRACTION PLANT (LEP)
LOCATION: LSD 11-02-039-08 W5M

TITLE: L.P. INLET SEPARATOR PACKAGE (002-PK-01-1500)

5Blue Process Equipment Inc.
www.5Blue.com

SCALE: NTS

DATE: 09/05/13

DWG NO: 5B1107-02-DR-00-001

SHT: 001

DWG. NO.	REFERENCE DRAWINGS	DEVON PROJECT	REV	REVISIONS	DATE (yy.mm.dd)	BY	CHK'D	APP'D	OWNR APP'D
		01-00348.1	0	ISSUED FOR USE	14.02.15	ERS	JM	TS	

DESIGNED	CHECKED	PROCESS CK.	MECH. CK.	STRUCT. CK.	ELECT. CK.	OWNER APP.	OWNER APP.
ERS							

devon

DEVON FERRIER
LIQUID EXTRACTION PLANT
P&ID - LP INLET SEPARATOR
LSD 11-2-39-085 W5M

CONTR. JOB NO: 14-00120
SCALE: NONE
DWG. NO.: FER-002.1102039085-A-PID-0102-02
DEVON PROJ.: 01-00348.1

WorleyParsons
resources & energy

"This drawing is prepared solely for the use of the contractual customer of WorleyParsons Canada Services Ltd. and WorleyParsons Canada Services Ltd. assumes no liability to any other party for any representation contained in this drawing."