

69'-4 1/2" APPROXIMATE OVERALL PACKAGE LENGTH

60'-11" SKID LENGTH

36'-0" BUILDING LENGTH

18'-8" F.O.F. TO F.O.F.

FE-1510 OVERALL LENGTH

14'-0 1/2"

13'-9 1/2"

25'-0"

29'-3"

30'-6"

37'-6"

10'

37'-9"

11505

60-PC-A11-01344

F.O.F. (TYP)

60-RI-A11-01311

60-FW-A11-07321

60-HD-A11-23461

9A 11A

9B 11B

20'-0"

6096

20'-10"

6350

62'-6"

19050

324-P-A11-01336

19'-0" SKID/BUILDING WIDTH

20'-10" APPROXIMATE OVERALL PACKAGE WIDTH

11'-3"

3429

15'-1 1/4"

4604

324-P-A11-01336

F.O.F.

002-RI-01-1510

11'-3"

3429

5'-5 1/8"

1655

60-FW-A11-07321

10A

2'-5"

737

168-FW-A11-07321

7 10B

1'-3"

381

11'

279

59'-0"

17933

88 VENT

SLIDING SADDLE

FIXED LUC

FIXED LUC

GRATING OMITTED FOR CLARITY

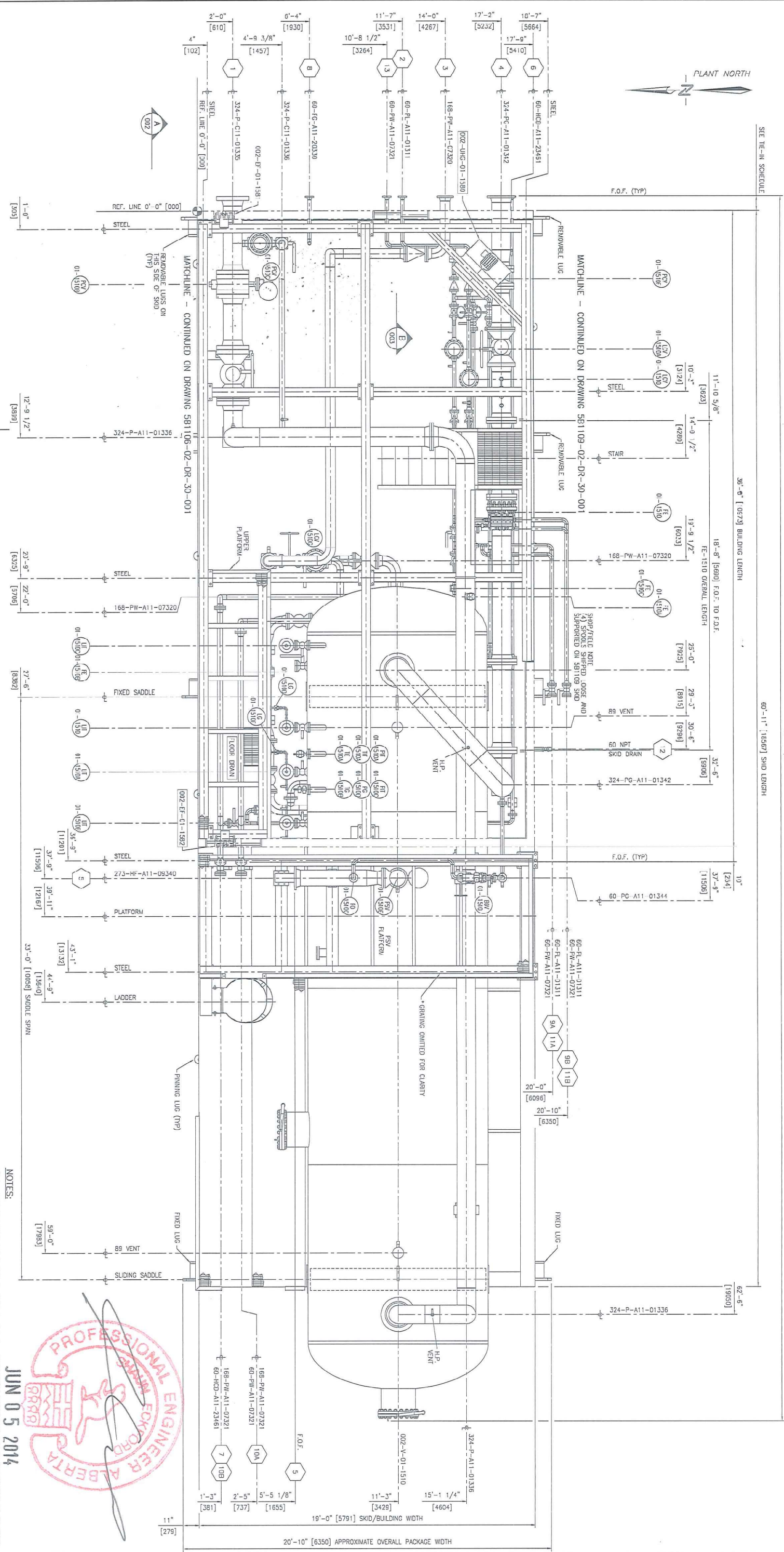
PSV PLATFORM

PSV PLATFORM

PSV PLATFORM

PSV PLATFORM

PLANT NORTH



TIE-IN SCHEDULE

1	324 CG60 RF L.P. GAS NOZZLE PROL. = 10" [254]	5	273 CL150 RF H.P. FLARE TO H.P. FLARE HEADER EL. 2'-6 5/8" [8044] B.O.P. NOZZLE PROL. = 10" [254]	9A/3	60 CL150 RF H.C. CALIBRATION CONNECTIONS EL. 2'-1 5/8" [4574] B.O.P. NOZZLE PROL. = 9 3/4" [248]	13	60 CL150 RF PRODUCED WATER TO TANKS EL. 1'-8" [4574] B.O.P. NOZZLE PROL. = 9 3/4" [248]
2	168 CG60 RF L.P. GAS NOZZLE PROL. = 10" [254]	6	60 CL150 RF CLOSED DRAIN TO HEADER EL. 6" [152] B.O.P. NOZZLE PROL. = 9 3/4" [248]	10A/B	60 CL150 RF PRODUCED WATER CALIBRATION CONN. EL. 3'-0" [914] B.O.P. NOZZLE PROL. = 10" [254]	14A/B	60 CL150 RF PRODUCED WATER CALIBRATION CONN. EL. 1'-10 7/16" [570] B.O.P. NOZZLE PROL. = 10" [254]
3	168 CG150 RF PRODUCED WATER TO TANKS NOZZLE PROL. = 9 3/4" [248]	7	60 CL150 RF CLOSED DRAIN TO TRUCK-OUT EL. 1'-10 7/16" [570] B.O.P. NOZZLE PROL. = 10" [254]	11	60 NPT SKID DRAIN EL. 6 1/4" [159]	12	60 NPT SKID DRAIN NOZZLE PROL. = 10" [254]
4	324 CL150 RF PRODUCED GAS TO COMPRESSOR NOZZLE PROL. = 10" [254]	8	60 CL150 RF PRODUCED GAS NOZZLE PROL. = 10" [254]				

PLAN VIEW
SCALE 3/8"=1'-0"

NOTES:

- 1) ALL PRIMARY DIMENSIONS ARE IN IMPERIAL AND ALL SECONDARY DIMENSIONS ARE IN MILLIMETERS 0'-0" [000].
- 2) ALL ELEVATIONS ARE TAKEN FROM TOP OF CHECKER PLATE REFERENCE EL. 0'-0" [000].
- 3) FOR PIPING SURFACE PREPARATION AND PAINT NOTES SEE INSTRUMENT LIST.
- 4) SHOP SUPPORT ALL PIPING AS REQUIRED.
- 5) ALL FRING UNDER 2" NPS IS SHOWN FOR REFERENCE ONLY.
- 6) ESTIMATED SHIPPING PACKAGE MASS: 177 000 lbs (80 455 kg).

CUSTOMER: DEVON NEC CORPORATION JOB NO. 5B1107-30

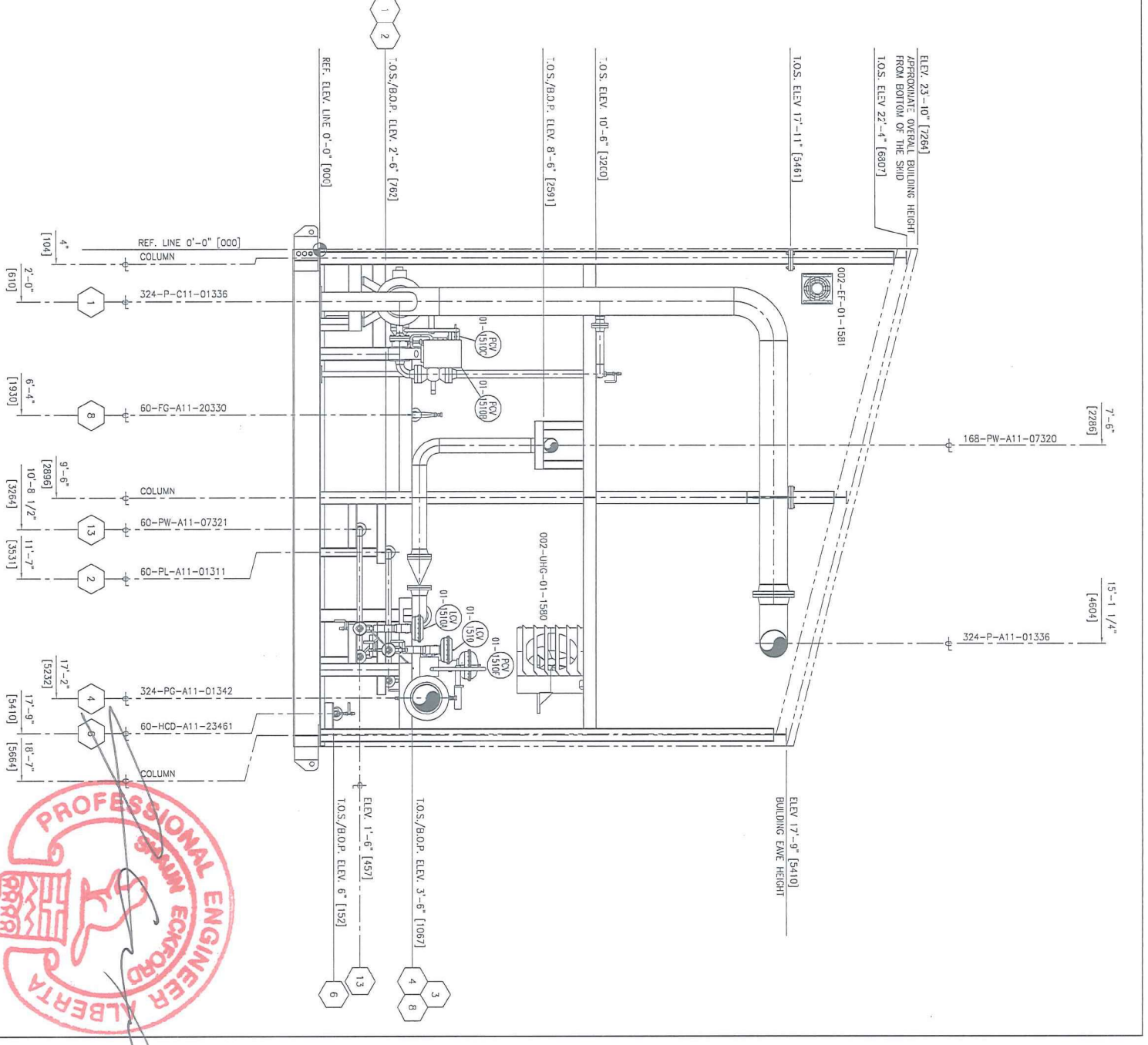
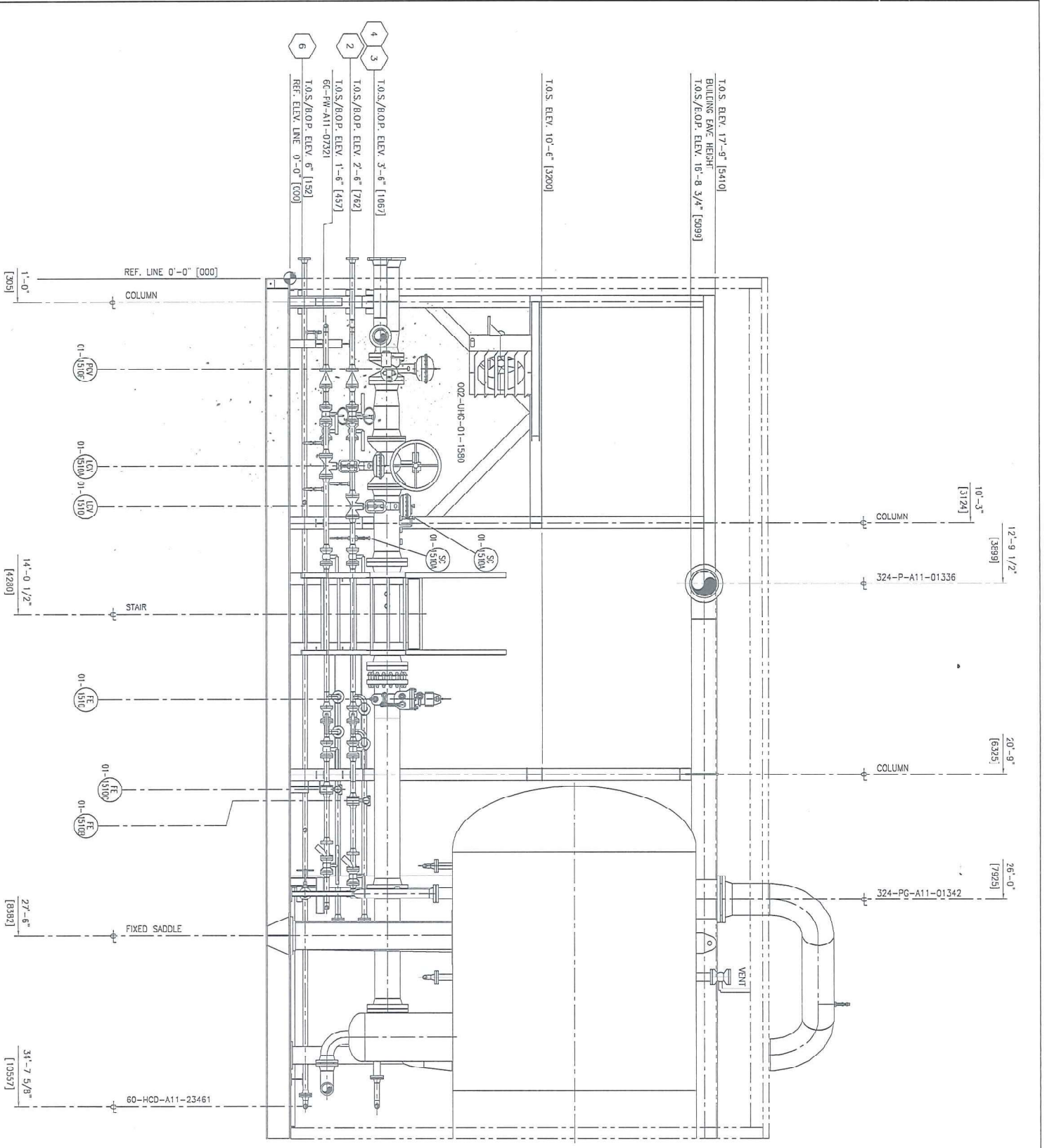
PROJECT: FERRIER CENTRAL OIL BATTERY - LIQUID EXTRACTION PLANT (LEP)

LOCATION: LSD 11-02-039-08 W5W

TITLE: L.P. INLET SEPARATOR PACKAGE (002-PK-01-1500)
GENERAL ARRANGEMENT - PLAN VIEW

DESIGN	CHECK	DATE	NO.	REV.
BS	BS	27/05/13	5B1107-02-DR-30-001	005





THE-IN SCHEDULE

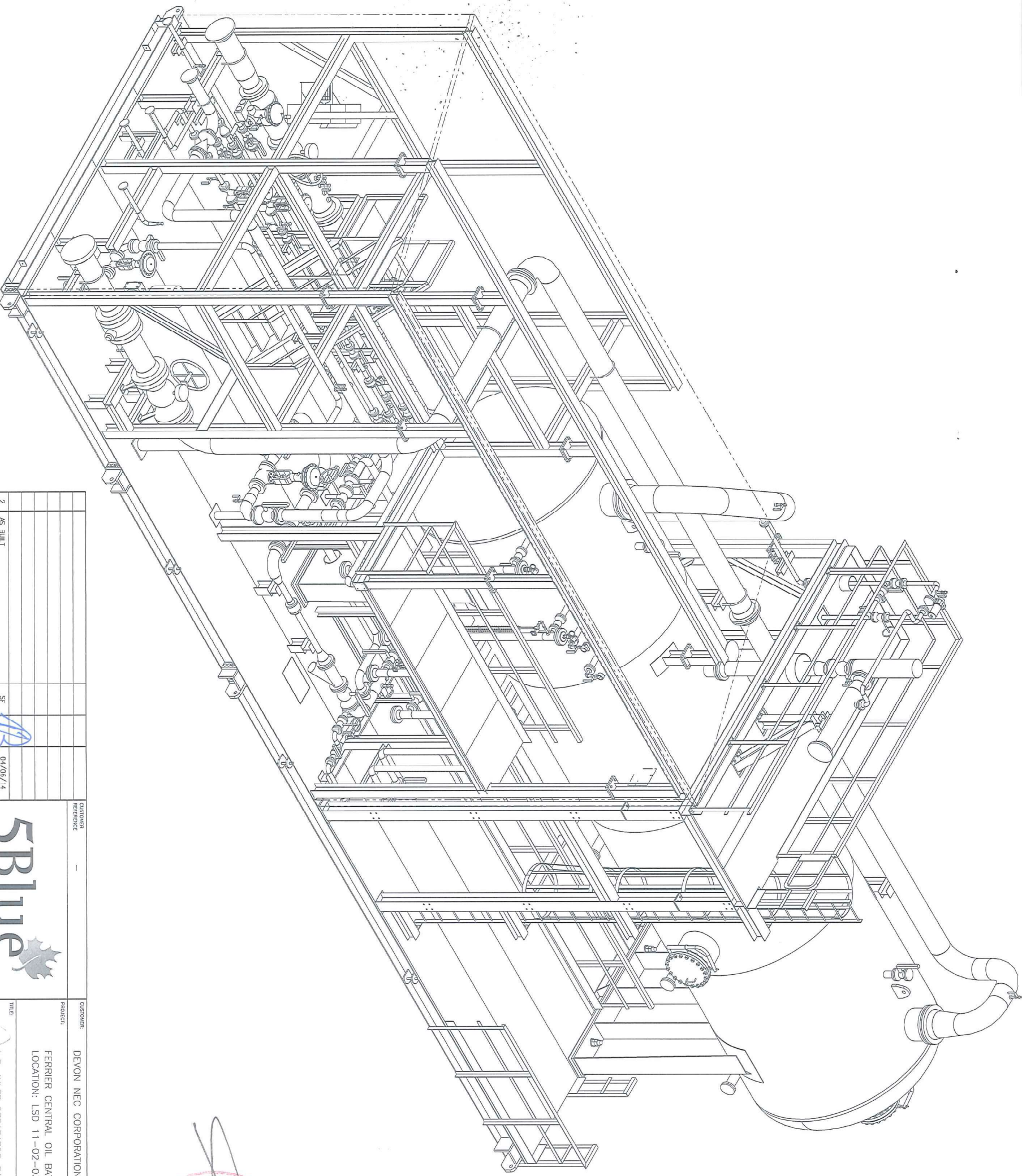
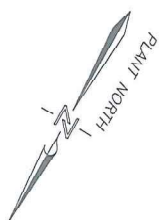
- 1 324 CL150 RF L.P. GAS, 2'-6" [762] B.O.P. NOZZLE PROU. = 10" [254]
- 2 60 CL150 RF NOZZLE TO STABILIZER PACKAGE NOZZLE PROU. = 9" [229]
- 3 168 CL150 RF PRODUCED WATER TO TANKS PRODUCED WATER TO COMPRESSOR NOZZLE PROU. = 9 3/4" [248]
- 4 324 CL150 RF L.P. GAS, 2'-6" [762] B.O.P. NOZZLE PROU. = 10" [254]
- 5 272 CL156 RF H.P. FLARE HEADER NOZZLE PROU. = 10" [254]
- 6 60 CL150 RF CLOSED DRAIN TO HEADER NOZZLE PROU. = 9 3/4" [248]
- 7 60 CL150 RF CLOSED DRAIN TO TRUCK-OUT NOZZLE PROU. = 10" [254]
- 8 60 CL150 RF FURGE GAS NOZZLE PROU. = 10" [254]
- 9A 60 CL150 RF H.C. CALIBRATION CONNECTIONS NOZZLE PROU. = 9 3/8" [244]
- 9B 60 CL150 RF PRODUCED WATER CALIBRATION CONN. NOZZLE PROU. = 10" [254]
- 9C 60 CL150 RF PRODUCED WATER CALIBRATION CONN. NOZZLE PROU. = 9 3/4" [248]
- 10A 60 CL150 RF PRODUCED WATER CALIBRATION CONN. NOZZLE PROU. = 10" [254]
- 10B 60 CL150 RF PRODUCED WATER CALIBRATION CONN. NOZZLE PROU. = 10" [254]
- 10C 60 CL150 RF PRODUCED WATER CALIBRATION CONN. NOZZLE PROU. = 10" [254]
- 10D 60 CL150 RF PRODUCED WATER CALIBRATION CONN. NOZZLE PROU. = 10" [254]
- 10E 60 CL150 RF PRODUCED WATER CALIBRATION CONN. NOZZLE PROU. = 10" [254]
- 10F 60 CL150 RF PRODUCED WATER CALIBRATION CONN. NOZZLE PROU. = 10" [254]
- 10G 60 CL150 RF PRODUCED WATER CALIBRATION CONN. NOZZLE PROU. = 10" [254]
- 10H 60 CL150 RF PRODUCED WATER CALIBRATION CONN. NOZZLE PROU. = 10" [254]
- 10I 60 CL150 RF PRODUCED WATER CALIBRATION CONN. NOZZLE PROU. = 10" [254]
- 10J 60 CL150 RF PRODUCED WATER CALIBRATION CONN. NOZZLE PROU. = 10" [254]
- 10K 60 CL150 RF PRODUCED WATER CALIBRATION CONN. NOZZLE PROU. = 10" [254]
- 10L 60 CL150 RF PRODUCED WATER CALIBRATION CONN. NOZZLE PROU. = 10" [254]
- 10M 60 CL150 RF PRODUCED WATER CALIBRATION CONN. NOZZLE PROU. = 10" [254]
- 10N 60 CL150 RF PRODUCED WATER CALIBRATION CONN. NOZZLE PROU. = 10" [254]
- 10O 60 CL150 RF PRODUCED WATER CALIBRATION CONN. NOZZLE PROU. = 10" [254]
- 10P 60 CL150 RF PRODUCED WATER CALIBRATION CONN. NOZZLE PROU. = 10" [254]
- 10Q 60 CL150 RF PRODUCED WATER CALIBRATION CONN. NOZZLE PROU. = 10" [254]
- 10R 60 CL150 RF PRODUCED WATER CALIBRATION CONN. NOZZLE PROU. = 10" [254]
- 10S 60 CL150 RF PRODUCED WATER CALIBRATION CONN. NOZZLE PROU. = 10" [254]
- 10T 60 CL150 RF PRODUCED WATER CALIBRATION CONN. NOZZLE PROU. = 10" [254]
- 10U 60 CL150 RF PRODUCED WATER CALIBRATION CONN. NOZZLE PROU. = 10" [254]
- 10V 60 CL150 RF PRODUCED WATER CALIBRATION CONN. NOZZLE PROU. = 10" [254]
- 10W 60 CL150 RF PRODUCED WATER CALIBRATION CONN. NOZZLE PROU. = 10" [254]
- 10X 60 CL150 RF PRODUCED WATER CALIBRATION CONN. NOZZLE PROU. = 10" [254]
- 10Y 60 CL150 RF PRODUCED WATER CALIBRATION CONN. NOZZLE PROU. = 10" [254]
- 10Z 60 CL150 RF PRODUCED WATER CALIBRATION CONN. NOZZLE PROU. = 10" [254]

- NOTES:**
- 1) ALL PRIMARY DIMENSIONS ARE IN IMPERIAL AND ALL SECONDARY DIMENSIONS ARE IN MILLIMETERS 0'-0" [000].
 - 2) ALL ELEVATIONS ARE TAKEN FROM TOP OF CHECKER PLATE REFERENCE EL. 0'-0" [000].
 - 3) FOR PIPING SURFACE PREPARATION AND PAINT NOTES SEE INSTRUMENT LIST.

NO.	REVISION	DATE	BY	CHK.	DATE
1	AS BUILT	04/05/14	SF		
2	GENERAL REVISION	09/11/13	RR		
3	ISSUE FOR CONSTRUCTION	26/07/13	BS		
4	ISSUE FOR APPROVAL	28/05/13	BS		

CUSTOMER REFERENCE	DEVON NEC CORPORATION	JOB NO.	SB1107-30
PRODUCER	FERRIER CENTRAL OIL BATTERY - LIQUID EXTRACTION PLANT (LEP)	LOCATION:	LSD 11-02-039-08 W5M
TITLE	L.P. INLET SEPARATOR PACKAGE (002-PK-01-1500)	SCALE	3/8"=1'-0"
	GENERAL ARRANGEMENT - SECTION VIEWS 'B-B' & 'C-C'	DATE	27/05/13
		DWG NO.	SB1107-02-DR-30-003
		SHEET NO.	005

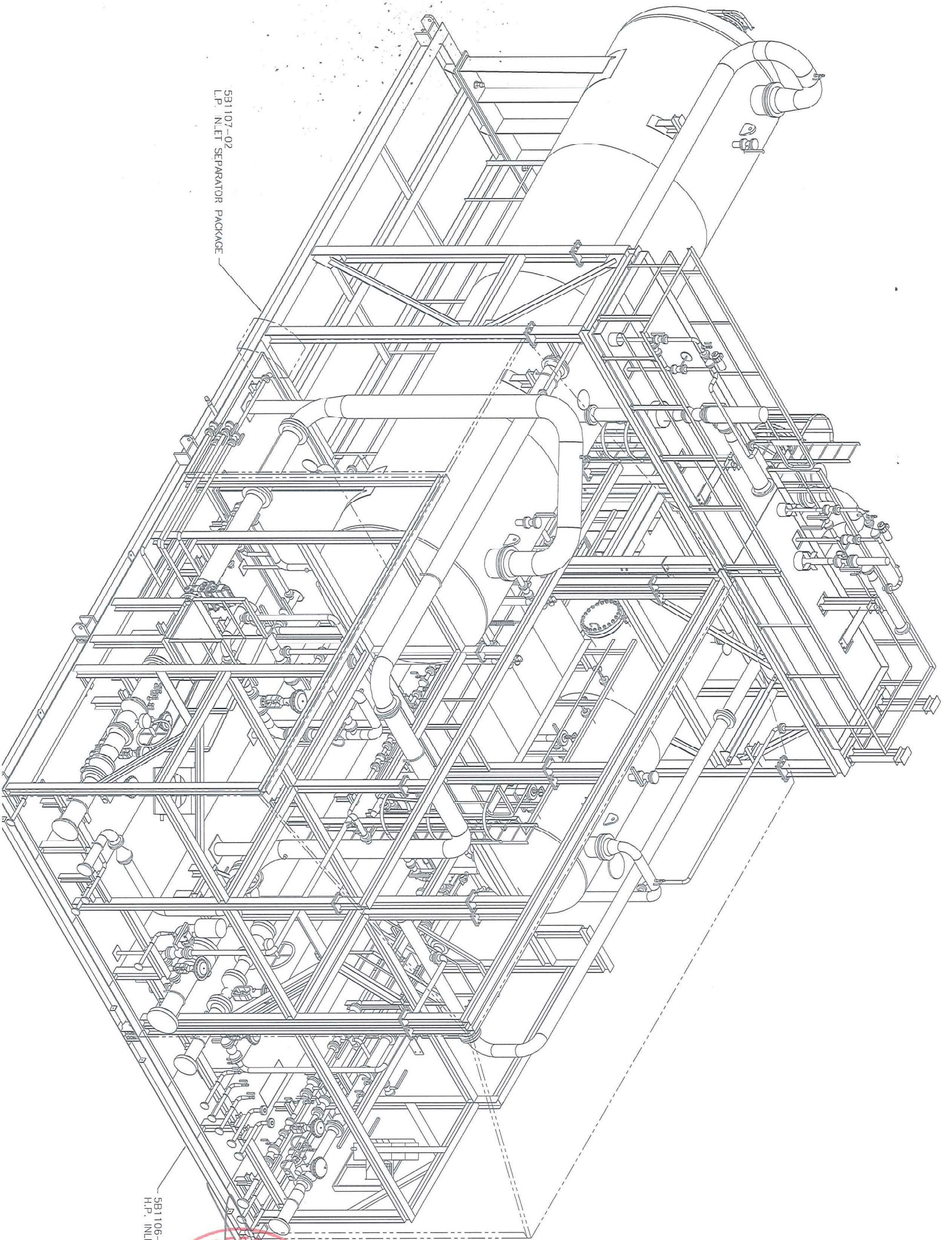
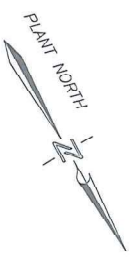




JUN 05 2014

NO.	REVISION	DATE	BY	CHK
2	AS BUILT	04/05/14	SF	
1	GENERAL REVISION	29/10/13	RR	
0	ISSUED FOR CONSTRUCTION	26/07/13	BS	
A	ISSUED FOR APPROVAL	28/05/13	BS	

 www.sblue.com		CUSTOMER: DEVON NEC CORPORATION PROJECT: FERRIER CENTRAL OIL BATTERY - LIQUID EXTRACTION PLANT (LEP) LOCATION: LSD 11-02-039-08 W5M	JOB NO.: 5B1107-30 DATE: 27/05/13 SHEET NO.: 005
TITLE: L.P. INLET SEPARATOR PACKAGE (002-PK-01-1500) ISOMETRIC VIEW		DRAWN BY: BS CHECKED BY: RR SCALE: NIS	DATE: 27/05/13 JOB NO.: 5B1107-02-DR-30-004 SHEET NO.: 005



5B1107-02
L.P. INLET SEPARATOR PACKAGE

5B1106-02
H.P. INLET SEPARATOR PACKAGE

JUN 05 2014



CUSTOMER REFERENCE		JOB NO.	
---		5B1107-30	
PROJECT		CUSTOMER	
FERRIER CENTRAL OIL BATTERY - LIQUID EXTRACTION PLANT (LEP)		DEVON NEC CORPORATION	
LOCATION: LSD 11-02-039-08 W5M			
TITLE			
L.P. INLET SEPARATOR PACKAGE (002-PK-01-1500)			
ISOMETRIC VIEW			
DESIGN	CHKD	SCALE	DATE
BS	BS	NIS	27/05/13
NO.	BY	CHKD	DATE
	BS	BS	28/05/13
REVISION			
A	ISSUED FOR APPROVAL		
C	ISSUED FOR CONSTRUCTION	BS	26/07/13
1	GENERAL REVISION	RR	09/11/13
2	AS BUILT	SF	04/09/14



Process Equipment Inc.
www.sblue.com