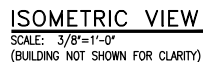



1. THIS DRAWING IS TO BE READ IN CONJUNCTION WITH THE MECHANICAL FLOWSHEET.
2. PROCESS PIPING TO BE DESIGNED TO ASME B31.3 2012 EDITION AND REGISTERED IN ALBERTA.
3. PRESSURE VESSELS ARE TO BE REGISTERED IN ALBERTA.
4. VESSELS AND PIPING TO BE INSULATED AS PER FLOWSHEET AND/OR FABRICATION DRAWINGS.
5. PAINTING AS PER GS-6100:
 - **UNINSULATED VESSEL & PIPING, INDOOR STRUCTURAL (SYSTEM P1):**
 - SURFACE PREPARATION: SSPC-SP6
 - PRIMER: 4-6 mils CLOVAGUARD 8315 EPOXY
 - FINISH: 2-3 mils CLOVATHANE 834 POLYURETHANE
 - (VESSEL & PIPING 16376 LIGHT GRAY, STRUCTURAL 15090 BLUE, LADDERS & HANDRAILS FS13581 SAFETY YELLOW)
 - **INSULATED VESSEL & PIPING (SYSTEM P3):**
 - SURFACE PREPARATION: SSPC-SP10
 - PRIMER: 5-8 mils CLOVALINE 8329 HEAVY DUTY EPOXY NOVOLACLINING (GREY)
 - FINISH: NONE
 - GRATING:
 - GALVANIZED
6. ALL ELEVATIONS SHOWN ARE FROM TOP OF MAIN SKID MEMBERS. DEPTH OF SKID IS 1'-0 1/4".
7. ALL SKID EDGE CONNECTIONS TO BE HELD AT DIMENSIONS AND ELEVATIONS SHOWN FOR CUSTOMER TIE-INS.
8. SKID IS DESIGNED FOR A SIX (6) POINT LIFT.
9. **1/4" SERVICE VENTING:** BLEED TYPE INSTRUMENTS, REGULATOR BONNETS, INSTRUMENT CASES AND CONTROL VALVE ACTUATORS ARE NOT VENTED.
10. 1"6" INSTRUMENT AIR HEADER AS SHOWN ON FLOWSHEET (SHOP TO RUN AS REQ'D) WITH 1/4" TAKE-OFFS C/W ISOLATION NEEDLE VALVE, REGULATOR, AND TUBING TO COMPLETE.
11. REMOVE ALL FLOATS/DISPLACERS FROM ALL LEVEL CONTROLLERS AND SWITCHES. TAG AND CRATE FOR SHIPPING.
12. ALL INSTRUMENTATION LOCATIONS ARE PROVIDED WITH SS TACS FOR FIELD RE-INSTALLATION.
13. **ALL INSTRUMENTS SHALL BE TAGGED AS FOLLOWS: 002-XX-21-XXXX, SO PG-2016 WOULD BE TAGGED: 002-PG-21-2016.**
14. PROTECT ALL OPENINGS FOR SHIPPING.
15. ESTIMATED SHIPPING WEIGHT UNIT: 93,000 lbs.

- 2'-8" PIPE USE 1/2" 316 SS (0.035") TUBING;
- 10" PIPE USE 3/4" 316 SS (0.049") TUBING;
- SS BANDING TO SECURE TRACING;
- SHOP TO SEE PROJECT MANAGER FOR INSTALLATION DETAILS.

002-V-21-2016



- ONE (1) UNIT REQUIRED

						DRAWN	BGR	 GAS & OIL PRODUCTION EQUIPMENT LTD. <small>*OP OF THE ALCO GAS & OIL PRODUCTION EQUIPMENT LIMITED PARTNERSHIP.</small>	<p>The information contained herein is the confidential property of Alco Gas and Oil Production Equipment Ltd. It is loaned for publication. The information is issued on the understanding that no part thereof may be copied or communicated to a third party without the written consent of Alco Gas and Oil Production Equipment Ltd.</p>
	F	2013-11-29	BGR			DATE	2013-08-06		
	G	2013-10-16	BGR			SCALE	NTS		
	E	2013-10-	BGR			CHK'D			
	D	2013-09-11	BGR						
	C	2013-08-25	BGR						
	B	2013-08-02	BGR						
	A	2013-08-06	BGR						
D-2013-8426-SIF-001/003	MECHANICAL FLOWSHEET								
DWG.	DESCRIPTION	REV.	DATE	BY	CHK'D	DESCRIPTION			
REFERENCE DRAWINGS						REVISIONS			
						DWG./SHOP ORDER:		D-2013-8426-51A-001/003	REV. G