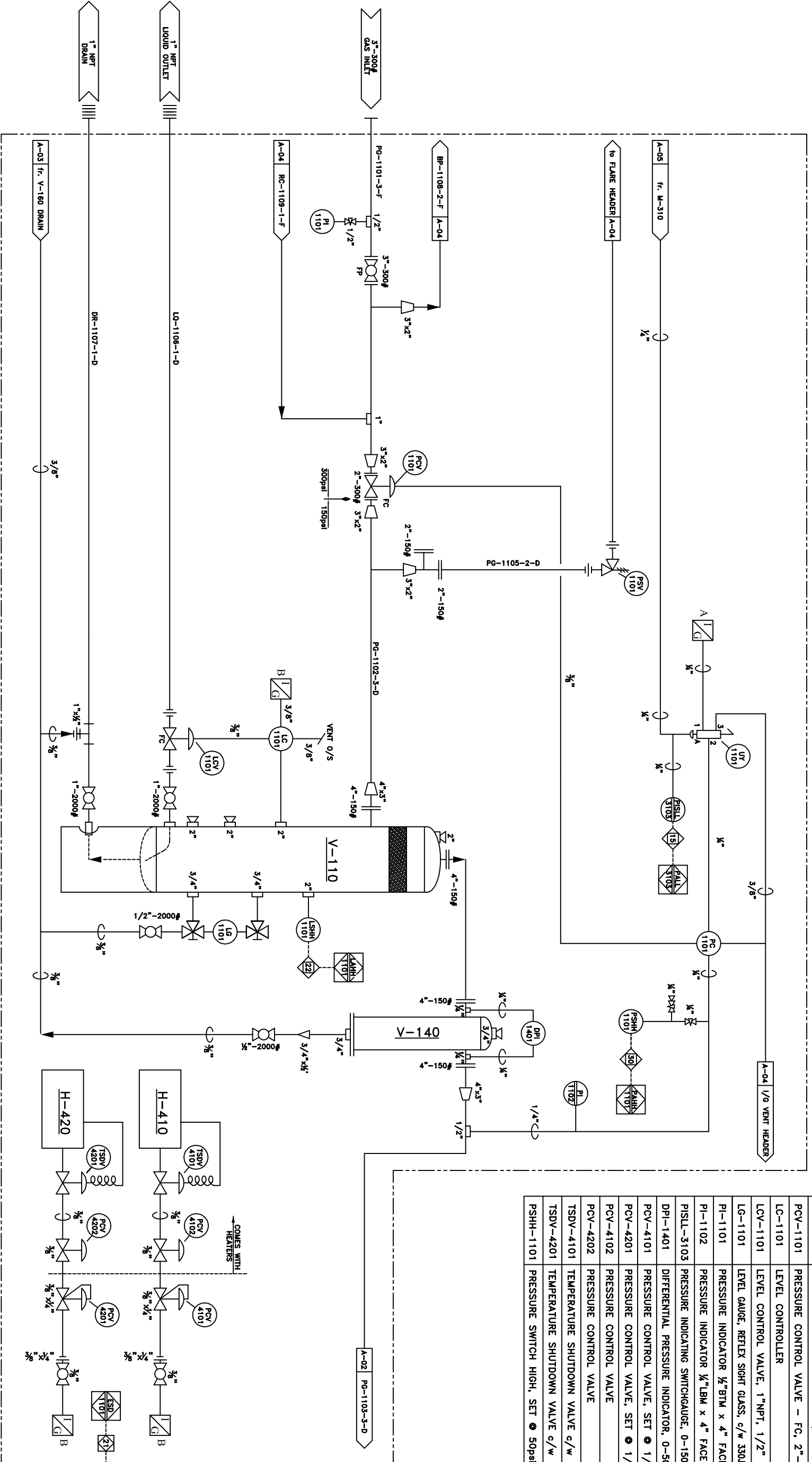


V-110
SUCTION SCRUBBER
 Manufacturer: EPF COMPRESSION-CALGARY
 Size: 24" x 48" S/S
 Rated: 285psi @ 100°F
 1/8" CA

V-140
INLET GAS FILTER
 Manufacturer: PLASMA TEC INDUSTRIES LTD.
 Type: PARTICULATE
 Rated: 180psi @ 450°F
 10 MICRON
 1/8" CA

H-410
NATURAL GAS HEATER
 Manufacturer: CIS-CAN
 Size: 24"x24"
 16,000 btu/hr
 12 Volt Start
 Protection Grill

H-420
NATURAL GAS HEATER
 Manufacturer: CIS-CAN
 Size: 24"x24"
 16,000 btu/hr
 12 Volt Start
 Protection Grill



LINE SPEC.

A	=	20psi
B	=	50psi
C	=	100psi
D	=	150psi
E	=	250psi
F	=	300psi

MATERIAL LIST

ITEM	DESCRIPTION	MAKE	MODEL
PSV-1101	PRESSURE SAFETY VALVE, 2"x2" NPT, SET @ 150psi	MERCER	G ORIFICE
HS-1101	EMERGENCY SHUTDOWN HAND SWITCH	TELMCANIQUE	#XAL B174H29H7
LSHH-1101	LEVEL SHUTDOWN HIGH	MURPHY	L1200
UY-1101	PRESSURE SWITCH, 3 WAY VALVE, TYPE CP	AMOT	4057D025H2
PCV-1101	PRESSURE CONTROLLER, 0-100psi S/R	FISHER	4150KR
PCV-1101	PRESSURE CONTROL VALVE - FC, 2"-300# V-BALL	FISHER	V200
LCV-1101	LEVEL CONTROLLER	FISHER	FSL2-XB
LCV-1101	LEVEL CONTROL VALVE, 1"NPT, 1/2" PORT, FC	FISHER	D2 FLO PRO
LG-1101	LEVEL GAUGE, REFLEX SIGHT GLASS, c/w 330I GAUGE VALVES	PENBERTHY	1RM-7STLNE
PI-1101	PRESSURE INDICATOR 1/2" BTM x 4" FACE, 0-2800kPa	WIKA	SSLF
PI-1102	PRESSURE INDICATOR 1/2" LBM x 4" FACE, -100/700kPa	WIKA	SSLF
PISSL-3103	PRESSURE INDICATING SWITCHGAUGE, 0-150psi/0-1000kPa	MURPHY	A25PEF-150
DPI-1401	DIFFERENTIAL PRESSURE INDICATOR, 0-50" W.C.	MID-WEST	141AA-00-00
PCV-4101	PRESSURE CONTROL VALVE, SET @ 1/2psi	FISHER	912N
PCV-4201	PRESSURE CONTROL VALVE, SET @ 1/2psi	FISHER	912N
PCV-4102	PRESSURE CONTROL VALVE	FISHER	912N
PCV-4202	PRESSURE CONTROL VALVE	FISHER	912N
TSDV-4101	TEMPERATURE SHUTDOWN VALVE c/w HEATER	BASO	ES404
TSDV-4201	TEMPERATURE SHUTDOWN VALVE c/w HEATER	BASO	ES404
PSHH-1101	PRESSURE SWITCH HIGH, SET @ 50psi	CCS	H17GB-5
			H17GB-5
			6900GZE16

LINE TYPE LEGEND

	PROCESS TUBING/ INSTRUMENT SUPPLY
	MAIN PROCESS GAS
	SECONDARY PROCESS
	UTILITY PROCESS
	PNEUMATIC SIGNAL
	HYDRAULIC SIGNAL
	ELECTRIC SIGNAL

REV.	DESCRIPTION	DATE	BY
1	AS BUILT	06-06-12	CAJ ENG
0	ISSUED FOR CONSTRUCTION	06-02-07	WST SE

ENERFLEX

5221-46th St. Stirling Alberta
 Box 1450, T0C 2L2
 Phone: 403.742.5538
 Fax: 403.742.5539

7400 SERIES COMPRESSOR
 G.D. SSM w/ 3306 NA ENGINE
 TRAILER MOUNTED, SOUR SERVICE

COMPANY: PETRO CANADA
 JOB NO.: 74162

Drawn by: ASR
 Checked by:
 Approved by:
 DATE: 06-02-07
 SCALE: N.T.S.
 DRAWING NO.: CDL-74162-A-01
 REV.: 1