

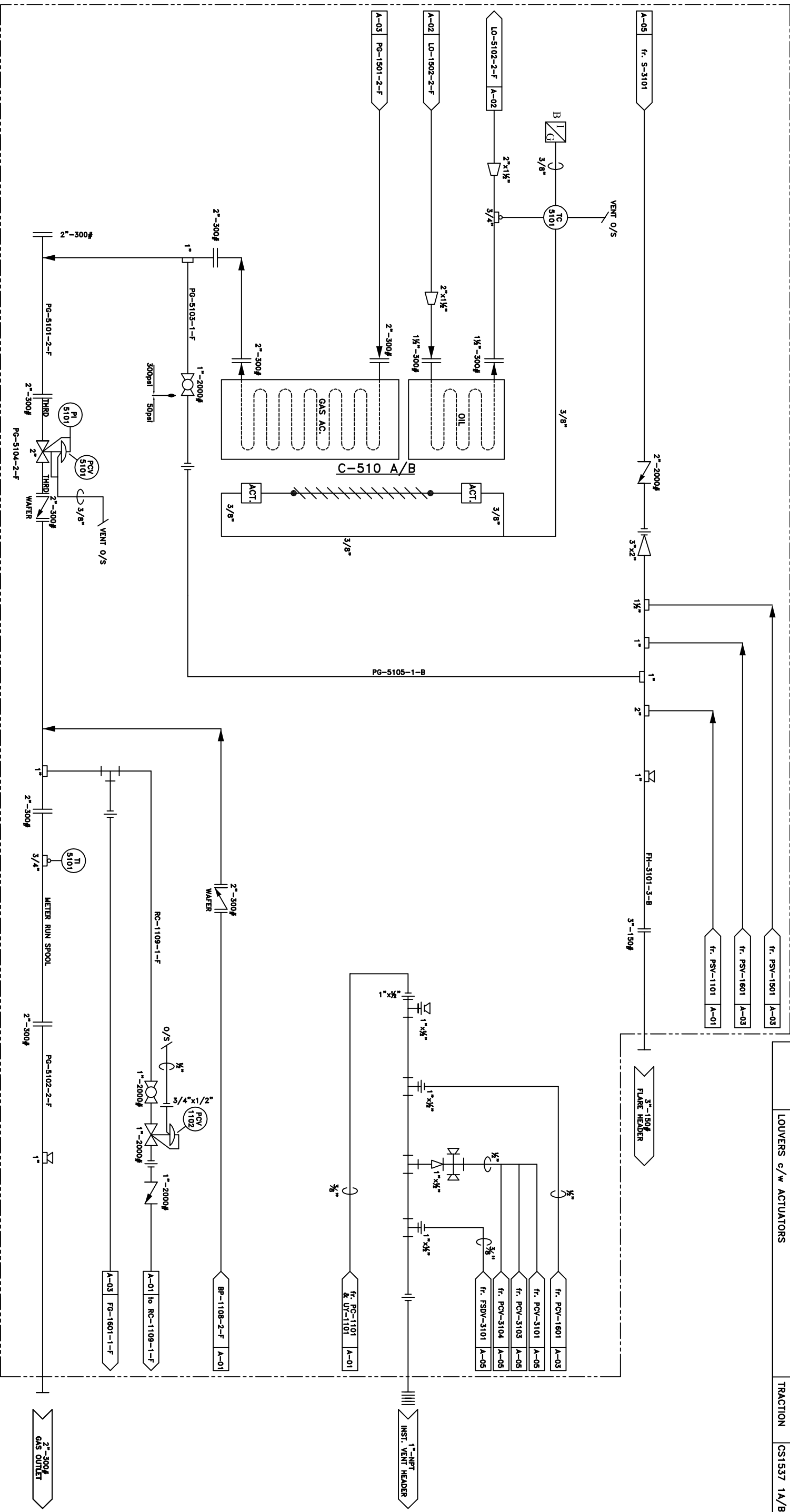
C-510 A/B

OIL/GAS AFTER COOLER

Manufacturer: WUXI GUANYUN HEAT EXCHANGER CO. LTD.
 Model: GHTJ-1600 (SPLIT)
 Rated: 370psi @ 250°F
 Aluminum Header
 Aluminum Tubes

MATERIAL LIST

ITEM	DESCRIPTION	MAKE	MODEL
PCV-1102	PRESSURE CONTROL VALVE SET @ 5-20psi, 3/8" PORT	FISHER	627-552
PCV-5101	BACK PRESSURE CONTROL VALVE	KIMRAY	2305GTBPD-V
PI-5101	PRESSURE INDICATOR 1/2" LM x 2 1/2" FACE, 0-2100kPa	WIKA	SSLF
TI-5101	TEMPERATURE INDICATOR 3" FACE, -20 TO 120°C	TREND	2 1/2" STEM
TC-5101	TEMPERATURE CONTROLLER	KIMRAY	HT-12
	LOUVERS c/w ACTUATORS	TRACTION	CS1537 1A/B



LINE TYPE LEGEND

	PROCESS TUBING/ INSTRUMENT SUPPLY
	MAIN PROCESS GAS
	SECONDARY PROCESS
	UTILITY PROCESS
	PNEUMATIC SIGNAL
	HYDRAULIC SIGNAL
	ELECTRIC SIGNAL

REV.	DESCRIPTION	DATE	BY	CHKD	APPD
1	AS BUILT	06-06-12	CAJ	ENG	
0	ISSUED FOR CONSTRUCTION	06-02-07	WST	SE	

ENERFLEX

5221-46th St. Stoffer, Alberta
 Box 1450, T0C 2L2 Phone: 403.742.5538
 Fax: 403.742.5539

7400 SERIES COMPRESSOR
 G.D. SSM w/ 3306 NA ENGINE
 TRAILER MOUNTED, SOUR SERVICE

COMPANY: PETRO CANADA
 Drawn by: ASR
 Checked by:
 Approved by:
 DATE: 06-02-07
 SCALE: N.T.S.
 DRAWING NO.: CDL-74162-A-04
 JOB NO.: 74162
 REV.: 1