

SPP-7011-A
LP COMPRESSOR
AUX LOADS

⚠ DANGER
Overcurrent protection devices, such as fuses or circuit breakers, can result in serious injury or death. Always read the instructions carefully.

THE STAB ASSEMBLY ON THIS UNIT IS RATED 30 AMPS MAXIMUM. DO NOT EXCEED THIS RATING.

UNIT SHORT-CIRCUIT RATING
100,000 RMS SYMMETRICAL AMPERES, 240 VOLTS
65,000 RMS SYMMETRICAL AMPERES, 480 VOLTS

CU1-228AF-ARB-S2GM-2
SERIAL NO. 8883375
DESCRIPTION: 3 Pole 208V/240V/480V
RATING: 125 AF/30 AT 480V/240V/208V
PLANT: 1240
MANUFACTURED ON: 09/18/08/13
Allen-Bradley PRODUCT OF ITALY

WIRING DIAGRAM:
E-3000235552
ELEMENT LIST:
E

IF CENTRALIZED DIAGNOSIS IS REQUIRED,
CONTACT THE SERVICE CENTER FOR THE
APPLICABLE AND LATEST WIRING CADD

UL US LISTED
MO-OR CONTROL CENTER UNIT
TO ANSI
PLAN 4T
Allen-Bradley

LP COMPRESSOR
AUX LOADS # 2

LP COMPRESSOR
AUX LOADS # 2



SPARE

DANGER
Failure to follow the safety instructions in this manual may result in personal injury or death. Always use proper safety practices when working with electrical equipment.

ON

CAUTION
Do not touch the fan blades.

TO INSURE PROPER INTERLOCKING AND LATCHING THIS UNIT MUST BE USED WITH A STYLE 3 UNIT SUPPORT PAN WITH A LATCH/INTERLOCK BUSHING INSTALLED

SPARE

ON

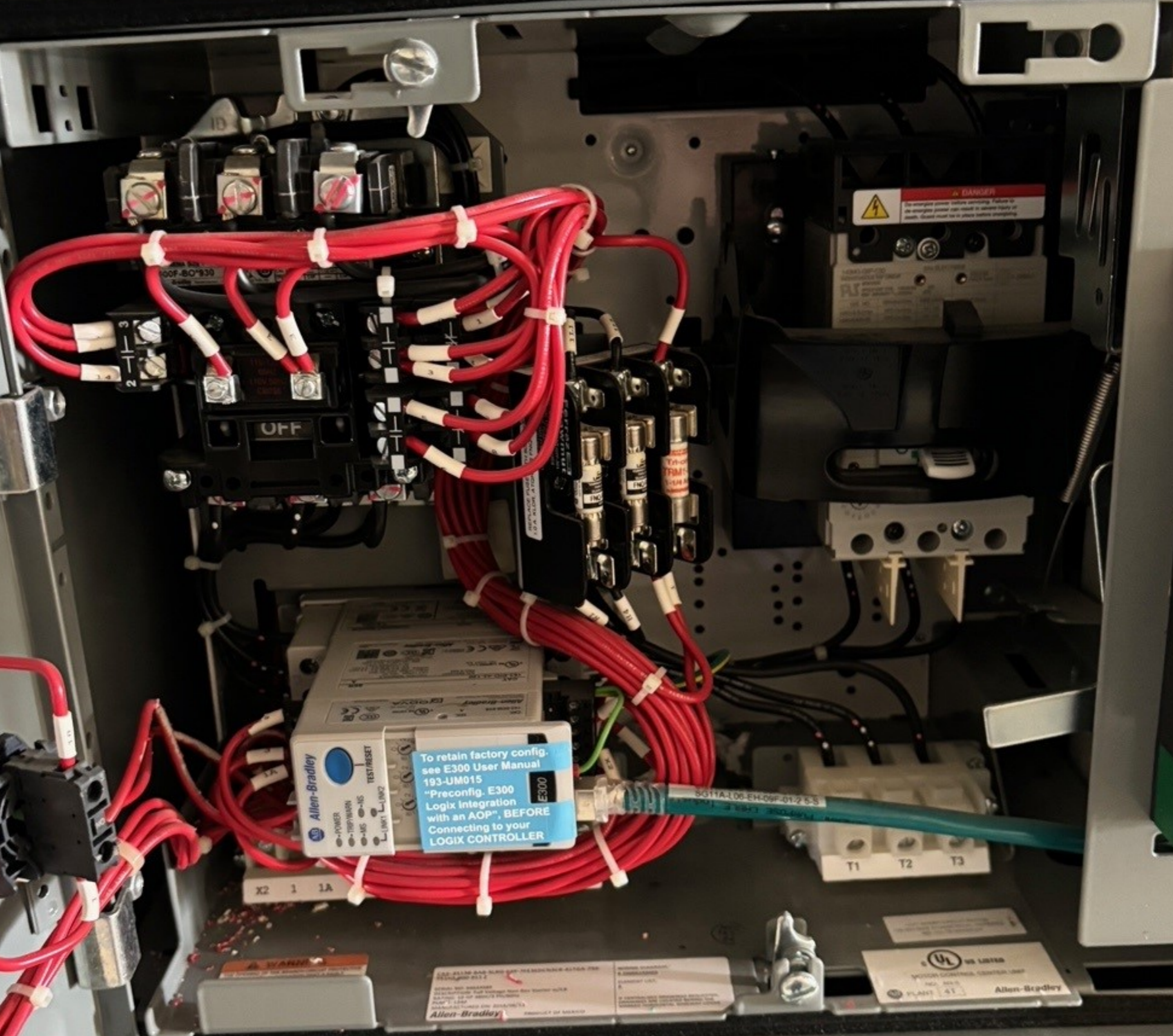
R



SPARE

ON I

OFF O



AC-4010C
OIL COOLER
FAN # 3

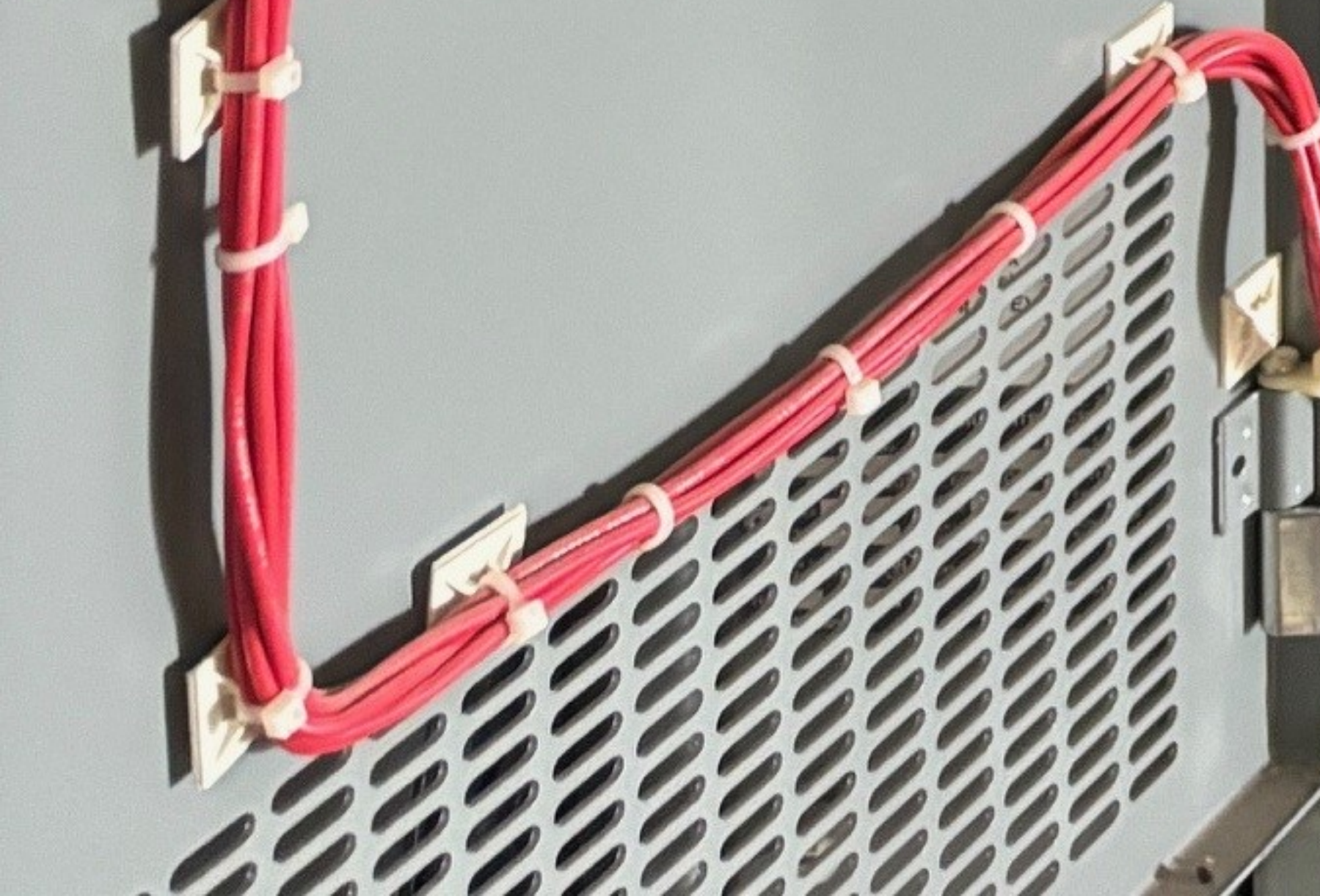
ON I

OFF
RESET

AC-4010C
OIL COOLER
FAN # 3

P-5010A
LACT CHARGE
PUMP





Internal view of the electrical cabinet showing the Allen-Bradley PowerFlex 753 drive and associated components.

CAUTION
THE AREA IMMEDIATELY AROUND THE AC DRIVE MUST BE KEPT FREE OF OBSTRUCTIONS TO ALLOW FOR PROPER COOLING. DO NOT PLACE ANY ADDITIONAL COMPONENTS IN THIS CABINET WITHOUT THERMAL TESTING AND/OR EVALUATION. PLACING ADDITIONAL COMPONENTS IN THIS CABINET MAY LEAD TO OVERHEATING, TRIPPING AND/OR MALFUNCTIONS OF THE AC DRIVE.

PowerFlex 753
Allen-Bradley

Terminal block labels:
 - P-5010A Line 1
 - P-5010A Line 2
 - P-5010A Line 3

Other components include a terminal block with green wires, a terminal block with red and black wires, and a terminal block with blue and green wires.

WARNING / **AVERTISSEMENT**

Read these instructions carefully before attempting to install, operate, maintain, or repair this equipment. Failure to follow these instructions may result in injury or death.

Do not use solvents near the equipment. Solvents may damage the equipment and cause fire or explosion.

The opening of the front cover of the equipment may be hazardous. Do not touch the internal components of the equipment. Do not touch the internal components of the equipment when the front cover is open.

Follow all applicable safety regulations and standards when working on this equipment.

DANGER

Arc Flash and shock hazard

Will cause severe injury or death.

Wear proper Personal Protective Equipment (PPE).

Follow ALL regulatory requirements for safe work practices and for Personal Protective Equipment (PPE).

PH-25229

Allen-Bradley

ETHERNET S
#2

P-5010B
LACT CHARGE
PUMP



P-5013C
LACT PIPELINE

P-5013A
LACT PIPELINE
PUMP # 1

P-5013B
LACT PIPELINE
PUMP # 2



ETHERNET SWITCH

#2

Allen-Bradley
Stratix 5700

user: admin password: rockwell
IP: 192.168.1.30 Subnet mask: 255.255.255.0

Console
Setup EIP EIP
Net Mod

DC+
DC-
Pwr B
DC+

Alarm
IN1 IN2 OUT

Com
+5V
GND

Allen-Bradley

ETH2

Allen-Bradley
Stratix

user: admin password: rockwell
IP: 192.168.1.31 Subnet mask: 255.255.255.0

Console
Express Setup

DC-
DC+
Pwr B
DC+

Alarm
IN1 IN2 OUT

Com
+5V
GND

Allen-Bradley

UL LISTED
MOTOR-CONTROLLED CENTER UNIT
NO. 3004
PLANT 47
Allen-Bradley

P-5010B
LACT CHARGE

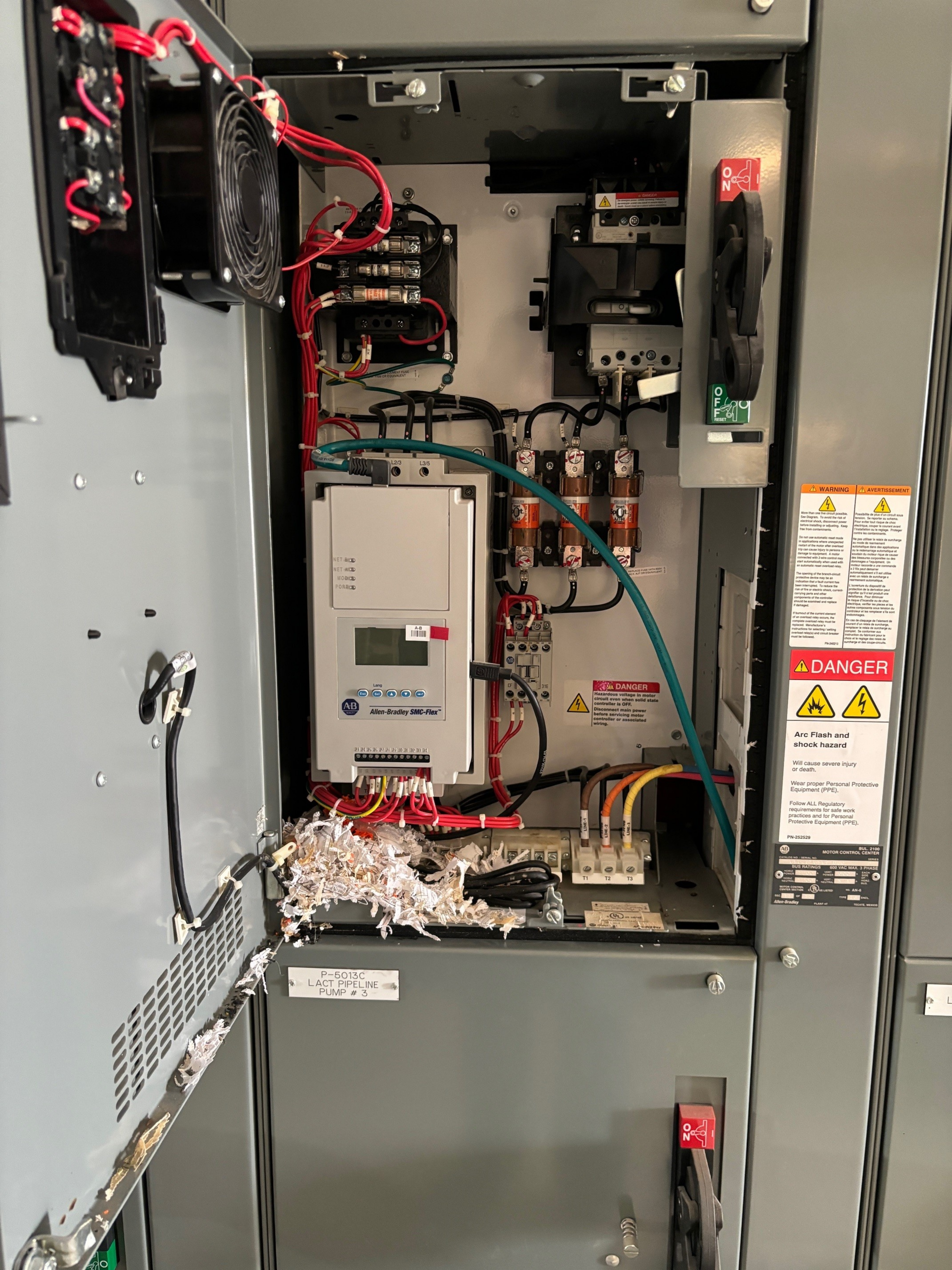
P-5010B
LACT CHARGE
PUMP



WARNING ⚠️ **AVERTISSEMENT**

⚡
One live circuit possible.
To avoid the risk of
shock, disconnect power
before working. Keep
contaminants.

⚡
Possibilité de plus d'un circuit sous
tension. Se reporter au schéma.
Pour éviter tout risque de choc
électrique, couper le courant avant
l'installation ou le réglage. Protéger
contre les contaminants.



P-5013C
LACT PIPELINE
PUMP # 3

NET
NET
MOD
POR

Lang

Allen-Bradley SMC-Flex™

7 1 2 3 4 5 6 7 8 9 10 11 12

LINE-1
LINE-2
LINE-3

DANGER
Hazardous voltage in motor circuit even when solid state controller is OFF. Disconnect main power before servicing motor controller or associated wiring.

WARNING / **AVERTISSEMENT**

More than one live circuit possible. See Diagram. To avoid the risk of electrical shock, disconnect power before installing or adjusting. Keep free from contaminants.

Do not use automatic reset mode in applications where unpermitted restart of the motor after overload trip can cause injury to persons or damage to equipment. A motor connected with 3-wire control may start automatically when used with an automatic reset overload relay.

The opening of the branch-circuit protective device may be an indication that a fault current has been interrupted. To reduce the risk of fire or electric shock, current-carrying parts and other components of the controller should be examined and replaced if damaged.

If burnout of the current element of an overload relay occurs, the complete overload relay must be replaced. Manufacturer's instructions for selecting / setting overload relays and circuit breakers must be followed.

PN-242213

DANGER

Arc Flash and shock hazard

Will cause severe injury or death.

Wear proper Personal Protective Equipment (PPE).

Follow ALL Regulatory requirements for safe work practices and for Personal Protective Equipment (PPE).

PN-252529

BUL 2100
MOTOR CONTROL CENTER

CATALOG NO. SERIAL NO. ISSUE

BUS RATINGS 600 VAC MAX. 3 PHASE

MODEL: _____ VOLT: _____ AMP: _____

PHASE: _____ MOTOR: _____

MOTOR CONTROL CENTER SECTION _____ INCH LISTED _____

Allen-Bradley PLANT AT _____ TYPE _____ ENCL. _____

P-5013C
LACT PIPELINE
PUMP # 3



⚠ DANGER
An energized panel contains live wiring. Failure to de-energize panel can result in serious injury or death. Death could be permanent or long-lasting.

VFD 5813C
L1

VFD 5813C
L2

ON

OFF
RESET

P-5013D
LACT PIPELINE
PUMP # 4

Allen Bradley
UL LISTED

UL LISTED
Allen Bradley

P-5013D
LACT PIPELINE
PUMP # 4

DANGER
De-energize power before servicing. Failure to de-energize power can result in severe injury or death. Guard must be in place before servicing.

Model	Rating	Terminal	Terminal	Terminal
MEG-200-D17	1000V AC	1	2	3
MEG-200-D17	1000V AC	4	5	6
MEG-200-D17	1000V AC	7	8	9
MEG-200-D17	1000V AC	10	11	12
MEG-200-D17	1000V AC	13	14	15
MEG-200-D17	1000V AC	16	17	18
MEG-200-D17	1000V AC	19	20	21
MEG-200-D17	1000V AC	22	23	24
MEG-200-D17	1000V AC	25	26	27
MEG-200-D17	1000V AC	28	29	30
MEG-200-D17	1000V AC	31	32	33
MEG-200-D17	1000V AC	34	35	36
MEG-200-D17	1000V AC	37	38	39
MEG-200-D17	1000V AC	40	41	42
MEG-200-D17	1000V AC	43	44	45
MEG-200-D17	1000V AC	46	47	48
MEG-200-D17	1000V AC	49	50	51
MEG-200-D17	1000V AC	52	53	54
MEG-200-D17	1000V AC	55	56	57
MEG-200-D17	1000V AC	58	59	60
MEG-200-D17	1000V AC	61	62	63
MEG-200-D17	1000V AC	64	65	66
MEG-200-D17	1000V AC	67	68	69
MEG-200-D17	1000V AC	70	71	72
MEG-200-D17	1000V AC	73	74	75
MEG-200-D17	1000V AC	76	77	78
MEG-200-D17	1000V AC	79	80	81
MEG-200-D17	1000V AC	82	83	84
MEG-200-D17	1000V AC	85	86	87
MEG-200-D17	1000V AC	88	89	90
MEG-200-D17	1000V AC	91	92	93
MEG-200-D17	1000V AC	94	95	96
MEG-200-D17	1000V AC	97	98	99
MEG-200-D17	1000V AC	100	101	102

VFD 5013D
L1

VFD 5013D
L2

VFD 5013D
L3

ON

OFF
RESET

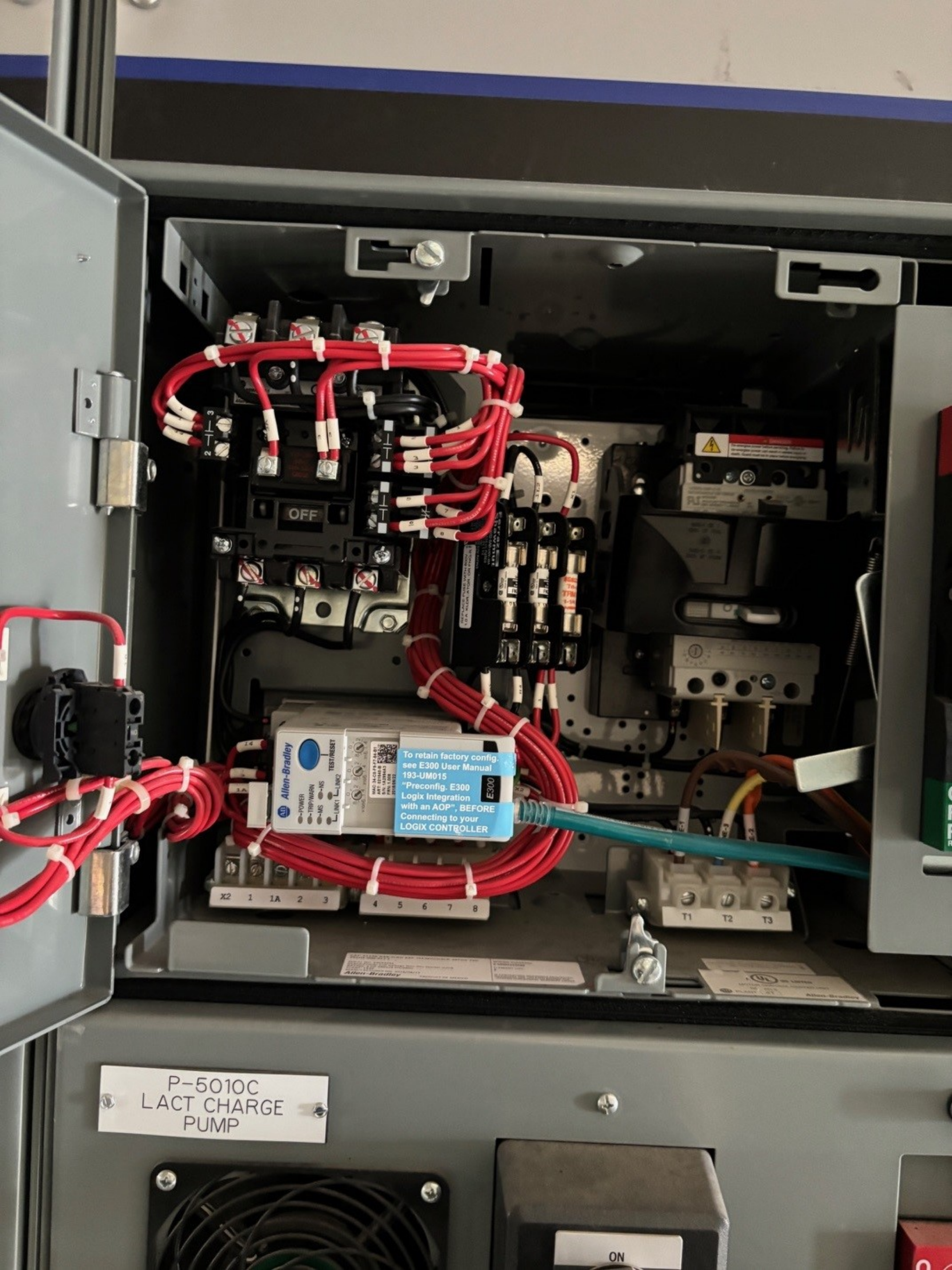
CAT-200-AL-31142
SERIAL 200-1001
DESCRIPTION: 2 Pole Breaker Circuit Breaker (MCR)
DATE: 2/24/17 AT 480V/3 PHASE
PLANT: 1780
Allan-Bradley
PRODUCT OF MEXICO

WARNING: DO NOT
REPLACE LIST
E.
IF CENTRALIZED EMERGENCY STOPPED,
REPLACE AND LOCATED BEHIND THE
EMERGENCY STOPPED COVER

UL US LISTED
MOTOR CONTROL CENTER UNIT
N.A. AH-S
ALL PLANT 4T
Allan-Bradley

P-9010

FLARE KNOCKOUT
PUMP



Allen-Bradley
E300
To retain factory config, see E300 User Manual 193-UM015
"Preconfig. E300 Logix Integration with an AOP", BEFORE Connecting to your LOGIX CONTROLLER

P-5010C
LACT CHARGE
PUMP

ON

X2 1 1A 2 3

4 5 6 7 8

T1 T2 T3

OFF

Warning
CAUTION
High Voltage
Do not touch terminals or components when power is applied.
Always use proper lockout/tagout procedures.
Always use proper safety practices.
Always use proper PPE.
Always use proper lifting techniques.
Always use proper electrical safety practices.
Always use proper electrical safety practices.
Always use proper electrical safety practices.

DO NOT TOUCH TERMINALS OR COMPONENTS WHEN POWER IS APPLIED.
ALWAYS USE PROPER LOCKOUT/TAGOUT PROCEDURES.
ALWAYS USE PROPER SAFETY PRACTICES.
ALWAYS USE PROPER PPE.
ALWAYS USE PROPER LIFTING TECHNIQUES.
ALWAYS USE PROPER ELECTRICAL SAFETY PRACTICES.
ALWAYS USE PROPER ELECTRICAL SAFETY PRACTICES.
ALWAYS USE PROPER ELECTRICAL SAFETY PRACTICES.

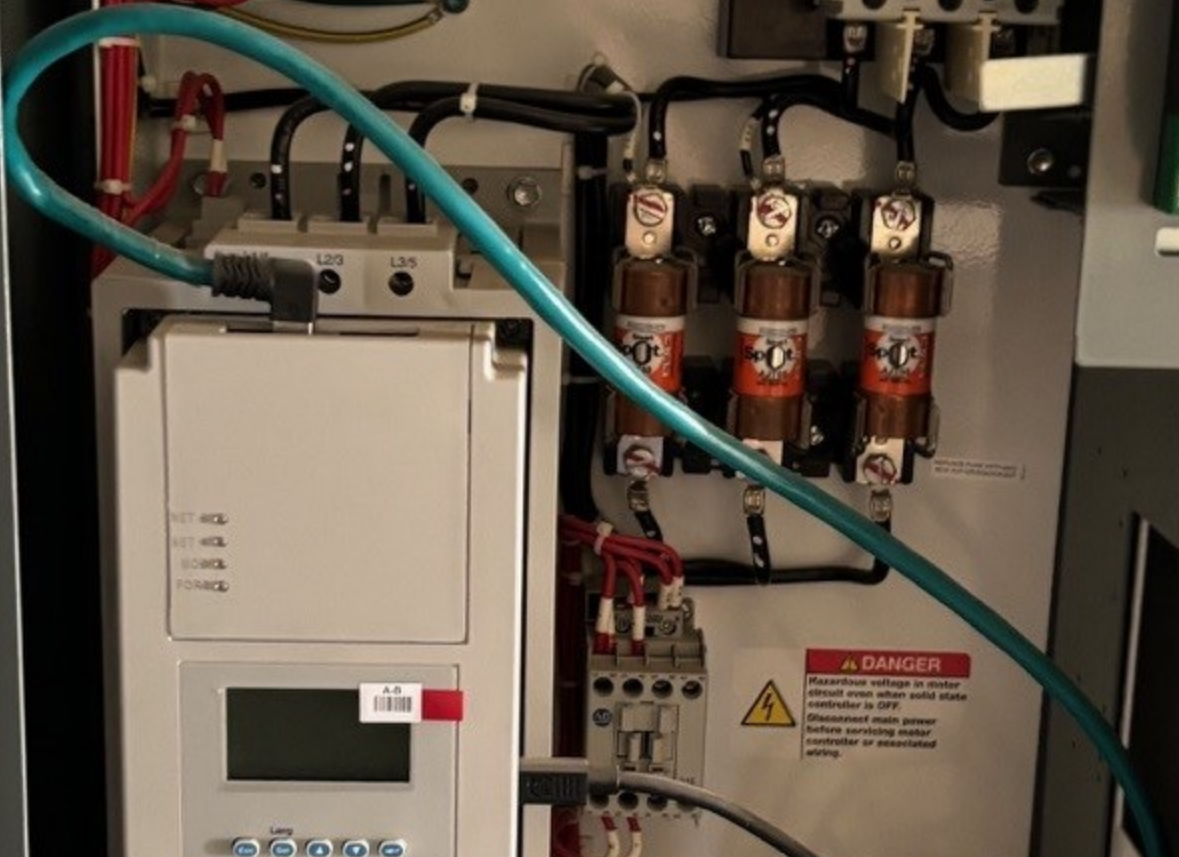
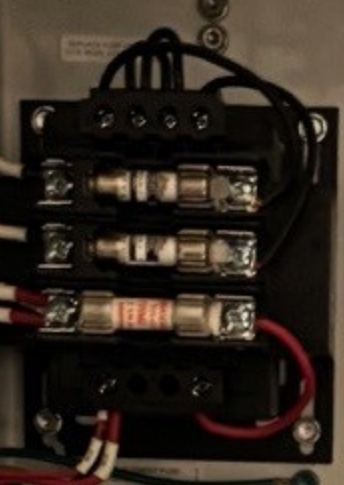
E300

Allen-Bradley
193-UM015
E300 User Manual
Logix Integration with an AOP

Allen-Bradley
193-UM015
E300 User Manual
Logix Integration with an AOP

P-5010C
LACT CHARGE
PUMP





⚠ DANGER
Hazardous voltage in motor control center when solid state controller is OFF.
Disconnect main power before servicing motor controller or associated wiring.



⚠ WARNING **⚠ AVOID**

There are live wires inside the cabinet. To avoid the risk of electrical shock, disconnect power before working or adjusting. Keep the door closed.

The use of an automatic reset switch in applications where unexpected contact of the door after contact with the door stop is possible or required. A motor connected with a cable control may start automatically when used with an automatic reset switch.

The opening of the cabinet could produce a fire or an explosion if a fault occurs that has not been corrected. To reduce the risk of fire or explosion, correct wiring and other components of the controller should be inspected and repaired if required.

If removal of the current element of an automatic reset switch, the controller will not stop until the manufacturer's instructions for servicing safety interlocks are followed and the reset switch is manually reset or released.

It is not safe to work on the controller when the door is open. The controller should be locked and tagged when the door is open.

It is not safe to work on the controller when the door is open. The controller should be locked and tagged when the door is open.

It is not safe to work on the controller when the door is open. The controller should be locked and tagged when the door is open.

⚠ DANGER



Arc Flash and shock hazard

Will cause severe injury or death.
Wear proper Personal Protective Equipment (PPE).
Follow ALL Regulatory requirements for safe work practices and for Personal Protective Equipment (PPE).

PH-252529

Model	Size	Rating	Max. Amps	Max. Volts
100	100	100	100	100
150	150	150	150	150
200	200	200	200	200
250	250	250	250	250
300	300	300	300	300
350	350	350	350	350
400	400	400	400	400
450	450	450	450	450
500	500	500	500	500
550	550	550	550	550
600	600	600	600	600
650	650	650	650	650
700	700	700	700	700
750	750	750	750	750
800	800	800	800	800
850	850	850	850	850
900	900	900	900	900
950	950	950	950	950
1000	1000	1000	1000	1000

P-5013E
LACT PIPELINE
PUMP # 5

BUL. 2100
L CENTER

SERIES

1

3 PHASE

EACH
SIDE
OF
HORZ.
BUS

N-6

ENCL.

TECATE, MEXICO



P-5013E
LACT PIPELINE
PUMP # 5



P-5013F
LACT PIPELINE
PUMP # 6

MFD 5811E
L1

MFD 5811E
L2

MFD 5811E
L3

ON

OFF
RESET

NO

OFF
RESET

P-5013F
LACT PIPELINE
PUMP # 6

