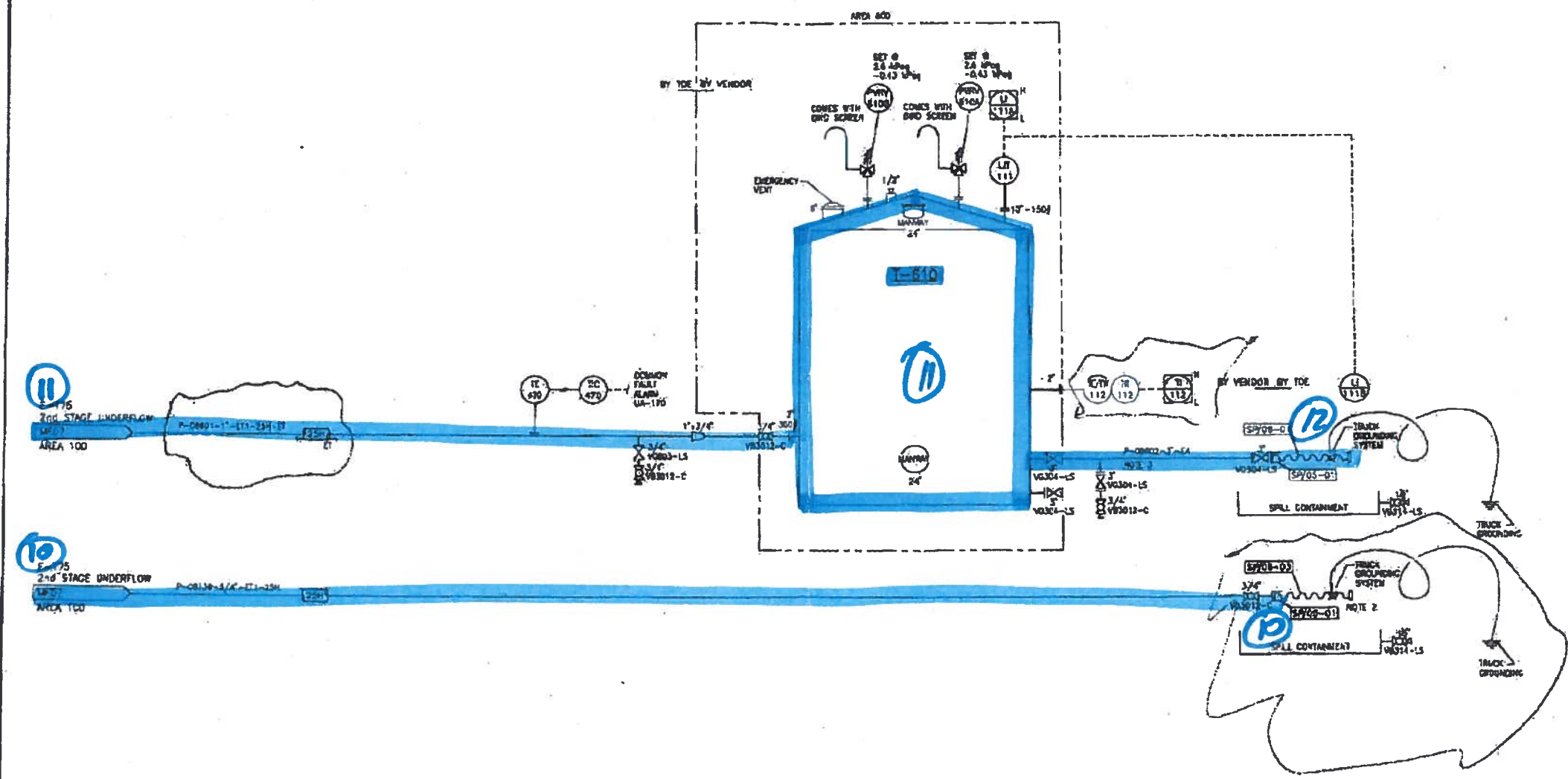


T-810
UNDERFLOW PRODUCT
 SIZE: 3759mm OD x 3962mm H (41.3m³) - 260661
 DESIGN: ATM
 INSULATION: 75mm
 CONSTRUCTION: SINGLE WALL STEEL



ACTION TAKEN
 AFTER HAZOP

- NOTES:**
1. ALL INSTRUMENTATION WILL BE PROVIDED BY 'BOUT'
 2. UNDERFLOW CONTROL SYSTEMS BRANDED FLEX HOSE TO VICIUM TRUCK.
 3. KEEP LINE AS SHORT AS POSSIBLE.

REVISIONS				PROFESSIONAL STAMP				PROJECT INFORMATION			
NO.	DATE	BY	DESCRIPTION	NAME	DISCIPLINE	PROJECT NO.	PROJECT PHASE	SCALE	DATE	PROJECT NO.	PROJECT PHASE
00	08 FEB 04	GM	ISSUED FOR DESIGN	JFP	JMS	NU	JMS				
01	08 FEB 04	GM	ISSUED FOR DESIGN	JFP	DAJ	RCU	JMS				
02	08 FEB 04	GM	ISSUED FOR DESIGN	JFP	DAJ	RCU	JMS				
03	08 FEB 04	GM	ISSUED FOR DESIGN	JFP	DAJ	RCU	JMS				
04	08 FEB 04	GM	ISSUED FOR DESIGN	JFP	DAJ	RCU	JMS				
05	08 FEB 04	GM	ISSUED FOR DESIGN	JFP	DAJ	RCU	JMS				
06	08 FEB 04	GM	ISSUED FOR DESIGN	JFP	DAJ	RCU	JMS				
07	08 FEB 04	GM	ISSUED FOR DESIGN	JFP	DAJ	RCU	JMS				
08	08 FEB 04	GM	ISSUED FOR DESIGN	JFP	DAJ	RCU	JMS				
09	08 FEB 04	GM	ISSUED FOR DESIGN	JFP	DAJ	RCU	JMS				
10	08 FEB 04	GM	ISSUED FOR DESIGN	JFP	DAJ	RCU	JMS				
11	08 FEB 04	GM	ISSUED FOR DESIGN	JFP	DAJ	RCU	JMS				
12	08 FEB 04	GM	ISSUED FOR DESIGN	JFP	DAJ	RCU	JMS				
13	08 FEB 04	GM	ISSUED FOR DESIGN	JFP	DAJ	RCU	JMS				
14	08 FEB 04	GM	ISSUED FOR DESIGN	JFP	DAJ	RCU	JMS				
15	08 FEB 04	GM	ISSUED FOR DESIGN	JFP	DAJ	RCU	JMS				
16	08 FEB 04	GM	ISSUED FOR DESIGN	JFP	DAJ	RCU	JMS				
17	08 FEB 04	GM	ISSUED FOR DESIGN	JFP	DAJ	RCU	JMS				
18	08 FEB 04	GM	ISSUED FOR DESIGN	JFP	DAJ	RCU	JMS				
19	08 FEB 04	GM	ISSUED FOR DESIGN	JFP	DAJ	RCU	JMS				
20	08 FEB 04	GM	ISSUED FOR DESIGN	JFP	DAJ	RCU	JMS				

SHELL • TRI OCEAN • FLINT
 TRI • ALLIANCE
 COMPLEX
 ALBERTA

FILE
FROTH TREATMENT TEST FACILITY
AREA 000 UNDERFLOW PRODUCT TANK AREA
PIPING & INSTRUMENTATION DIAGRAM (P&ID)

SCALE: NTS
 DATE: 2008 MAR 20
 PROJECT NO.: 08207-0-00-BC-00014.01
 SHELL SPEC: XX-XX-MF14