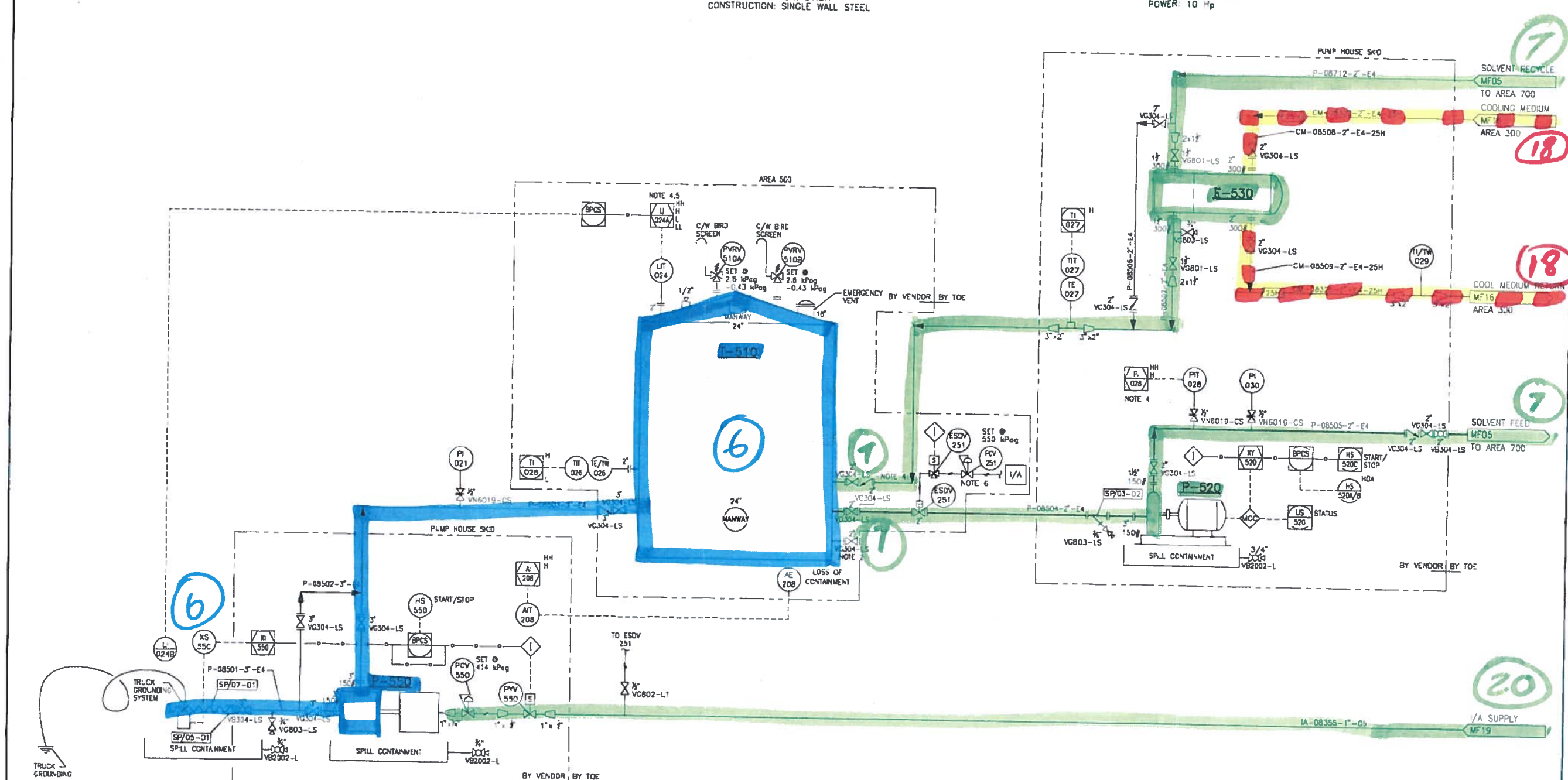


P-550
SOLVENT TRUCK UNLOADING PUMP
 CAPACITY: 600L/min
 DIFFERENTIAL PRESSURE: 200 kPa(g)
 POWER: BY AIR

T-510
SOLVENT STORAGE TANK
 SIZE: 4724mm OD x 4877mm H (79.4m³) (500b1)
 DESIGN: ATM
 INSULATION: 37.5H
 CONSTRUCTION: SINGLE WALL STEEL

P-520
SOLVENT RECIRCULATION PUMP
 CAPACITY: 200L/min
 DIFFERENTIAL PRESSURE: 590 kPa
 POWER: 10 Hp

E-530
SOLVENT COOLER
 REQUIRED DUTY: 71kW



- NOTES:**
1. ALL INSTRUMENTATION WILL BE PREFIXED BY: "500"
 2. CLEAN-OUT.
 3. REFER TO P&ID XX-XX-MF18 AND S/D KEY FOR H.H. SHUT DOWN.
 4. SOLVENT RECYCLE INLET CLOSE TO TANK BOTTOM.
 5. LAH-024 TO SHUT DOWN P-520 LAH-024 TO SHUT DOWN P-550 REFER TO SD KEY.
 6. PVC 251 TO BE SHIPPED LOOSE.

NO.	DATE	BY	CHKD	DESCRIPTION
D4	08 APR 07	JRP	ONK	ISSUED FOR DESIGN
D3	08 FEB 04	GR	EG	ISSUED FOR DESIGN
D2	08 OCT 24	ROM	JRP	ISSUED FOR DESIGN
D1	08 MAY 30	FOS	JRP	ISSUED FOR DESIGN
C1	08 APR 30	FOS	JRP	ISSUED FOR HAZOP
B1	08 APR 15	FOS	JRP	ISSUED FOR CLIENT REVIEW
A1	08 APR 10	FOS	JRP	ISSUED FOR INTERNAL REVIEW

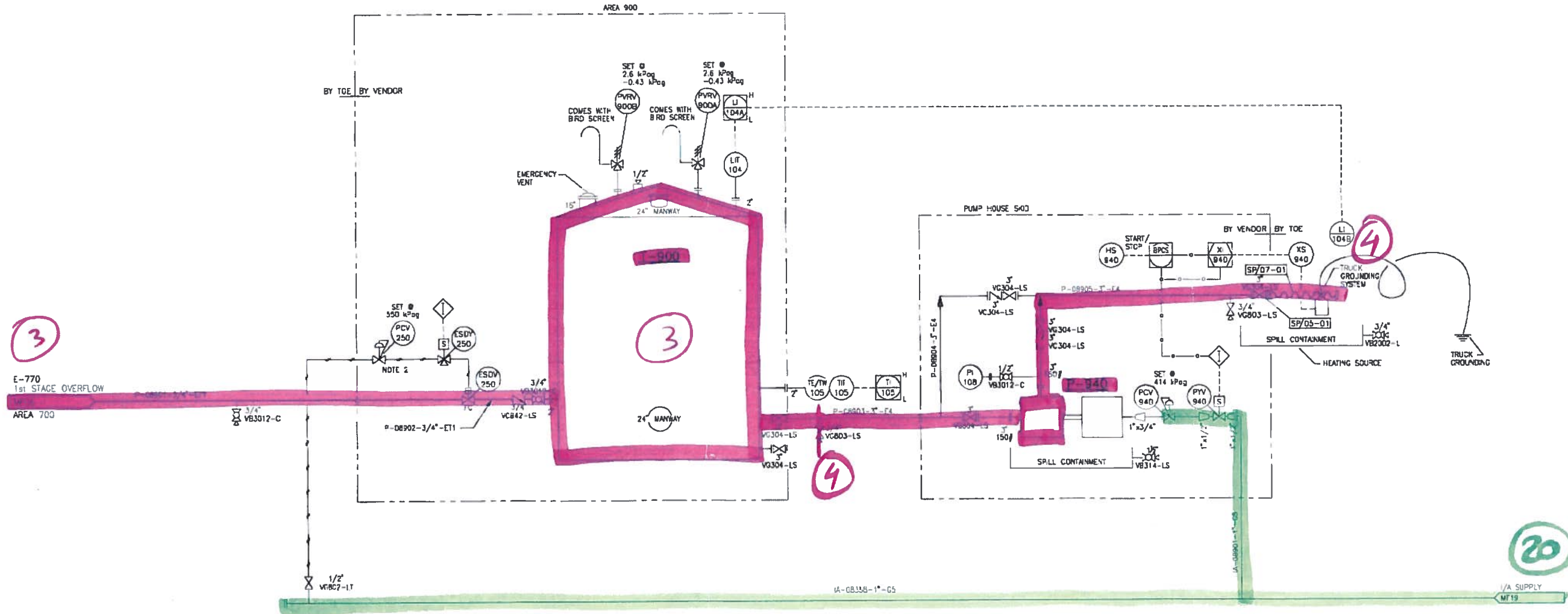
DESIGN/DRFT/CD-DESIGNER	LEAD DISCIPLINE	PROJECT LEAD	PROJECT MANAGER
JRP	JMS	NU	KYN
JRP	JMS	NU	KYN
JRP	DJA	RCU	KYN
JRP	DJA	RCU	KYN
JRP	DJA	RCU	TAM
JRP	DJA	RCU	JTD
JRP	DJA		

PROFESSIONAL STAMP	ASRC ENERGY SERVICES TRI OCEAN ENGINEERING LTD. APEGGA PERMIT P2034
--------------------	---

SHELL • TRI OCEAN • FLINT TRI • ALLIANCE SHELL CANADA LIMITED COMPLEX ALBERTA	
TITLE FROTH TREATMENT TEST FACILITY AREA 500 SOLVENT TANK AREA PIPING & INSTRUMENTATION DIAGRAM (P&ID)	
OWN BY FGS	DATE 2008 MAR 29
SCALE NTS	TCE DRG NO. 08207-0-DG-BC-00004.01
	REV. D4

P-800
PRODUCT TANK
 SIZE: 4724mm ODx4877mm H -500361
 DESIGN: ATM
 INSULATION: 37.5mm
 CONSTRUCTION: SINGLE WALL STEEL

P-940
PRODUCT TANK TRUCK
LOADING PUMP
 CAPACITY: 600 L/min
 DIFF. PRESS: 150kPa
 POWER: BY AIR



NOTES:

1. ALL INSTRUMENTATION WILL BE PREFIXED BY: "800".
2. PCV-250 TUBE SHIPPED LOOSE.

NO.	DATE	DRW.	CHK'D	DESCRIPTION	DESIGN/CHART CO-ORDINATOR	LEAD COORDINATOR	PROJECT LEAD	PROJECT MANAGER
D4	08 APR 07	OMK	JRP	RE-ISSUED FOR DESIGN	JRP	JNS	NU	KYN
D3	08 FEB 04	GR	EG	REISSUED FOR DESIGN	JRP	JNS	NU	KYN
D2	08 OCT 24	ROM	JRP	REISSUED FOR DESIGN	JRP	DJA	RCU	KYN
D1	08 MAY 30	FGS	JRP	ISSUED FOR DESIGN	JRP	DJA	RCU	KYN
C1	08 APR 30	TJG	JRP	ISSUED FOR HAZOP	JRP	DJA	RCU	TAM
B1	08 APR 15	FGS	JRP	ISSUED FOR CLIENT REVIEW	JRP	DJA	RCU	JTD
A1	08 APR 10	FGS	JRP	ISSUED FOR INTERNAL REVIEW	JRP	DJA		

PROFESSIONAL STAMP	DESIGN/CHART CO-ORDINATOR	LEAD COORDINATOR	PROJECT LEAD	PROJECT MANAGER
	JRP	JNS	NU	KYN
	JRP	JNS	NU	KYN
	JRP	DJA	RCU	KYN
	JRP	DJA	RCU	TAM
	JRP	DJA	RCU	JTD
	JRP	DJA		

ASRC ENERGY SERVICES TRI OCEAN ENGINEERING LTD APEGGA PERMIT P2034			
--	--	--	--

SHELL • TRI OCEAN • FLINT TRI • ALLIANCE SHELL CANADA LIMITED COMPLEX ALBERTA			
FILE FROTH TREATMENT TEST FACILITY AREA 900 PRODUCT TANK AREA PIPING & INSTRUMENTATION DIAGRAM (P&ID)			
DRAWN BY	DATE	TOE DWG. NO.	REV.
FGS	2008 MAR 29	08207-0-DG-BC-00012.01	D4
SCALE	CHGD FILE	SHELL DWG. NO.	
NTS	01201-0SAJ	XX-XX-MF12	