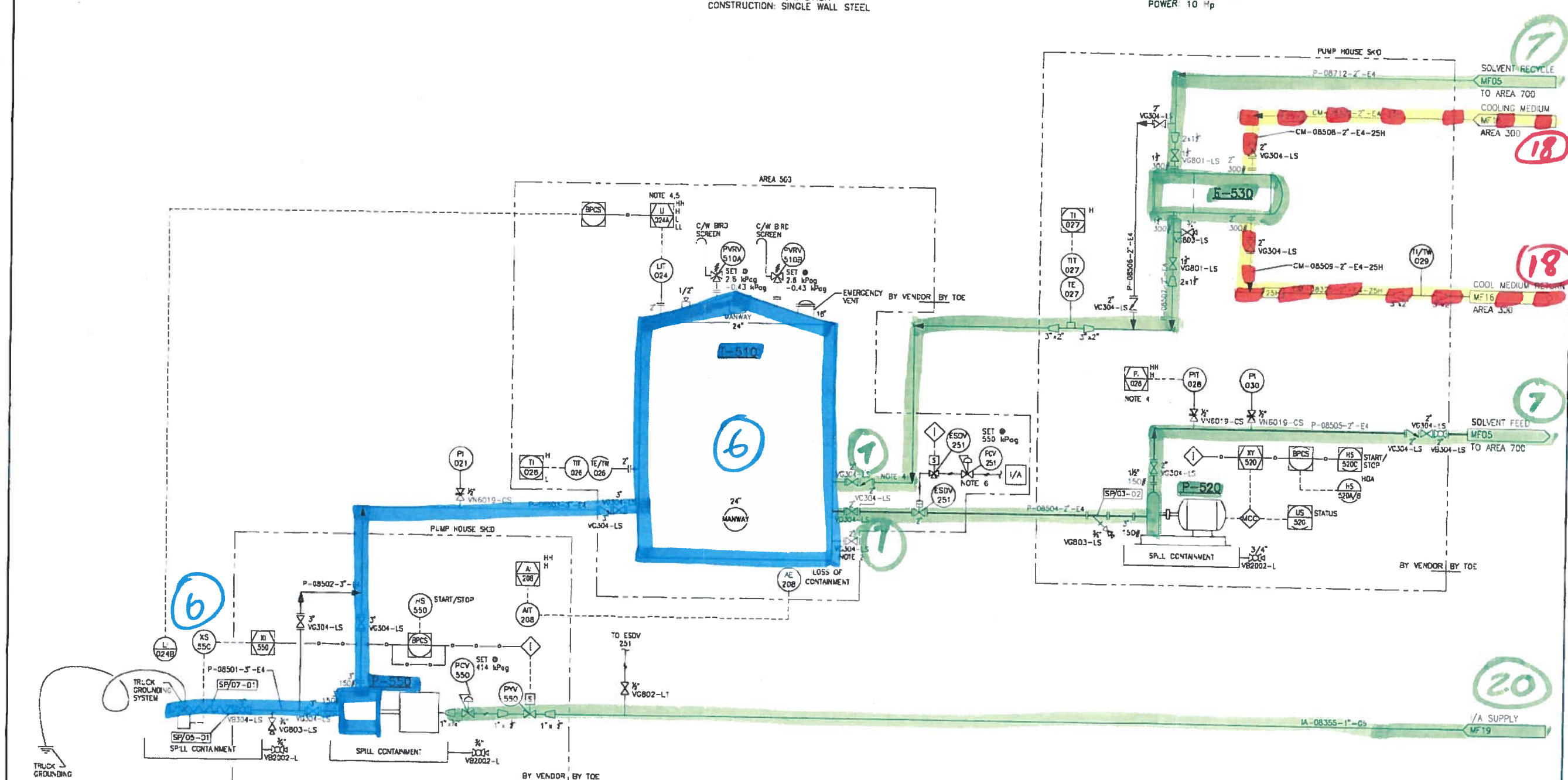


**P-550**  
**SOLVENT TRUCK UNLOADING PUMP**  
 CAPACITY: 600L/min  
 DIFFERENTIAL PRESSURE: 200 kPa(g)  
 POWER: BY AIR

**T-510**  
**SOLVENT STORAGE TANK**  
 SIZE: 4724mm OD x 4877mm H (79.4m<sup>3</sup>) (500b1)  
 DESIGN: ATM  
 INSULATION: 37.5H  
 CONSTRUCTION: SINGLE WALL STEEL

**P-520**  
**SOLVENT RECIRCULATION PUMP**  
 CAPACITY: 200L/min  
 DIFFERENTIAL PRESSURE: 590 kPa  
 POWER: 10 Hp

**E-530**  
**SOLVENT COOLER**  
 REQUIRED DUTY: 71kW



- NOTES:**
1. ALL INSTRUMENTATION WILL BE PREFIXED BY: "500"
  2. CLEAN-OUT.
  3. REFER TO P&ID XX-XX-MF18 AND S/D KEY FOR H.H. SHUT DOWN.
  4. SOLVENT RECYCLE INLET CLOSE TO TANK BOTTOM.
  5. LAH-024 TO SHUT DOWN P-520 LAH-024 TO SHUT DOWN P-550 REFER TO SD KEY.
  6. PVC 251 TO BE SHIPPED LOOSE.

NO.	DATE	ENGR.	CHKD.	DESCRIPTION	ISSUES / REVISIONS
D4	08 APR 07	JRP	ONK	ISSUED FOR DESIGN	
D3	08 FEB 04	GR	EG	ISSUED FOR DESIGN	
D2	08 OCT 24	ROM	JRP	ISSUED FOR DESIGN	
D1	08 MAY 30	FOS	JRP	ISSUED FOR DESIGN	
C1	08 APR 30	FOS	JRP	ISSUED FOR HAZOP	
B1	08 APR 15	FOS	JRP	ISSUED FOR CLIENT REVIEW	
A1	08 APR 10	FOS	JRP	ISSUED FOR INTERNAL REVIEW	

DESIGN/DRFT/ENGR/CHKD	LEAD DISCIPLINE	PROJECT LEAD	PROJECT MANAGER
JRP	JMS	NU	KYN
JRP	JMS	NU	KYN
JRP	DJA	RCU	KYN
JRP	DJA	RCU	KYN
JRP	DJA	RCU	TAM
JRP	DJA	RCU	JTD
JRP	DJA		

PROFESSIONAL STAMP
ASRC ENERGY SERVICES TRI OCEAN ENGINEERING LTD. APEGGA PERMIT P2034

SHELL • TRI OCEAN • FLINT TRI • ALLIANCE			
SHELL CANADA LIMITED COMPLEX ALBERTA			
TITLE FROTH TREATMENT TEST FACILITY AREA 500 SOLVENT TANK AREA PIPING & INSTRUMENTATION DIAGRAM (P&ID)			
OWN. BY	DATE	TOE Dwg. No.	REV.
FGS	2008 MAR 29	08207-0-DG-BC-00004.01	D4
SCALE	ADD. FILE	SH-ELL Dwg. No.	
NTS	00401-DSAO	XX-XX-MF04	