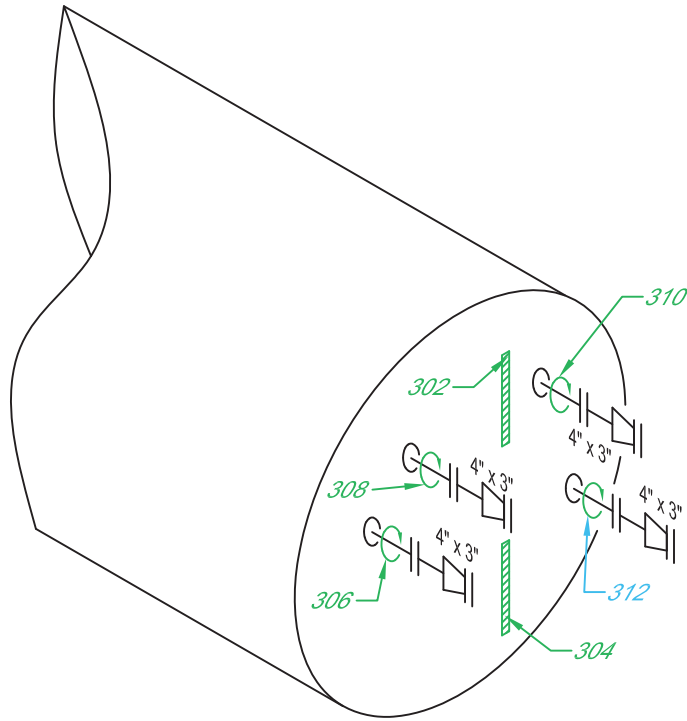




Customer: FUELLED Description: LINE HEATER  
Facility: N/A Location: OVINTIV STORAGE YARD  
Reg A#: 0602876 Serial #: LH-713 Drawing#: 3  
CRN #: P9417.219 Manufacturer: PANAX OIL & GAS Unit #: N/S Year Built: 2011  
Shell MAWP: 22146 kPa Shell MAWT: 93°C Shell Material: N/S Nominal: N/S CA: N/S  
Tube "A" MAWP: \_\_\_\_\_ Tube "A" MAWT: \_\_\_\_\_ Head Material: N/S Nominal: N/S CA: N/S  
Tube "B" MAWP: \_\_\_\_\_ Tube "B" MAWT: \_\_\_\_\_ Tube Material: \_\_\_\_\_ Nominal: \_\_\_\_\_ CA: \_\_\_\_\_  
Size: SEE MFG Manway: NO MDMT: -29°C Boot Shell Mat: \_\_\_\_\_ Nominal: \_\_\_\_\_ CA: \_\_\_\_\_  
Insulated: YES C Stamp: NO RT: 1 PWHT: YES Boot Head Mat: \_\_\_\_\_ Nominal: \_\_\_\_\_ CA: \_\_\_\_\_





**UTS Data Sheet**

Client: **Fuelled**  
 Facility: **n/a**  
 LSD: **Ovintiv Storage Yard**  
 Equip Description: **Line Heater**  
 Reg A #: **0602876**  
 Drawing #: **3**

	Nominal Thickness (mm)	Corrosion Allowance (mm)	Flag Thickness (mm)
<b>302</b> Description: <b>Upper Head Plate</b> Date: Oct. 29, 24 Minimum: 9.5 Average: 9.7 Comments:			8.0
<b>304</b> Description: <b>Lower Head Plate</b> Date: Oct. 29, 24 Minimum: 9.6 Average: 9.7 Comments:			8.1
<b>306</b> Description: <b>Circ on 4" Nozzle</b> Date: Oct. 29, 24 Minimum: 12.4 Average: 12.9 Comments:	13.5		12.0
<b>308</b> Description: <b>Circ on 4" Nozzle</b> Date: Oct. 29, 24 Minimum: 12.7 Average: 13.1 Comments:	13.5		12.0
<b>310</b> Description: <b>Circ on 4" Nozzle</b> Date: Oct. 29, 24 Minimum: 12.4 Average: 12.8 Comments:	13.5		12.0
<b>312</b> Description: <b>Circ on 4" Nozzle</b> Date: Oct. 29, 24 Minimum: 11.9 Average: 12.5 Comments:	13.5		12.0

