



Customer: FUELLED Description: LINE HEATER

Facility: N/A Location: OVINTIV STORAGE YARD

Reg A#: 0583633 Serial #: LH-714 Drawing#: 4

CRN #: P9417.219 Manufacturer: PANAX OIL & GAS Unit #: N/S Year Built: 2011

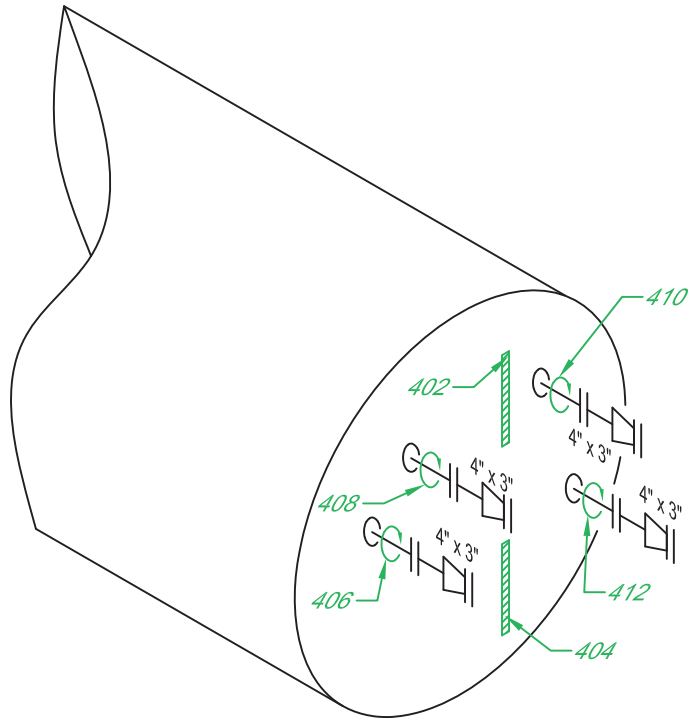
Shell MAWP: 22146 kPa Shell MAWT: 93°C Shell Material: N/S Nominal: N/S CA: N/S

Tube "A" MAWP: _____ Tube "A" MAWT: _____ Head Material: N/S Nominal: N/S CA: N/S

Tube "B" MAWP: _____ Tube "B" MAWT: _____ Tube Material: _____ Nominal: _____ CA: _____

Size: SEE MFG Manway: NO MDMT: -29°C Boot Shell Mat: _____ Nominal: _____ CA: _____

Insulated: YES C Stamp: NO RT: 1 PWHT: YES Boot Head Mat: _____ Nominal: _____ CA: _____





UTS Data Sheet

Client: **Fuelled**
 Facility: **n/a**
 LSD: **Ovintiv Storage Yard**
 Equip Description: **Line Heater**
 Reg A #: **0583633**
 Drawing #: **4**

	Nominal Thickness (mm)	Corrosion Allowance (mm)	Flag Thickness (mm)
402 Description: Upper Head Plate Date: Oct. 29, 24 Minimum: 9.5 Average: 9.6 Comments:			8.0
404 Description: Lower Head Plate Date: Oct. 29, 24 Minimum: 9.4 Average: 9.6 Comments:			7.9
406 Description: Circ on 4" Nozzle Date: Oct. 29, 24 Minimum: 12.5 Average: 13.0 Comments:	13.5		12.0
408 Description: Circ on 4" Nozzle Date: Oct. 29, 24 Minimum: 12.4 Average: 12.9 Comments:	13.5		12.0
410 Description: Circ on 4" Nozzle Date: Oct. 29, 24 Minimum: 12.4 Average: 12.8 Comments:	13.5		12.0
412 Description: Circ on 4" Nozzle Date: Oct. 29, 24 Minimum: 13.0 Average: 13.4 Comments:	13.5		12.0

