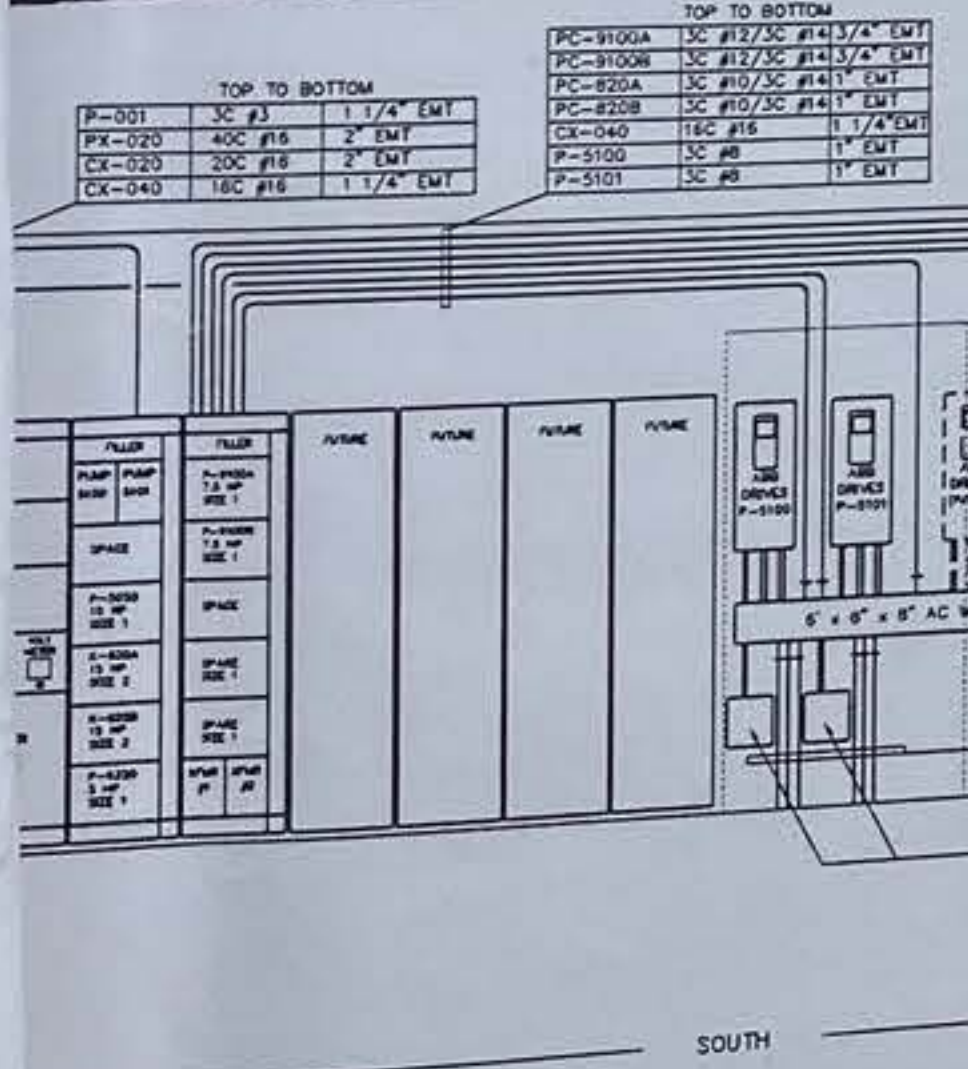
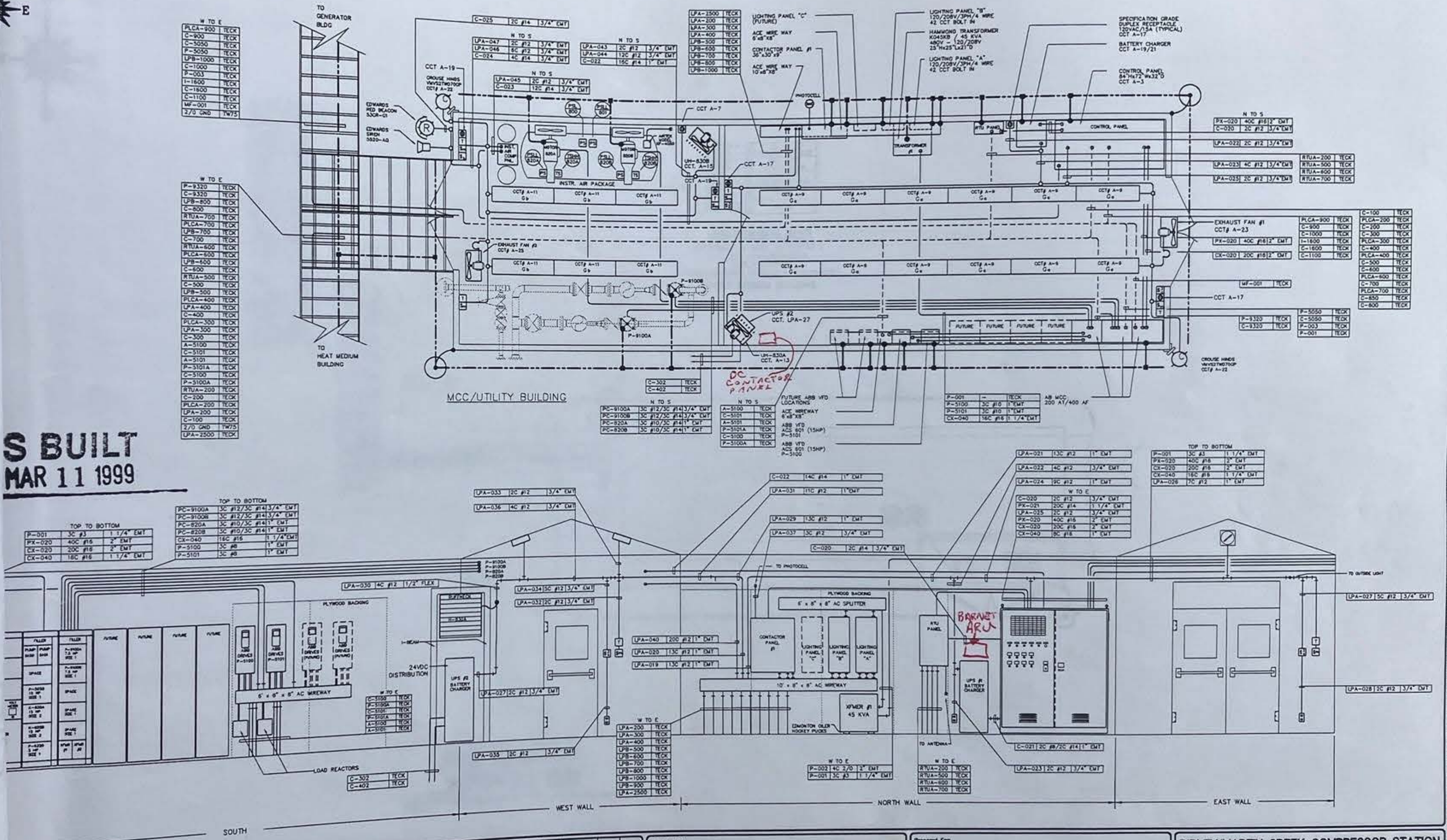




S BUILT
MAR 11 1999



WILL BE LEFT LONG ENOUGH TO TERMINATE IN THE FUTURE. ALL SPARES WILL BE IDENTIFIED NO. THE JUNCTION BOX NO. AND THE NUMBER OF SPARES.
 EQUIPMENT WILL BE MOUNTED ON 3/4\"/>

FIXTURES WILL BE MOUNTED ON UNISTRUT AND SUPPORTED BY P-CLAMPS.
 FIXTURE SPECIFICATION: C & W/FACTORYLUX RS430AA-SAB-148-120VAC C/W COOL WHITE LAMPS AND REFLECTORS.
 FUTURE TO CHOOSE HINDS/CHAMP 70W HPS CAT# HPS-MV421WOTDRP.
 HRES WILL BE TAKEN DOWN FOR TRANSPORTATION AND PROPERLY PACKAGED.
 FLEX AND CONNECTORS FOR TRANSPORTATION.
 ELECTRICAL EQUIPMENT FOR TRANSPORTATION.
 DC PANEL, TRANSFORMER AND BATTERY RACK WILL ALL BE BOLTED TO FLOOR.
 ED EQUIPMENT CONSIST OF THE M.C.C., CONTROL PANEL, BATTERY CHARGER AND BATTERIES, CONTACTOR PANEL, EXHAUST FANS.

No.	Revision	By	Date	Chl	App.
3	AS BUILT	ST	99.03.11		
2	ISSUED FOR C.G. CHOKE SKID ADDITION	GMH	98.01.25		
1	AS BUILT	GMH	97.05.09		
0	ISSUED FOR CONSTRUCTION	GDJ	97.02.18		
0	ISSUED FOR MCC BUILDING CONSTRUCTION	GDJ	97.02.04		
0	ISSUED FOR BIO	GDJ	97.01.31		

Prepared By: **KILOWATTS**
DESIGN COMPANY INC.

Prepared For: **NUMAC**
ENERGY

BIRLEY/MARTIN CREEK COMPRESSOR STATION
MCC/CONTROL ROOM & UTILITY BUILDING LAYOUT

Drawn	Scale	Drawing Number	Rev.
G. JARBEAU	1:30	E-96207-00-11	3

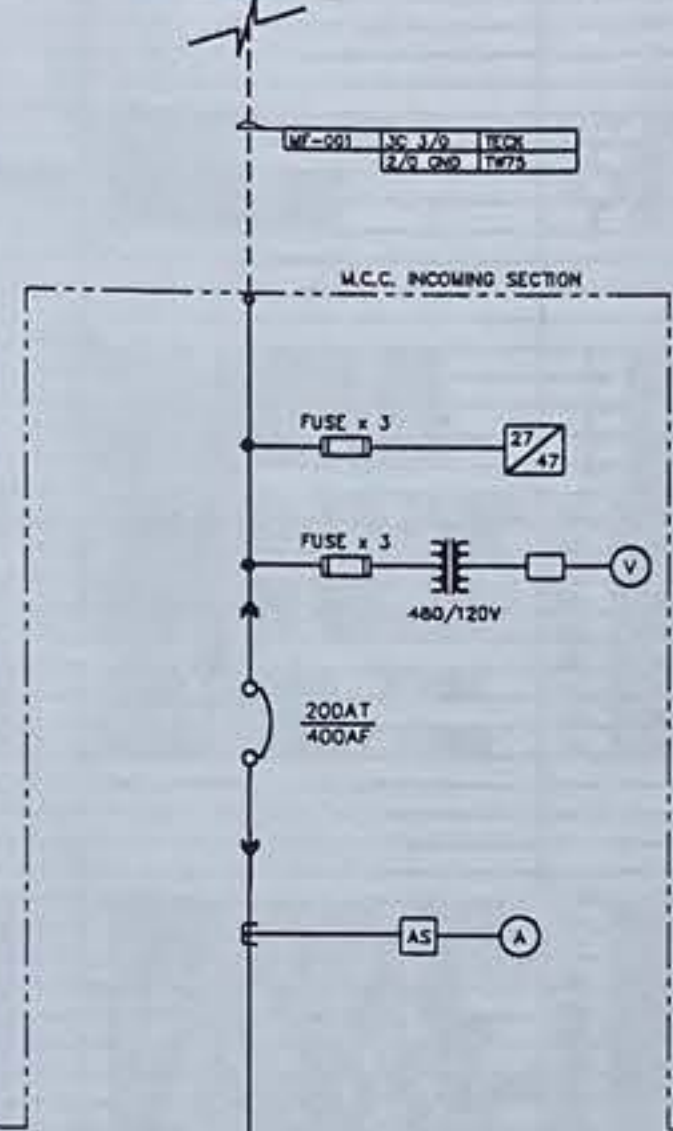
(PLOT DATE) 1999.03.21 © \DATA\1999\Joh\88151\comp\96207-11.dwg

THIS DRAWING AND THE DESIGN IT COVERS ARE CONFIDENTIAL AND THE PROPERTY OF BIRLEY/MARTIN CREEK COMPRESSOR STATION. IT SHALL NOT BE REPRODUCED OR USED FOR ANY PURPOSE WHATSOEVER WITHOUT THE WRITTEN CONSENT OF THE OWNER.

SPACE	FILLER	FILLER
SPACE	PUMP 5100 50A MCP	PUMP 5101 50A MCP
SPACE	SPACE	P-9100A 7.5 HP SIZE 1
SPACE	P-5050 7.5 HP SIZE 1	P-9100B 7.5 HP SIZE 1
AMP METER	K-820A 15 HP SIZE 2	P-9320 5 HP SIZE 1
VOLT METER	SPACE	SPARE SIZE 1
MAIN BREAKER	K-820B 15 HP SIZE 2	SPARE SIZE 1
200 AT 400 AF	SPACE	ONT RM CAMP MCPUR "1" "2"

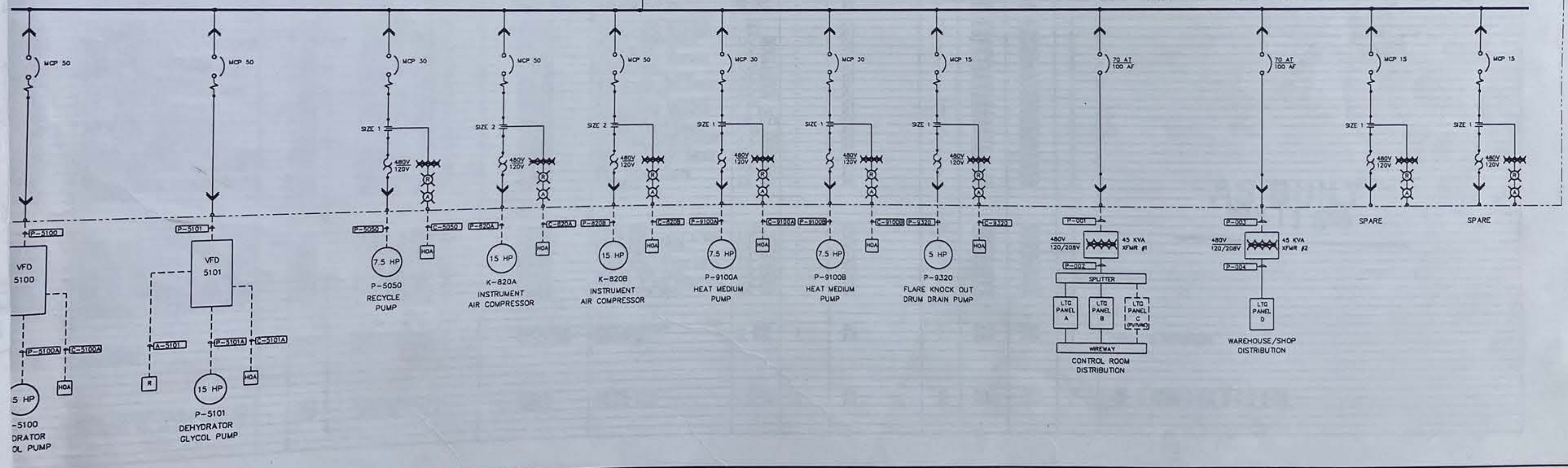
M.C.C.

FROM GENERATOR BLDG



M.C.C.

480V 3 PH 60HZ - 600AMP CU BUS - 42000AMP BRACING - 3 WRE



No.	Revision	By	Date	Chk.	App.
1	AS BUILT	GMH	07.05.08		
0	ISSUED FOR CONSTRUCTION	GDJ	07.02.18		
D	ISSUED FOR MCC BUILDING CONSTRUCTION	GDJ	07.02.04		
C	ISSUED FOR BID	GDJ	07.01.31		
B	ISSUED FOR MCC CONSTRUCTION	GDJ	06.12.18		
A	ISSUED FOR APPROVAL	GDJ	06.11.07		

Prepared By:

Prepared For:

BIRLEY/MARTIN CREEK COMPRESSOR STATION

480V SINGLE LINE DIAGRAM

Drawn	Scale	Drawing Number	Rev.
G.JARBEAU	N.T.S.	E-96207-00-04	1

(PLOT DATE) 1998.01.20

\\DATA\1999\Jobs\88151\Draws\88207-04.dwg



THIS DRAWING AND THE DESIGN IT COVERS ARE CONFIDENTIAL AND THE PROPERTY OF KILOWATTS DESIGN COMPANY INC. AND SHALL NOT BE DISCLOSED TO OTHERS OR REPRODUCED IN ANY MANNER OR USED FOR ANY PURPOSE WHATSOEVER EXCEPT BY THE OWNER.

THE DESIGN IT COVERS ARE CONFIDENTIAL AND THE PROPERTY OF KILOWATTS DESIGN COMPANY INC., AND SHALL NOT BE

BUILDING/EQUIPMENT SCHEDULE

NO.		TAG NO.	SIZE
1	INLET HEADER PACKAGE	-	3658mm x 7010mm
2	INLET SEPARATOR PACKAGE	-	4267mm x 10973mm
3	COMPRESSOR #1	-	7010mm x 11582mm
4	COMPRESSOR #2	-	7010mm x 11582mm
5	DEHYDRATOR	-	4115mm x 9144mm
6	HEAT MEDIUM PACKAGE	-	2438mm x 7925mm
7	MCC PACKAGE	-	12192mm x 3963mm
8	GENERATOR PACKAGE	-	-
9	RECYCLE PUMP PACKAGE	-	-
10	WATER STORAGE TANK	-	400 BBL
11	SLOP TANK	-	400 BBL
12	WATER STORAGE TANK	-	400 BBL
13	WATER STORAGE TANK	-	400 BBL
14	FLARE K.O. DRUM	-	2438mm x 3658mm
15	FLARE STACK	-	273 ϕ x 30480mm
16	CHEMICAL STORAGE TANKS	-	4 x 1000 GAL.
17	BARREL DOCK	-	2438mm x 11680mm
18	WAREHOUSE/SHOP	-	6700mm x 13200mm
19	OFFICE/DORMITORY	-	-
20	STILL VENT DRAIN TANK	-	2000mm O.D. x 3200mm
21	LUBE OIL DRAIN TANK	-	2000mm O.D. x 3200mm
22	SALES METER PACKAGE	-	1829mm x 3048mm
23	FUTURE COMP. #3	-	-
24	FUTURE COMP. #4	-	-
25	FUEL GAS CHOKE SKID	-	2438mm x 7010mm
26	KETTLE TANK	-	-
27	GAS/GAS EXCHANGER	-	4267mm x 10363mm