

- SKID / STEEL NOTES:**
- WELDING SHALL BE IN GENERAL CONFORMANCE WITH CSA W59-2003.
 - WELDS TO BE 1/4" CONTINUOUS FILLET WELD UNLESS NOTED.
 - CHECKER PLATE TO BE STITCH WELDED TO SKID USING 3/16" FILLETS 2" AT 12" INTERVALS.
 - CHECKER PLATE SEAMS TO BE WELDED CONTINUOUSLY ON ONE SIDE.
 - ALL WORK SHALL GENERALLY CONFORM TO THE LATEST EDITIONS OF THE FOLLOWING CODES AND STANDARDS:
 - * CSA W47 1-03
 - * CISC HANDBOOK OF STEEL CONSTRUCTION
 - ALL STEEL SHALL BE OF NEW STOCK AND SHALL BE IN ACCORDANCE WITH CSA G40.21-M.
 - * STRUCTURAL STEEL = GRADE 50W
 - * PLATE MATERIAL = A-36
 - * CHECKER PLATE = A-36
 - FILLER METAL SHALL CONFORM TO CSA STD. W48.5-M. - E4802C6-CH.
 - 2" SPRAY FOAM INSULATION W/TOWERTRON II FIRE RETARDANT COATING ON THE UNDERSIDE
 - WIRE WHEEL CLEAN
 - RUSTEX PRIMER
 - MARINE ENAMEL FINISH
 - FINISH COLOR IS TO BE F-34 WARM GREY

Warwick INDUSTRIES LTD
 8999 84 ST SE, Calgary, Alberta, T2C 4T5
 Telephone (403) 720-5425, Fax (403) 720-9428

Rev. No.	1	DATE	12/27/08	BY	H4
Rev. No.	2	DATE	07/09/09	BY	H4
Rev. No.	3	DATE	07/09/09	BY	H4
Rev. No.	4	DATE	07/09/09	BY	H4
Rev. No.	5	DATE	07/09/09	BY	H4
Rev. No.	6	DATE	07/09/09	BY	H4
Rev. No.	7	DATE	07/09/09	BY	H4
Rev. No.	8	DATE	07/09/09	BY	H4
Rev. No.	9	DATE	07/09/09	BY	H4
Rev. No.	10	DATE	07/09/09	BY	H4
Rev. No.	11	DATE	07/09/09	BY	H4
Rev. No.	12	DATE	07/09/09	BY	H4
Rev. No.	13	DATE	07/09/09	BY	H4
Rev. No.	14	DATE	07/09/09	BY	H4
Rev. No.	15	DATE	07/09/09	BY	H4
Rev. No.	16	DATE	07/09/09	BY	H4
Rev. No.	17	DATE	07/09/09	BY	H4
Rev. No.	18	DATE	07/09/09	BY	H4
Rev. No.	19	DATE	07/09/09	BY	H4
Rev. No.	20	DATE	07/09/09	BY	H4
Rev. No.	21	DATE	07/09/09	BY	H4
Rev. No.	22	DATE	07/09/09	BY	H4
Rev. No.	23	DATE	07/09/09	BY	H4
Rev. No.	24	DATE	07/09/09	BY	H4
Rev. No.	25	DATE	07/09/09	BY	H4
Rev. No.	26	DATE	07/09/09	BY	H4
Rev. No.	27	DATE	07/09/09	BY	H4
Rev. No.	28	DATE	07/09/09	BY	H4
Rev. No.	29	DATE	07/09/09	BY	H4
Rev. No.	30	DATE	07/09/09	BY	H4
Rev. No.	31	DATE	07/09/09	BY	H4
Rev. No.	32	DATE	07/09/09	BY	H4
Rev. No.	33	DATE	07/09/09	BY	H4
Rev. No.	34	DATE	07/09/09	BY	H4
Rev. No.	35	DATE	07/09/09	BY	H4
Rev. No.	36	DATE	07/09/09	BY	H4
Rev. No.	37	DATE	07/09/09	BY	H4
Rev. No.	38	DATE	07/09/09	BY	H4
Rev. No.	39	DATE	07/09/09	BY	H4
Rev. No.	40	DATE	07/09/09	BY	H4
Rev. No.	41	DATE	07/09/09	BY	H4
Rev. No.	42	DATE	07/09/09	BY	H4
Rev. No.	43	DATE	07/09/09	BY	H4
Rev. No.	44	DATE	07/09/09	BY	H4
Rev. No.	45	DATE	07/09/09	BY	H4
Rev. No.	46	DATE	07/09/09	BY	H4
Rev. No.	47	DATE	07/09/09	BY	H4
Rev. No.	48	DATE	07/09/09	BY	H4
Rev. No.	49	DATE	07/09/09	BY	H4
Rev. No.	50	DATE	07/09/09	BY	H4
Rev. No.	51	DATE	07/09/09	BY	H4
Rev. No.	52	DATE	07/09/09	BY	H4
Rev. No.	53	DATE	07/09/09	BY	H4
Rev. No.	54	DATE	07/09/09	BY	H4
Rev. No.	55	DATE	07/09/09	BY	H4
Rev. No.	56	DATE	07/09/09	BY	H4
Rev. No.	57	DATE	07/09/09	BY	H4
Rev. No.	58	DATE	07/09/09	BY	H4
Rev. No.	59	DATE	07/09/09	BY	H4
Rev. No.	60	DATE	07/09/09	BY	H4
Rev. No.	61	DATE	07/09/09	BY	H4
Rev. No.	62	DATE	07/09/09	BY	H4
Rev. No.	63	DATE	07/09/09	BY	H4
Rev. No.	64	DATE	07/09/09	BY	H4
Rev. No.	65	DATE	07/09/09	BY	H4
Rev. No.	66	DATE	07/09/09	BY	H4
Rev. No.	67	DATE	07/09/09	BY	H4
Rev. No.	68	DATE	07/09/09	BY	H4
Rev. No.	69	DATE	07/09/09	BY	H4
Rev. No.	70	DATE	07/09/09	BY	H4
Rev. No.	71	DATE	07/09/09	BY	H4
Rev. No.	72	DATE	07/09/09	BY	H4
Rev. No.	73	DATE	07/09/09	BY	H4
Rev. No.	74	DATE	07/09/09	BY	H4
Rev. No.	75	DATE	07/09/09	BY	H4
Rev. No.	76	DATE	07/09/09	BY	H4
Rev. No.	77	DATE	07/09/09	BY	H4
Rev. No.	78	DATE	07/09/09	BY	H4
Rev. No.	79	DATE	07/09/09	BY	H4
Rev. No.	80	DATE	07/09/09	BY	H4
Rev. No.	81	DATE	07/09/09	BY	H4
Rev. No.	82	DATE	07/09/09	BY	H4
Rev. No.	83	DATE	07/09/09	BY	H4
Rev. No.	84	DATE	07/09/09	BY	H4
Rev. No.	85	DATE	07/09/09	BY	H4
Rev. No.	86	DATE	07/09/09	BY	H4
Rev. No.	87	DATE	07/09/09	BY	H4
Rev. No.	88	DATE	07/09/09	BY	H4
Rev. No.	89	DATE	07/09/09	BY	H4
Rev. No.	90	DATE	07/09/09	BY	H4
Rev. No.	91	DATE	07/09/09	BY	H4
Rev. No.	92	DATE	07/09/09	BY	H4
Rev. No.	93	DATE	07/09/09	BY	H4
Rev. No.	94	DATE	07/09/09	BY	H4
Rev. No.	95	DATE	07/09/09	BY	H4
Rev. No.	96	DATE	07/09/09	BY	H4
Rev. No.	97	DATE	07/09/09	BY	H4
Rev. No.	98	DATE	07/09/09	BY	H4
Rev. No.	99	DATE	07/09/09	BY	H4
Rev. No.	100	DATE	07/09/09	BY	H4

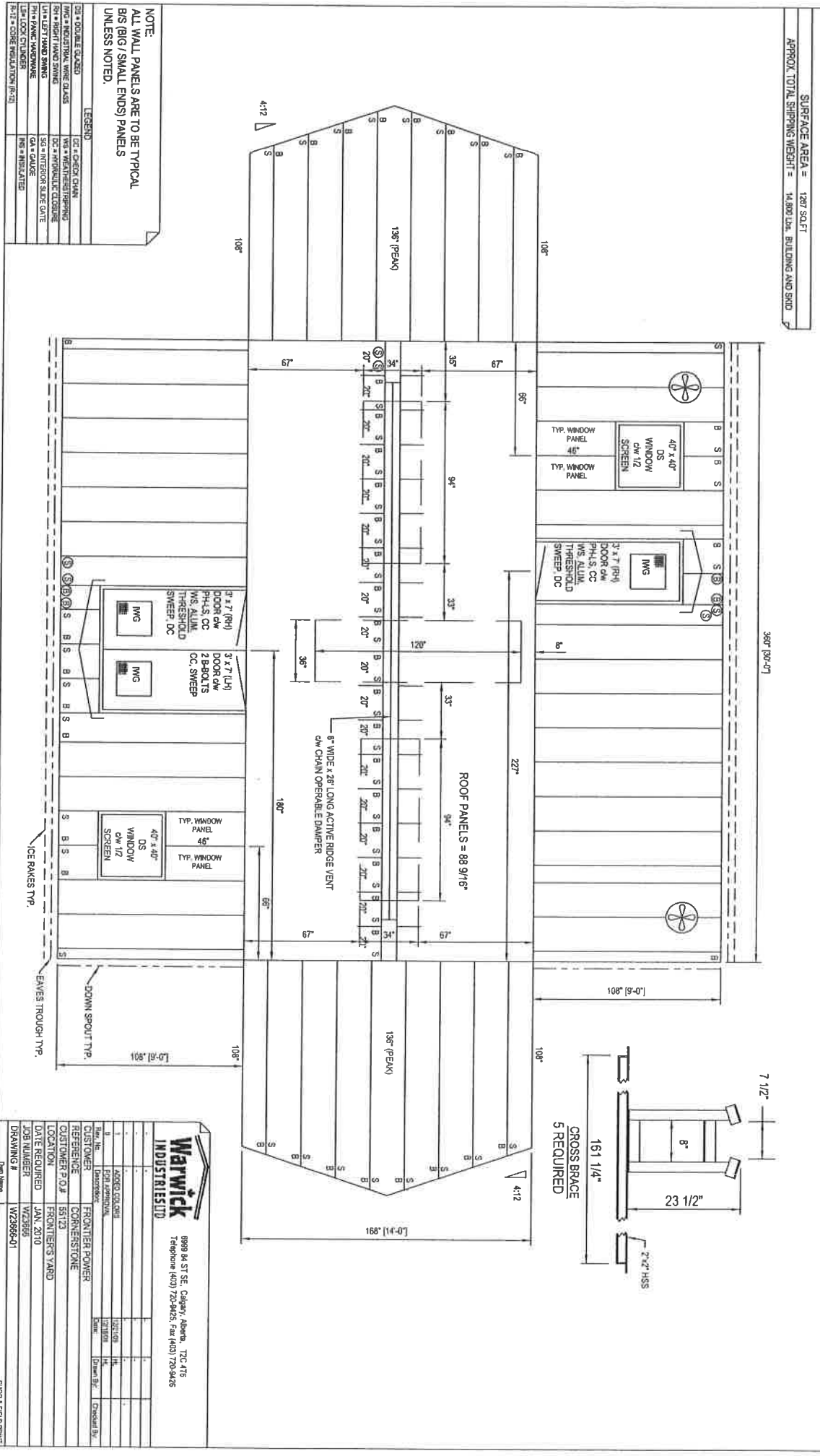
Customer: FRONTIER POWER CORNERSTONE
 Location: FRONTIERS YARD
 Date Required: JAN. 2010
 Job Number: W23886-02
 Drawing #: W23886-02

SKID DRAWING - SHOP & FIELD PRINT

- NOTES:
- EXTERIOR WALLS TO BE: 22 GA GALVALUME
 - EXTERIOR ROOF TO BE: 22 GA GALVALUME
 - DOORS TO BE: 22 GA SWIFT GREEN (COVERABLE #293)
 - DOORS TO BE: 22 GA SWIFT GREEN (COVERABLE #293)
 - ROLLUP DOORS TO BE: 22 GA SWIFT GREEN (COVERABLE #293)
 - INTERIOR LINER TO BE: 24 GA WHITE ALUMINUM
 - INSULATION IN WALLS: R12
 - INSULATION IN ROOF: R20
 - VAPOR BARRIER TO BE: 4 MIL

SURFACE AREA = 1287 SQ.FT.
 APPROX. TOTAL SHIPPING WEIGHT = 14,890 LBS. BUILDING AND SHED

- NOTES:
- INSTALL FOUR 36" x 36" PBX-4LB CONTROL LOUVERS CW STORM HOODS.
 - 2 - 18" GP CANNARI FANS CW 120V, 1PH, 60HZ, STORM HOODS.



NOTE:
 ALL WALL PANELS ARE TO BE TYPICAL
 BIS (BIG / SMALL ENDS) PANELS
 UNLESS NOTED.

LEGEND

DS = DOUBLE GLAZED	DC = CHECK CHAIN
IND = INDUSTRIAL WIRE GLASS	WS = WEATHER STOPPING
RH = RIGHT HAND SWING	CC = ANTI-CURL COILING
LH = LEFT HAND SWING	SA = INTERIOR SLATE GATE
PH = PAVING HARDWARE	GA = GABLE
LS = LOCK CYLINDER	INS = INSULATED
R-12 = CORE INSULATION (R-12)	

Shop & Field Print

1	ADDED LOGO'S	1/2/10	HL	Checked By:
2	LOGO'S	12/10	HL	
3	LOGO'S	12/10	HL	
4	LOGO'S	12/10	HL	
5	LOGO'S	12/10	HL	
6	LOGO'S	12/10	HL	
7	LOGO'S	12/10	HL	
8	LOGO'S	12/10	HL	
9	LOGO'S	12/10	HL	
10	LOGO'S	12/10	HL	
11	LOGO'S	12/10	HL	
12	LOGO'S	12/10	HL	
13	LOGO'S	12/10	HL	
14	LOGO'S	12/10	HL	
15	LOGO'S	12/10	HL	
16	LOGO'S	12/10	HL	
17	LOGO'S	12/10	HL	
18	LOGO'S	12/10	HL	
19	LOGO'S	12/10	HL	
20	LOGO'S	12/10	HL	
21	LOGO'S	12/10	HL	
22	LOGO'S	12/10	HL	
23	LOGO'S	12/10	HL	
24	LOGO'S	12/10	HL	
25	LOGO'S	12/10	HL	
26	LOGO'S	12/10	HL	
27	LOGO'S	12/10	HL	
28	LOGO'S	12/10	HL	
29	LOGO'S	12/10	HL	
30	LOGO'S	12/10	HL	
31	LOGO'S	12/10	HL	
32	LOGO'S	12/10	HL	
33	LOGO'S	12/10	HL	
34	LOGO'S	12/10	HL	
35	LOGO'S	12/10	HL	
36	LOGO'S	12/10	HL	
37	LOGO'S	12/10	HL	
38	LOGO'S	12/10	HL	
39	LOGO'S	12/10	HL	
40	LOGO'S	12/10	HL	
41	LOGO'S	12/10	HL	
42	LOGO'S	12/10	HL	
43	LOGO'S	12/10	HL	
44	LOGO'S	12/10	HL	
45	LOGO'S	12/10	HL	
46	LOGO'S	12/10	HL	
47	LOGO'S	12/10	HL	
48	LOGO'S	12/10	HL	
49	LOGO'S	12/10	HL	
50	LOGO'S	12/10	HL	
51	LOGO'S	12/10	HL	
52	LOGO'S	12/10	HL	
53	LOGO'S	12/10	HL	
54	LOGO'S	12/10	HL	
55	LOGO'S	12/10	HL	
56	LOGO'S	12/10	HL	
57	LOGO'S	12/10	HL	
58	LOGO'S	12/10	HL	
59	LOGO'S	12/10	HL	
60	LOGO'S	12/10	HL	
61	LOGO'S	12/10	HL	
62	LOGO'S	12/10	HL	
63	LOGO'S	12/10	HL	
64	LOGO'S	12/10	HL	
65	LOGO'S	12/10	HL	
66	LOGO'S	12/10	HL	
67	LOGO'S	12/10	HL	
68	LOGO'S	12/10	HL	
69	LOGO'S	12/10	HL	
70	LOGO'S	12/10	HL	
71	LOGO'S	12/10	HL	
72	LOGO'S	12/10	HL	
73	LOGO'S	12/10	HL	
74	LOGO'S	12/10	HL	
75	LOGO'S	12/10	HL	
76	LOGO'S	12/10	HL	
77	LOGO'S	12/10	HL	
78	LOGO'S	12/10	HL	
79	LOGO'S	12/10	HL	
80	LOGO'S	12/10	HL	
81	LOGO'S	12/10	HL	
82	LOGO'S	12/10	HL	
83	LOGO'S	12/10	HL	
84	LOGO'S	12/10	HL	
85	LOGO'S	12/10	HL	
86	LOGO'S	12/10	HL	
87	LOGO'S	12/10	HL	
88	LOGO'S	12/10	HL	
89	LOGO'S	12/10	HL	
90	LOGO'S	12/10	HL	
91	LOGO'S	12/10	HL	
92	LOGO'S	12/10	HL	
93	LOGO'S	12/10	HL	
94	LOGO'S	12/10	HL	
95	LOGO'S	12/10	HL	
96	LOGO'S	12/10	HL	
97	LOGO'S	12/10	HL	
98	LOGO'S	12/10	HL	
99	LOGO'S	12/10	HL	
100	LOGO'S	12/10	HL	

Watwick INDUSTRIES LTD

8999 94 ST SE, Calgary, Alberta, T2C 4T5
 Telephone (403) 720-9425, Fax (403) 720-9426

Customer: FRONTIER POWER CORNERSTONE
 Customer P.O.#: 56171
 Date Required: JAN, 2010
 Job Number: W23895
 Drawing #: W23896-01