

FABRICATION BY:

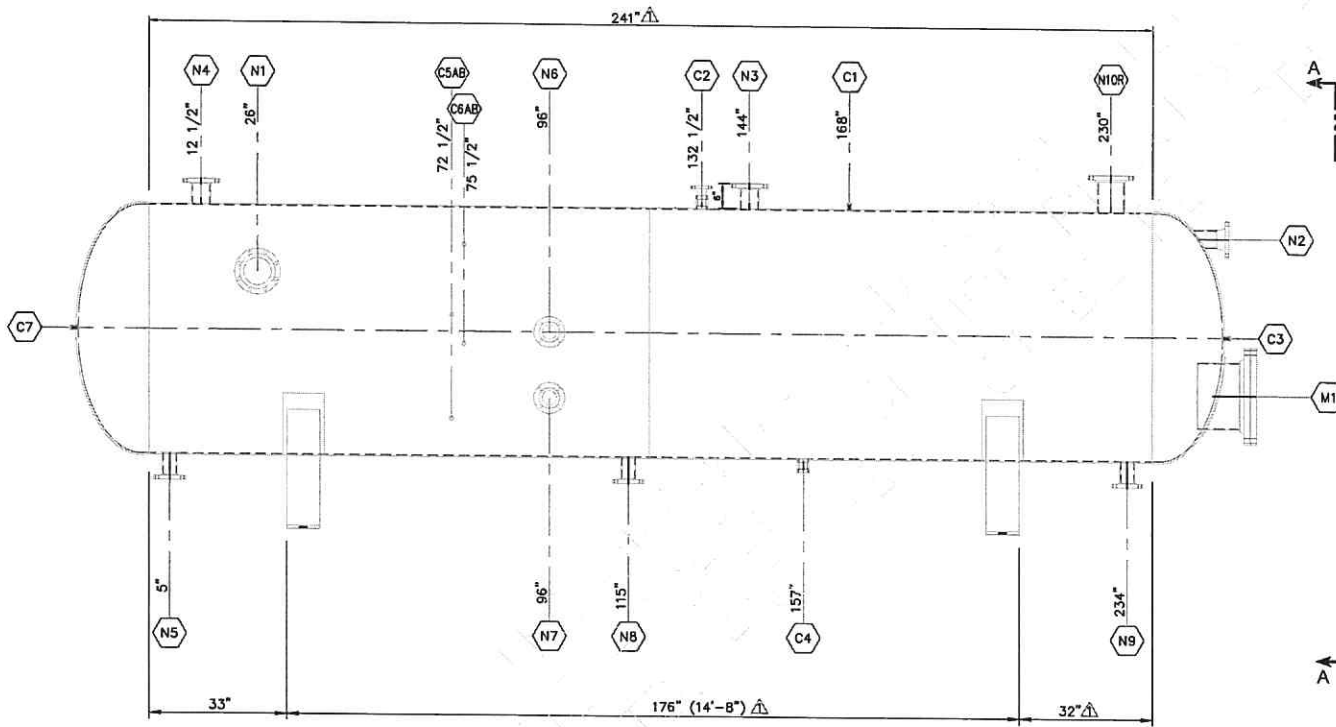
1. QUALITY CONTROL PROGRAM NUMBER: AQP-1460(S)
2. WELDING PROCEDURE REGISTRATION NUMBER: WP-2812.2
3. JOB NUMBER: BHWV-16-04

SECOND REPAIR/ALTERATION NOTES:

- A0409221
 CRN: X0201.2
 S/N: 8040-1
 A. ADD (1) 6" CL150 RFSO (N10R) TO SHELL.
 B. DELETE PWHT REQUIREMENT, "X" OUT "HT" FROM NAME PLATE.

CONNECTION SCHEDULE

MARK	QTY	SIZE	SCH	CLASS & TYPE	SERVICE	PROJECTION		WELD SIZE			WELD DETAIL	BOM ITEM NO.
						INSIDE	OUTSIDE	A	B	C		
N1	1	8"	80	150 RFSO	INLET	-	8 1/2"	-	-	-	-	-
N2	1	4"	STD	150 RFSO	SPARE	-	7"	-	-	-	-	-
N3	1	4"	STD	150 RFSO	SPARE	-	8"	-	-	-	-	-
N4	1	4"	80	150 RFSO	SPARE	-	8"	-	-	-	-	-
N5	1	3"	80	150 RFSO	DRAIN	-	8"	-	-	-	-	-
N6	1	3"	80	150 RFSO	LSH	-	8"	-	-	-	-	-
N7	1	3"	80	150 RFSO	LSL	-	8"	-	-	-	-	-
N8	1	3"	80	150 RFSO	LIQUID OUTLET	-	8"	-	-	-	-	-
N9	1	3"	80	150 RFSO	DRAIN	-	8"	-	-	-	-	-
N10R	1	6"	80	150 RFSO	GAS OUTLET	1/2"	8"	1/2"	-	-	-	1, 2
C1	1	1/2"	-	3000 CPLG	PI	-	SHOWN	-	-	-	-	-
C2	1	2"	-	3000 CPLG	PSV	-	SHOWN	-	-	-	-	-
C3	1	1/2"	-	3000 CPLG	TI	-	SHOWN	-	-	-	-	-
C4	1	2"	-	3000 CPLG	DRAIN	-	SHOWN	-	-	-	-	-
CSAB	2	1/2"	-	3000 CPLG	LEVEL GLASS	-	SHOWN	-	-	-	-	-
CRAB	2	1/2"	-	3000 CPLG	LEVEL GLASS	-	SHOWN	-	-	-	-	-
C7	1	1/2"	-	3000 CPLG	SPARE	-	SHOWN	-	-	-	-	-
M1	1	16"	60	150 RFSO	MANWAY	-	6"	-	-	-	-	-



GENERAL NOTES

1. QUALITY CONTROL PROGRAM NUMBER: AQP-1460(S)
2. WELDING PROCEDURE REGISTRATION NUMBER: WP-2812.2
3. CAPACITY: 425 FT3
4. SERVICE: HYDROCARBONS
5. SURFACE PREPARATION: HAND TOOL CLEAN (MINIMUM)
6. PRIME AND PAINT: AS PER CLIENT SPECIFICATIONS
7. ALL BOLT HOLES TO STRADDLE CENTERLINES.
8. CLEAN AND COVER ALL OPENINGS FOR SHIPMENT.
9. CRN DRAWINGS: CRN: X0201.2
10. ALBERTA REGISTRATION NUMBER: A0409221
11. SERIAL NUMBER: 8040-1

DESIGN NOTES

ORIGINAL DESIGN & FABRICATE TO: ASME SECTION VIII, DIVISION 1, 1975 EDITION
 FIRST ALTERATION DESIGN & FABRICATE TO: ASME SECTION VIII, DIVISION 1, 2010 EDITION ADDENDA 2011a
 SECOND ALTERATION DESIGN & FABRICATE TO: ASME SECTION VIII, DIVISION 1, 2015 EDITION
 MAXIMUM ALLOWABLE WORKING PRESSURE (MAWP): 89 PSIG
 CAPACITY: 425 FT3
 DESIGN TEMPERATURE: 200° F
 MINIMUM DESIGN METAL TEMPERATURE (MDMT): -20° F AT 89 PSIG
 IMPACT TESTS: N/A
 RADIOGRAPHY: FULL (RT-1)
 PWHT: N/A
 HYDROSTATIC TEST PRESSURE: 116 PSIG
 CORROSION ALLOWANCE: N/A
 WEIGHT EMPTY: 6,500 LBS
 WEIGHT FULL OF WATER: 33,000 LBS

STANDARD TOLERANCES	
FABRICATION:	
GENERAL DEVIATION:	± 1/8"
OVERALL LENGTH:	± 1/4"
ANGULAR:	± 1°
WELD PREPARATION:	
LAND:	1/16" ± 1/32"
ROOT GAP:	1/8" ± 1/16"
ANGULAR:	± 15°

1	17-01-13	RE-ISSUED FOR CONSTRUCTION	LDG				
0	16-11-22	ISSUED FOR CONSTRUCTION	LDG				
B	16-11-17	RE-ISSUED FOR APPROVAL	LDG				
A	16-10-25	ISSUED FOR APPROVAL	LDG				
NO.	DATE	REVISION	BY	APP			

CLIENT:	STOCK
DATE:	16-10-23
BDD NO.:	
JOB NO.:	CES-488
SCALE:	NTS
DRAWN BY:	LDG
CHECKED BY:	KC
FIELD:	

60" x 20'-0" FKOD	
89 PSIG @ 200° F	
VESSEL DETAIL	
DWG NO.:	CES-488V-1
REV.	1