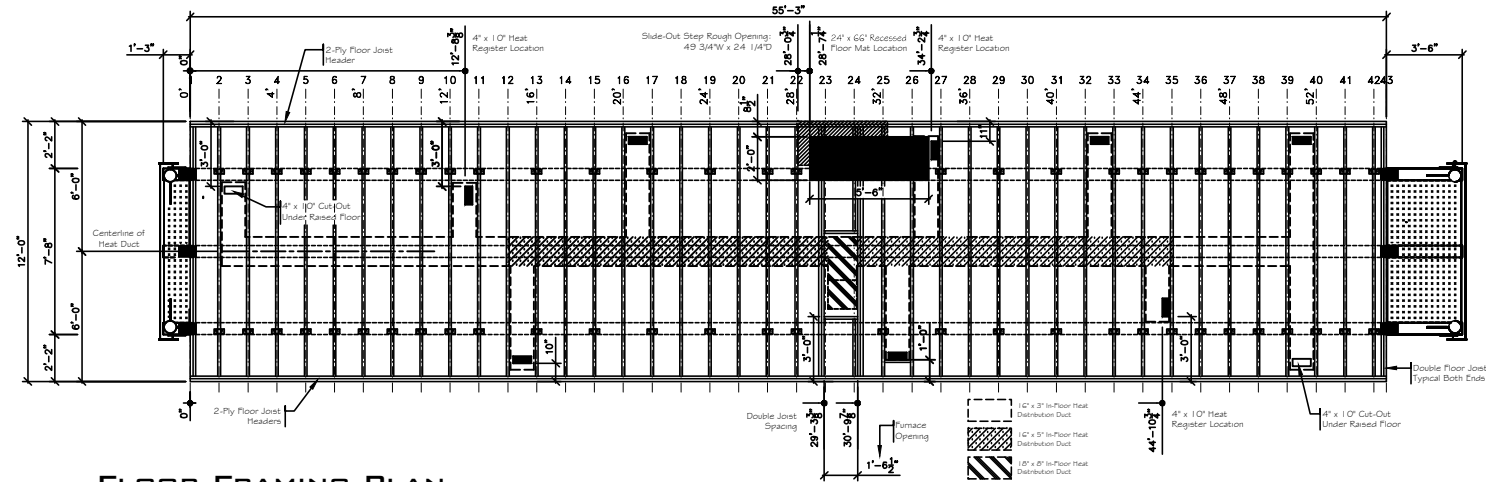
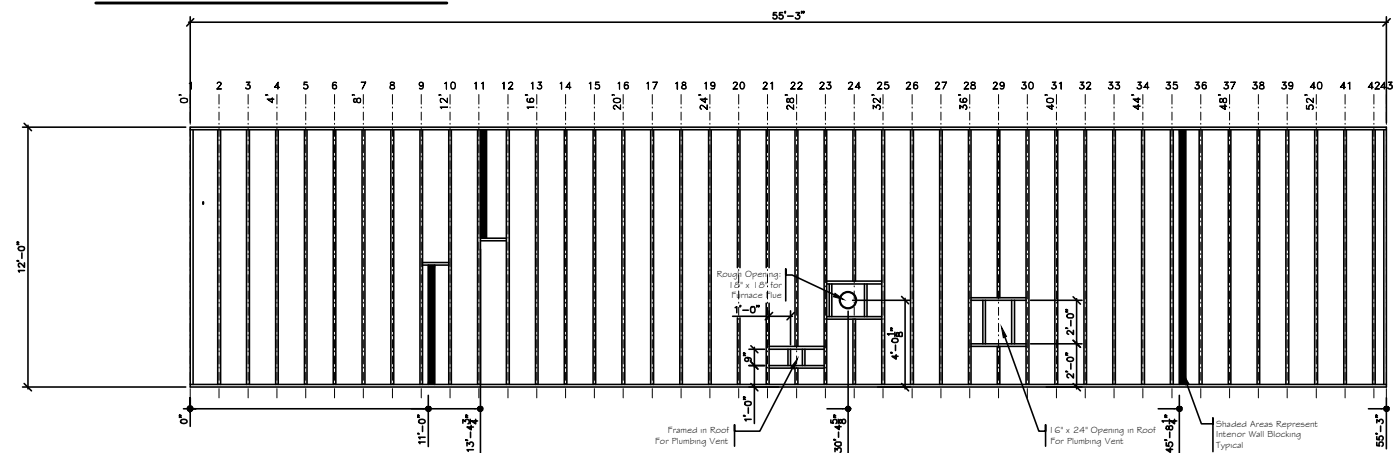


SKID PLAN

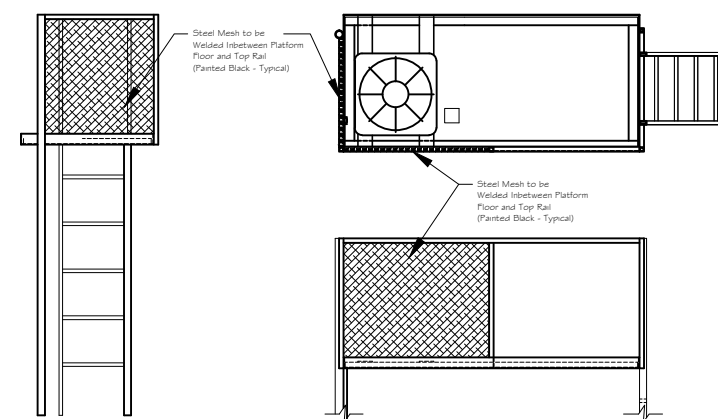


FLOOR FRAMING PLAN



ROOF FRAMING PLAN

SKID LEGEND	
Beam Size	W12 @ 30 lb./ft.
# of Beams	Three (3)
End Members	7/8" x 97" Long
Cross Members	5 1/2" x 42 1/2" Long
Bumper Posts	4 - 7/8" x 48" High
Painting	1 Coat Black
Checker Plate	3/16" Steel
Front End	32"W x 92"L
Back End	14"W x 92"L
Bolting	1/2" / 3/4" o.c. (See "Floor Plan")
"Z" Clamps	6 - 5/16" x 10"H



A/C PROTECTION DETAIL

Scale : 1/2" = 1'-0"

Copyrighted Material: No reproduction of any kind of this document and attachments hereto unless with the written consent from Alta-Fab Structures Ltd. ©2000 Alta-Fab Structures Ltd.

REVISIONS

Rev.	Date	Description	By	App.
1	Jan. 22/01	Revised Eng. Vantty # Eng. Desktop	KJK	
2	Oct. 27/00	Revised Geo. Door Size	KJK	
3	Sept. 14/00	Custom Client Revisions	KJK	
4	July 27/00	Geo. Lab Change / General Changes	KJK	



504 - 13th Avenue, Nisku
Alberta, Canada
Telephone: (780) 955-7733
Fax: (780) 955-7851
Toll Free: 1-800-252-7990

This Drawing is the Sole Property of Alta-Fab Structures Ltd. (Nisku, Alberta, Canada) and is loaned subject to return upon demand. This Drawing is to be only used for the intended project, and it is not to be reproduced or used in whole or in part for manufacturing purposes or otherwise without written consent or used for any purpose directly or indirectly detrimental to our interest.

Client:	Sundance Rentals		
Engineering Firm:	N/A		
Site:	N/A		
Legal Site Description:	N/A		
Model:	12' x 56' (skid) Wellsite "Millennium"		
Drawn:	K. Kramers, A.S.C.T.	Checked:	V.G.
Scale:	1/4" = 1'-0"	Approved:	
AFS Serial Number:	011256-S-	Department:	2
	3671		4
	3672 -WSM-S		

Date: May 17, 2000

CAD: 011256-S-3671-S