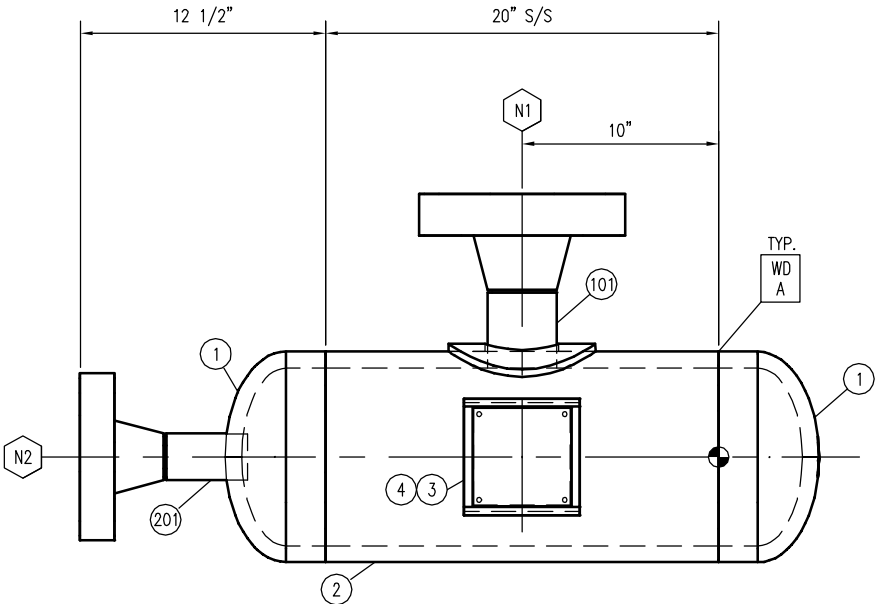
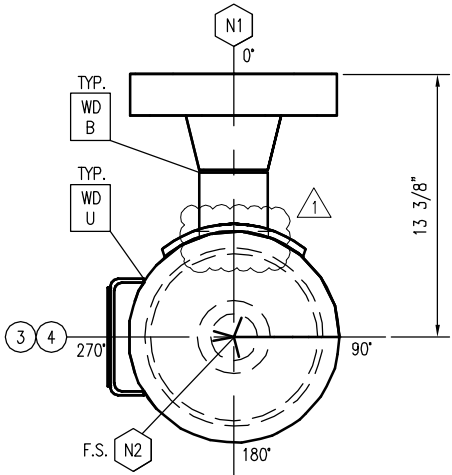


| BILL OF MATERIALS | | | | | | | | | |
|-------------------|-----|-----------------------|-----|--|--------------------|----------------|---------------------|---------------------|-------------|
| MARK | TAG | SERVICE | QTY | DESCRIPTION | LENGTH (INCHES) | WELD DETAIL | OS PROJ (INCHES) | IS PROJ (INCHES) | HEAT NUMBER |
| | 1 | | 2 | HEAD, 10 3/4"OD, 7/8" NOM, (0.75" MIN), 2:1 ELLIP, 2" SF,SA-516-70N | | | | | |
| | 2 | | 1 | PIPE, 10",S/120,SMLS,SA-106-B | 20" | | | | |
| | 3 | | 1 | SPECIFICATION PLATE, SS | | | | | |
| | 4 | | 1 | NAME PLATE BRACKET, 1/4" THK,SA-516-70N | | | | | |
| N1 | 100 | INLET/INSP. /DRAIN | 1 | FLANGE,3",1500#,RF,WN,S/(XXS),SA-105 | | | AS SHOWN | | |
| | 101 | | 1 | PIPE,3",S/(XXS),SMLS,SA-106-B | 4 3/8" | D | | CON | |
| | 102 | | 1 | REPAD,7.50" OD,3.75" ID,3/8"THK,FORMED TO 10.75" OD SHELL,SA-516-70N | | | | | |
| N2 | 200 | OUTLET /INSP. | 1 | FLANGE,2",900#,RF,WN,S/(XXS),SA-105 | | | AS SHOWN | | |
| | 201 | | 1 | PIPE,2",S/(XXS),SMLS,SA-106-B | 4 1/8" | C | | STR | |



ELEVATION VIEW



RIGHT END VIEW

GENERAL NOTES:

- ALL TAIL DIMENSIONS FROM REFERENCE POINT.
- WELDING PROCEDURE REGISTRATION No. WP 496.2
- FLANGE BOLT HOLES TO STRADDLE MAJOR CENTERLINES OF VESSEL, UNLESS OTHERWISE NOTED.
- ALL FLANGES TO BE ANSI 16.5, ALL FORGED THD & SW FITTINGS PER ANSI B16.11, UNLESS OTHERWISE NOTED.
- EXTERIOR & INTERIOR OF VESSEL TO BE FREE OF WELD SLAG, SPATTER, GREASE, MOISTURE, ETC.
- ALL CUT LENGTHS ARE FINISHED LENGTHS, PIPING CUT LENGTHS ARE BASED ON 1/8" (3 mm) WELD GAP.
- PROJECT NAME PLATE 1" (25 mm) FROM SHELL/INSUL.
- ALL DIMENSIONS TO BE HELD TO ±1/8" (3.2mm) UNLESS OTHERWISE SHOWN.
- ALL TACK WELDS TO BE PER WP 1, 2 & 5.
- SURFACE PREPARATION:
EXTERNAL: ENERFLEX STANDARD.
INTERNAL: MECHANICAL CLEAN SSPC-SP3
- PRIMER: ENERFLEX STANDARD
- FINISH: ENERFLEX STANDARD
- INSULATION: NONE
- ALL REPAD AND POISON PAD SHALL HAVE A 1/4" THREADED WEEP HOLE
- ALLOWABLE MATERIALS SUBSTITUTION:
SA-333-6 FOR SA-106-B;
SA-350-LF2-CL1 FOR SA-105N;
SA-420-WPL6 FOR SA-234-WPB.
SA-105N FOR SA-105
SA-516-70N FOR SA-516-70
SEAMLESS FOR WELDED PIPE
- TAPERED TRANSITION PER UW-9(c) IF REQUIRED.
- EXPOSED INSIDE EDGES SHALL BE CHAMFERED OR ROUNDED AS PER UG-76(c).
- 1/4" CONTINUOUS FILLET WELD ALL CONTACTING PLATE EDGES FOR INTERNAL/EXTERNAL UNLESS OTHER WISE NOTED.
- WHEN USING ONE PIECE REPAD IS NOT PRACTICAL, THE FOLLOWING SHALL BE PERFORMED:
A. ON SHELL: THE SPLIT WELD SHALL BE ORIENTED AT LEASE 45 DEGREE FROM THE LONGITUDINAL AXIS OF THE VESSEL.
B. ON HEAD: THE SPLIT WELD SHALL BE 100% RT OR UT.
C. USE WELD DETAIL "A" FOR SPLIT REPAD.
- MINIMUM HYDRO VESSEL TEMP SHALL BE 30°F ABOVE MDMT BUT NOT LOWER THAN 35°F
- VESSEL INTERNALS TO BE OILED AFTER HYDRO TESTING.
- NATIONAL BOARD REGISTRATION IS REQUIRED.

U

W

RT2

-

MAWP

MAEWP

MDMT

SN

CRN

SH.THK

HD.THK

1932

-

-20

426374220

-

0.844

0.75

PSI

PSI

*F

*F

IN

IN

350

-

1932

2013

0.125

SA-106B

SA-516-70N

*F

*F

PSI

IN

MAT'L

MAT'L

CERTIFIED BY:

ENERFLEX

ENERGY SYSTEMS

Wyoming Inc.

2289 Renauna Ave Casper, Wyo. 82601

ASME

A

| DESIGN AND FABRICATION TO BE IN ACCORDANCE WITH THE NB REGULATIONS AND A.S.M.E. CODE SEC. VIII DIV. 1 2010 EDITION, 2011a ADDENDA | | | |
|---|------------------------------|------|-----|
| DESIGN PRESSURE | 1932 PSIG | | |
| DESIGN TEMPERATURE | 350 DEG°F | | |
| MIN DESIGN METAL TEMP | -20°F @ 1932 PSIG | | |
| MAX. ALLOWABLE WORKING PRESS. | 1932 PSIG | | |
| LIMITED BY | FLANGE RATING | | |
| CORROSION ALLOWANCE | 0.125 | | |
| POST WELD HEAT TREATMENT | NO | | |
| SERVICE | NATURAL GAS | | |
| VOLUME | 1.046 FT3 | | |
| WT. EMPTY (SHIPPING WT.) | 366 LBS | | |
| WT. FULL OF WATER (TEST WT.) | - LBS | | |
| OPERATING WEIGHT | - LBS | | |
| HYDROSTATIC TEST PRESS. | 2898 PSIG | | |
| IMPACT TEST EXEMPT PER | UG-20(f), UCS-66(c) | | |
| RADIOGRAPHY: | RT2 | | |
| PART | CODE | TYPE | JE |
| SHELL (CAT 'A') | UW-11(a)5/UW-12(d) | NONE | 1 |
| HEAD TO SHELL (CAT 'B') | UW-11(a)5b/UW-12(d)/UW-12(c) | SPOT | 0.7 |

ISSUED FOR CONSTRUCTION

NAME J. BILLINGS DATE MAY 16/13

| | | | | | | | | | |
|-----|-----------------------------|-----------|----|-----|---|-------------------|---------------|------------------|---------|
| - | - | - | - | - | - | DATE | MARCH 25/13 | SCALE | NTS |
| - | - | - | - | - | - | DRAWN BY | J. BILLINGS | CHECKED BY | R. LARA |
| - | - | - | - | - | - | PROJECT MANAGER | B. LANGER | PROJECT ENGINEER | A. YUEN |
| OA | CONTOURED PIPE FOR N1 | MAY 23/13 | JB | RL | | CUST PO | N/A | | |
| 0 | ISSUED FOR CONSTRUCTION | MAY 21/13 | JB | RL | | | | | |
| A | ISSUED FOR ACOUSTICAL STUDY | MAY 01/13 | JB | RL | | | | | |
| REV | DESCRIPTION | DATE | BY | APR | | APEGGA PERMIT No: | APEGGA_PERMIT | OPER. CODE | 220 |

ENERFLEX LTD.
RENTAL

ENERFLEX

Calgary, Alberta,
Canada

V220
DISCHARGE BOTTLE
10 3/4" OD X 20" S/S

DWG NO

42637-4220

SHT

1 OF 1

REV

OA