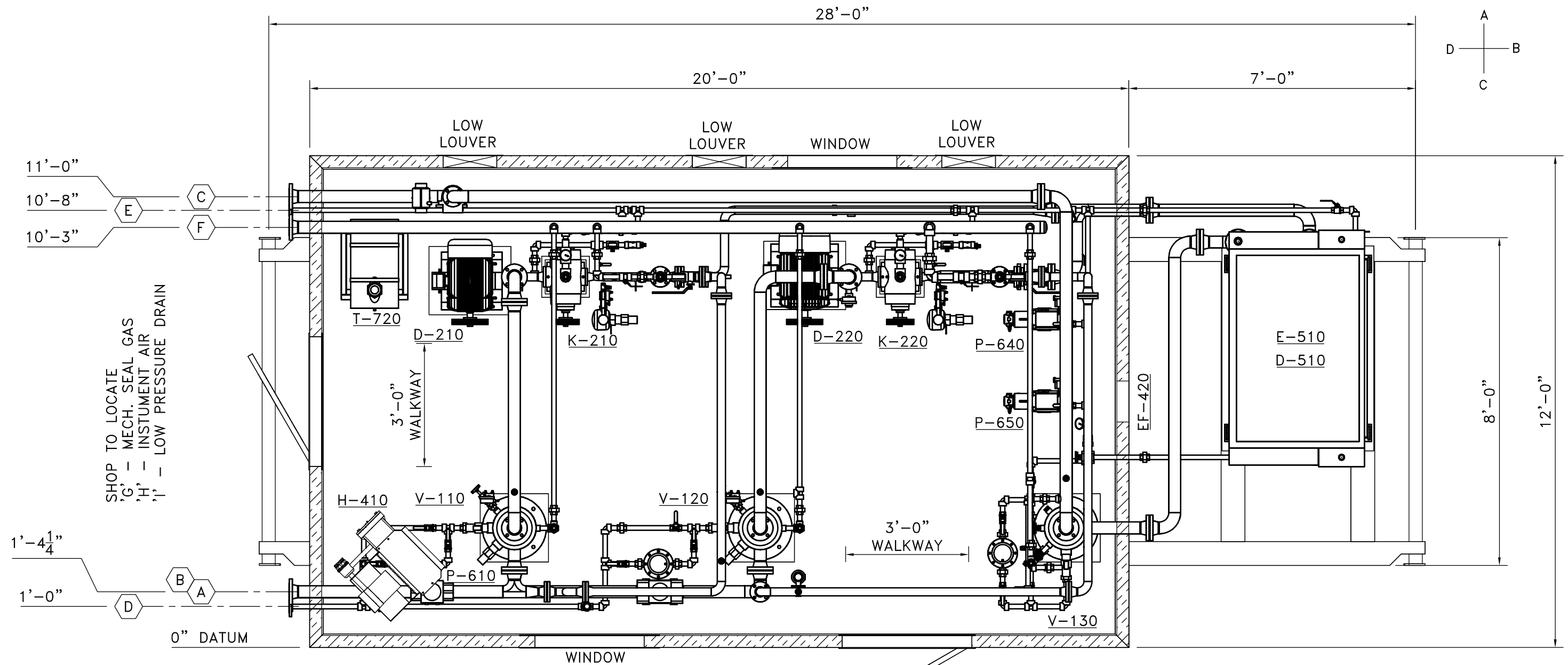


C:\Users\broing\Desktop\E-3A-RF13018 Rev A.dwg, 07/10/13 4:30:39 PM, broing, Property of PC Compression Inc. Duplication or Transmission without Permission is Prohibited.



PLAN VIEW

SHIPPING INFO.	EST. DIM'S: 29'-0" Lx 13'-0" Wx 14'-6" H
	EST. PKG. WEIGHT: 32,500 lbs

CUSTOMER CONNECTIONS				
ITEM	DESCRIPTION	SIZE	ELEVATION	PROJ.
A	VRU GAS INLET	3"-150# ANSI RF	52 3/4" FTOS	6"
B	BOOSTER GAS INLET	3"-150# ANSI RF	39" FTOS	6"
C	GAS OUTLET	3"-150# ANSI RF	18" FTOS	6"
D	INLET VESSEL DRAIN	2"-150# ANSI RF	5 3/4" FTOS	6"
E	OUTLET VESSEL DRAIN	2"-150# ANSI RF	5 3/4" FTOS	6"
F	FLARE HEADER	3"-150# ANSI RF	96 1/4" FTOS	6"
G	MECH. SEAL GAS	1" NPT	SHOP FIT	6"
H	INSTRUMENT AIR	1" NPT	SHOP FIT	6"
I	LOW PRESSURE DRAIN	1/2" TUBE	SHOP FIT	6"

CONNECTION NOTE:
 - THESE CONNECTIONS ARE PREASSEMBLY. THEY ARE TO BE USED FOR REFERENCE ONLY.

REV.	DESCRIPTION	BY	DATE	CHKD	APPD
A	ISSUED FOR APPROVAL	GDB	07-10-13		

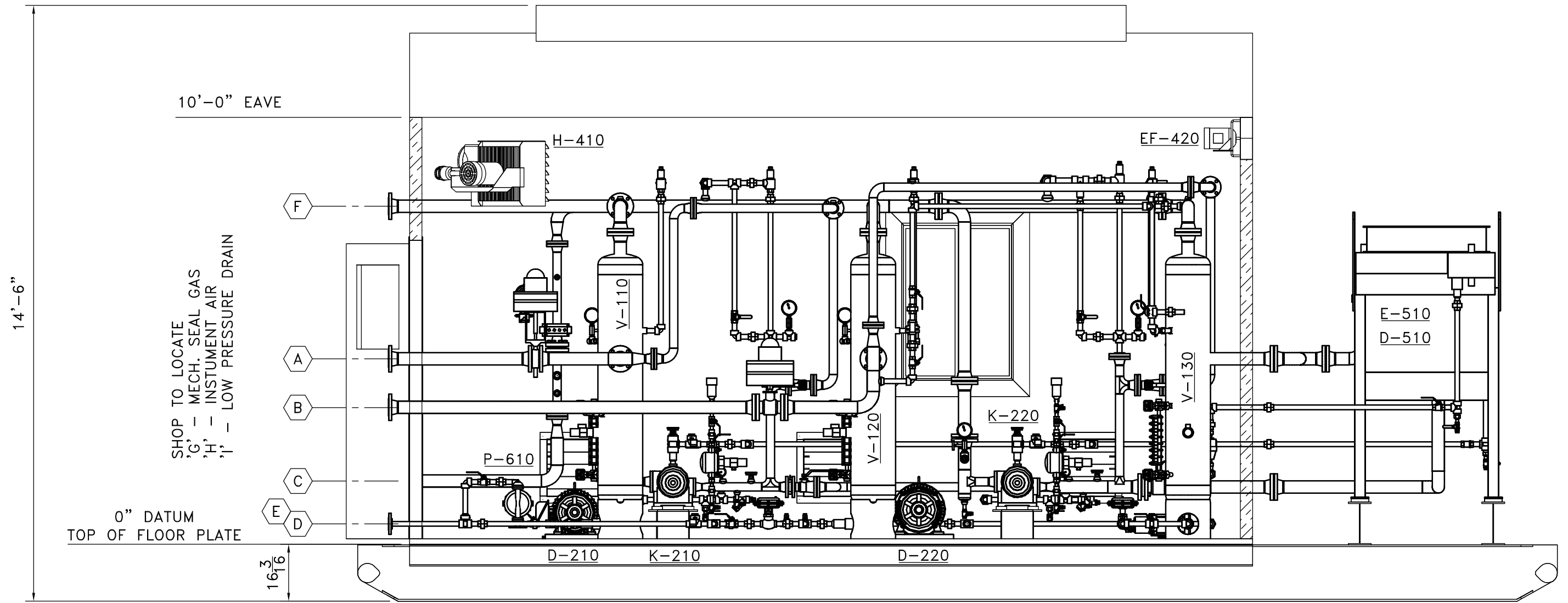
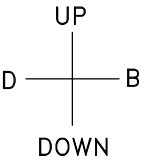


607-15th Ave.
 Nisku Alberta
 T9E 2M6
 Office: 780.955.4292
 Fax: 780.955.4294
 Toll Free: 866.955.4292

Drawn by:	GDB				
Date:	JUL 09/13				
Checked by:					
Approved by:	Company: TUNDRA OIL AND GAS PARTNERSHIP				
Scale:	Quote/Ref. NO.:	JOB NO.:	Unit NO.:	Drawing NO.:	Rev.:
1:30	Q-13019 R1	PC-512	RF-13018	GA-RF13018-B-01	A

AFE# 02013255FC
 LSD: 01-18-03-28 W1M

20HP VRU & 30HP BOOSTER PACKAGE
 RO-FLO 5CC w/ 20HP & RO-FLO 5CC w/ 30HP
 SOUR NAUTAL GAS SERVICE



SHOP TO LOCATE
'G' - MECH. SEAL GAS
'H' - INSTUMENT AIR
'I' - LOW PRESSURE DRAIN

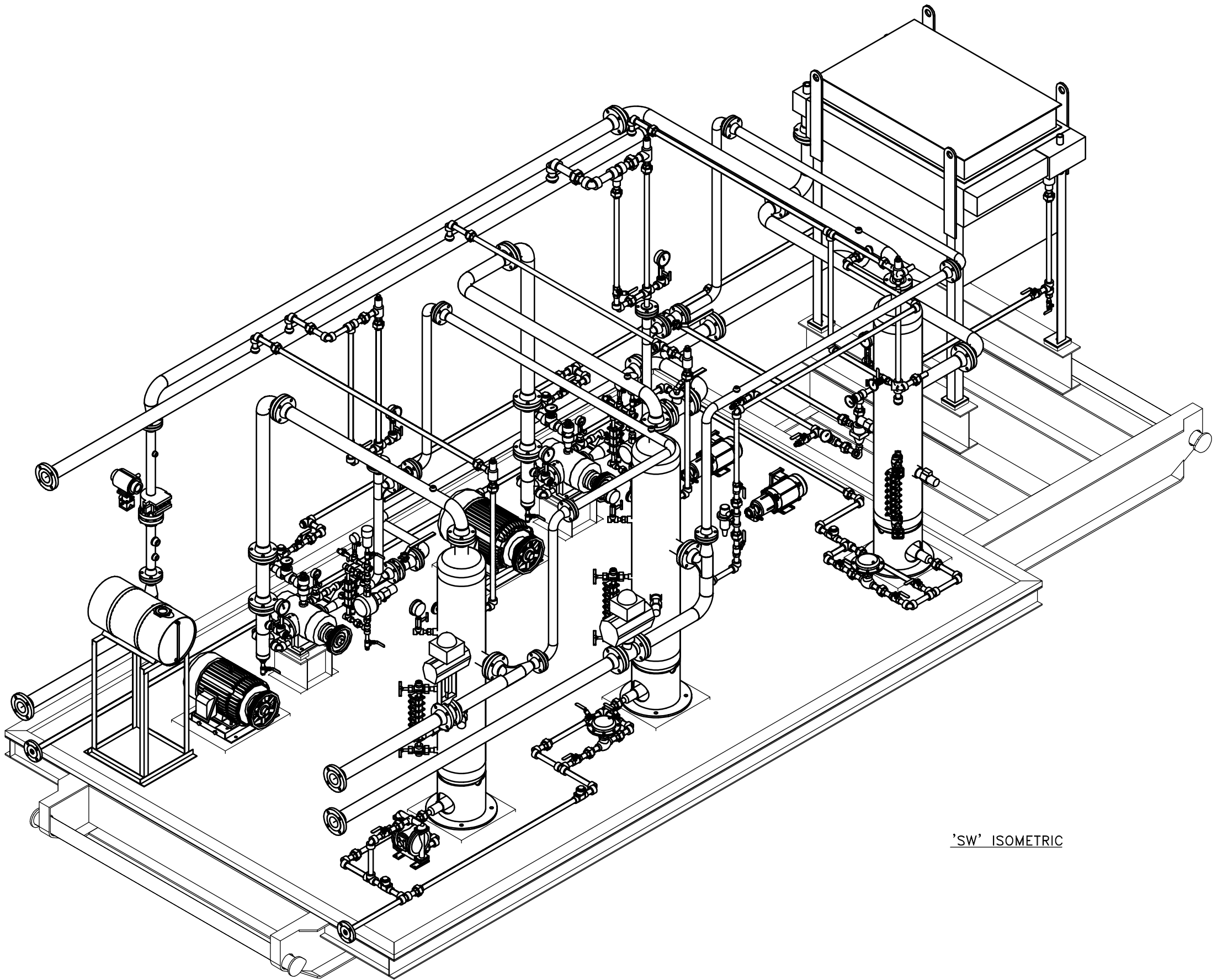
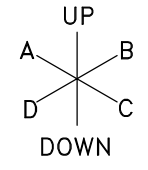
SIDE VIEW

AFE# 02013255FC
LSD: 01-18-03-28 W1M

						Drawn by: GDB Date: JUL 09/13 Checked by:		20HP VRU & 30HP BOOSTER PACKAGE RO-FLO 5CC w/ 20HP & RO-FLO 5CC w/ 30HP SOUR NAUTAL GAS SERVICE			
						Approved by:		Company: TUNDRA OIL AND GAS PARTNERSHIP			
607-15th Ave. Nisku Alberta T9E 2M6				Office: 780.955.4292 Fax: 780.955.4294 Toll Free: 866.955.4292		Scale: 1:30	Quote/Ref. NO.: Q-13019 R1	JOB NO.: PC-512	Unit NO.: RF-13018	Drawing NO.: GA-RF13018-B-02	Rev.: A
A	ISSUED FOR APPROVAL	GDB	07-10-13	BY	DATE	CHKD	APPD				
REV.	DESCRIPTION										


C:\Users\browning\Desktop\E-GA-RF13018 Rev A.dwg, 07/10/13 4:30:56 PM, Drawing, Property of PC Compressor Inc. Duplication or Transmission without Permission is Prohibited.

C:\Users\browning\Desktop\E-3A-RF13018 Rev A.dwg, 07/10/13 4:31:18 PM, drawing, Property of PC Compression Inc. Duplication or Transmission without Permission is Prohibited.

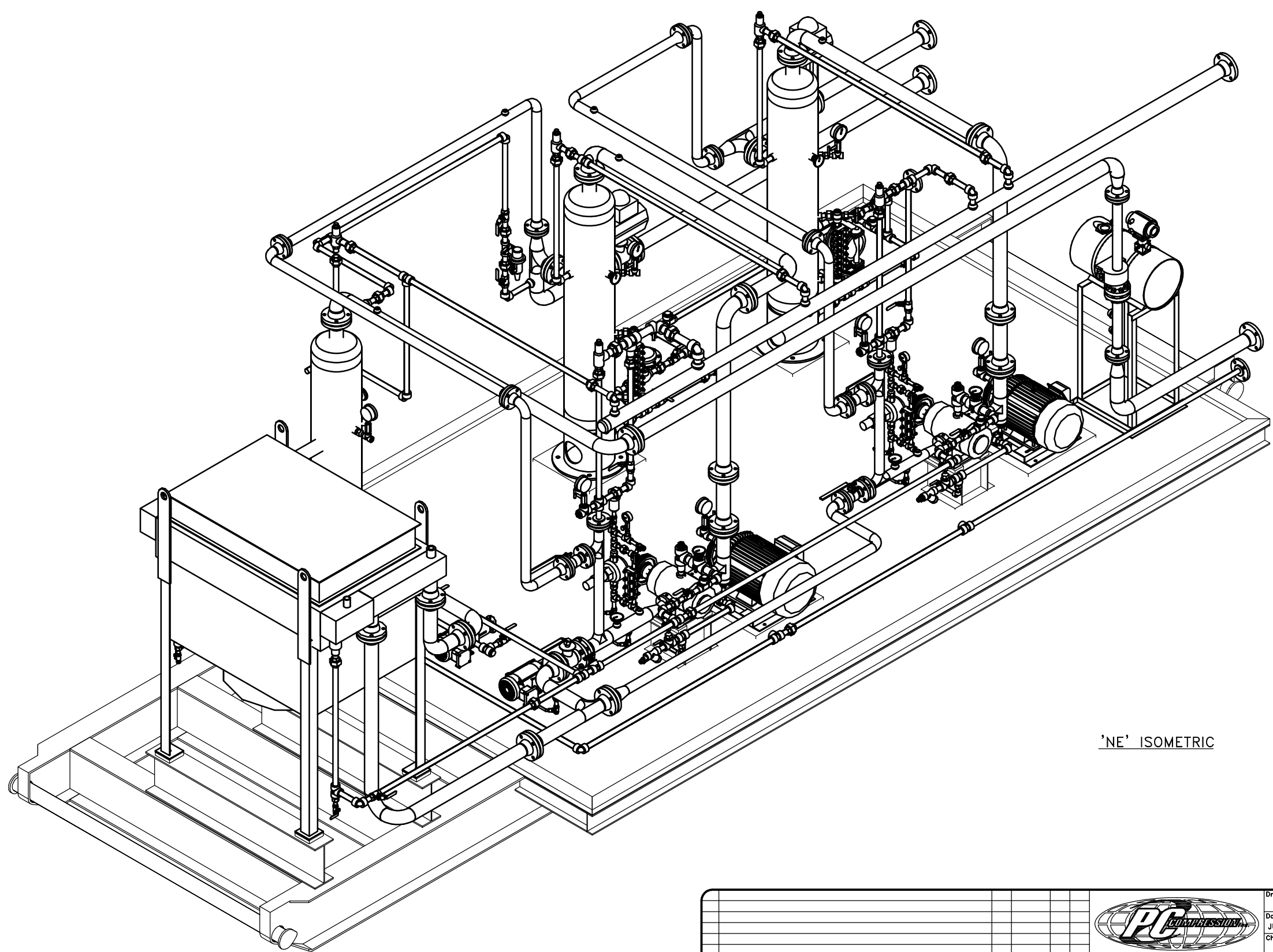
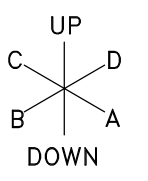


'SW' ISOMETRIC

AFE# 02013255FC
LSD: 01-18-03-28 W1M


						Drawn by: GDB Date: JUL 09/13 Checked by:		20HP VRU & 30HP BOOSTER PACKAGE RO-FLO 5CC w/ 20HP & RO-FLO 5CC w/ 30HP SOUR NAUTAL GAS SERVICE			
						Approved by:		Company: TUNDRA OIL AND GAS PARTNERSHIP			
607-15th Ave. Nisku Alberta T9E 2M6				Office: 780.955.4292 Fax: 780.955.4294 Toll Free: 866.955.4292		Scale: NTS	Quote/Ref. NO.: Q-13019 R1	JOB NO.: PC-512	Unit NO.: RF-13018	Drawing NO.: GA-RF13018-B-03	Rev.: A
A	ISSUED FOR APPROVAL	GDB	07-10-13								
REV.	DESCRIPTION	BY	DATE	CHKD	APPD						

C:\Users\browning\Desktop\E-3A-RF13018 Rev A.dwg, 07/10/13 4:31:42 PM, drawing, Property of PC Compression Inc. Duplication or Transmission without Permission is Prohibited.



'NE' ISOMETRIC

AFE# 02013255FC
LSD: 01-18-03-28 W1M

						Drawn by: GDB Date: JUL 09/13 Checked by:		20HP VRU & 30HP BOOSTER PACKAGE RO-FLO 5CC w/ 20HP & RO-FLO 5CC w/ 30HP SOUR NAUTAL GAS SERVICE			
						Approved by:		Company: TUNDRA OIL AND GAS PARTNERSHIP			
607-15th Ave. Nisku Alberta T9E 2M6				Office: 780.955.4292 Fax: 780.955.4294 Toll Free: 866.955.4292		Scale: NTS	Quote/Ref. NO.: Q-13019 R1	JOB NO.: PC-512	Unit NO.: RF-13018	Drawing NO.: GA-RF13018-B-04	Rev.: A
A	ISSUED FOR APPROVAL	GDB	07-10-13								
REV.	DESCRIPTION	BY	DATE	CHKD	APPD						