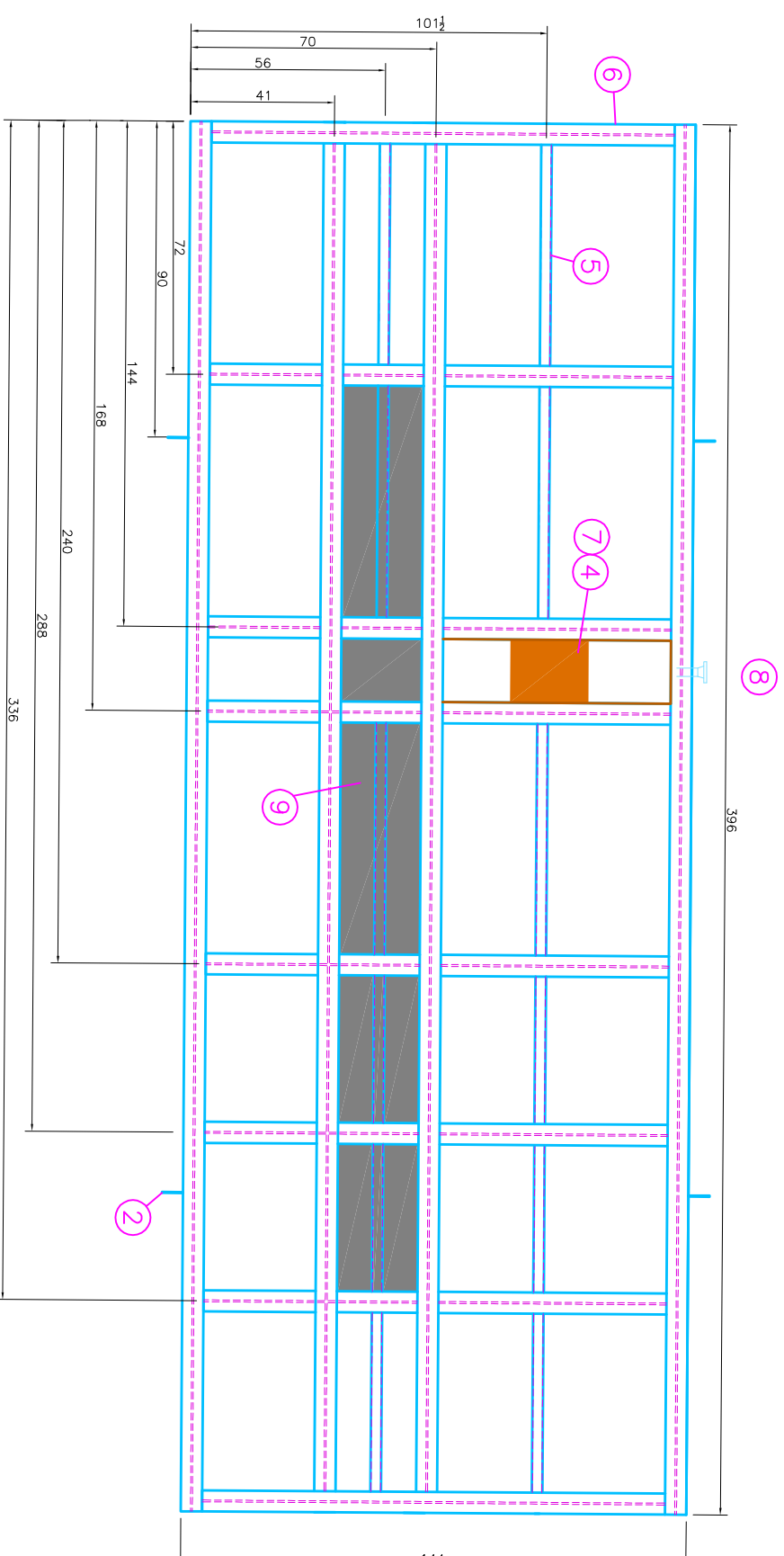
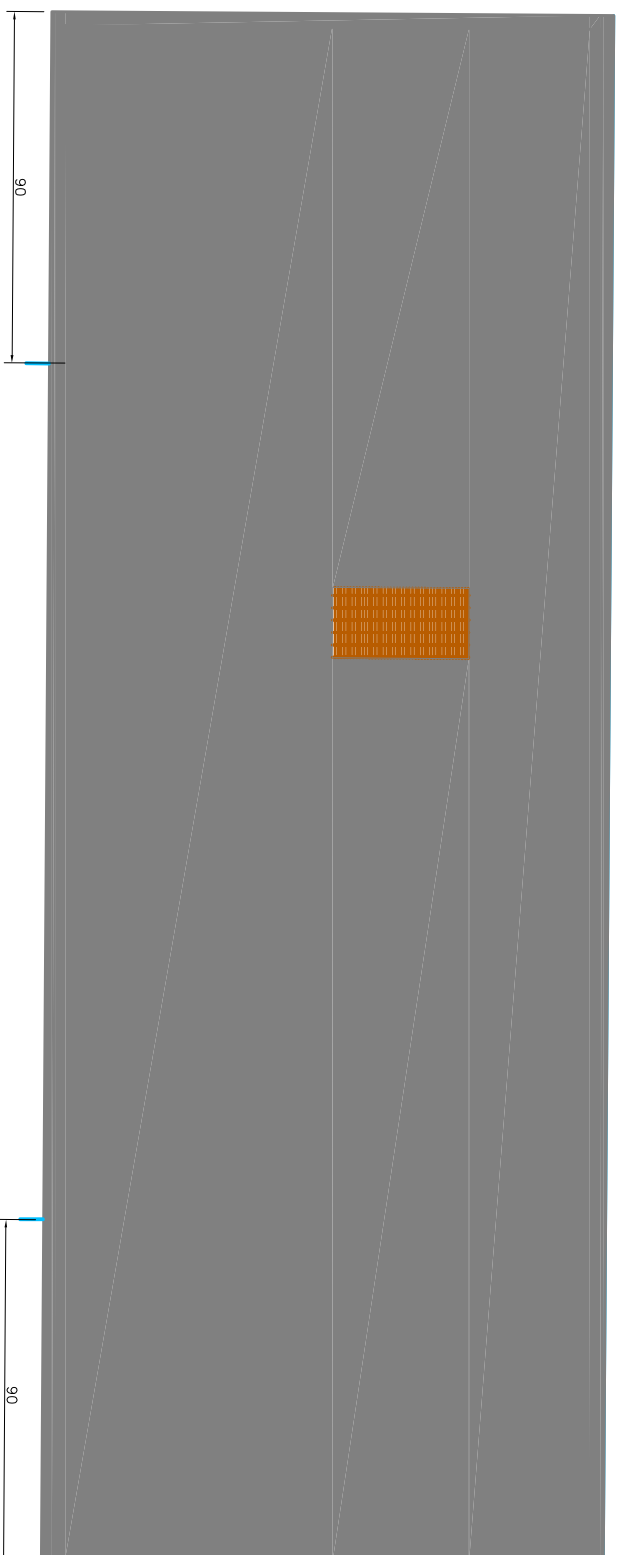
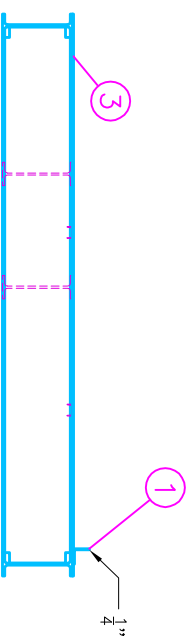


BILL OF MATERIAL			
ITEM	QTY	PART	DESCRIPTION
1	1056"	2" X 1/4"	CONTAINMENT LIP
2	4	LIFTING LUG 18@40	3/4" PLATE
3	6	PLATECH .250 1/4"	CHECKERPLATE (6mm)
4	1	SUMP	SUMP ASSEMBLY WITH GRATING
5	350"	C3.00@4.1	C CHANNEL
6	2540"	WF18.00@40	WIDE FLANGE BEAM
7	2	PLATE .25	1/4" PLATE
8	1	2 150# FLANGE	FLANGE CONNECTION FOR SUMP
9	1		CEMENT

NOTE: SUMP IS TO BE INSTALLED ON OPPOSITE SIDE OF REMOVABLE PANEL

NOTE: ELECTRICAL WIRING IS TO BE INSTALLED ON OPPOSITE SIDE OF REMOVABLE PANEL

NOTE: FLOOR SUMP IS NOT TO BE FROM PUMP TO WALL (ONLY REQUIRE A HALF SIZE)



NOTES:

REV	DESCRIPTION	BY	DATE	CHK	APP
0	ISSUED FOR REVIEW	LJ	10/13/2015	-	-

REFERENCE DRAWING

	DRAWN BY:	LJ	SCALE:	NTS	A/E:	TBA	DRAWING NUMBER:	5-23-9-28-DET-6300	REV NO:	0
						5-23-9-28 W1M BOOST PUMP SKID PRINT PAGE 1 OF 2				