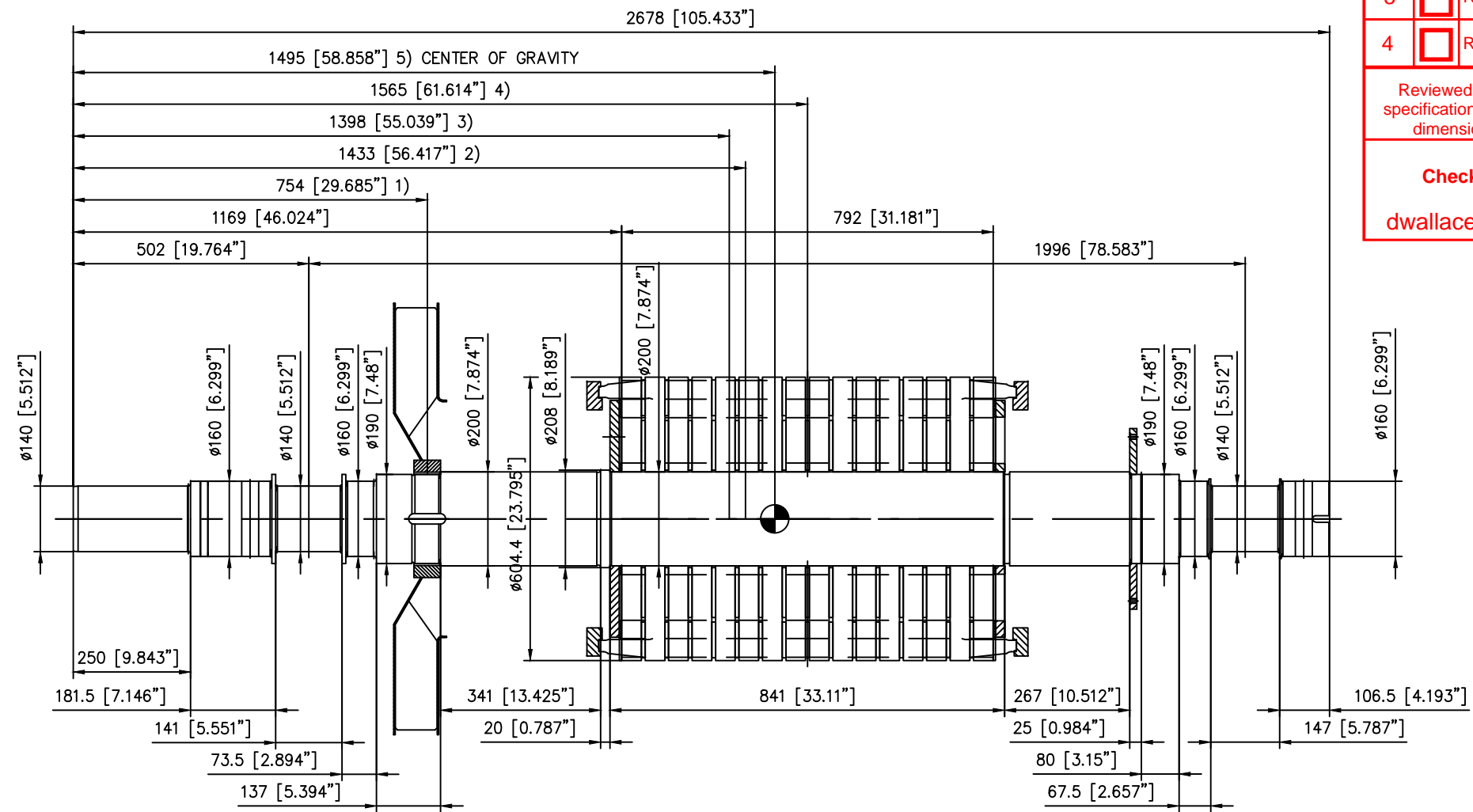


We reserve all rights in this document and in the information contained therein. Reproduction, use or disclosure to third parties without express authority is strictly forbidden.
© ABB ELECTRICAL MACHINES LTD.

Symbols for roughness according to ISO 1302, 9ADA 431

General tolerances for linear and angular dimensions and geometrical tolerances: ISO 2768 -mK Referential standards 9ADA 422, DIN 7168T.1

Enerflex Ltd. VENDOR DRAWING/DOCUMENT REVIEW CODES		
1	<input checked="" type="checkbox"/>	Reviewed and accepted with no comment.
2	<input type="checkbox"/>	Reviewed and accepted with comment. Work may proceed subject to incorporation of comments.
3	<input type="checkbox"/>	Revise and resubmit. Work will <u>NOT</u> proceed.
4	<input type="checkbox"/>	Review not required (for information only).
Reviewed only as to general conformity with the design concept and specifications provided. Sole responsibility for correct design, detail and dimensions shall remain with the party submitting the document.		
Checked By dwallace	Date 2/14/2019	Project No. E104026



- 1) FAN FOR INTERNAL COOLING m=43.9 kg J=4.3 kgm² [m=96.8 lbs J=102 ft²-lbs]
- 2) SHAFT TORSIONAL RIGIDITY Cm=4.24 MNm/rad [Cm=3.12*10e6 ft-lbs/rad]
- 3) SHAFT m=551.2 kg J=2.4 kgm² [m=1215.2 lbs J=57 ft²-lbs], EN 10083-3 - 34CrNiMo6+QT
- 4) CORE WITH ROTOR WINDING m=1125.6 kg J=66.1 kgm² [m=2481.6 lbs J=1569.3 ft²-lbs]
- 5) TOTAL m=1731.1 kg J=73.1 kgm² [m=3816.4 lbs J=1734.7 ft²-lbs]

BALANCING DISCS m=10.4 kg J=0.2 kgm² [m=22.9 lbs J=5.7 ft²-lbs]

Customer Reference 5: 02C 7.4_1750HP,6P,4kV_MSSappvd		Our Reference 2800IY200	Protection/Cooling
Additional Information			Poles 6
Prepared 2019-01-29 GRACE ZHAO	Title ROTOR		Scale 1:11.5
Reviewed 2019-01-29 LEON HUANG	Responsible Department		Language en
Approved 2019-01-29 KENNY KE	Original Dwg		
Distribution 14	Functional Code AR	Order No.	Weight
Type AMI 500L6W BSFNS		Mounting F2	Size A3
Document No. 3GYB3898260		Revision A	Sheet 1/1

ABB ELECTRICAL MACHINES LTD.

ABBA3BF1

AutoCAD