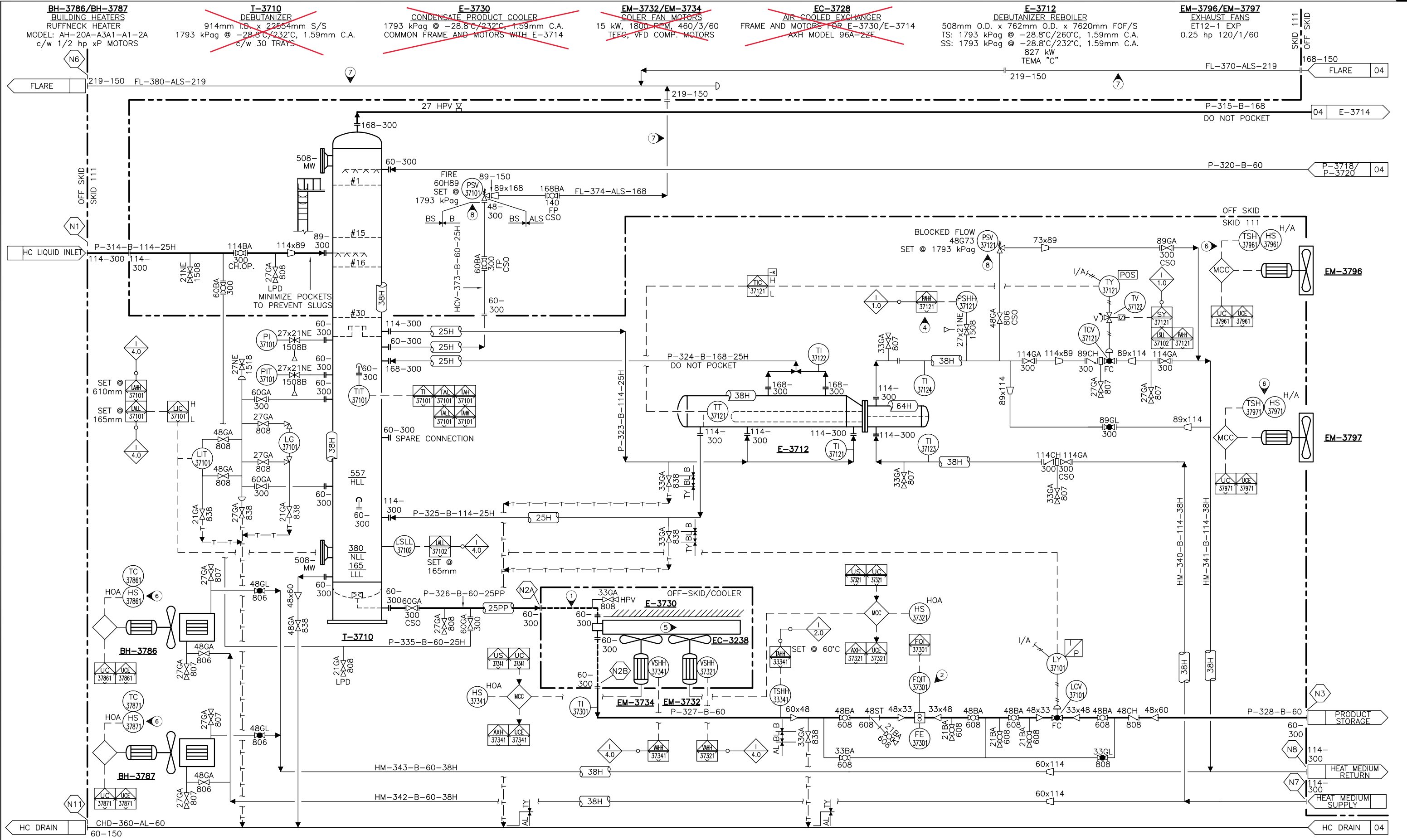


THIS DRAWING AND THE PROPERTY OF PROPAC SYSTEMS LTD., AND SHALL NOT BE DISCLOSED TO OTHERS OR REPRODUCED IN ANY MANNER OR USED FOR ANY PURPOSE WHATSOEVER EXCEPT BY WRITTEN CONSENT OF PROPAC.



- | | |
|--|---|
| 1. OFF SKID SPOOLS TO/FROM AIR COOLER SHALL BE SUPPLIED AND INSTALLED BY CUSTOMER. | 4. PSET IS 20% LESS THAN T-3710 OPERATING PRESSURE. |
| 2. ALLOW 20 PIPE DIA. UP AND 5 PIPE DIA. DOWN STREAM. | 5. INSTALLER TO ENSURE ADEQUATE DRAINAGE UNDER AIR COOLER TO PREVENT POOLING. |
| 3. ALL NE VALVES TO BE CONNECTED DIRECTLY TO PIPING/EQUIPMENT TOL (3 OUTLET VALVES). | 6. TSH AND HS SUPPLIED BY OTHERS. |
| | 7. CLIENT SOPE. |
| | 8. ALL PSV'S ARE FULL NACE (INLET, OUTLET, SPRING). |

DATE: 2015/03/27 10:24 AM J:\JOBS\14145316\20-DRAWINGS\FLW\MFS-145316-100-03.DWG ksedhain

No.	REVISION	BY	DATE	CKD	ENG
1	ISSUED FOR CONSTRUCTION	LEY	15/03/27	HDO	HDO
C	ISSUED FOR DESIGN	LW	15/01/26	SVT	SVT
B	RE-ISSUED FOR APPROVAL	LIS	14/12/12	HDO	HDO
A	ISSUED FOR APPROVAL	MAL	14/10/24	HDO	HDO

APPROVED		DRAWN	
MECH./STRUCT.	BY	M. LI	
DATE	DATE	14/10/24	
ELECTRICAL	BY	CHECKED	
DATE	BY	H. OELKE	
PROJECT	DATE	15/03/27	
DATE	SCALE		

DOE CREEK SOUR GAS PLANT
2-3700 DEBUTANIZER SKID
MECHANICAL FLOWSHEET

DWG. No.: D-MFS-145316-100 SHT. 3 OF 4 REV. 1

PROPAK
 440 East Lake Road,
 Airdrie, Alberta
 Canada T4A 2J8