

**INLET SEPARATOR BUILDING**  
8550L x 4287W

FOR DETAILED HEAT TRACING DESCRIPTION SEE DWG E-0225

**MATERIAL LIST**

| QTY | DESCRIPTION                  | MANUFACTURER | CATALOGUE NO. | QTY    | SUPPLIER   |
|-----|------------------------------|--------------|---------------|--------|------------|
| 1   | LIGHT FIXTURE (2x4)          | GRUZE-HINES  | 1200-101-1    | 1750   | CONTRACTOR |
| 2   | LIGHT FIXTURE (2x4)          | GRUZE-HINES  | 1200-101-2    | 3000   |            |
| 3   | LIGHT FIXTURE (2x4 LAMP 2P2) | GRUZE-HINES  | 1200-101-3    | 500    |            |
| 4   | LAMP (2x4)                   | GE OR EQUAL  | 480V 300W     | 45,000 |            |
| 5   | LAMP (2x4)                   | GE OR EQUAL  | 480V 300W     | 45,000 |            |
| 6   | OUTLET HANGER                | GRUZE-HINES  | 1200-101-4    | 100    |            |
| 7   | OUTLET HANGER                | GRUZE-HINES  | 1200-101-5    | 100    |            |
| 8   | OUTLET BOX/COVER/CASSET      |              | 1200-101-6    | 45,000 |            |
| 9   | OUTLET BOX/COVER/CASSET      |              | 1200-101-7    | 45,000 |            |
| 10  | OUTLET BOX                   |              | 1200-101-8    | 100    |            |
| 11  | OUTLET BOX                   |              | 1200-101-9    | 100    |            |
| 12  | OUTLET BOX                   |              | 1200-101-10   | 100    |            |
| 13  | OUTLET BOX                   |              | 1200-101-11   | 100    |            |
| 14  | OUTLET BOX                   |              | 1200-101-12   | 100    |            |
| 15  | OUTLET BOX                   |              | 1200-101-13   | 100    |            |
| 16  | SEALING COVER                |              | 1200-101-14   | 100    |            |
| 17  | CONCRETE SEAL                |              | 1200-101-15   | 100    |            |
| 18  | CONCRETE SEAL                |              | 1200-101-16   | 100    |            |
| 19  | CONCRETE SEAL                |              | 1200-101-17   | 100    |            |
| 20  | CONCRETE SEAL                |              | 1200-101-18   | 100    |            |
| 21  | CONCRETE SEAL                |              | 1200-101-19   | 100    |            |
| 22  | CONCRETE SEAL                |              | 1200-101-20   | 100    |            |
| 23  | CONCRETE SEAL                |              | 1200-101-21   | 100    |            |
| 24  | CONCRETE SEAL                |              | 1200-101-22   | 100    |            |
| 25  | CONCRETE SEAL                |              | 1200-101-23   | 100    |            |
| 26  | CONCRETE SEAL                |              | 1200-101-24   | 100    |            |
| 27  | CONCRETE SEAL                |              | 1200-101-25   | 100    |            |
| 28  | CONCRETE SEAL                |              | 1200-101-26   | 100    |            |
| 29  | CONCRETE SEAL                |              | 1200-101-27   | 100    |            |
| 30  | CONCRETE SEAL                |              | 1200-101-28   | 100    |            |
| 31  | CONCRETE SEAL                |              | 1200-101-29   | 100    |            |
| 32  | CONCRETE SEAL                |              | 1200-101-30   | 100    |            |
| 33  | CONCRETE SEAL                |              | 1200-101-31   | 100    |            |
| 34  | CONCRETE SEAL                |              | 1200-101-32   | 100    |            |
| 35  | CONCRETE SEAL                |              | 1200-101-33   | 100    |            |
| 36  | CONCRETE SEAL                |              | 1200-101-34   | 100    |            |
| 37  | CONCRETE SEAL                |              | 1200-101-35   | 100    |            |
| 38  | CONCRETE SEAL                |              | 1200-101-36   | 100    |            |
| 39  | CONCRETE SEAL                |              | 1200-101-37   | 100    |            |
| 40  | CONCRETE SEAL                |              | 1200-101-38   | 100    |            |
| 41  | CONCRETE SEAL                |              | 1200-101-39   | 100    |            |
| 42  | CONCRETE SEAL                |              | 1200-101-40   | 100    |            |
| 43  | CONCRETE SEAL                |              | 1200-101-41   | 100    |            |
| 44  | CONCRETE SEAL                |              | 1200-101-42   | 100    |            |
| 45  | CONCRETE SEAL                |              | 1200-101-43   | 100    |            |
| 46  | CONCRETE SEAL                |              | 1200-101-44   | 100    |            |
| 47  | CONCRETE SEAL                |              | 1200-101-45   | 100    |            |
| 48  | CONCRETE SEAL                |              | 1200-101-46   | 100    |            |
| 49  | CONCRETE SEAL                |              | 1200-101-47   | 100    |            |
| 50  | CONCRETE SEAL                |              | 1200-101-48   | 100    |            |
| 51  | CONCRETE SEAL                |              | 1200-101-49   | 100    |            |
| 52  | CONCRETE SEAL                |              | 1200-101-50   | 100    |            |
| 53  | CONCRETE SEAL                |              | 1200-101-51   | 100    |            |
| 54  | CONCRETE SEAL                |              | 1200-101-52   | 100    |            |
| 55  | CONCRETE SEAL                |              | 1200-101-53   | 100    |            |
| 56  | CONCRETE SEAL                |              | 1200-101-54   | 100    |            |
| 57  | CONCRETE SEAL                |              | 1200-101-55   | 100    |            |
| 58  | CONCRETE SEAL                |              | 1200-101-56   | 100    |            |
| 59  | CONCRETE SEAL                |              | 1200-101-57   | 100    |            |
| 60  | CONCRETE SEAL                |              | 1200-101-58   | 100    |            |
| 61  | CONCRETE SEAL                |              | 1200-101-59   | 100    |            |
| 62  | CONCRETE SEAL                |              | 1200-101-60   | 100    |            |
| 63  | CONCRETE SEAL                |              | 1200-101-61   | 100    |            |
| 64  | CONCRETE SEAL                |              | 1200-101-62   | 100    |            |
| 65  | CONCRETE SEAL                |              | 1200-101-63   | 100    |            |
| 66  | CONCRETE SEAL                |              | 1200-101-64   | 100    |            |
| 67  | CONCRETE SEAL                |              | 1200-101-65   | 100    |            |
| 68  | CONCRETE SEAL                |              | 1200-101-66   | 100    |            |
| 69  | CONCRETE SEAL                |              | 1200-101-67   | 100    |            |
| 70  | CONCRETE SEAL                |              | 1200-101-68   | 100    |            |
| 71  | CONCRETE SEAL                |              | 1200-101-69   | 100    |            |
| 72  | CONCRETE SEAL                |              | 1200-101-70   | 100    |            |
| 73  | CONCRETE SEAL                |              | 1200-101-71   | 100    |            |
| 74  | CONCRETE SEAL                |              | 1200-101-72   | 100    |            |
| 75  | CONCRETE SEAL                |              | 1200-101-73   | 100    |            |
| 76  | CONCRETE SEAL                |              | 1200-101-74   | 100    |            |
| 77  | CONCRETE SEAL                |              | 1200-101-75   | 100    |            |
| 78  | CONCRETE SEAL                |              | 1200-101-76   | 100    |            |
| 79  | CONCRETE SEAL                |              | 1200-101-77   | 100    |            |
| 80  | CONCRETE SEAL                |              | 1200-101-78   | 100    |            |
| 81  | CONCRETE SEAL                |              | 1200-101-79   | 100    |            |
| 82  | CONCRETE SEAL                |              | 1200-101-80   | 100    |            |
| 83  | CONCRETE SEAL                |              | 1200-101-81   | 100    |            |
| 84  | CONCRETE SEAL                |              | 1200-101-82   | 100    |            |
| 85  | CONCRETE SEAL                |              | 1200-101-83   | 100    |            |
| 86  | CONCRETE SEAL                |              | 1200-101-84   | 100    |            |
| 87  | CONCRETE SEAL                |              | 1200-101-85   | 100    |            |
| 88  | CONCRETE SEAL                |              | 1200-101-86   | 100    |            |
| 89  | CONCRETE SEAL                |              | 1200-101-87   | 100    |            |
| 90  | CONCRETE SEAL                |              | 1200-101-88   | 100    |            |
| 91  | CONCRETE SEAL                |              | 1200-101-89   | 100    |            |
| 92  | CONCRETE SEAL                |              | 1200-101-90   | 100    |            |
| 93  | CONCRETE SEAL                |              | 1200-101-91   | 100    |            |
| 94  | CONCRETE SEAL                |              | 1200-101-92   | 100    |            |
| 95  | CONCRETE SEAL                |              | 1200-101-93   | 100    |            |
| 96  | CONCRETE SEAL                |              | 1200-101-94   | 100    |            |
| 97  | CONCRETE SEAL                |              | 1200-101-95   | 100    |            |
| 98  | CONCRETE SEAL                |              | 1200-101-96   | 100    |            |
| 99  | CONCRETE SEAL                |              | 1200-101-97   | 100    |            |
| 100 | CONCRETE SEAL                |              | 1200-101-98   | 100    |            |

NOTE: A. ALL MATERIALS SHOWN ARE A GUIDE ONLY AND IT IS THE CONTRACTOR'S RESPONSIBILITY TO CHECK ALL CATALOGUE NUMBERS BEFORE ORDERING.  
B. CONTRACTOR TO SIZE, SUPPLY AND INSTALL ALL OVERHEAD HEATERS AS NOTED.

OCT 01 2002

PREPARED BY SUTON THOMAS INC. LTD.  
PROJECT No. 01-01A  
FILE No. 01008-0101P

**Taxila** ENGINEERING LTD.

**EMerMark Inc.**

**AS BUILT**

|       |           |       |                |
|-------|-----------|-------|----------------|
| DRWN  | J. GLETA  | DATE  | 02.03.02       |
| CHKD  | C. THOMAS | SCALE | 1:1            |
| APP'D |           | DWG # | E-0601 (POWER) |
| REV   |           | REV   | 1 of 2         |

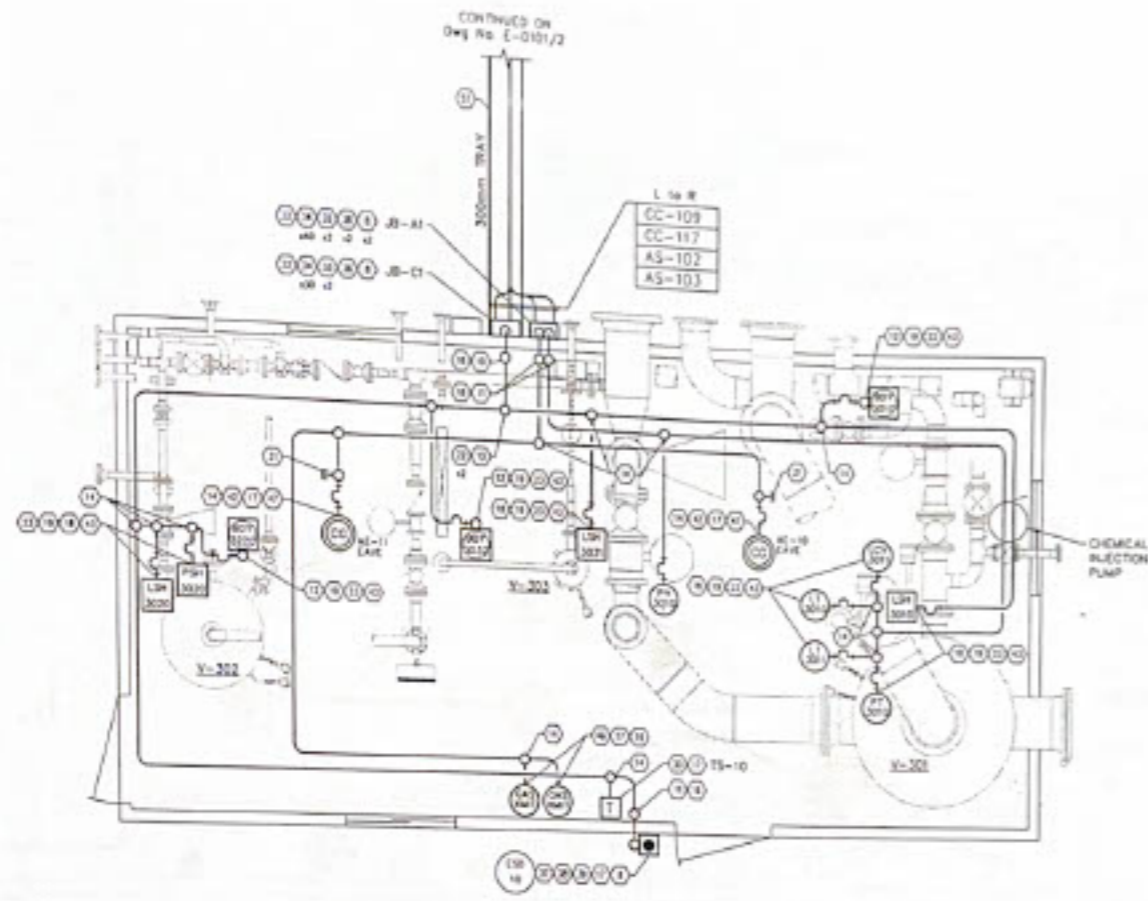
**GENERAL NOTES**

- ALL CONDUIT OR CABLE TO BE IDENTIFIED AT ORIGIN AND DESTINATION USING NUMBER 12 TAGS AND BURNED BY MEANS OF EQUIVALENT.
- ALL CONDUITS TO BE IDENTIFIED AT ORIGIN AND DESTINATION USING PVC STRIP SLICES.
- ALL CONDUIT AND CABLE TO BE SUPPORTED OFF ALL BUILDING WALLS AND STRUCTURAL USING UNFIBERED CHANNELS AND STRAPS.
- MINIMUM CLEARANCE BETWEEN CONDUIT SUPPORTS TO BE 1.8 METERS.
- STRAPS AND HOOKS BUILDING TO BE RUN INSIDE DUCT CONDUIT SLEEVES.
- ALL END SERVICES SHOWN ARE IN APPROXIMATE LOCATIONS ONLY.
- ALL UNDERGROUND CONDUITS AND CABLES SHALL BE PROTECTED USING TRIPLE WIND PLUMBING AND BARRING TAPE.

| NO. | DESCRIPTION             | BY | DATE     | CHK. |
|-----|-------------------------|----|----------|------|
| 1   | ISSUED FOR CONSTRUCTION | WH | 02/03/02 | JG   |
| 2   | AS BUILT                | WH | 02/03/02 | JG   |

**PERMIT**

**SEAL**



**INLET SEPARATOR BUILDING**  
8333L x 4287H

**MATERIAL LIST**

| ITEM NO. | QTY.    | DESCRIPTION                      | MANUFACTURER     | CATALOGUE No.   | SIZE        | SUPPLIER   |
|----------|---------|----------------------------------|------------------|-----------------|-------------|------------|
| 1        | AS REQD | LIGHT FIXTURE (2W)               | GRANGE-HMS       | 12424910        | 15W         | CONTRACTOR |
| 2        | "       | LIGHT FIXTURE (2W)               | GRANGE-HMS       | 12424910        | 15W         | "          |
| 3        | "       | LIGHT FIXTURE w/ LAMP (2W)       | APPLECTON        | 0401501         | 15W         | "          |
| 4        | "       | LAMP (2W)                        | GE OR OSRAM      | 4074 20W        | AS REQD     | "          |
| 5        | "       | LAMP (2W)                        | GE OR OSRAM      | 4074 20W        | AS REQD     | "          |
| 6        | "       | FIXTURE HANGER                   | GRANGE-HMS       | 144C 2101       | 1/2"        | "          |
| 7        | "       | FIXTURE SLIP                     | "                | 1244 206        | 1/2" x 1/2" | "          |
| 8        | "       | INLET BOX/COVER/GASKET           | "                | 1.3 199         | AS REQD     | "          |
| 9        | "       | INLET BOX/COVER/GASKET           | "                | 1.3 199         | AS REQD     | "          |
| 10       | "       | INLET BOX                        | "                | 2448 26-5A      | "           | "          |
| 11       | "       | INLET BOX                        | "                | 2448 26-5A      | 1/2"        | "          |
| 12       | "       | INLET BOX                        | "                | 2448 16-5A      | 1/2"        | "          |
| 13       | "       | INLET BOX                        | "                | 2447 26-5A      | "           | "          |
| 14       | "       | INLET BOX                        | "                | 2447 26-5A      | 1/2"        | "          |
| 15       | "       | INLET BOX                        | "                | 2446 16-5A      | 1/2"        | "          |
| 16       | "       | SEALING COVER                    | "                | 244 26-5A       | 1/2"        | "          |
| 17       | "       | CONDUIT SEAL                     | "                | 175 126-5A      | 1/2"        | "          |
| 18       | "       | CONDUIT SEAL                     | "                | 175 126-5A      | 1/2"        | "          |
| 19       | "       | CONDUIT UNION                    | "                | 181-5A 199      | AS REQD     | "          |
| 20       | "       | CONDUIT ELBOW                    | "                | 181-5A 199      | AS REQD     | "          |
| 21       | "       | CONDUIT FLUG                     | "                | 181-5A 199      | AS REQD     | "          |
| 22       | "       | CONDUIT REDUCER                  | "                | 181-5A 199      | 1" - 1/2"   | "          |
| 23       | "       | CONDUIT REDUCER                  | "                | 181-5A 199      | 1/2" - 1/4" | "          |
| 24       | "       | TABLET SWITCH                    | "                | 123C 210        | 1/2"        | "          |
| 25       | "       | RECEPTACLE FACTORY SEALED        | "                | 123C 210        | 1/2"/10A    | "          |
| 26       | "       | MINIATURE CIRCUIT BREAKER        | "                | 123C 210        | 1/2"/10A    | "          |
| 27       | "       | TABLET SWITCH (2 WAY)            | GRANGE-HMS       | 123C 210        | 1/2"        | "          |
| 28       | "       | W-3-A CONTROL STATION            | ALLEN-BRADLEY    | 800-8347        | 1/2"        | "          |
| 29       | "       | W-3-A FLANGE SEAL KIT & DRAW KIT | ALLEN-BRADLEY    | 800-49288-493   | "           | "          |
| 30       | "       | TERMINAL                         | WESTINGHOUSE     | "               | "           | "          |
| 31       | "       | JUNCTION BOX (CSA & FIBERGLASS)  | HAWKING          | 71088           | 12"x12"     | "          |
| 32       | "       | JUNCTION BOX (CSA & FIBERGLASS)  | HAWKING          | 71088           | 12"x12"     | "          |
| 33       | "       | JUNCTION BOX (CSA & FIBERGLASS)  | HAWKING          | 71088           | 12"x12"     | "          |
| 34       | "       | TERMINAL BLOCK w/ WIRING BARS    | WESTINGHOUSE     | 1484 / 1321 B&B | 15A         | "          |
| 35       | "       | 1/4" TEE CONNECTOR               | "                | 14 8423         | AS REQD     | "          |
| 36       | "       | WATERPROOF HUB                   | WESTINGHOUSE     | "               | AS REQD     | "          |
| 37       | "       | 1/2" PUSHBUTTON                  | ALLEN-BRADLEY    | 800-128A        | 1 NC        | "          |
| 38       | "       | CONTACT BLOCK                    | "                | 800-127         | NC          | "          |
| 39       | "       | ENCLOSURE                        | ALLEN-BRADLEY    | 800-127M        | 1/2"        | "          |
| 40       | "       | SELECTOR SWITCH (LOADING)        | GRANGE-HMS       | 123-1271        | 1.5A        | "          |
| 41       | "       | LIQUID TIGHT FLEX w/ CONNECTORS  | "                | "               | "           | "          |
| 42       | "       | FLEXIBLE COUPLING                | "                | 123-123         | 1/2"x1/2"   | "          |
| 43       | "       | FLEXIBLE COUPLING                | "                | 123-123         | 1/2"x1/2"   | "          |
| 44       | AS REQD | PILOT LIGHT                      | GRANGE-HMS       | 123-124-1       | 1/2"        | CONTRACTOR |
| 45       | 2       | THEMISTAT                        | "                | "               | "           | OWNER      |
| 46       | 2       | GAS DETECTOR                     | GENERAL MONITORS | 7400C-1-3-2     | "           | OWNER      |
| 47       | 2       | GAS DETECTOR SEPARATION KIT      | GENERAL MONITORS | 7000-1          | "           | OWNER      |
| 48       | 1       | UV IRRADIATION DETECTOR          | "                | 8128-24-28-12   | 1/4"        | "          |
| 49       | 1       | MOUNTING BRACKET                 | GENERAL MONITORS | 7112-1          | "           | OWNER      |
| 50       | AS REQD | ALUMINUM CABLE TRAY (21 RATED)   | FLORIN OR EQUAL  | 1824L30-6       | 300mm       | CONTRACTOR |
| 51       | "       | ALUMINUM CABLE TRAY (21 RATED)   | "                | 1824L30-6       | 300mm       | "          |
| 52       | "       | ALUMINUM CABLE TRAY (21 RATED)   | "                | 1824L30-6       | 300mm       | "          |
| 53       | "       | ALUMINUM CABLE TRAY (21 RATED)   | "                | 1824L30-6       | 150mm       | "          |
| 54       | "       | HORIZONTAL CLOSURE               | "                | --S&L--H80      | AS REQD     | "          |
| 55       | "       | OUTSIDE VERTICAL IS              | "                | --S&L--V80      | AS REQD     | "          |
| 56       | "       | HORIZONTAL TEE                   | FLORIN OR EQUAL  | 600mm 48205     | AS REQD     | "          |
| 57       | AS REQD | FLEXIBLE COUPLING                | GRANGE-HMS       | 123-123         | 1/2"        | CONTRACTOR |
| 58       |         |                                  |                  |                 |             |            |
| 59       |         |                                  |                  |                 |             |            |
| 60       |         |                                  |                  |                 |             |            |

NOTE: A. ALL MATERIALS SHOWN ARE A GUIDE ONLY AND IT IS THE CONTRACTOR'S RESPONSIBILITY TO CHECK ALL CATALOGUE NUMBERS BEFORE ORDERING.  
B. CONTRACTOR TO SIZE, SUPPLY AND INSTALL ALL OVERLOAD HEATERS AS REQD.

OCT 01 2017

PREPARED BY: SUTON THOMAS INC LTD  
PROJECT No: 01-056  
FILE No: 01056-ED01C

**GENERAL NOTES**

- ALL CONDUIT OR CABLE TO BE EQUIPPED AT ORIGIN AND DESTINATION USING ALUMINUM IS. TACS AND BUNDLED TO WEAPS OR EQUIVALENT.
- ALL CONNECTIONS TO BE IDENTIFIED AT ORIGIN AND DESTINATION USING PVC SHOWN SLEEVES.
- ALL CONDUIT AND CABLE DEVICES TO BE SUPPORTED OFF ALL BUILDING WALLS AND FLOORING USING UNDRIBB CHAIRS AND STRAPS.
- MAINTAIN DISTANCE BETWEEN CONDUIT SUPPORTS TO BE 1.5 METERS.
- DRAMA AND INHIBIT BUILDING TO BE RUN INSIDE ENT CONDUIT SLEEVES.
- ALL CABLE DEVICES SHOWN ARE IN APPROXIMATE LOCATIONS ONLY.
- ALL UNDERGROUND CONDUITS AND CABLES SHALL BE PROTECTED USING REINFORCED CONCRETE AND MARKED WITH TAPE.

| NO. | DESCRIPTION             | BY | DATE  | DR.  |
|-----|-------------------------|----|-------|------|
|     |                         |    |       |      |
| 1   | ISSUED FOR CONSTRUCTION | WR | 02/08 | J.S. |
| 2   | AS BUILT                | WR | 02/08 | C.S. |

PERMIT

SEAL

**AS BUILT**

**Taxi** GAS ENGINEERING LTD

DATE: 02.03.18  
APP: C. THOMAS

**EnerMark Inc.**

JOARCAM 11-13 BATTERY  
LSD 11-13-50-22 W&M  
INLET SEPARATOR BLDG - ELECTRICAL LAYOUT

SCALE: D=1:30, S=1:60  
SHEET: E-0601 (CONTROL) 2 of 2