

P-108	PC-100
C-108	PC-101
P-109	PC-104
C-109	PC-107
P-119	PC-109
P-120	DP-102
P-121	
#2/0 GND	

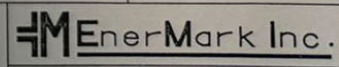
ITEM NO.	QTY.	DESCRIPTION	MANUFACTURER	CATALOG NO.	SIZE	SUPPLIER
1	AS REQ'D	LIGHT FIXTURE (M.H.)	CRUOSE-HINOS	EMPA193171	175W	CONTRACTOR
2		LIGHT FIXTURE (M.H.)	CRUOSE-HINOS	EVA 210	200W	
3		LIGHT FIXTURE (M.H. LAMP (HPS))	APPLETON	OM70LAIN	70W	
4		LAMP (M.H.)	GE OR EQUAL	MSR-N SERVICE	AS REQ'D	
5		LAMP (M.H.)	GE OR EQUAL	MSR-N SERVICE	AS REQ'D	
6		FIXTURE HANGER	CRUOSE-HINOS	FANC 2702	3/4"	
7		FIXTURE FLEX		ECH-206	3/4" x 6"	
8		OUTLET BOX/COVER/GASKET		LB-3 TYPE	AS REQ'D	
9		OUTLET BOX		T-9 TYPE	AS REQ'D	
10		OUTLET BOX		QUAB 36-SA	1"	
11		OUTLET BOX		QUAB 26-SA	3/4"	
12		OUTLET BOX		QUAB 16-SA	1/2"	
13		OUTLET BOX		QUAT 36-SA	1"	
14		OUTLET BOX		QUAT 26-SA	3/4"	
15		OUTLET BOX		QUAC 06-SA2	1/2"	
16		SEALING COVER		EYS 216-SA	3/4"	
17		CONDUIT SEAL		EYS 116-SA	1/2"	
18		CONDUIT UNION		UNY-SA TYPE	AS REQ'D	
19		CONDUIT ELBOW		PLG-SA TYPE	AS REQ'D	
20		CONDUIT PULL		RE 21-SA	1" - 3/4"	
21		CONDUIT REDUCER		RE 21-SA	3/4" - 1/2"	
22		CONDUIT REDUCER		EDSC 2129	3/4"	
23		CONDUIT REDUCER		CPS 152-201	3/4" / 20A	
24		RECEPTACLE (FACTORY SEALED)		EDSC 2199	3/4" / 1P	
25		MANUAL MOTOR SW (NOTE 9)		EDSC 2130	3/4"	
26		TUMBLER SWITCH (3 WAY)	CRUOSE-HINOS	EDSC 2130	3/4"	
27		FL-3-A CONTROL STATION	ALLEN-BRADLEY	800H-R3A47	3/4"	
28		HQA FLANGE SEAL KIT @ DRAIN KIT	ALLEN-BRADLEY	800H-RP20/800H-RP21		
29		THERMOSTAT	HONEYWELL	T8051B		
30		JUNCTION BOX (CSA 4 FIBERGLASS)	HAMMOND	P1026RL	10"x8"x6"	
31		JUNCTION BOX (CSA 4 FIBERGLASS)	HAMMOND	P10148L	16"x14"x8"	
32		JUNCTION BOX (CSA 4 FIBERGLASS)	HAMMOND	P10216RL	20"x16"x8"	
33		TERMINAL BLOCK c/w MOUNTING RAIL	WEDMULLER	SAKA / TS22 RAIL	25A	
34		HE. TRUCK CONNECTOR	T & B	HL RATED	AS REQ'D	
35		WEATHERPROOF HUB	MYERS OR EQUAL		AS REQ'D	
36		ESD PUSHBUTTON	ALLEN-BRADLEY	800H-OP6A	1 NC	
37		CONTACT BLOCK		800T-020P	NC	
38		ENCLOSURE	ALLEN-BRADLEY	800H-1H44R	3/4"	
39		SELECTOR SWITCH (LEAD/LAG)	CRUOSE-HINOS	SPS-21271	2 POS.	
40		LIQUID TIGHT FLEX c/w CONNECTORS	T & B			
41		FLEXIBLE COUPLING		ECH-210	3/4"x10"	
42		FLEXIBLE COUPLING		ECH-110	1/2"x10"	
43		AS REQ'D PILOT LIGHT	CRUOSE-HINOS	EPSC-2524-21	3/4"	CONTRACTOR
44		3 THERMOSTAT				OWNER
45		2 GAS DETECTOR	GENERAL MONITORS	S4000C-1-0-01		OWNER
46		2 GAS DETECTION SEPARATION KIT	GENERAL MONITORS	#1000-1		OWNER
47		1 LIV FIRE DETECTOR	GENERAL MONITORS	FL300-321-106-121	24VDC	
48		1 MOUNTING BRACKET	GENERAL MONITORS	71172-1		OWNER
49	AS REQ'D	ALUMINUM CABLE TRAY (D1 RATED)	PILGRIM OR EQUAL	900AAL30-6	900mm	CONTRACTOR
50		ALUMINUM CABLE TRAY (D1 RATED)		600AAL30-6	600mm	
51		ALUMINUM CABLE TRAY (D1 RATED)		300AAL30-6	300mm	
52		ALUMINUM CABLE TRAY (D1 RATED)		150AAL30-6	150mm	
53		HORIZONTAL ELBOW		--DAHL-H90	AS REQ'D	
54		OUTSIDE VERTICAL 90		--DAHL-OV90	AS REQ'D	
55		HORIZONTAL TEE	PILGRIM OR EQUAL	600mm RADIUS	AS REQ'D	
56		FLEXIBLE COUPLING	CRUOSE-HINOS	ECH-310	1"x10"	
57		HEAT TRACE POWER KIT	RAYCHEM	.B5-100-A		
58	AS REQ'D	HEAT TRACE END KIT c/w RED LIGHT	RAYCHEM	E-100-L2-A	200-277V	CONTRACTOR
59						
60						

NOTE: A. ALL MATERIALS SHOWN ARE A GUIDE ONLY AND IT IS THE CONTRACTORS RESPONSIBILITY TO CHECK ALL CATALOGUE NUMBERS BEFORE ORDERING.
 B. CONTRACTOR TO SIZE, SUPPLY AND INSTALL ALL OVERLOAD HEATERS AS REQ'D.

FOR DETAILED HEAT TRACING DESCRIPTION SEE DWG JE-0225



PREPARED BY SUTTON, THOMAS ENG. LTD.
 PROJECT No. 01-056
 FILE No. 01056-E0603P



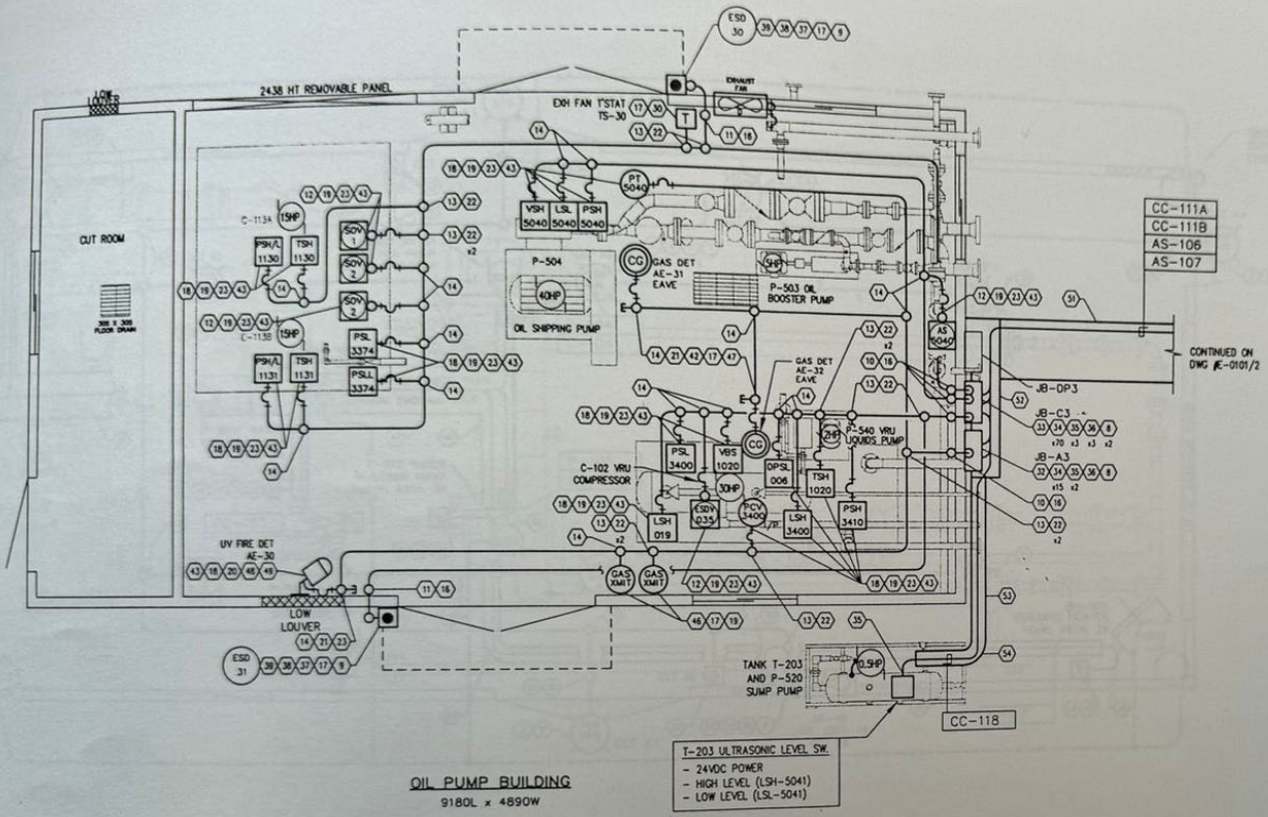
JOARCAM 11-13 BATTERY
 LSD 11-13-50-22 W4M
 OIL PUMP BLDG - ELECTRICAL LAYOUT

DRAWN	DATE
Marc de Hoas	02.03.20
CHKD	APP'D
J. DELETA	C. THOMAS

SCALE	DWG #	REV
D=1:30, B=1:60	E=0603P (POWER) 1 of 2	2

REFERENCE DRAWINGS		REVISIONS				
NUMBER	TITLE	NO.	DESCRIPTION	BY	DATE	CHK.
1	ISSUED FOR CONSTRUCTION			M.H.B.	02.04.08	J.G.
2	AS BUILT			M.H.B.	02.09.20	G.G.

ED SUPPORTED OFF ALL BUILDING WALLS AND STRAPS. SUPPORTS TO BE 1.5 METERS. RUN WORK OUT CONDUIT SLEEVES. TERMINATE LOCATIONS ONLY. ALL SHALL BE PROTECTED USING TAPE.



OIL PUMP BUILDING
9180L x 4890W

ITEM NO.	QTY.	DESCRIPTION	MANUFACTURER	CATALOG No.	SIZE	SUPPLIER	
1	AS REQ'D	LIGHT FIXTURE (M.H.)	CROUSE-HINDS	EHPA193171	175W	CONTRACTOR	
2	-	LIGHT FIXTURE (M.C.)	CROUSE-HINDS	EVJ 210	200W	-	
3	-	LIGHT FIXTURE c/w LAMP (MPS)	APPLETON	GM70101M	70W	-	
4	-	LAMP (M.H.)	GE OR EQUAL	VERBEN SERVICE	AS REQ'D	-	
5	-	LAMP (M.C.)	GE OR EQUAL	VERBEN SERVICE	AS REQ'D	-	
6	-	FIXTURE HANGER	CROUSE-HINDS	FAHC 2702	3/4"	-	
7	-	FIXTURE FLEX	-	ECHP 206	3/4" x 6"	-	
8	-	OUTLET BOX/COVER/CASKET	-	-	1B, 9 TYPE	AS REQ'D	-
9	-	OUTLET BOX/COVER/CASKET	-	-	T, 9 TYPE	AS REQ'D	-
10	-	OUTLET BOX	-	-	QUAB 36-SA	1"	-
11	-	OUTLET BOX	-	-	QUAB 26-SA	3/4"	-
12	-	OUTLET BOX	-	-	QUAB 16-SA	1/2"	-
13	-	OUTLET BOX	-	-	QUAT 36-SA	1"	-
14	-	OUTLET BOX	-	-	QUAT 26-SA	3/4"	-
15	-	OUTLET BOX	-	-	QUAT 16-SA	1/2"	-
16	-	SEALING COVER	-	-	QUA 06-SAZ	3" OPNG	-
17	-	CONDUIT SEAL	-	-	EYS 216-SA	3/4"	-
18	-	CONDUIT SEAL	-	-	EYS 116-SA	1/2"	-
19	-	CONDUIT UNION	-	-	UNY-SA TYPE	AS REQ'D	-
20	-	CONDUIT ELBOW	-	-	UNY-SA TYPE	AS REQ'D	-
21	-	CONDUIT PLUG	-	-	PLG-SA TYPE	AS REQ'D	-
22	-	CONDUIT REDUCER	-	-	RE 32-SA	1" - 3/4"	-
23	-	CONDUIT REDUCER	-	-	RE 21-SA	3/4" - 1/2"	-
24	-	TUMBLER SWITCH	-	-	EDSC 2129	3/4"	-
25	-	RECEPTACLE (FACTORY SEALED)	-	-	CPS 152-201	3/4" 20A	-
26	-	MANUAL MOTOR SW (NOTE 8)	-	-	EDSC 2199	3/4" 1P	-
27	-	TUMBLER SWITCH (3-WAY)	CROUSE-HINDS	EDSC 2130	3/4"	-	
28	-	H-G-A CONTROL STATION	ALLEN-BRADLEY	800H-12347	3/4"	-	
29	-	HDA FLANGE SEAL KIT & DRAIN KIT	ALLEN-BRADLEY	800H-MPS/800H-MPS	-	-	
30	-	THERMOSTAT	HONEYWELL	T505B	-	-	
31	-	JUNCTION BOX (CSA 4 FIBERGLASS)	HAMMOND	P12088	10"x8"x8"	-	
32	-	JUNCTION BOX (CSA 4 FIBERGLASS)	HAMMOND	P12088	16"x14"x8"	-	
33	-	JUNCTION BOX (CSA 4 FIBERGLASS)	HAMMOND	P120168	20"x16"x8"	-	
34	-	TERMINAL BLOCK c/w MOUNTING RAIL	HEIDMULLER	SAK4 / TS32 RAIL	25A	-	
35	-	HL TECK CONNECTOR	T & B	HL RATED	AS REQ'D	-	
36	-	WEATHERPROOF HUB	MYERS OR EQUAL	-	AS REQ'D	-	
37	-	ESD PUSHBUTTON	ALLEN-BRADLEY	800H-DPSA	1 NC	-	
38	-	CONTACT BLOCK	800T-102P	-	NC	-	
39	-	ENCLOSURE	ALLEN-BRADLEY	800H-1H24R	3/4"	-	
40	-	SELECTOR SWITCH (LEAD/LAG)	CROUSE-HINDS	EFS-21271	2 POS.	-	
41	-	LIQUID TIGHT FLEX c/w CONNECTORS	T & B	-	-	-	
42	-	FLEXIBLE COUPLING	-	ECH-110	3/4"x10"	-	
43	-	FLEXIBLE COUPLING	-	ECH-110	1/2"x10"	-	
44	AS REQ'D	PILOT LIGHT	CROUSE-HINDS	EPSC-2524-J1	3/4"	CONTRACTOR	
45	3	THERMOSTAT	-	-	-	OWNER	
46	2	GAS DETECTOR	GENERAL MONITORS	S4000-1-0-01	-	OWNER	
47	2	GAS DETECTION SEPARATION KIT	GENERAL MONITORS	R0001-1	-	OWNER	
48	1	UV FIRE DETECTOR	-	FL3101-321-108-121	24VDC	-	
49	1	MOUNTING BRACKET	GENERAL MONITORS	71172-1	-	OWNER	
50	AS REQ'D	ALUMINUM CABLE TRAY (01 RATED)	PILGRIM OR EQUAL	900A4L30-6	900mm	CONTRACTOR	
51	-	ALUMINUM CABLE TRAY (01 RATED)	-	600A4L30-6	600mm	-	
52	-	ALUMINUM CABLE TRAY (01 RATED)	-	300A4L30-6	300mm	-	
53	-	ALUMINUM CABLE TRAY (01 RATED)	-	150A4L30-6	150mm	-	
54	-	HORIZONTAL ELBOW	-	--04HL-H90	AS REQ'D	-	
55	-	OUTSIDE VERTICAL 90	-	--04HL-OV90	AS REQ'D	-	
56	-	HORIZONTAL TEE	PILGRIM OR EQUAL	600mm RADIUS	AS REQ'D	-	
57	AS REQ'D	FLEXIBLE COUPLING	CROUSE-HINDS	ECH-310	1"x10"	CONTRACTOR	
58	-	-	-	-	-	-	
59	-	-	-	-	-	-	
60	-	-	-	-	-	-	

NOTE: A. ALL MATERIALS SHOWN ARE A GUIDE ONLY AND IT IS THE CONTRACTORS RESPONSIBILITY TO CHECK ALL CATALOGUE NUMBERS BEFORE ORDERING.
B. CONTRACTOR TO SIZE, SUPPLY AND INSTALL ALL OVERLOAD HEATERS AS REQ'D.

AS

OCT 01 2002

PREPARED BY SUTTON, THOMAS ENG. LTD.
PROJECT No. 01-056
FILE No. 01056-E0603C

Tuxta GAS ENGINEERING LTD.

EnerMark Inc.

JOARCAM 11-13 BATTERY
LSD 11-13-50-22 W4M
OIL PUMP BLDG - ELECTRICAL LAYOUT

DRAWN Marc de Hoos	DATE 02.03.20	SCALE D=1:30, B=1:60	DWG # E-0603C (CONTROL) 2 of 2	REV. 3
CHK'D J. CELETA	APP'D C. THOMAS			

REFERENCE DRAWINGS		REVISIONS				
NUMBER	TITLE	NO.	DESCRIPTION	BY	DATE	CHK.
		1	ISSUED FOR CONSTRUCTION	MGH	02.04.08	J.G.
		2	GENERAL REVISION	MGH	02.04.12	J.G.
		3	AS BUILT	MGH	02.09.26	G.O.

FROM AND DESTINATION USING EQUIVALENT.
FROM AND DESTINATION USING PVC STRAPS.
TO BE 1.5 METERS.
LOCATIONS ONLY.
ALL BE PROTECTED USING

PERMIT

SEAL