

Fueled Pump Package Inspection Report
Pump Model 59T-3 With 2.5” Plungers

Performed by
Rotating Right (2016) Inc.
10/21/2024

1. Power End Inspection

- 1.1 – Lube oil is clean
- 1.2 - Crankshaft condition is good
- 1.3 - End play is good
- 1.4 - Connrod bearings are good

2. Fluid End

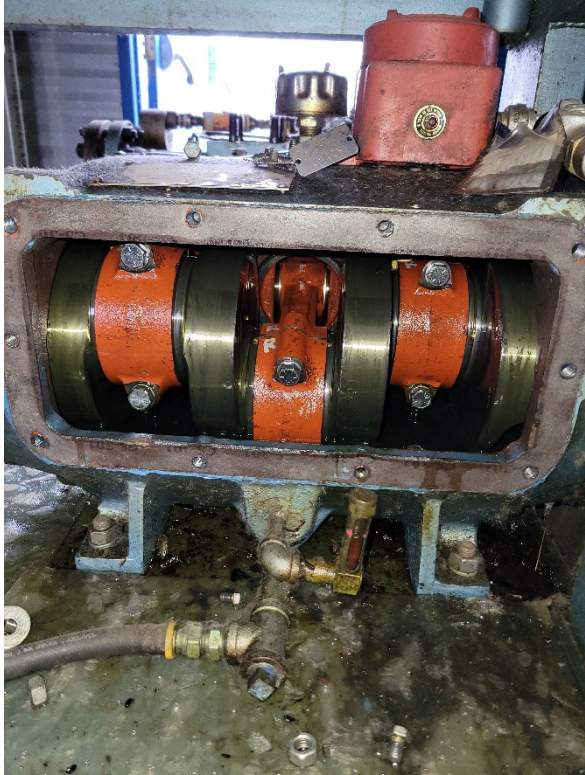
- 2.1 – Carbon Steel Fluid End- not sleeved in good condition
- 2.2 – Packing Leak Detection
- 2.3 – 2-1/2” Tungsten Carbide Plungers and Style 838 non-adjustable packing
- 2.4 – Abrasion Resistant valves in good condition
- 2.5 – Plunger lubrication system
- 2.6 - Discharge nozzles 2” 1500 ANSI
- 2.7 - Suction nozzles 3” 300 ANSI

3. Piping

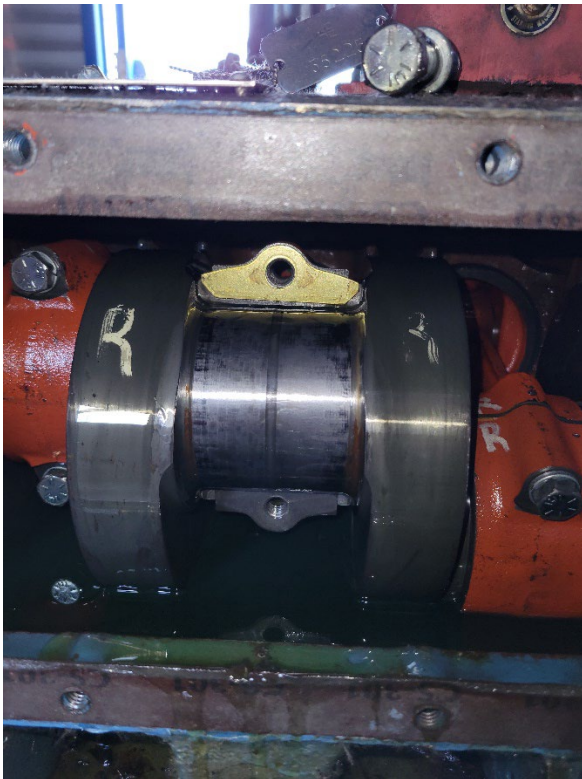
- 3.1 – Discharge goes from 2” 1500 to 4” 600 to 2” 600
- 3.2 – Suction 3” 300 ANSI
- 3.3 – PSV ¾” Taylor set at 740 PSI

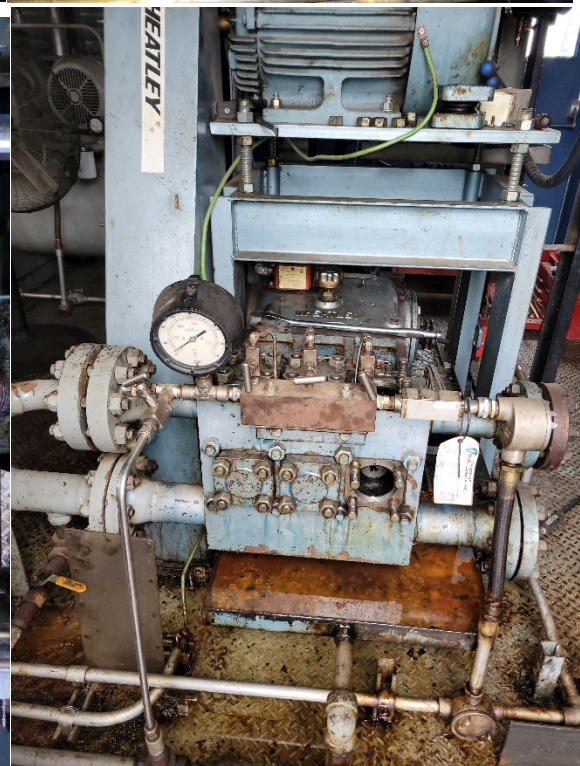
4. Building and Skid

- 4.1 - Building is in good condition
- 4.2 – Sump has fluid and crystalized salt
- 4.3 – There would be plenty of room for 3 bag filter housing if VRU and compressor are removed



Power End





Fluid End

