

*** P-503
OIL BOOSTER PUMP**

MAKE: EAGLE
MODEL: A 100
MOTOR: WESTINGHOUSE 5 HP, 400/3/70
S.F.: 1.15
RATE (MAX): 310 G.P.M.

**TK-504
LUBE TANK**

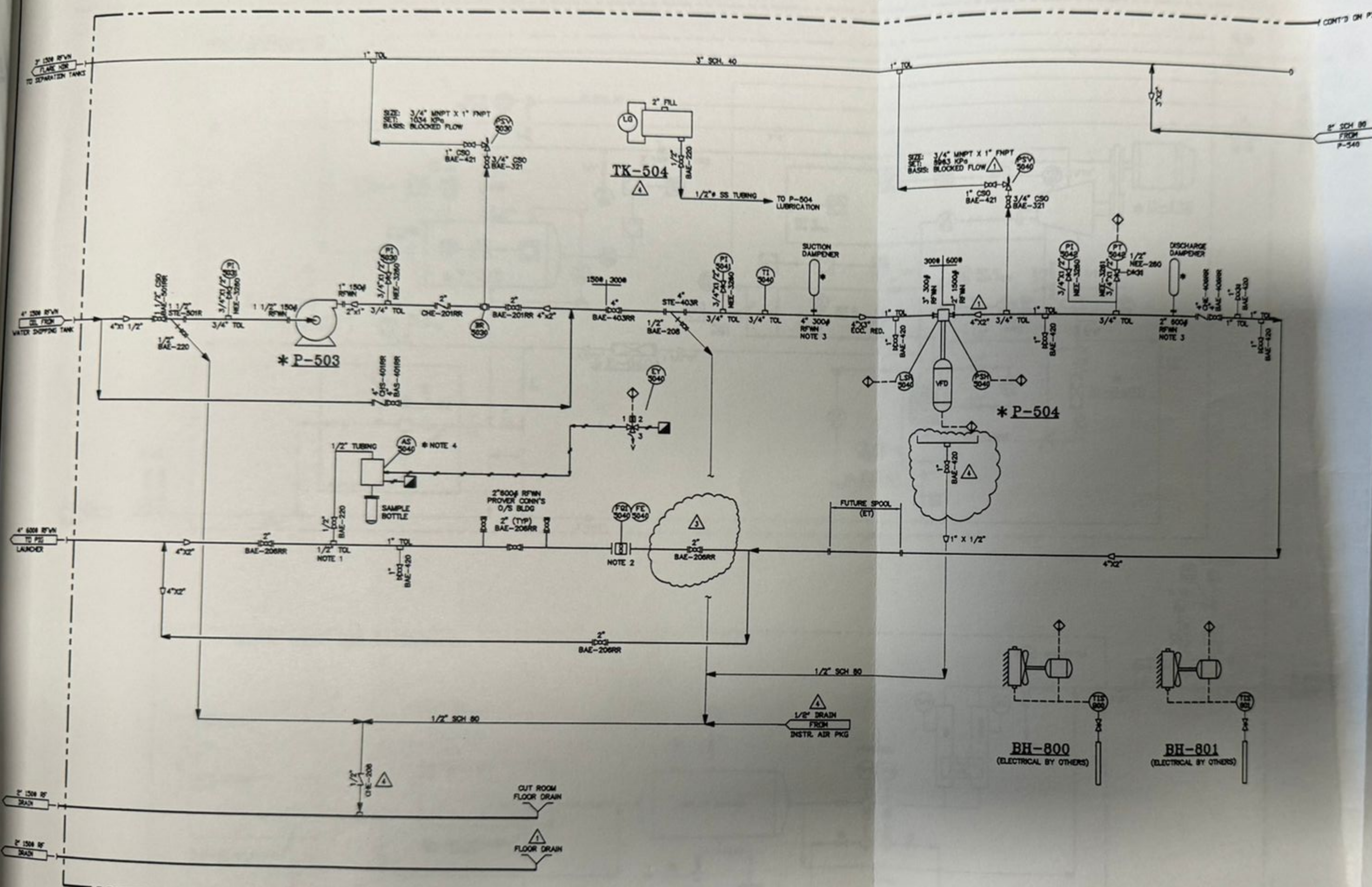
MAKE: KENCO
MODEL: 190-38
CAPACITY: 15 GAL. C/W 5'-0" STAND AND LEVEL GAUGE

*** P-504
OIL SHIPPING PUMP**

MAKE: NATIONAL OILWELL
MODEL: 587-34
MOTOR: WESTINGHOUSE 40 HP, 324T 480/3/70
S.F.: 1.15
RATE (MAX): 58 USOM @ 90.33 MP/H

**BH-800/801
BUILDING HEATER**

MAKE: RUFFHECK
MODEL: TX-412-480350-10
ACCESSORIES: THERMOSTATS, DIPL. PROOF
XT-111, 120V



TAG#	QTY	DESCRIPTION
BR-5030	1	2" 150# RF, 2" DIA, C/W 3/4" O/T, SA-016-T04
AS-5040	1	REDUCING AUTO SAMPLE SYSTEM
ET-5040	1	1/4" NPT ABCO E78300202 3-WAY SOLIDNO SWITING VALVE, 24 VDC, DPL. PROOF
FG-5040	1	2" 1 1/2" 800# RF HALLIBURTON C2-W TURBINE METER C/W MAGNETIC PICK-UP COUPLING RINGS, PICK-UP ADAPTER EXTENSION AND WC-1 TOTALIZER
FE-5040	1	1/2" DIA. WKA 233.54 PRESSURE INDICATOR, DUAL UNIT, LIQUID FILLED
LSH-5040	1	1/2" DIA. WKA 233.54 PRESSURE INDICATOR, DUAL UNIT, LIQUID FILLED
PI-5030	1	1/2" DIA. WKA 233.54 PRESSURE INDICATOR, DUAL UNIT, LIQUID FILLED
PI-5031	1	1/2" DIA. WKA 233.54 PRESSURE INDICATOR, DUAL UNIT, LIQUID FILLED
PI-5041	1	1/2" DIA. WKA 233.54 PRESSURE INDICATOR, DUAL UNIT, LIQUID FILLED
PI-5042	1	1/2" DIA. WKA 233.54 PRESSURE INDICATOR, DUAL UNIT, LIQUID FILLED
PSH-5040	1	1/2" DIA. WKA 233.54 PRESSURE INDICATOR, DUAL UNIT, LIQUID FILLED
PSV-5030	1	3/4" NPT X 1" NPT CROSBY 9811010A SAFETY RELIEF VALVE, PRIMARY ZONE, SET @ 150# (LIQUID)
PSV-5040	1	3/4" NPT X 1" NPT CROSBY 9811010A SAFETY RELIEF VALVE, PRIMARY ZONE, SET @ 80# (LIQUID)
PT-5042	1	ROSEMOUNT GAUGE PRESSURE TRANSMITTER 321104A2B2A4C 24 VDC, CALIBRATION 0-12,000 KPA, 0-500# RANGE
T-5040	1	TREND SOURCE TEMPERATURE INDICATOR, 3" DIA FACE X 2 1/2" STEM -40 TO 40 °C, 1/2" X 3/4" X 2 1/2" DIA. 316 SS
BAE-501RR	1	1 1/2" 150# RF REG. PORT BALL VALVE, KF-0214-1922291
BAE-409RR	1	4" 600# RF REG. PORT BALL VALVE, KF-0206-31211
BAE-403RR	1	4" 300# RF REG. PORT BALL VALVE, KF-0205-1922291
BAE-401RR	1	4" 150# RF REG. PORT BALL VALVE, KF-0205-1922291
BAE-209RR	5	2" 600# RF REG. PORT BALL VALVE, KF-0205-31211
BAE-201RR	1	2" 150# RF REG. PORT BALL VALVE, KF-0210-1922291
BAE-421	2	1" NPT BALL VALVE, FLOW CONTROL, 130-HP-1, 200# WOL. CSO
BAE-430	5	1" NPT BALL VALVE, FLOW CONTROL, 130-HP-1, 200# WOL. CSO
BAE-321	2	3/4" NPT BALL VALVE, FLOW CONTROL, 130-HP-1, 200# WOL. CSO
BAE-220	4	1/2" NPT BALL VALVE, FLOW CONTROL, 130-HP-1, 200# WOL. CSO
CHE-409RR	1	4" 600# RF SWING CHECK VALVE, WHEATLEY 910-04614-101
CHE-401RR	1	4" 150# RF SWING CHECK VALVE, WHEATLEY 910-04622-101
CHE-201RR	1	2" 150# RF SWING CHECK VALVE, WHEATLEY 910-02502-101
CHE-208	1	1/2" NPT SWING CHECK VALVE, WHEATLEY 920-30202-131
HEE-3281	1	3/4" NPT X 1/2" NPT NEEDLE VALVE, AGO WVS-48, AGO WVS-48
HEE-3280	4	3/4" NPT X 1/2" NPT NEEDLE VALVE, AGO WVS-48
HEE-380	1	1/2" NPT X 1/2" NPT NEEDLE VALVE, AGO WVS-440
STE-508R	2	1 1/2" 150# RF Y-STRAINER, ALTA STRAINER, 17150, NACE
STE-403R	2	4" 300# RF Y-STRAINER, ALTA STRAINER, 17300, NACE

- NOTES:**
1. TAKE OFF ON SIDE OF PIPE.
 2. MINIMUM STRAIGHT PIPE REQ'D 30" UPSTREAM & 10" DOWNSTREAM.
 3. DAMPENERS TO BE MOUNTED ON HUB FLD OR BLIND FLD C/W 1 1/4" O/T.
 4. "S" DENOTES INSTRUMENT SUPPLIED BY CUSTOMER, INSTALLED BY ORBAM.
 5. INSTRUMENT TUBING: 3/8" 316SS C/W SWAGelok 316 SS FITTINGS.

(1) REQ'D
TIME CARD
02-026-PPS

REV.	DESCRIPTION	APP'D	DATE	BY	DATE
AS BUILT					02-05-02
ADDED ISOLATION BALL VALVE		ET	02-04-01	KS	02-04-01
REVISED AS NOTED		ET	02-03-28	CS	02-03-28
GENERAL REVISION		ET	02-03-21	CS	02-03-21
ISSUED FOR APPROVAL		ET	02-03-08	CS	02-03-08

ORBAM INDUSTRIES LTD.
CALGARY, ALBERTA

DATE: 02-03-08
SCALE: N.T.S.

JOARCAM BATTERY 11-13-50-22 W4M
MECHANICAL FLOW DIAGRAM FOR
OIL PUMPS
(SWEET SERVICE)

ENERMARK INC.
c/o TUXILA GAS ENGINEERING LTD. 02-026-D

BILL OF MATERIAL

TAG#	QTY	DESCRIPTION
BR-5030	1	2" 150# RF, 2" THK. C/W 3/4" D/T. SA-516-70M
AS-5040	1	REMTRONIC AUTO SAMPLE SYSTEM
EY-5040	1	1/4" NPT ASCO EF8320G202 3-WAY SOLENOID SWITCHING VALVE, 24 VDC EXPL. PROOF
FQI-5040 FE-5040	1	2" X 1 1/2" 800# RF HALLIBURTON E2-IN TURBINE METER C/W MAGNETIC PICK-UP CENTERING RINGS, PICK-UP ADAPTER EXTENSION AND MC-II TOTALIZER, M3/DAY REGISTER
LSH-5040	1	---
PI-5030	1	4" DIAL WKA 233.54 PRESSURE INDICATOR, DUAL UNIT, LIQUID FILLED 1/2" BOTTOM CONNECTION, 0-200 PSIG RANGE
PI-5031	1	4" DIAL WKA 233.54 PRESSURE INDICATOR, DUAL UNIT, LIQUID FILLED 1/2" BOTTOM CONNECTION, 30HG TO 0-15 PSIG RANGE
PI-5041	1	4" DIAL WKA 233.54 PRESSURE INDICATOR, DUAL UNIT, LIQUID FILLED 1/2" BOTTOM CONNECTION, 0-300 PSIG RANGE
PI-5042	1	4" DIAL WKA 233.54 PRESSURE INDICATOR, DUAL UNIT, LIQUID FILLED 1/2" BOTTOM CONNECTION, 0-2000 PSIG RANGE
PSH-5040	1	---
PSV-5030	1	3/4" MNPT X 1" FNPT CROSBY 961101MA SAFETY RELIEF VALVE, PRIMARY ZONE, SET @ 1034 KPa (LIQUID)
PSV-5040	1	3/4" MNPT X 1" FNPT CROSBY 961101MA SAFETY RELIEF VALVE, PRIMARY ZONE, SET @ 8963 KPa (LIQUID)
PT-5042	1	ROSEMOUNT GAUGE PRESSURE TRANSMITTER 3051TG4A2B21AB4C8 24 VDC, CALIBRATION 0-12,000 KPa, 0-4000# RANGE
TI-5040	1	TREND 50025 TEMPERATURE INDICATOR, 5" DIAL FACE X 2 1/2" STEM -40 TO 40 °C, 1/2" X 3/4" X 2 1/2" LG, 316 SS
BAE-501RR	1	1 1/2" 150# RF REG. PORT BALL VALVE, KF-E2149-1922291
BAE-408RR	1	4" 800# RF REG. PORT BALL VALVE, KF-B2805-2U211
BAE-403RR	1	4" 300# RF REG. PORT BALL VALVE, KF-E2305-1922291
BAE-401RR	1	4" 150# RF REG. PORT BALL VALVE, KF-E2155-1922291
BAE-208RR	6	2" 800# RF REG. PORT BALL VALVE, KF-B2800-2U211
BAE-201RR	1	2" 150# RF REG. PORT BALL VALVE, KF-E2150-1922291
BAE-421	2	1" NPT BALL VALVE, FLOW CONTROL 13C-HP-1, 2000# WOG, CSO
BAE-420	6	1" NPT BALL VALVE, FLOW CONTROL 13C-HP-1, 2000# WOG
BAE-321	2	3/4" NPT BALL VALVE, FLOW CONTROL 13C-HP-1, 2000# WOG, CSO
BAE-220	4	1/2" NPT BALL VALVE, FLOW CONTROL 13C-HP-1, 2000# WOG
CHE-408RR	1	4" 800# RF SWING CHECK VALVE, WHEATLEY 910-048144-101
CHE-401RR	1	4" 150# RF SWING CHECK VALVE, WHEATLEY 910-045027-101
CHE-201RR	1	2" 150# RF SWING CHECK VALVE, WHEATLEY 910-025027-101
CHE-208	1	1/2" NPT SWING CHECK VALVE, WHEATLEY 820-503027-131
NEE-3261	1	3/4" MNPT X 1/2" FNPT NEEDLE VALVE C/W BLOCK AND BLEED, AGCO M8VIS-46
NEE-3260	4	3/4" MNPT X 1/2" FNPT NEEDLE VALVE, AGCO M8VIS-46
NEE-260	1	1/2" MNPT X 1/2" FNPT NEEDLE VALVE, AGCO H7VC-44Q
STE-501R	2	1 1/2" 150# RF Y-STRAINER, ALTA STRAINER, YF150, NACE
STE-403R	2	4" 300# RF Y-STRAINER, ALTA STRAINER, YF300, NACE

NOTES:

1. TAKE OFF ON SIDE OF PIPE.
2. MINIMUM STRAIGHT PIPE REQ'D 20" UPSTREAM & 10" DOWNSTREAM.
3. DAMPENERS TO BE MOUNTED ON HUB FLG OR BLIND FLG C/W 1 1/4" D/T.
4. "Φ" DENOTES INSTRUMENT SUPPLIED BY CUSTOMER, INSTALLED BY ORBAN.
5. INSTRUMENT TURNING:
3/8" 316SS C/W SWAGelok 316 SS FITTINGS.

CONT'D ON PID-01

2" SCH 80
FROM
P-540

BAE-420
1" NPT
BAE-420

PLA

JAL

***V-340
INLET SEPARATOR**
SIZE: 24" O.D. X 5'-9" S/S
DESIGN: 175 PSIG @ 232°C
RADIOGRAPHY: RT-2
PMT: N/R

***C-102
COMPRESSOR**
MAKE: LEROI
MODEL: 61010H-F
MOTOR: WEG 30 HP

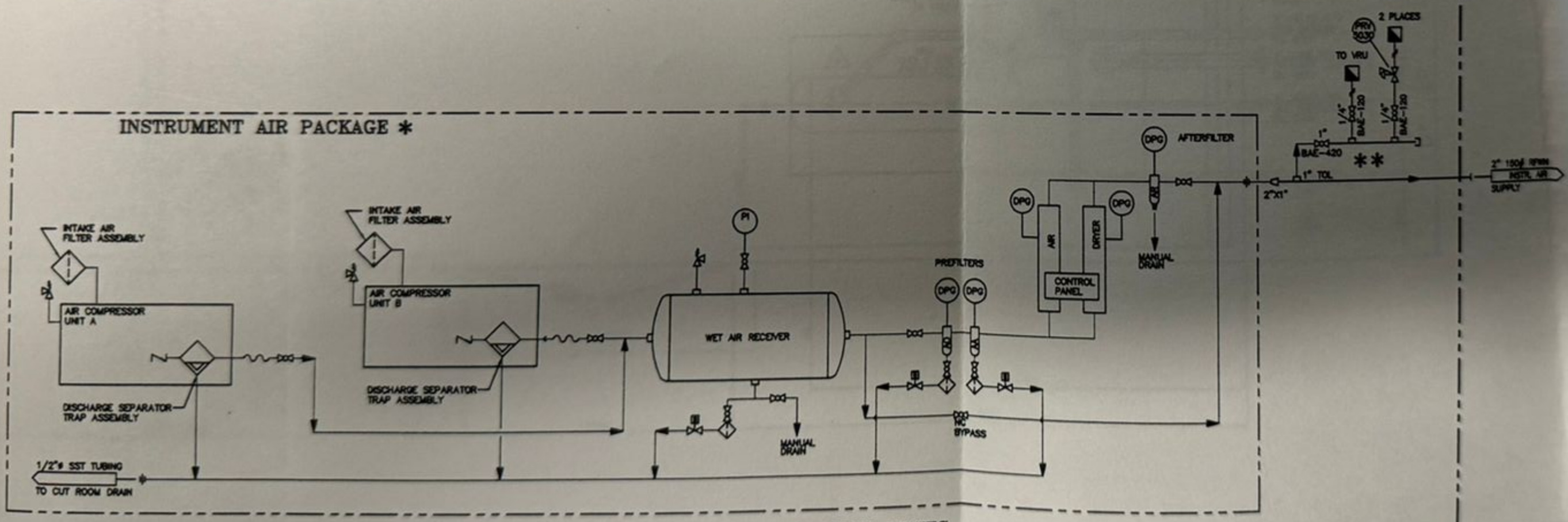
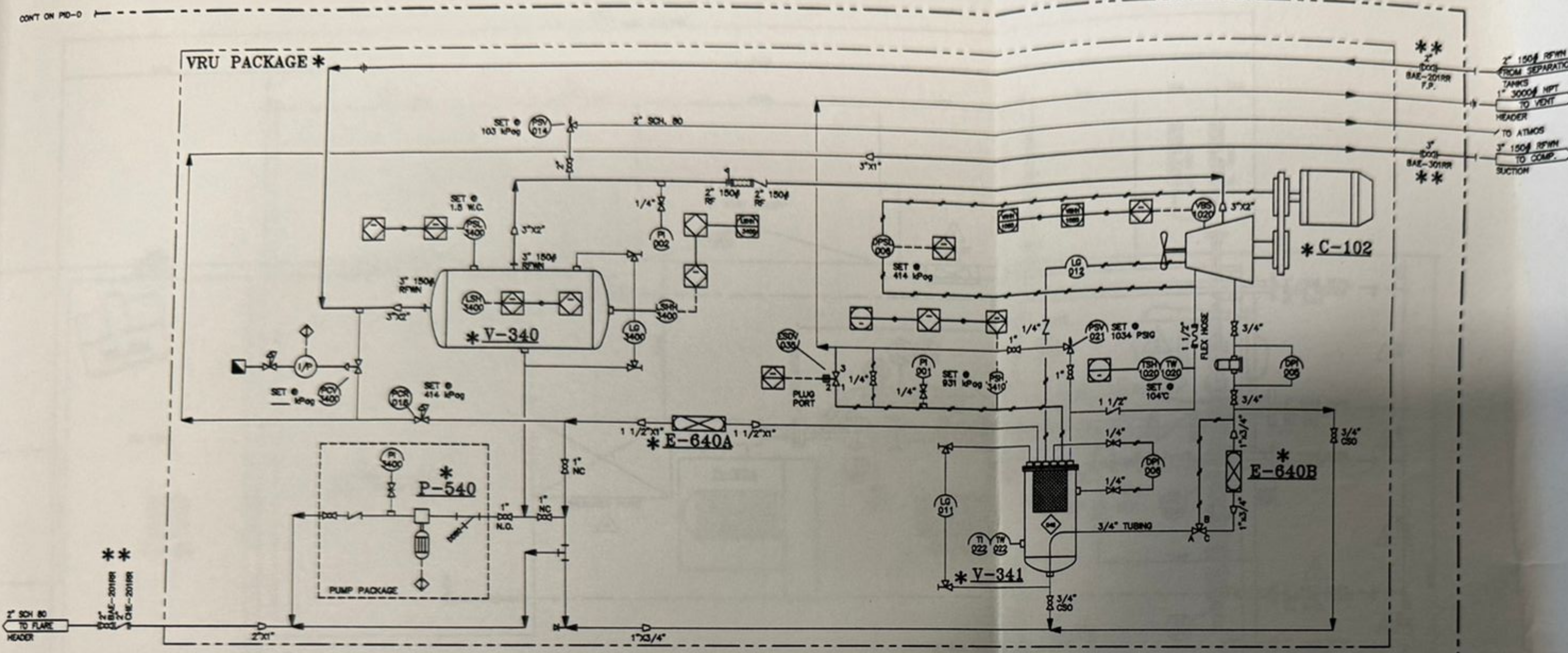
***P-540
SUCTION PUMP**
MAKE: HYDRA-CELL
MODEL:
MOTOR: 2 HP, 480V/3 PHASE/60 HZ

***V-341
OIL/GAS SEPARATOR**
SIZE: 14" O.D. X 2'-9" S/S
DESIGN: 48 PSIG @ 343°C
RADIOGRAPHY: RT-2
PMT: N/R

***E-640A/640B
COMBINED OIL COOLER / GAS COOLER**
SIZE:
DESIGN:
RADIOGRAPHY:
PMT:

BILL OF MATERIAL		
TAG#	QTY	DESCRIPTION
PRV-5030	2	1/4" NPT FISHER 67 APR REGULATOR, 5-36 PSIG SPRING RANGE, (RECOND.)
BAE-201RR	1	3" 150# RF REG. PORT BALL VALVE, KF-E2153-1922291
BAE-201RF	1	2" 150# RF FULL PORT BALL VALVE, KF-E2151-1922291
CHE-201RR	1	2" 150# RF SWING CHECK VALVE, WHEATLEY 910-025027-101
BAE-420	1	1" NPT BALL VALVE, FLOW CONTROL, 130-HP-1, 2000# WOG
BAE-120	3	1/4" NPT BALL VALVE, FLOW CONTROL, 130-HP-1, 2000# WOG

- NOTES:**
1. "S" DENOTES SUPPLIED BY CUSTOMER, INSTALLED BY ORBAN.
 2. "R" DENOTES SUPPLIED BY ORBAN, INSTALLED BY ORBAN.
 3. ALL INSTRUMENT AIR LINE TO BE GALVANIZED.



ORBAN INDUSTRIES LTD.
CALGARY, ALBERTA

DATE: 02-03-19
SCALE: N.T.S.

JOARCAM BATTERY 11-13-50-22 W4M
MECHANICAL FLOW DIAGRAM FOR
OIL PUMPS
(SWEET SERVICE)

ENERMARK INC
c/o TUXELA GAS ENGINEERING LTD.

01-026-D1

REV.	DESCRIPTION	DATE	BY	DATE

ISSUED FOR APPROVAL
PROJECT CO-ORDINATOR CHECKED: DATE

(1) REQ'D
TIME CARD
01-026-PPS

CONT ON PD-0

CONT ON PD-0

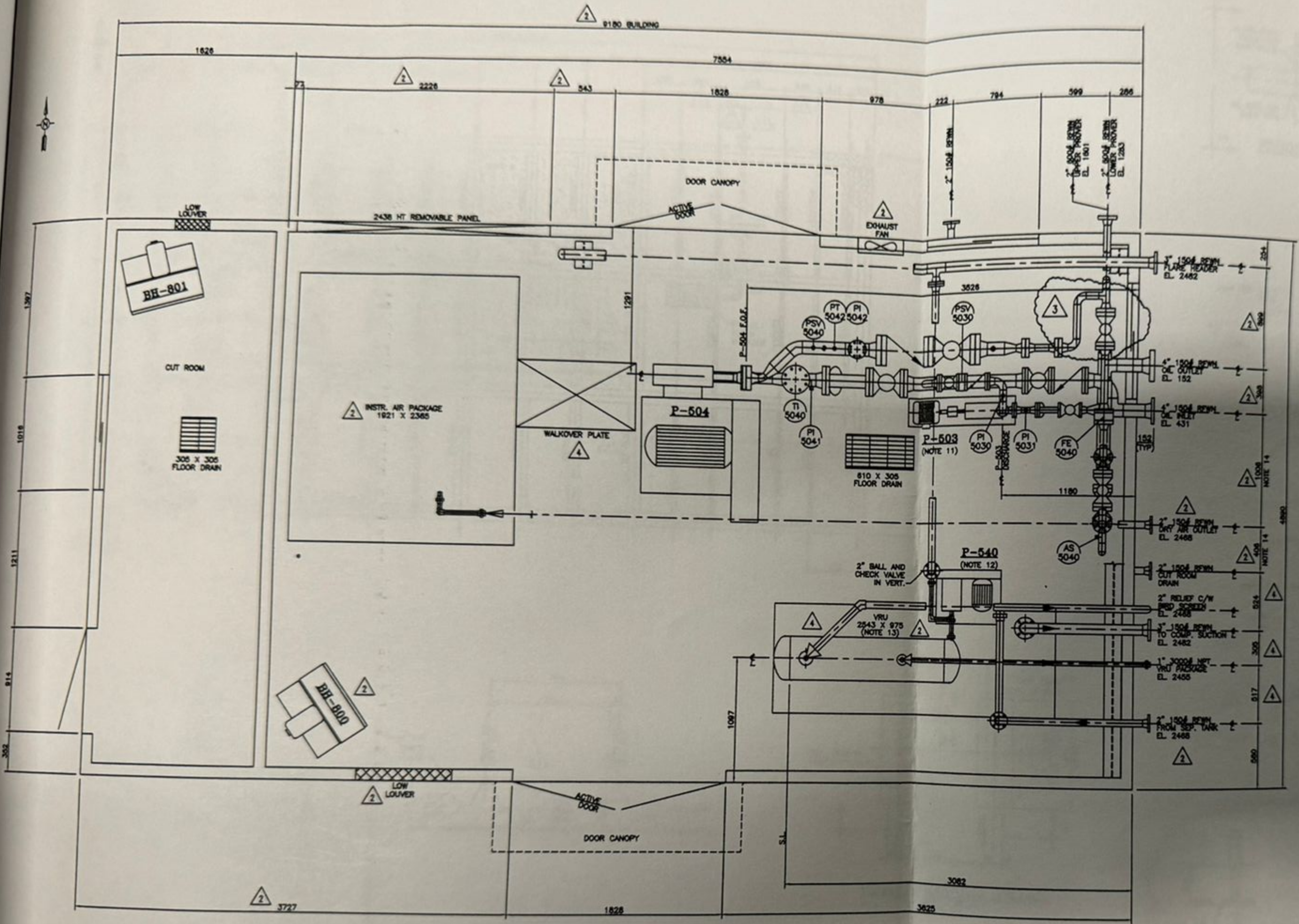
BUILDING LIMITS

BILL OF MATERIAL		
TAG#	QTY	DESCRIPTION
PRV-5030	2	1/4" NPT FISHER 87 AFR REGULATOR, 5-35 PSIG SPRING RANGE, (RECOND.)
BAE-301RR	1	3" 150# RF REG. PORT BALL VALVE, KF-E2153-1922291
BAE-201RR	1	2" 150# RF REG. PORT BALL VALVE, KF-E2150-1922291
BAE-201RF	1	2" 150# RF FULL PORT BALL VALVE, KF-E2151-1922291
CHE-201RR	1	2" 150# RF SWING CHECK VALVE, WHEATLEY 910-025027-101
BAE-420	1	1" NPT BALL VALVE, FLOW CONTROL 13C-HP-1, 2000# WOG
BAE-120	3	1/4" NPT BALL VALVE, FLOW CONTROL 13C-HP-1, 2000# WOG

NOTES:

1. "*" DENOTES SUPPLIED BY CUSTOMER, INSTALLED BY ORBAN.
2. "#*" DENOTES SUPPLIED BY ORBAN, INSTALLED BY ORBAN.
3. ALL INSTRUMENT AIR LINE TO BE GALVANIZED.

RFWN
 REPARATION
 NPT
 VENT
 S
 RFWN
 P.



GENERAL NOTES:

- THIS DRAWING TO BE READ IN CONJUNCTION WITH THE MECHANICAL FLOW DIAGRAM.
- ALL ELEVATIONS ARE REF. FROM TOP OF CHECKERED PLATE.
- ALL PIPING TO BE HELD TO DIMENSIONS & ELEVATIONS SHOWN FOR CUSTOMER TIE-IN.
- MAIN PIPING TO BE BUILT IN ACCORDANCE WITH THE LATEST EDITION OF B31.1.
- ALL BUTTWELDED 0.625 CLA. PIPING TO BE:
 600 ANS: 2", 3", 4" - SCH 80
 150 ANS: 3", 4" - SCH STD
 150 ANS: 2" - SCH 80
- MATERIALS:
 PIPING - SA-1098 SMLS
 FLANGES - SA-1098
 FITTINGS - SA-234-HPB
 BOLTS - SA-193-B7
 NUTS - SA-194-BH
 RF GASKETS - 30408 FLDITALLIC
- ALL THREAD PIPING TO BE SCH 80 SA-1098 SMLS PIPE
 C/W 30004 SA-1098 SCREWED FITTINGS (EXCEPT AS NOTED IN ITEM 8)
- FIRST PIPE/PIPE/SWAGE OFF VESSEL HPT CONNECTIONS TO BE
 SCH 80 FOR 150 ANS RATING; SCH 150 FOR 600 ANS RATING
- BUILDING:
 DIM: 18'-0" 1/2" W X 28'-1 3/8" L X 10'-0" EAVE, GABLE STYLE WITH 4:12 SLOPE
 22 GAUGE BOME (OC 273) WHITE WITH BLUE (PENTONE 3845) TRIM EXTERIOR WALLS AND ROOF
 R-12 FIBREX 12-40 INSULATION IN WALLS R-20 FIBREX 12-40 INSULATION IN ROOF
 6" HR VAPOR BARRIER THROUGHOUT
 24 GAUGE FLUTED ALUMINUM INTERIOR LINER IN CUT ROOM WITH 20 GAUGE PERFORATED
 ALUMINUM IN LARGER ROOM ABOVE 7'-0"
 (1) 8'-0" X 7'-0" STEEL DOUBLE HANDBOOK WITH LOCKING PANO HARDWARE, TNG WINDOK,
 CHECK CHAIN, HYDRAULIC CLOSURE ON ACTIVE LEAF, BARREL BOLTS ON INACTIVE LEAF,
 HEATHERSTRIPPING, ALUMINUM THRESHOLD, AND CANOPY
 (1) 3'-0" X 7'-0" STEEL HANDBOOK WITH LOCKING PANO HARDWARE, TNG WINDOK,
 CHECK CHAIN, HYDRAULIC CLOSURE, HEATHERSTRIPPING, ALUMINUM THRESHOLD, AND CANOPY
 (1) 12" VENTURE EXPLOSION PROOF EXHAUST FAN 120V/1PH/90HZ C/W
 HOOD AND SACKROAST DAMPER
 CONTINUOUS EXHAUSTION AND DOWNSPOUTS
 ICE RAKES AT LOWER EAVES
 (2) 40" X 40" DOUBLE GLAZED WINDOWS WITH 1/2 SCREWS
 FULL HEIGHT INTERIOR PARTITION INSULATED AND LINED ON BOTH FACES
 (1) 12" X 12" MANUALLY OPERATED STAMPED LOUVERS WITH HOOD AND FILTER
 IN CUT ROOM
 (1) 18" X 32" MANUALLY OPERATED STAMPED LOUVERS WITH HOOD AND FILTER
 IN LARGER ROOM (FOR AIR INTAKE)
- UNIT TO BE MECHANICALLY CLEANED TO SSPC-SP3 PRIOR TO:
 ONE(1) COAT OF ZINC CHROMATE PRIMER
 TWO(2) COATS OF FINISH ENAMEL PAINT
 VESSEL: WARM GREY
 PIPING: WARM GREY
 SKID FLOOR: WARM GREY
 PIPE SUPPORTS: WARM GREY
- ALL BUTTWELDED PIPING SHALL BE 10% (NORMAL) RADIOGRAPHICALLY
 INSPECTED AND NOT PRINT.
- ORIGAN TO SUPPLY SUPPORTS TO MAINTAIN PUMP SUCTION ELEVATION
 OF 431.
- ORIGAN TO SUPPORT PUMP TO LEVEL PUMP SUCTION & VRU PACKAGE DRAIN.
- INSTALL 6" WIDE FLANGE UNDER VRU SKID SADDLE SUPPORTS.
- ACTUAL LOCATION TO BE CONFIRMED AFTER INSTALLATION OF INSTRUMENT AIR PACKAGE.
- ALL PIPING SHALL BE HYDROTESTED TO 1.5 TIMES THE DESIGN PRESSURE.
- ALL PIPE SUPPORT LOCATIONS TO BE DETERMINED BY SHOP.
- ALL UNION LOCATIONS TO BE DETERMINED BY SHOP.
- UNIT IS REGISTERED FOR ALBERTA SERVICE.
- SHIPPING DIMENSION: 18'-6" W X 30'-0" L X 15'-0" H.
- SHIPPING WEIGHT: 55,000 LBS.

(1) REQ'D
 TIME CARD
 02-026-PPW

REV.	DESCRIPTION	APP'D	DATE	BY	DATE
AS BUILT		ET	02-04-01	KS	02-05-02
ADDED ISOLATION BALL VALVE		ET	02-03-19	TS	02-03-19
REVISED AS NOTED		ET	02-03-14	TS	02-03-14
REVISED AS PER CUSTOMER MARK-UP		ET	02-02-21	KS	02-02-21
ISSUED FOR CONSTRUCTION					
PROJECT CO-ORDINATOR CHECKED:	DATE:				

ORBAN INDUSTRIES LTD.
 CALGARY, ALBERTA

DESIGN BY: TS
 CHECKED BY: KS

DATE: 02-02-21
 SCALE: 1:20

JOARCAM BATTERY 11-13-50-22 W4M
OIL PUMP SKID PACKAGE
(SWEET SERVICE)

ENERMARK INC.
 c/o TUXILA GAS ENGINEERING LTD.

02-026-E

GENERAL NOTES:

1. THIS DRAWING TO BE READ IN CONJUNCTION WITH THE MECHANICAL FLOW DIAGRAM.
2. ALL ELEVATIONS ARE REF. FROM TOP OF CHECKERED PLATE.
3. ALL PIPING TO BE HELD @ DIMENSIONS & ELEVATIONS SHOWN FOR CUSTOMER TIE-INS.
4. MAIN PIPING TO BE BUILT IN ACCORDANCE WITH THE LATEST EDITION OF B31.3.
5. ALL BUTTWELDED 0.0825 C.A. PIPING TO BE:

600 ANSI: 2", 3", 4" - SCH 80
 150 ANSI: 3", 4" - SCH STD
 150 ANSI: 2" - SCH 80

MATERIALS:

PIPING - SA-108B SMLS
 FLANGES - SA-105N
 FITTINGS - SA-234-WPB
 BOLTS - SA-193-B7
 NUTS - SA-194-2H
 RF GASKETS - 304SS FLEXITALLIC

6. ALL THREAD PIPING TO BE SCH 80 SA-108B SMLS PIPE
 C/W 3000# SA-105N SCREWED FITTINGS. (EXCEPT AS NOTED IN ITEM #7)

7. FIRST PIPE/NIPPLE/SWAGE OFF VESSEL NPT CONNECTIONS TO BE
 SCH 80 FOR 150 ANSI RATING; SCH 160 FOR 600 ANSI RATING

8. BUILDING:

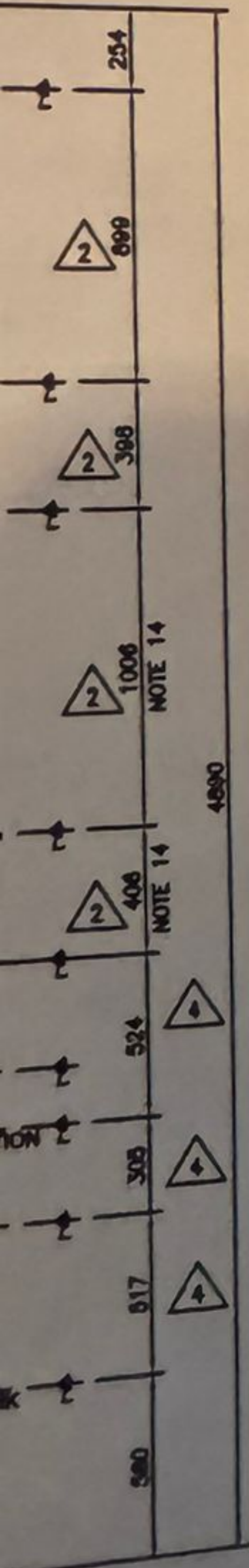
DIM.: 18'-0" 1/2" W X 28'-1 3/8" LG X 10'-0" EAVE, GABLE STYLE WITH 4:12 SLOPE
 22 GAUGE BONE (QC 273) WHITE WITH BLUE (PENTONE 2945) TRIM EXTERIOR WALLS AND ROOF
 R-12 FIBREX 12-40 INSULATION IN WALLS R-20 FIBREX 12-40 INSULATION IN ROOF
 6 mil VAPOR BARRIER THROUGHOUT
 24 GAUGE FLUTED ALUMINUM INTERIOR LINER IN CUT ROOM WITH 20 GAUGE PERFORATED
 ALUMINUM IN LARGER ROOM ABOVE 3'-0"
 (2) 8'-0" X 7'-0" STEEL DOUBLE MANDOR WITH LOCKING PANIC HARDWARE, IWG WINDOW,
 CHECK CHAIN, HYDRAULIC CLOSURES ON ACTIVE LEAVES, BARREL BOLTS ON INACTIVE LEAVES,
 WEATHERSTRIPPING, ALUMINUM THRESHOLD, AND CANOPY
 (1) 3'-0" X 7'-0" STEEL MANDOR WITH LOCKING PANIC HARDWARE, IWG WINDOW,
 CHECK CHAIN, HYDRAULIC CLOSURE, WEATHERSTRIPPING, ALUMINUM THRESHOLD, AND CANOPY
 (1) 12" VENTURI EXPLOSION PROOF EXHAUST FAN 120V/1PH/60HZ C/W
 HOOD AND BACKDRAFT DAMPER
 CONTINUOUS EAVESTROUGH AND DOWNSPOUTS
 ICE RAKES AT LOWER EAVES
 (2) 40" X 40" DOUBLE GLAZED WINDOWS WITH 1/2 SCREENS
 FULL HEIGHT INTERIOR PARTITION, INSULATED AND LINED ON BOTH FACES
 (1) 12" X 12" MANUALLY OPERATED STAMPED LOUVERS WITH HOOD AND FILTER
 IN CUT ROOM
 (1) 18" X 32" MANUALLY OPERATED STAMPED LOUVERS WITH HOOD AND FILTER
 IN LARGER ROOM (FOR AIR INTAKE)

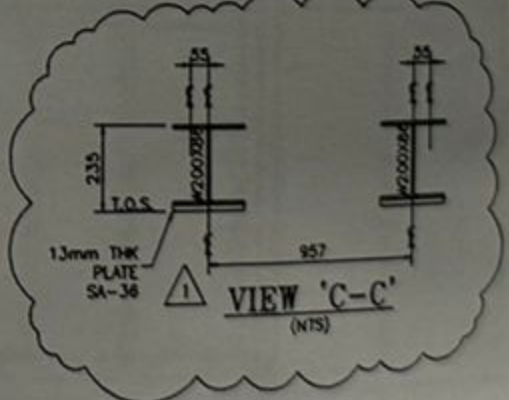
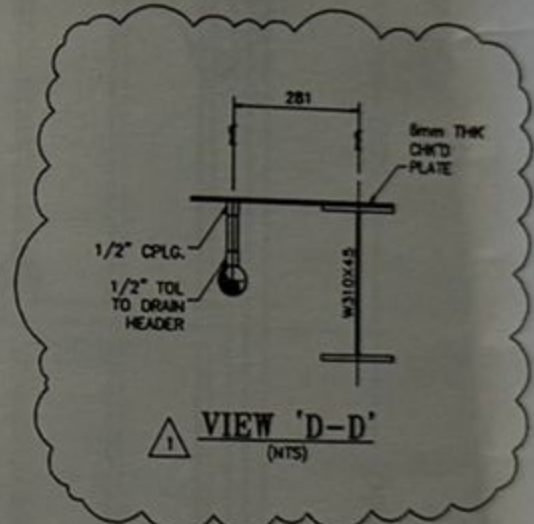
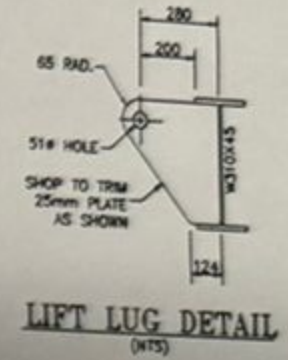
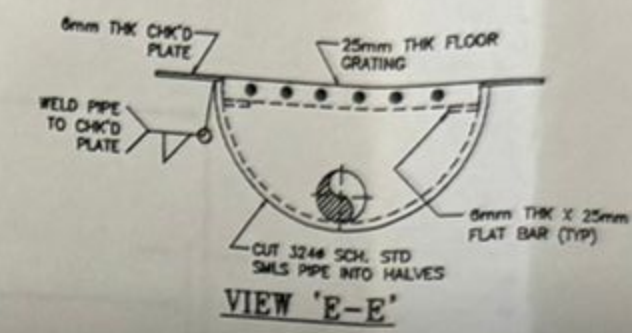
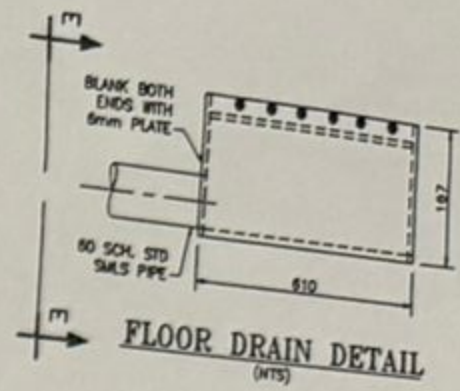
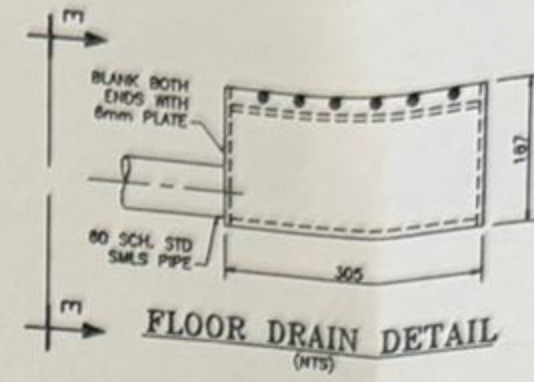
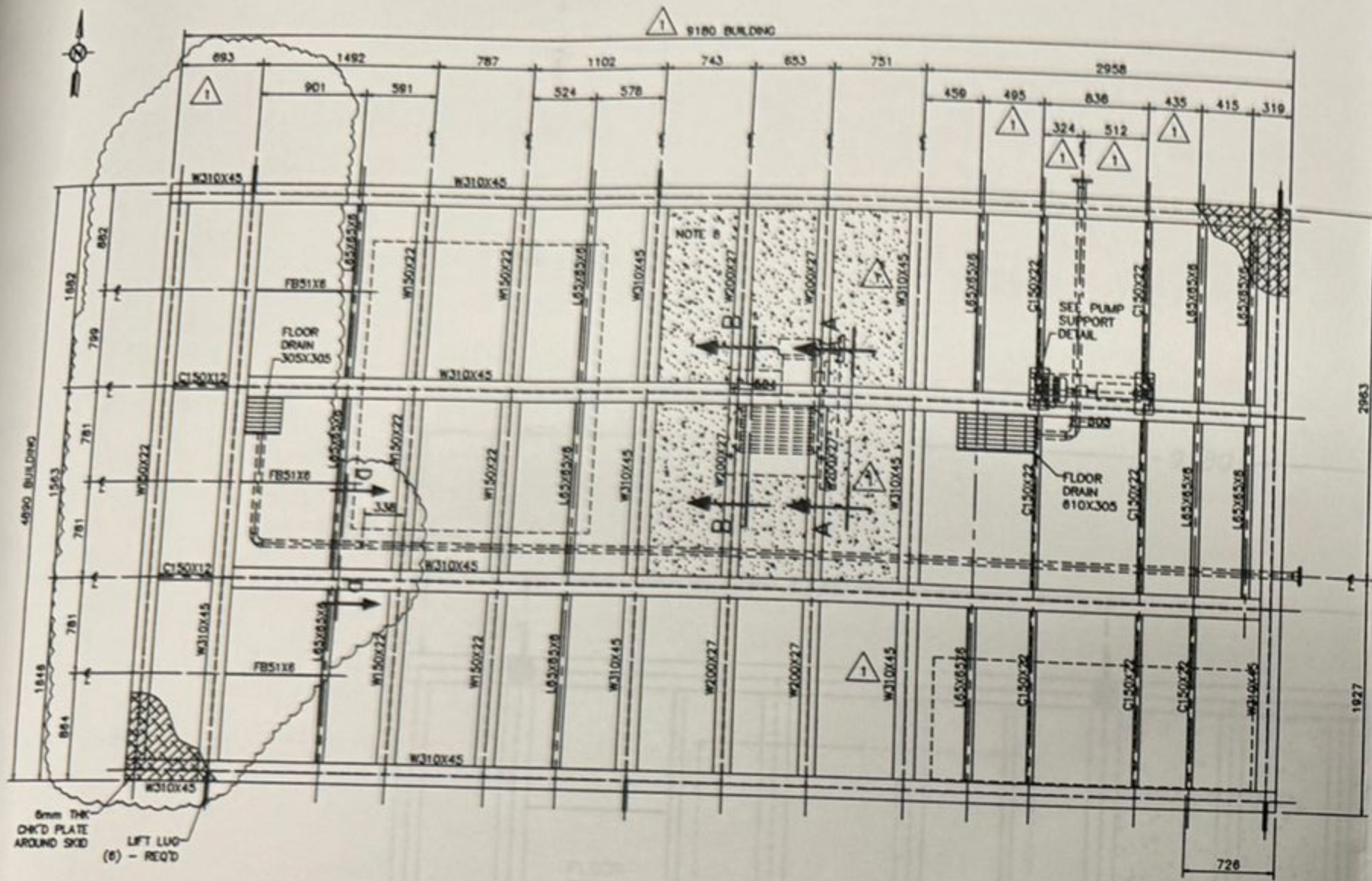
9. UNIT TO BE MECHANICALLY CLEANED TO SSPC-SP3 PRIOR TO:

ONE(1) COAT OF ZINC CHROMATE PRIMER
 TWO(2) COATS OF FINISH ENAMEL PAINT

VESSEL: WARM GREY
 PIPING: WARM GREY
 SKID FLOOR: WARM GREY
 PIPE SUPPORTS: WARM GREY

10. ALL BUTTWELDED PIPING SHALL BE 10% (NORMAL) RADIOGRAPHICALLY
 INSPECTED AND NOT PWMT.
11. ORBAN TO SUPPLY SUPPORTS TO MAINTAIN PUMP SUCTION ELEVATION
 OF 431.
12. ORBAN TO SUPPORT PUMP TO LEVEL PUMP SUCTION & VRU PACKAGE DRAIN.
13. INSTALL 6" WIDE FLANGE UNDER VRU SKID SADDLE SUPPORTS.
14. ACTUAL LOCATION TO BE CONFIRMED AFTER INSTALLATION OF INSTRUMENT AIR PACKAGE.
15. ALL PIPING SHALL BE HYDROTESTED TO 1.5 TIMES THE DESIGN PRESSURE.
16. ALL PIPE SUPPORT LOCATIONS TO BE DETERMINED BY SHOP.
17. ALL UNION LOCATIONS TO BE DETERMINED BY SHOP.
18. UNIT IS REGISTERED FOR ALBERTA SERVICE.
19. SHIPPING DIMENSION: 18'-6" W X 30'-0" LG X 15'-0" H.
20. SHIPPING WEIGHT: 55,000 LBS.





GENERAL STRUCTURAL STEEL NOTES:

- THIS DRAWING TO BE READ IN CONJUNCTION WITH THE PIPING PLAN DRAWING No. 02-026-E.
- ALL DIMENSIONS ARE IN MILLIMETERS UNLESS NOTED. ALL ELEVATIONS ARE REFERRED FROM TOP OF SKID FLOOR.
- ALL WORK SHALL GENERALLY CONFORM TO THE LATEST EDITIONS OF THE FOLLOWING CODES AND STANDARDS:
CSA 947.1-92
CISC HANDBOOK OF STEEL CONSTRUCTION
- ALL STEEL SHALL BE OF NEW STOCK AND SHALL BE IN ACCORDANCE WITH CSA 942.2-94. STRUCTURAL STEEL SHALL GRADE 300K. PLATE MATERIAL SHALL BE 44K, EXCEPT CHECKERED PLATE TO BE A-36.
- WELDING SHALL BE IN GENERAL CONFORMANCE WITH CSA W59-1988. FILLER METAL SHALL CONFORM TO CSA STD. W48.5-88 - E480C-8-CH. WELDS TO BE 6mm CONTINUOUS FILLET WELD UNLESS NOTED. USE ORBAN WELDING PROCEDURE AS SHOWN IN WELDING DETAILS.
- CHECKERED PLATED SEAMS TO BE WELDED CONTINUOUSLY ON ONE SIDE. STITCH WELD TO SKID USING 3mm FILLETS 50mm AT 300mm INTERVALS.
- CLEAN ALL STEEL SURFACES PRIOR TO PAINTING TO SSPC-SP3 "MECHANICALLY CLEANED".
- CONCRETE TO BE REINFORCED WITH REBAR.
- UNDERSIDE OF BUILDING AREA SHALL BE INSULATED WITH 2" URETHANE.
- STRUCTURAL STEEL SKID IS DESIGNED TO 6-POINT LIFT.
- WEIGHT OF STRUCTURAL STEEL SKID (INCLUDING 2" URETHANE INSULATION) IS APPROX. 20,000 LBS.

MAR 26 2002

ORBAN INDUSTRIES LTD.
CALGARY, ALBERTA

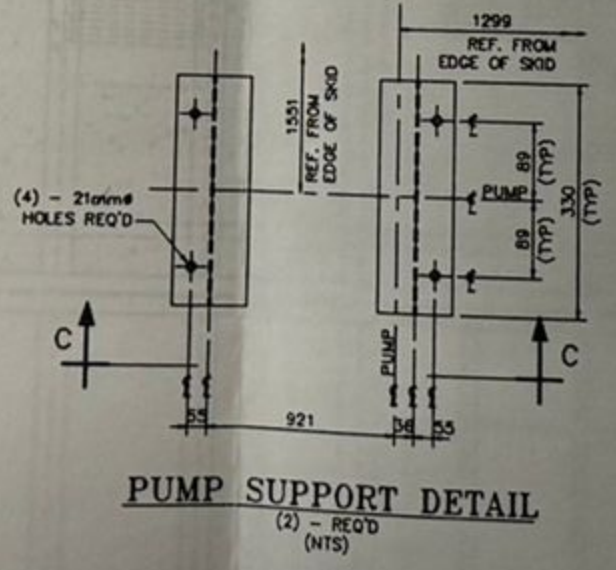
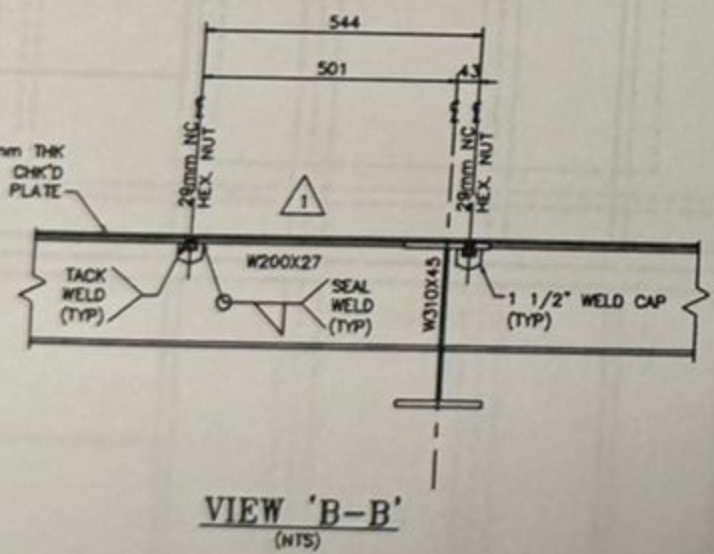
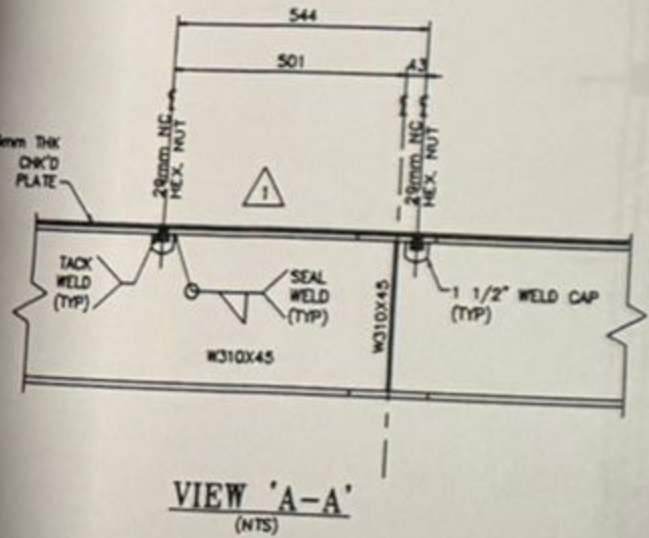
DESIGNED BY: TS
CHECKED BY: KS

DATE: 02-03-12
SCALE: 1:30

JORCAM BATTERY 11-13-50-22 W4M
STRUCTURAL STEEL FOR OIL PUMP
SKID PACKAGE (SWEET SERVICE)

ENERMARK INC.
c/o TUTTLE GAS ENGINEERING LTD.

02-026-F



WELD DETAILS				
1. BEAM CONN.	2. INTERIOR BEAM CONN.	3. WT/CHANNEL CONN.	4. ANGLE CONN.	5. LIFT LUG CONN.
WPDS - B-LIB-FC/FZ	WPDS - F1/F2	WPDS - F1/F2	WPDS - F1/F2	WPDS - F2

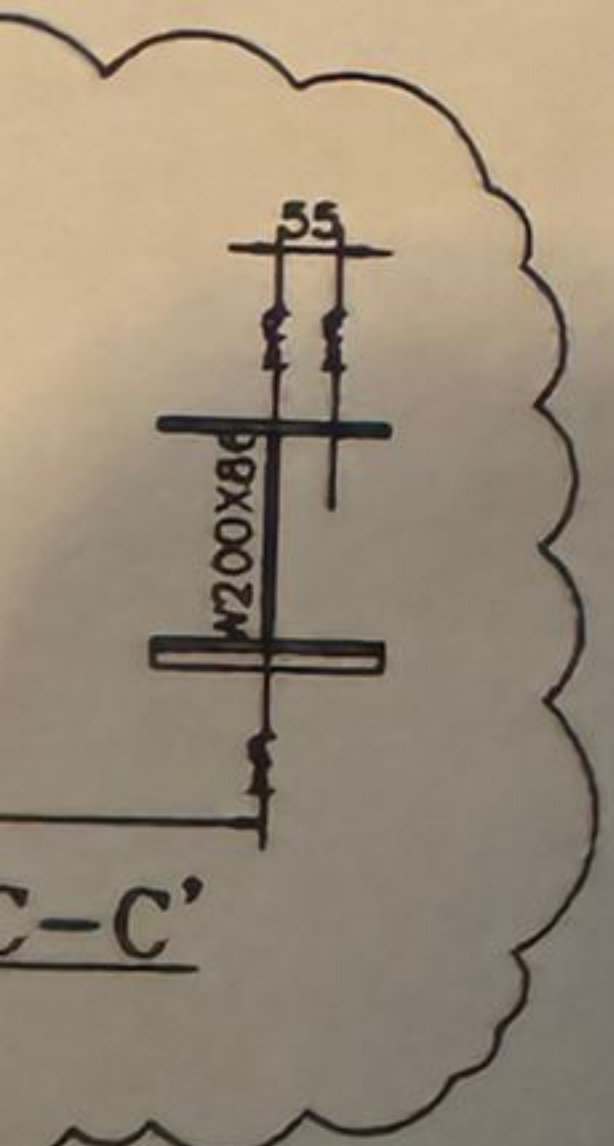
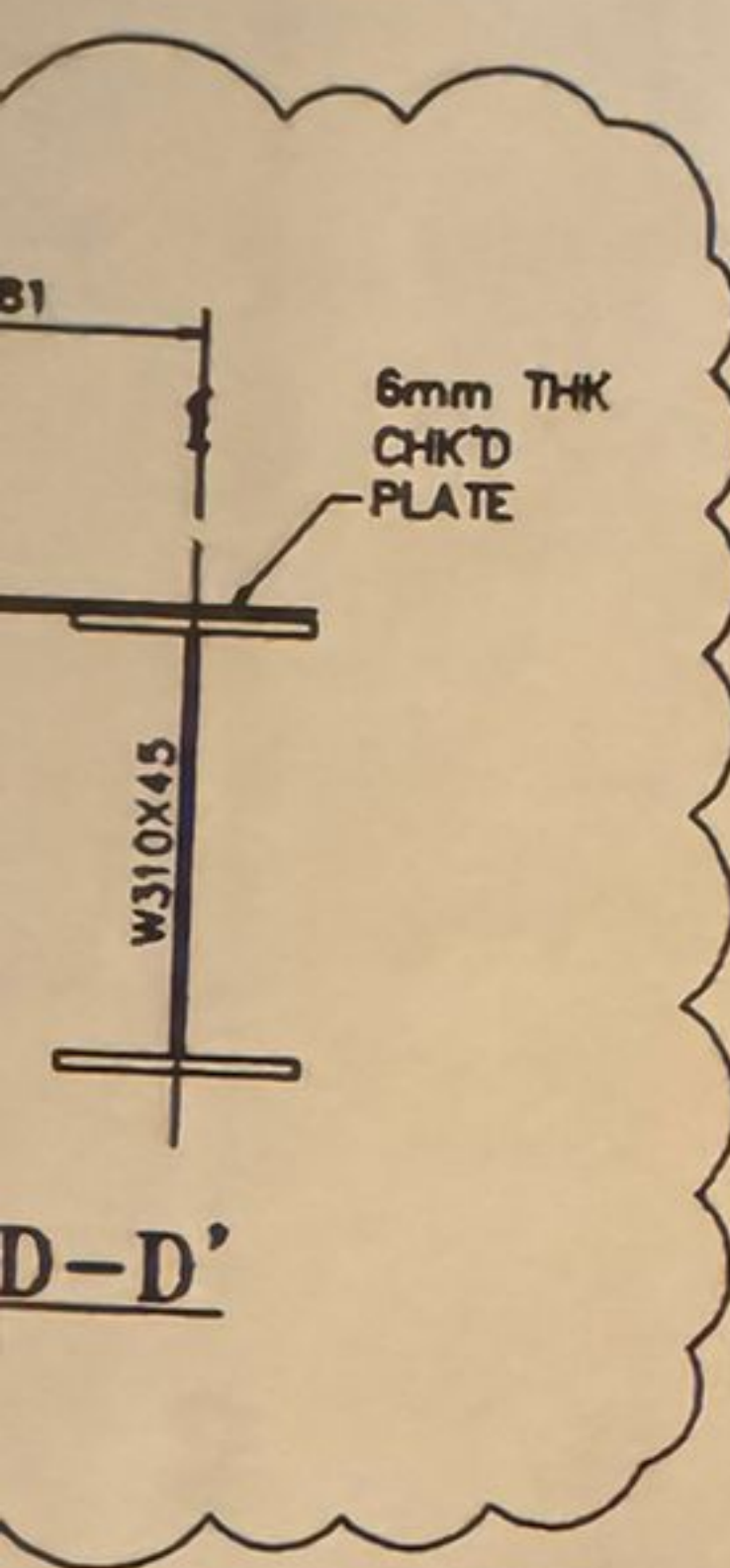
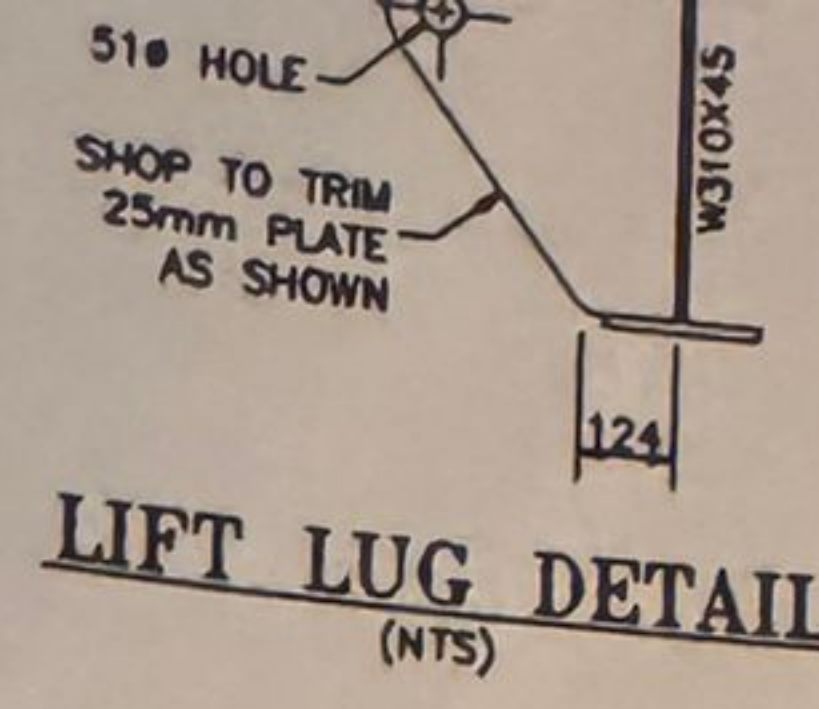
(1) REQ'D
TIME CARD
02-026-SK

REV.	DESCRIPTION	APP'D.	DATE	BY	DATE
1	REVISED AS NOTED	TS	02-03-12	TS	02-03-12
2	ISSUED FOR CONSTRUCTION	TS	02-03-12	TS	02-03-12

PROJECT CO-ORDINATOR CHECKED: DATE:

CUT 3240 SCH. STD
SMLS PIPE INTO HALVES
VIEW 'E-E'

6mm THK X 25mm
FLAT BAR (TYP)



GENERAL STRUCTURAL STEEL NOTES:

1. THIS DRAWING TO BE READ IN CONJUNCTION WITH THE PIPING PLAN DRAWING No. 02-026-E.
2. ALL DIMENSION ARE IN MILLIMETERS UNLESS NOTED. ALL ELEVATIONS ARE REFERED FROM TOP OF SKID FLOOR.
3. ALL WORK SHALL GENERALLY CONFORM TO THE LATEST EDITIONS OF THE FOLLOWING CODES AND STANDARDS:
CSA W47.1-92
CISC HANDBOOK OF STEEL CONSTRUCTION
4. ALL STEEL SHALL BE OF NEW STOCK AND SHALL BE IN ACCORDANCE WITH CSA G40.21-M. STRUCTURAL STEEL SHALL GRADE 300W. PLATE MATERIAL SHALL BE 44W. EXCEPT CHECKERED PLATE TO BE A-36.
5. WELDING SHALL BE IN GENERAL CONFORMANCE WITH CSA W59-1989. FILLER METAL SHALL CONFORM TO CSA STD. W48.5-M - E4802C-6-CH. WELDS TO BE 6mm CONTINUOUS FILLET WELD UNLESS NOTED. USE ORBAN WELDING PROCEDURE AS SHOWN IN WELDING DETAILS.
6. CHECKERED PLATED SEAMS TO BE WELDED CONTINUOUSLY ON ONE SIDE. STITCH WELD TO SKID USING 5mm FILLETS 50mm AT 300mm INTERVALS.
7. CLEAN ALL STEEL SURFACES PRIOR TO PAINTING TO SSPC-SP3 "MECHANICALLY CLEANED".
8. CONCRETE TO BE REINFORCED WITH REBAR.
9. UNDERSIDE OF BUILDING AREA SHALL BE INSULATED WITH 2" URETHANE.
10. STRUCTURAL STEEL SKID IS DESIGNED TO 6-POINT LIFT.
11. WEIGHT OF STRUCTURAL STEEL SKID (INCLUDING 2" URETHANE INSULATION) IS APPROX. 20,000 LBS

MAR 26 2002

ORBAN INDUSTRIES LTD.
CALGARY, ALBERTA

DRAWN BY: TS
CHECKED BY: KS

DATE: 02-03-12
SCALE: 1:30

JORCAM BATTERY 11-13-50-22 W4M
STRUCTURAL STEEL FOR OIL PUMP
SKID PACKAGE (SWEET SERVICE)

ENERMARK INC.
o/o TUXTLA GAS ENGINEERING LTD.

02-026-F

REV.

02-03-12	TS	02-03-12
DATE	BY	DATE

