

MATERIAL LIST					
ITEM NO.	QTY.	DESCRIPTION	MANUFACTURER	CATALOG NO.	SEE SUPPLIER
1	AS REQD	LIGHT FIXTURE (2x4)	GRUPE-HMS	CA141011	1704 CONTRACTOR
2	-	LIGHT FIXTURE (2x4)	GRUPE-HMS	CA141011	1704
3	-	LIGHT FIXTURE 1/2x LAMP (2x4)	APLICON	DM10141	1704
4	-	LAMP (2x4)	GE OR OSRAM	48W 1/2x4	45 REQD
5	-	LAMP (2x4)	GE OR OSRAM	48W 1/2x4	45 REQD
6	-	FIXTURE HANGER	GRUPE-HMS	CA141011	1/2"
7	-	FIXTURE FLUX	-	104P 204	1/2" x 4"
8	-	OUTLET W/CONDUIT/GASKET	-	1.2 1795	45 REQD
9	-	OUTLET W/CONDUIT/GASKET	-	1.2 1795	45 REQD
10	-	OUTLET BOX	-	104B 38-54	1"
11	-	OUTLET BOX	-	104B 38-54	1/2"
12	-	OUTLET BOX	-	104B 38-54	1/2"
13	-	OUTLET BOX	-	104B 38-54	1/2"
14	-	OUTLET BOX	-	104B 38-54	1/2"
15	-	OUTLET BOX	-	104B 38-54	1/2"
16	-	SEALING COVER	-	104 38-54/2	7 QTY
17	-	CONDUIT SEAL	-	175 28-54	1/2"
18	-	CONDUIT SEAL	-	175 28-54	1/2"
19	-	CONDUIT JOINT	-	104-54 795	45 REQD
20	-	CONDUIT JOINT	-	104-54 795	45 REQD
21	-	CONDUIT JOINT	-	104-54 795	45 REQD
22	-	CONDUIT JOINT	-	104-54 795	45 REQD
23	-	CONDUIT JOINT	-	104-54 795	45 REQD
24	-	SWITCH	-	104S 212	1/2"
25	-	RECEPTACLE (FACTORY SEALS)	-	104S 212	1/2" 200A
26	-	RECEPTACLE (FACTORY SEALS)	-	104S 212	1/2" 200A
27	-	RECEPTACLE (FACTORY SEALS)	-	104S 212	1/2" 200A
28	-	RECEPTACLE (FACTORY SEALS)	-	104S 212	1/2" 200A
29	-	RECEPTACLE (FACTORY SEALS)	-	104S 212	1/2" 200A
30	-	RECEPTACLE (FACTORY SEALS)	-	104S 212	1/2" 200A
31	-	RECEPTACLE (FACTORY SEALS)	-	104S 212	1/2" 200A
32	-	RECEPTACLE (FACTORY SEALS)	-	104S 212	1/2" 200A
33	-	RECEPTACLE (FACTORY SEALS)	-	104S 212	1/2" 200A
34	-	RECEPTACLE (FACTORY SEALS)	-	104S 212	1/2" 200A
35	-	RECEPTACLE (FACTORY SEALS)	-	104S 212	1/2" 200A
36	-	RECEPTACLE (FACTORY SEALS)	-	104S 212	1/2" 200A
37	-	RECEPTACLE (FACTORY SEALS)	-	104S 212	1/2" 200A
38	-	RECEPTACLE (FACTORY SEALS)	-	104S 212	1/2" 200A
39	-	RECEPTACLE (FACTORY SEALS)	-	104S 212	1/2" 200A
40	-	RECEPTACLE (FACTORY SEALS)	-	104S 212	1/2" 200A
41	-	RECEPTACLE (FACTORY SEALS)	-	104S 212	1/2" 200A
42	-	RECEPTACLE (FACTORY SEALS)	-	104S 212	1/2" 200A
43	-	RECEPTACLE (FACTORY SEALS)	-	104S 212	1/2" 200A
44	AS REQD	PLUG LIGHT	GRUPE-HMS	170C 101A-1	1/2" CONTRACTOR
45	3	TERMINAL	-	-	-
46	2	GAS DETECTOR	GENERAL MONITORS	14000-1-0-01	-
47	2	GAS DETECTOR SEPARATION KIT	GENERAL MONITORS	14000-1	-
48	1	UV RAY DETECTOR	GENERAL MONITORS	14000-1-0-01	-
49	1	MOUNTING BRACKET	GENERAL MONITORS	14000-1	-
50	AS REQD	ALUMINUM CABLE TRAY (21 BAYS)	FLUORIN OR EQUAL	3004A-20-6	300mm CONTRACTOR
51	-	ALUMINUM CABLE TRAY (21 BAYS)	FLUORIN OR EQUAL	3004A-20-6	100mm
52	-	ALUMINUM CABLE TRAY (21 BAYS)	FLUORIN OR EQUAL	3004A-20-6	100mm
53	-	ALUMINUM CABLE TRAY (21 BAYS)	FLUORIN OR EQUAL	3004A-20-6	100mm
54	-	HORIZONTAL ELBOW	-	1004A-20-6	45 REQD
55	-	OUTSIDE VERTICAL 90	-	1004A-20-6	45 REQD
56	-	HORIZONTAL TEE	FLUORIN OR EQUAL	3004A-20-6	45 REQD
57	-	FLEXIBLE COUPLING	GRUPE-HMS	104-110	1/2"
58	-	HEAT TRACE POWER KIT	RAYCHEM	85-100-A	-
59	AS REQD	HEAT TRACE END KIT 1/2x RED LIGHT	RAYCHEM	100-42-A	200-275 CONTRACTOR
60	-	-	-	-	-

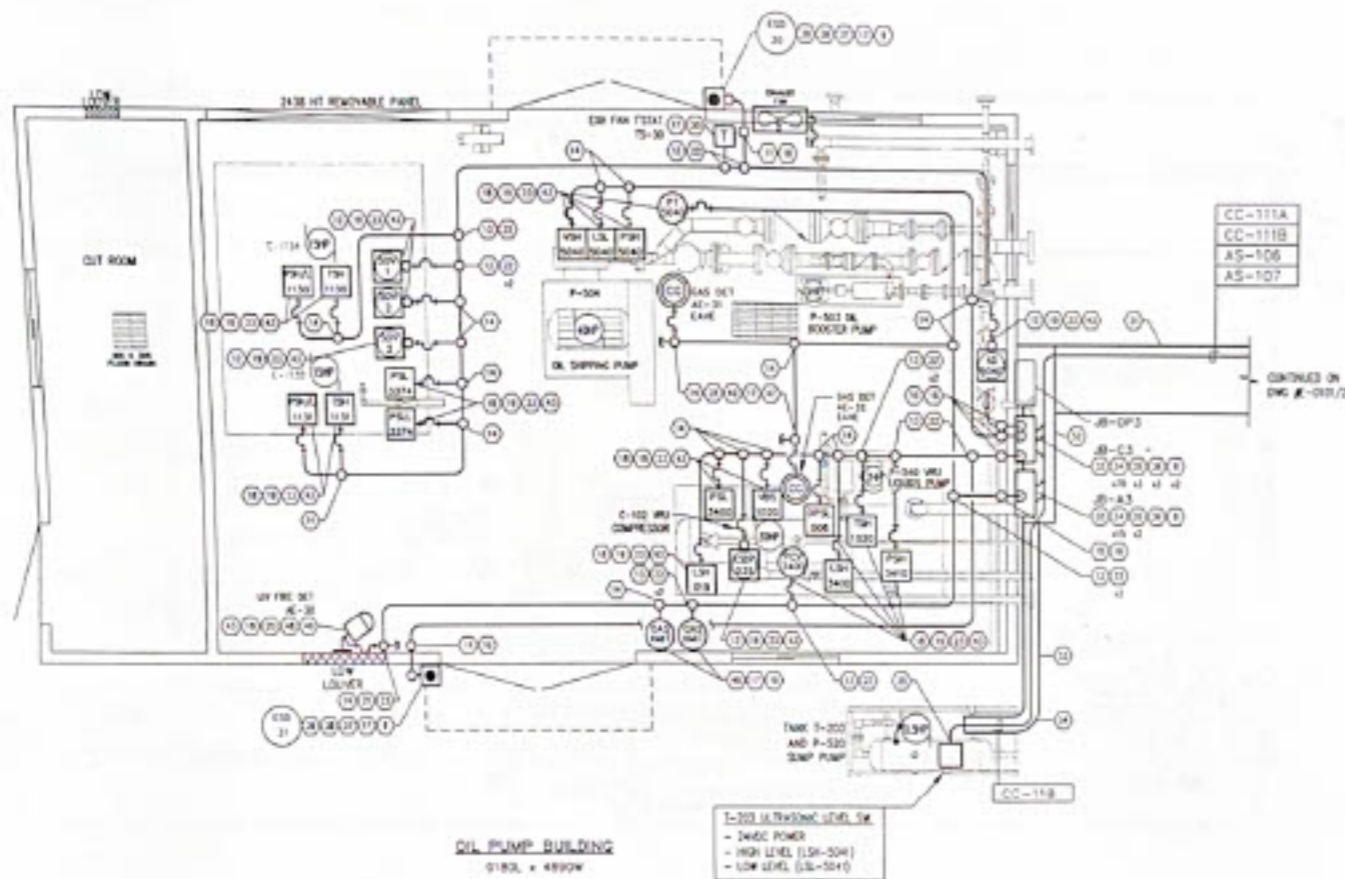
FOR DETAILED HEAT TRACING DESCRIPTION SEE DWG #C-0101/2

NOTE: A. ALL MATERIALS SHOWN ARE A GUIDE ONLY AND IT IS THE CONTRACTOR'S RESPONSIBILITY TO CHECK ALL CATALOGUE NUMBERS BEFORE ORDERING.
B. CONTRACTOR TO SIZE, SUPPLY AND INSTALL ALL OVERLOAD HEATERS AS REQD.

AS BUILT
 Tactile
 EnerMark Inc.
 JOARCAM 11-13 BATTERY
 LSD 11-13-50-22 W4M
 OIL PUMP BLDG - ELECTRICAL LAYOUT

GENERAL NOTES	REFERENCE DRAWINGS		REVISIONS		PERMIT	SEAL	
	NUMBER	FILE	NO.	DESCRIPTION			BY
CABLE TO BE INSTALLED AT ORIGIN AND DESTINATION USING MIN 10' SAG AND SUPPORT BY WRAPS OR EQUIPMENT. TERMINALS TO BE IDENTIFIED AT ORIGIN AND DESTINATION USING PNC OR SLICES. CONDUIT AND CABLE TO BE SUPPORTED BY ALL BUILDING WALLS THROUGH USING UNIDRIFT CHANNELS AND STRAPS. MIN DISTANCE BETWEEN CONDUIT SUPPORTS TO BE 1.5 METERS. CONDUIT AND CABLE TO BE RUN WORK OUT CONDUIT SLICES. CONDUIT AND CABLE TO BE APPROXIMATE LOCATIONS ONLY. UNDERGROUND CONDUITS AND CABLES SHALL BE PROTECTED USING 400MM PLUMBING AND WATER TAP.			1	ISSUED FOR CONSTRUCTION	WBT	10/18/18	J.S.
			2	AS BUILT	WBT	12/18/18	S.O.

DATE	DATE	NO.	NO.
10/18/18	02/03/20	1	1
12/18/18		2	2



MATERIAL LIST

ITEM NO.	QTY	DESCRIPTION	MANUFACTURER	CATALOG No.	SIZE	SUPPLIER
1	AS REQD	LIGHT FIXTURE (24")	GRUPE-HANS	142700071	170W	CONTRACTOR
2	-	LIGHT FIXTURE (24")	GRUPE-HANS	142700071	170W	-
3	-	LIGHT FIXTURE (24") LAMP (250)	APPLICON	142700071	250W	-
4	-	LAMP (24")	GE OR OSRAM	142700071	AS REQD	-
5	-	LAMP (24")	GE OR OSRAM	142700071	AS REQD	-
6	-	FIXTURE HANGER	GRUPE-HANS	142700071	3/4"	-
7	-	FIXTURE GUY	-	142700071	3/4" x 8'	-
8	-	OUTLET BULB/COVER GASKET	-	142700071	AS REQD	-
9	-	OUTLET BULB/COVER GASKET	-	142700071	AS REQD	-
10	-	OUTLET BOX	-	142700071	1/2"	-
11	-	OUTLET BOX	-	142700071	1/2"	-
12	-	OUTLET BOX	-	142700071	1/2"	-
13	-	OUTLET BOX	-	142700071	1/2"	-
14	-	OUTLET BOX	-	142700071	1/2"	-
15	-	OUTLET BOX	-	142700071	1/2"	-
16	-	SEALING CONE	-	142700071	2" Ø	-
17	-	CONDUIT SEAL	-	142700071	3/4"	-
18	-	CONDUIT SEAL	-	142700071	1/2"	-
19	-	CONDUIT UNION	-	142700071	AS REQD	-
20	-	CONDUIT ELBOW	-	142700071	AS REQD	-
21	-	CONDUIT ELBOW	-	142700071	AS REQD	-
22	-	CONDUIT REDUCER	-	142700071	1" - 3/4"	-
23	-	CONDUIT REDUCER	-	142700071	3/4" - 1/2"	-
24	-	SWITCH SWITCH	-	142700071	3/4"	-
25	-	RECEPTACLE (FACTORY SEALS)	-	142700071	1/2" Ø	-
26	-	WALL MOUNTED SWITCH	-	142700071	3/4" Ø	-
27	-	SWITCH SWITCH (2 WAY)	GRUPE-HANS	142700071	3/4"	-
28	-	N.C. CONTROL STATION	ALLEN BRADLEY	142700071	3/4"	-
29	-	HIGH FLANGE SEAL KIT & GASKET	ALLEN BRADLEY	142700071	-	-
30	-	WATERPROOF	WATERPROOF	-	-	-
31	-	JUNCTION BOX (24" x 24" x 4")	HANSON	142700071	17" x 17"	-
32	-	JUNCTION BOX (24" x 24" x 4")	HANSON	142700071	17" x 17"	-
33	-	JUNCTION BOX (24" x 24" x 4")	HANSON	142700071	17" x 17"	-
34	-	TERMINAL BLOCK (24" x 24" x 4")	WATERPROOF	142700071	24"	-
35	-	W. BOX CONNECTOR	T & B	142700071	AS REQD	-
36	-	WATERPROOF HUB	WATERPROOF	-	AS REQD	-
37	-	W. BOX POSITIONING	ALLEN BRADLEY	142700071	1" Ø	-
38	-	CONTACT BLOCK	ALLEN BRADLEY	142700071	NC	-
39	-	INDICATOR	ALLEN BRADLEY	142700071	3/4"	-
40	-	SELECTOR SWITCH (24" x 24" x 4")	GRUPE-HANS	142700071	2" Ø	-
41	-	LIQUID TIGHT FLEX (24" x 24" x 4")	T & B	-	-	-
42	-	FLEXIBLE COUPLING	-	142700071	3/4" x 1/2"	-
43	-	FLEXIBLE COUPLING	-	142700071	1/2" x 1/4"	-
44	AS REQD	PILOT LIGHT	GRUPE-HANS	142700071	3/4"	CONTRACTOR
45	3	TERMINAL	-	-	-	OWNER
46	2	GAS DETECTOR	GENERAL MONITORS	142700071	-	OWNER
47	2	GAS DETECTOR SEPARATION KIT	GENERAL MONITORS	142700071	-	OWNER
48	1	UV FIRE DETECTOR	FLUOR	142700071	24" Ø	OWNER
49	1	WARNING BELL	GENERAL MONITORS	142700071	-	OWNER
50	AS REQD	ALUMINUM CABLE TRAY (24" x 24")	FLUOR OR EQUAL	142700071	300mm	CONTRACTOR
51	-	ALUMINUM CABLE TRAY (24" x 24")	-	142700071	300mm	-
52	-	ALUMINUM CABLE TRAY (24" x 24")	-	142700071	300mm	-
53	-	ALUMINUM CABLE TRAY (24" x 24")	-	142700071	300mm	-
54	-	HORIZONTAL ELBOW	-	142700071	AS REQD	-
55	-	OUTSIDE VERTICAL 90	-	142700071	AS REQD	-
56	-	HORIZONTAL TEE	FLUOR OR EQUAL	142700071	AS REQD	-
57	AS REQD	FLEXIBLE COUPLING	GRUPE-HANS	142700071	1/2"	CONTRACTOR
58	-	-	-	-	-	-
59	-	-	-	-	-	-
60	-	-	-	-	-	-

NOTE: A. ALL MATERIALS SHOWN ARE A GUIDE ONLY AND IT IS THE CONTRACTOR'S RESPONSIBILITY TO CHECK ALL CATALOGUE NUMBERS BEFORE ORDERING.
 B. CONTRACTOR TO SIZE, SUPPLY AND INSTALL ALL OVERLOAD HEATERS AS REQD.

OCT 01 2002

AS BUILT

PREPARED BY: STYON THOMAS INC. LTD.
 PROJECT NO. 01-054
 FILE NO. 01050-0003C

GENERAL NOTES

- ALL CONDUIT OR CABLE TO BE IDENTIFIED AT ORIGIN AND DESTINATION USING ALUMINUM OR STAINLESS STEEL WRAPS OR EQUIVALENT.
- ALL CONDUITS TO BE IDENTIFIED AT ORIGIN AND DESTINATION USING PVC STRIPS 3/4" x 1/2".
- ALL CONDUIT AND END DEVICES TO BE SUPPORTED BY ALL BUILDING WALLS AND CEILING USING UNIDUTY CHANNEL AND STRAPS.
- MINIMUM DISTANCE BETWEEN CONDUIT SUPPORTS TO BE 1.5 METERS.
- CONDUIT AND END DEVICES TO BE RUN FROM OUT CONDUIT RACKS.
- ALL END DEVICES SHOWN ARE IN APPROXIMATE LOCATIONS ONLY.
- ALL UNDERGROUND CONDUITS AND CABLES SHALL BE PROTECTED USING TRIPLE WOOD PLANKING AND WARRNER TAPE.

NUMBER	DATE	BY	CHKD.	DESCRIPTION	REVISIONS		
					NO.	DATE	BY
1	02.03.20	WPT	LD	ISSUED FOR CONSTRUCTION			
2	02.03.20	WPT	LD	GENERAL REVISION			
3	02.03.20	WPT	LD	AS BUILT			

Tuxla GAS ENGINEERING LTD.

EnerMark Inc.

JOARCAM 11-13 BATTERY
 LSD 11-13-50-22 W4M
 OR. PUMP BLDG - ELECTRICAL LAYOUT

DATE	02.03.20
BY	WPT
CHKD.	C. THOMAS
SHEET	0-1 30, B-1 50
REV.	E-0003C (CONTROL) 2 of 2