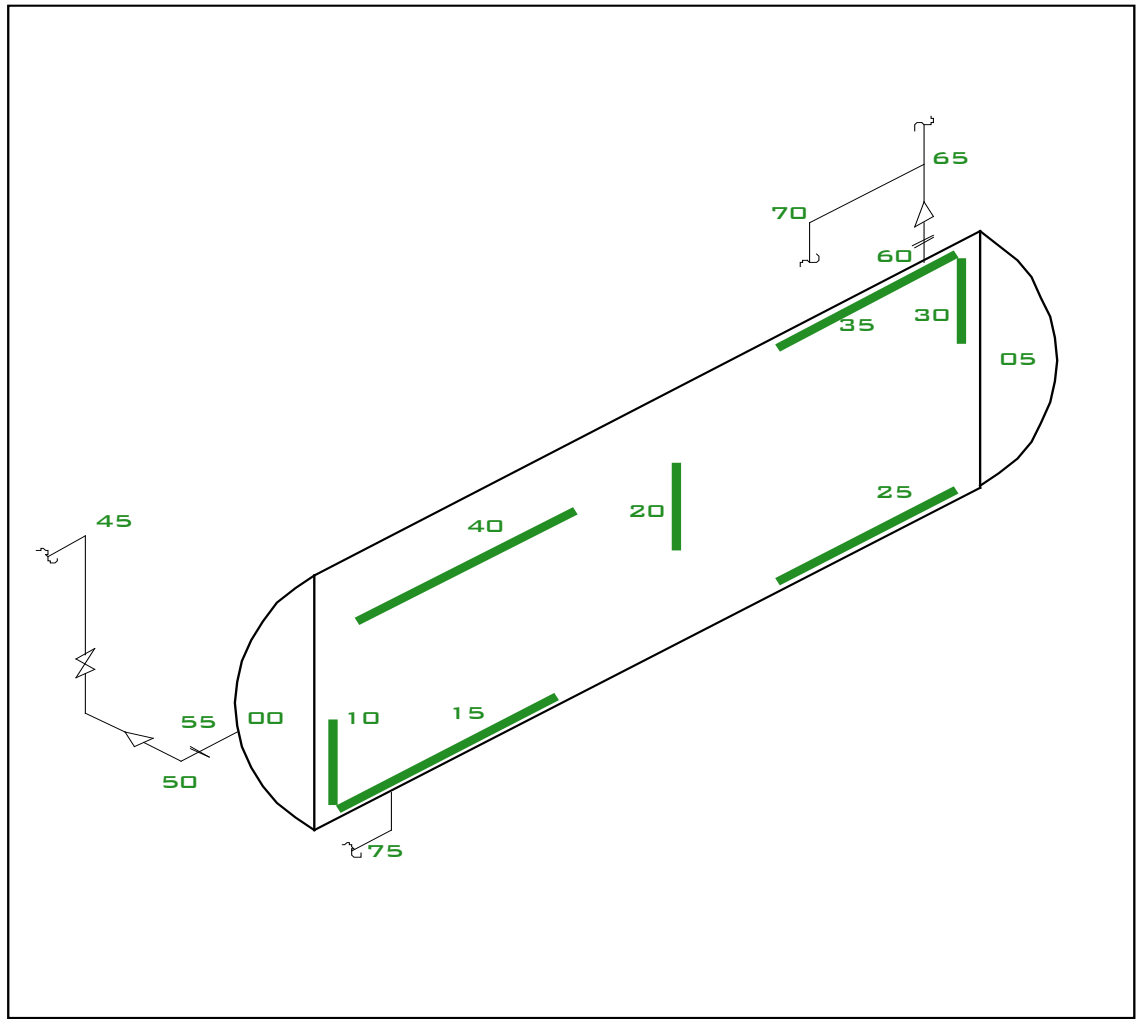


Alpine NDT Services		Unit# >	-	PO# >	-	Date >	Nov. 19, 2024
Client >	FUELLED	A# >	-	Report# >	4899-3	Year >	2000
Contact >	AJAY SINGH	Ser. # >	NB253678	Insulated >	NO	OD >	24"
Equipment >	SUCTION SCRUBBER	CRN# >	NB659.2	MAWP >	175 PSI	PWHT >	NO
Manufacturer >	STEEL FAB	Service >	OUT OF SERVICE	Temp >	450 F	RT >	NONE

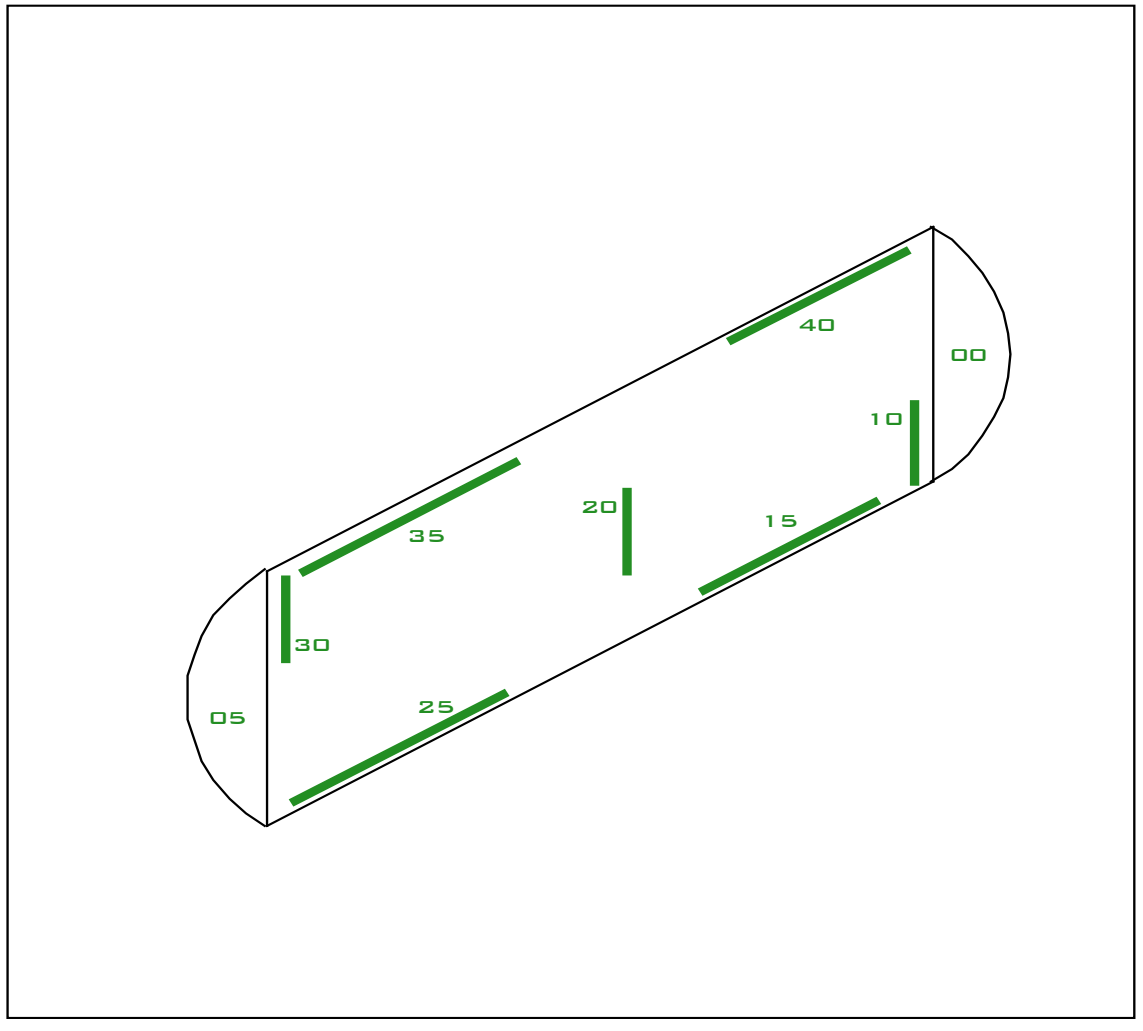


UT Machine	Make: GE Inspection	Model: USM Go	Serial #: 11105089	Calibration Date: Oct. 18, 2024				
Transducer	Make: Stresstel	Frequency: 5 MHz	Serial #: 023PX8	Size: .250"	Angle: 0°	Mode: Longitudinal		
Cal Block	Type: 4 Step	Reflector: BWE	Serial #: 11963"	Thickness: 6.25mm - 25mm	Technician		Caeden Aris	
Code	ASME V Article 23 SE797	Temp	Ambient			Qualifications	CGSB MT2 SNT UT2 MT2	
Acceptance	Client Specification	Material	Carbon Steel			CGSB#	24369	
Procedure	UT-1 Thickness Testing Rev.1	Surface Prep	Painted			Report #	-	

Alpine NDT Services				Unit# >	-	PO# >	-	Date >	Nov. 19, 2024
Client >	FUELLED			A# >	-	Report# >	4899-3	Year >	2000
Contact >	AJAY SINGH			Ser. # >	NB253678	Insulated >	NO	OD >	24"
Equipment >	SUCTION SCRUBBER			CRN# >	NB659.2	MAWP >	175 PSI	PWHT >	NO
Manufacturer >	STEEL FAB			Service >	OUT OF SERVICE	Temp >	450 F	RT >	NONE

No.	Orientation	Location	Material	Size	Sch.	Nom.	Min.	CA	A/V	Previous	Previous	Previous	Previous	Min.	Avg.
00	Vertical	Head	-	24"	Plate	.375"	.265"	-	Verified	-	-	-	-	.376"	.380"
Comments:															
05	Vertical	Head	-	24"	Plate	.375"	.265"	-	Verified	-	-	-	-	.348"	.360"
Comments:															
10	Vertical	Shell	-	24"	Plate	.313"	.303"	-	Verified	-	-	-	-	.312"	.320"
Comments:															
15	Horizontal	Shell	-	24"	Plate	.313"	.303"	-	Verified	-	-	-	-	.305"	.320"
Comments:															
20	Vertical	Shell	-	24"	Plate	.313"	.303"	-	Verified	-	-	-	-	.312"	.320"
Comments:															
25	Horizontal	Shell	-	24"	Plate	.313"	.303"	-	Verified	-	-	-	-	.307"	.320"
Comments:															
30	Vertical	Shell	-	24"	Plate	.313"	.303"	-	Verified	-	-	-	-	.321"	.325"
Comments:															
35	Horizontal	Shell	-	24"	Plate	.313"	.303"	-	Verified	-	-	-	-	.316"	.325"
Comments:															
40	Horizontal	Shell	-	24"	Plate	.313"	.303"	-	Verified	-	-	-	-	.316"	.320"
Comments:															
45	Vertical	Elbow	-	2"	XS	.218"	.191"	-	Assumed	-	-	-	-	.198"	.205"
Comments:															
50	Horizontal	Elbow	-	3"	STD	.216"	.189"	-	Assumed	-	-	-	-	.197"	.210"
Comments:															
55	Circ	Pipe (Nozzle)	-	3"	XS	.300"	.263"	-	Assumed	-	-	-	-	.277"	.300"
Comments:															
60	Circ	Pipe (Nozzle)	-	3"	XS	.300"	.263"	-	Assumed	-	-	-	-	.301"	.320"
Comments:															
65	Vertical	Tee	-	2"	XS	.218"	.191"	-	Assumed	-	-	-	-	.235"	.320"
Comments:															
70	Vertical	Elbow	-	2"	XS	.218"	.191"	-	Assumed	-	-	-	-	.202"	.210"
Comments:															
75	Circ	Pipe (Threaded)	-	1"	XS	.179"	.154"	-	Assumed	-	-	-	-	.176"	.185"
Comments:															
80															
Comments:															
85															
Comments:															
90															
Comments:															
95															
Comments:															

Alpine NDT Services		Unit# >	-	PO# >	-	Date >	Nov. 19, 2024
Client >	FUELLED	A# >	-	Report# >	4899-4	Year >	2001
Contact >	AJAY SINGH	Ser. # >	NB273080	Insulated >	No	OD >	30"
Equipment >	AIR RECEIVER	CRN# >	06406.1C	MAWP >	200 PSI	PWHT >	No
Manufacturer >	STEEL FAB.	Service >	OUT OF SERVICE	Temp >	450 F	RT >	NONE

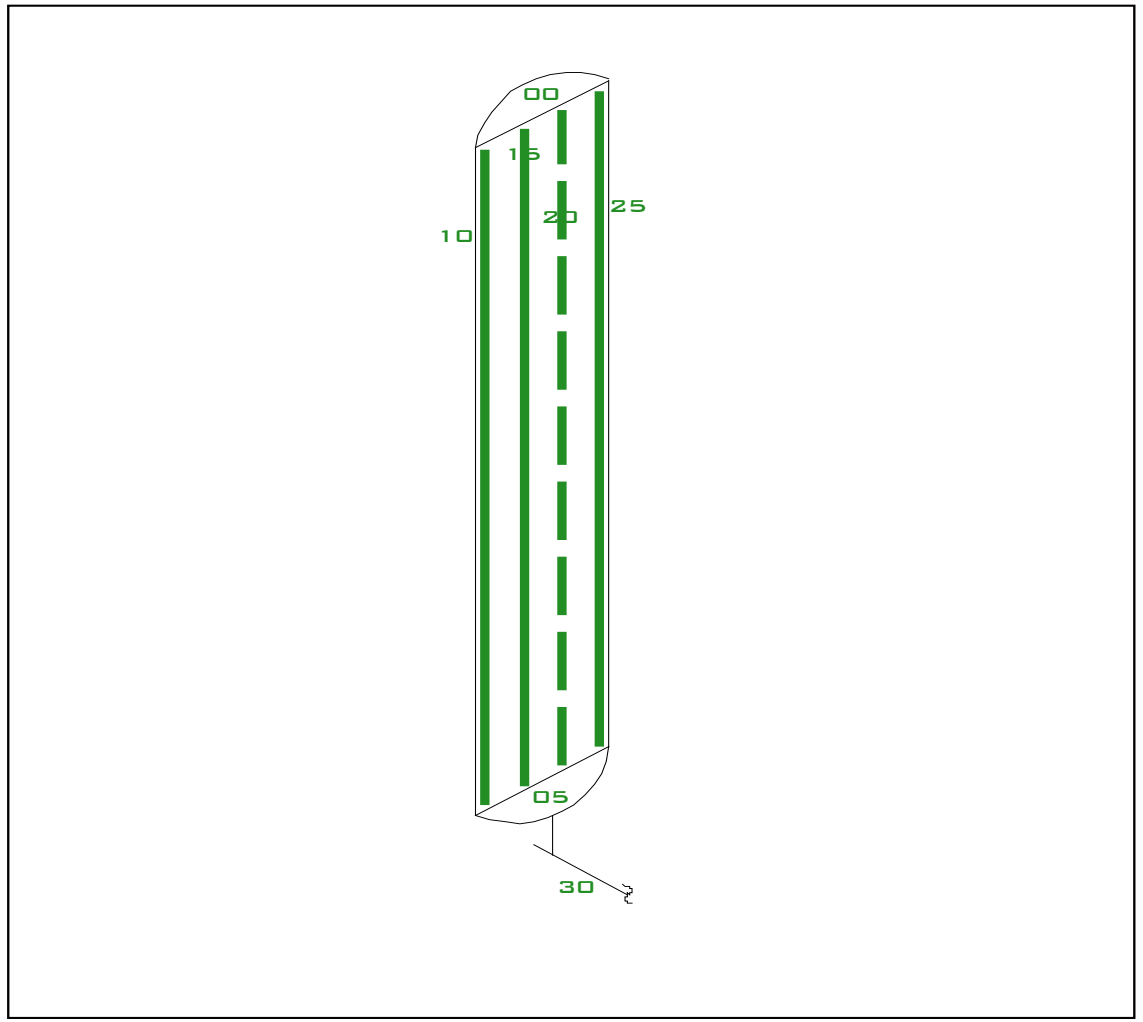
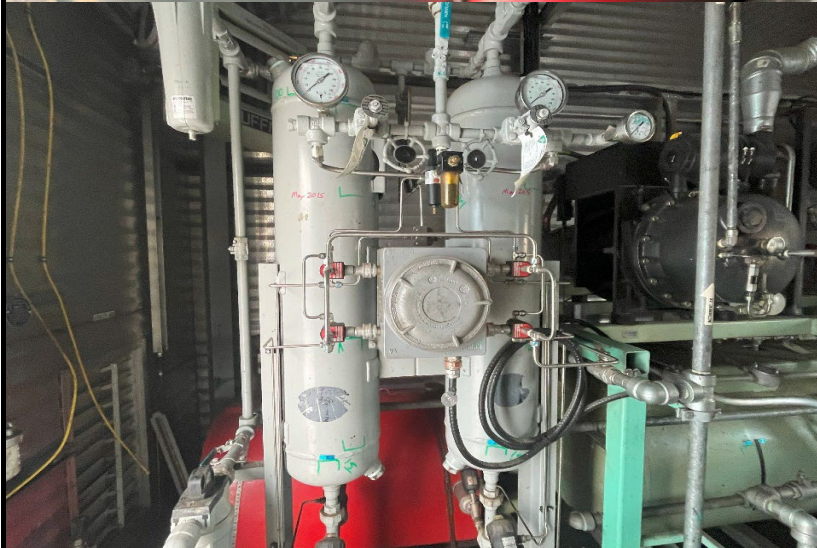
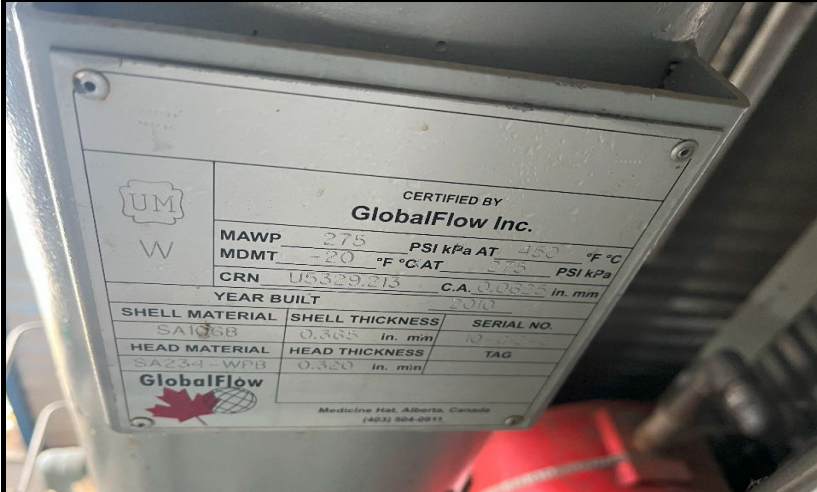


UT Machine	Make: GE Inspection	Model: USM Go	Serial #: 11105089	Calibration Date: Oct. 18, 2024				
Transducer	Make: Stresstel	Frequency: 5 MHz	Serial #: 023PX8	Size: .250"	Angle: 0°	Mode: Longitudinal		
Cal Block	Type: 4 Step	Reflector: BWE	Serial #: 11963"	Thickness: 6.25mm - 25mm	Technician		Caeden Aris	
Code	ASME V Article 23 SE797	Temp	Ambient			Qualifications		
Acceptance	Client Specification	Material	Carbon Steel			CGSB#	24369	
Procedure	UT-1 Thickness Testing Rev.1	Surface Prep	Painted			Report #	-	

Alpine NDT Services			Unit# >	-	PO# >	-	Date >	Nov. 19, 2024
Client >	FUELLED		A# >	-	Report# >	4899-4	Year >	2001
Contact >	AJAY SINGH		Ser. # >	NB273080	Insulated >	No	OD >	30"
Equipment >	AIR RECEIVER		CRN# >	06406.1C	MAWP >	200 PSI	PWHT >	No
Manufacturer >	STEEL FAB.		Service >	OUT OF SERVICE	Temp >	450 F	RT >	NONE

No.	Orientation	Location	Material	Size	Sch.	Nom.	Min.	CA	A/V	Previous	Previous	Previous	Previous	Min.	Avg.
00	Vertical	Head	-	30"	Plate	.250"	.186"	-	Verified	-	-	-	-	.131"	.200"
Comments: Low spots throughout bottom. Lowest found at very bottom of head 2"x2" pit.															
05	Vertical	Head	-	30"	Plate	.250"	.186"	-	Verified	-	-	-	-	.154"	.200"
Comments: Low spots throughout bottom. Lowest found at very bottom of head 2"x2" pit.															
10	Vertical	Shell	-	30"	Plate	.250"	.227"	-	Verified	-	-	-	-	.207"	.225"
Comments: Low throughout entire scan.															
15	Horizontal	Shell	-	30"	Plate	.250"	.227"	-	Verified	-	-	-	-	.172"	.200"
Comments: Low throughout entire scan.															
20	Vertical	Shell	-	30"	Plate	.250"	.227"	-	Verified	-	-	-	-	.214"	.230"
Comments: Generally low throughout scan.															
25	Horizontal	Shell	-	30"	Plate	.250"	.227"	-	Verified	-	-	-	-	.169"	.200"
Comments: Low throughout entire scan.															
30	Vertical	Shell	-	30"	Plate	.250"	.227"	-	Verified	-	-	-	-	.228"	.240"
Comments:															
35	Horizontal	Shell	-	30"	Plate	.250"	.227"	-	Verified	-	-	-	-	.228"	.240"
Comments:															
40	Horizontal	Shell	-	30"	Plate	.250"	.227"	-	Verified	-	-	-	-	.239"	.250"
Comments:															
45															
Comments:															
50															
Comments:															
55															
Comments:															
60															
Comments:															
65															
Comments:															
70															
Comments:															
75															
Comments:															
80															
Comments:															
85															
Comments:															
90															
Comments:															
95															
Comments:															

Alpine NDT Services		Unit# >	-	PO# >	-	Date >	Nov. 19, 2024
Client >	FUELLED	A# >	-	Report# >	4899-5	Year >	2010
Contact >	AJAY SINGH	Ser. # >	10-012-6	Insulated >	NO	OD >	10"
Equipment >	AIR DRYER	CRN# >	U5329.13	MAWP >	275 PSI	PWHT >	NO
Manufacturer >	GLOBAL FLOW INC.	Service >	OUT OF SERVICE	Temp >	450 F	RT >	NONE

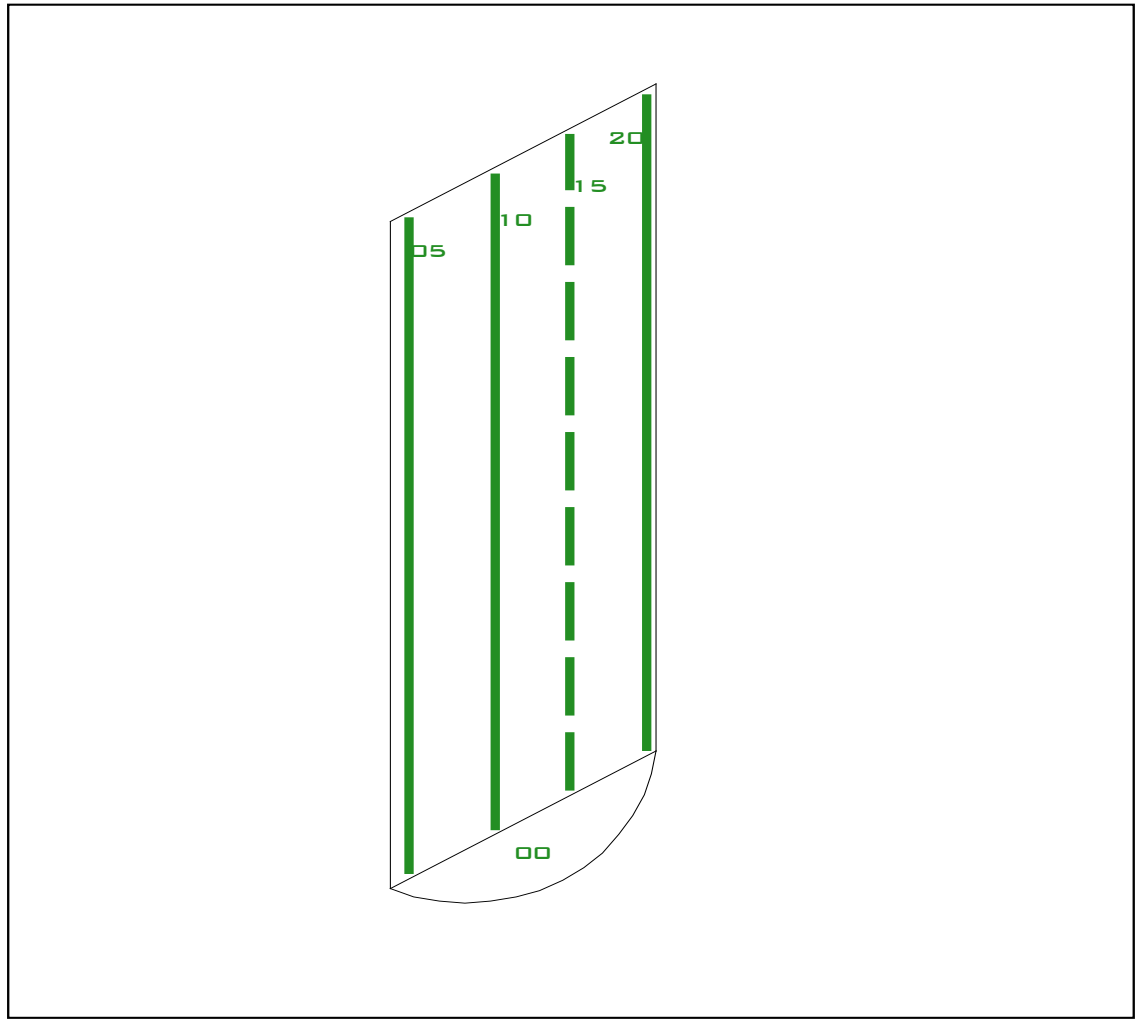
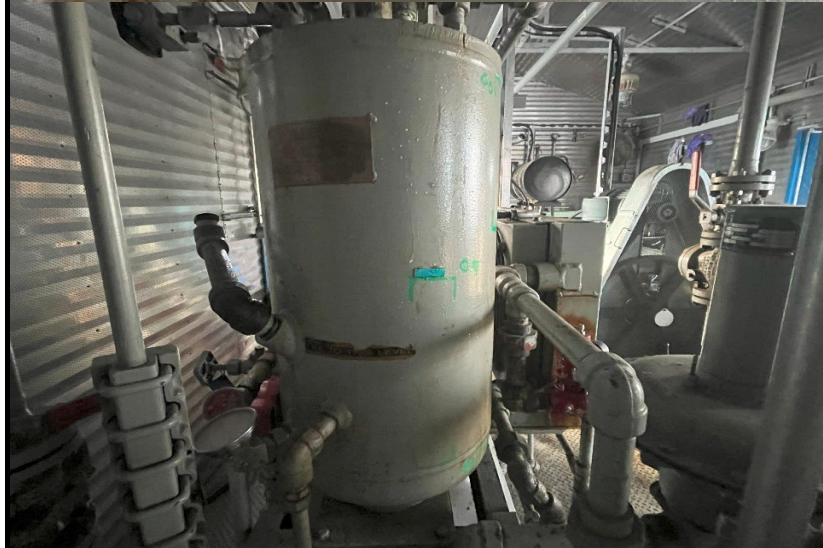
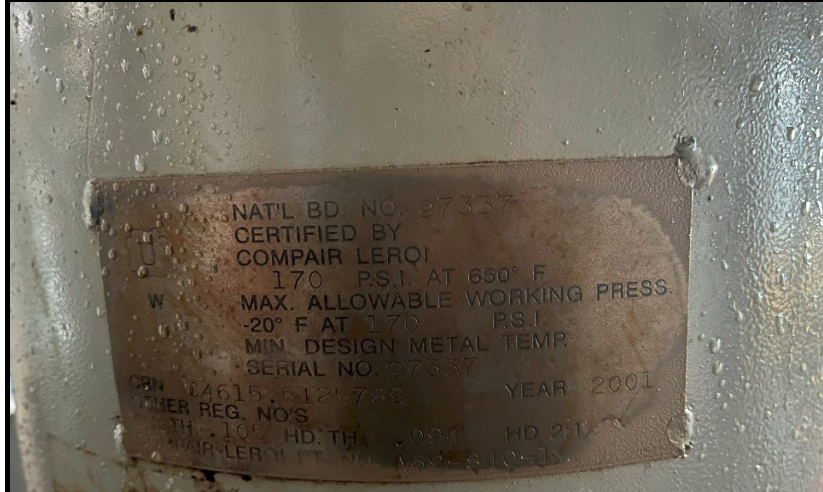


UT Machine	Make: GE Inspection	Model: USM Go	Serial #: 11105089	Calibration Date: Oct. 18, 2024				
Transducer	Make: Stresstel	Frequency: 5 MHz	Serial #: 023PX8	Size: .250"	Angle: 0°	Mode: Longitudinal		
Cal Block	Type: 4 Step	Reflector: BWE	Serial #: 11963"	Thickness: 6.25mm - 25mm	Technician		Caeden Aris	
Code	ASME V Article 23 SE797	Temp	Ambient			Qualifications		
Acceptance	Client Specification	Material	Carbon Steel			CGSB#	24369	
Procedure	UT-1 Thickness Testing Rev.1	Surface Prep	Painted			Report #	-	

Alpine NDT Services				Unit# >	-	PO# >	-	Date >	Nov. 19, 2024
Client >	FUELLED			A# >	-	Report# >	4899-5	Year >	2010
Contact >	AJAY SINGH			Ser. # >	10-012-6	Insulated >	NO	OD >	10"
Equipment >	AIR DRYER			CRN# >	U5329.13	MAWP >	275 PSI	PWHT >	NO
Manufacturer >	GLOBAL FLOW INC.			Service >	OUT OF SERVICE	Temp >	450 F	RT >	NONE

No.	Orientation	Location	Material	Size	Sch.	Nom.	Min.	CA	A/V	Previous	Previous	Previous	Previous	Min.	Avg.
00	Vertical	Head	SA 234 WPB	10"	STD	.365"	.320"	.0625"	Verified	-	-	-	-	.376"	.390"
Comments:															
05	Vertical	Head	SA 234 WPB	10"	STD	.365"	.320"	.0625"	Verified	-	-	-	-	.365"	.390"
Comments:															
10	Vertical	Shell	SA 106B	10"	STD	.365"	.319"	.0625"	Verified	-	-	-	-	.358"	.390"
Comments:															
15	Vertical	Shell	SA 106B	10"	STD	.365"	.319"	.0625"	Verified	-	-	-	-	.364"	.390"
Comments:															
20	Vertical	Shell	SA 106B	10"	STD	.365"	.319"	.0625"	Verified	-	-	-	-	.343"	.370"
Comments:															
25	Vertical	Shell	SA 106B	10"	STD	.365"	.319"	.0625"	Verified	-	-	-	-	.363"	.390"
Comments:															
30	Circ	Pipe (Threaded)	-	1"	XS	.179"	.154"	.0625"	Assumed	-	-	-	-	.175"	.185"
Comments:															
35															
Comments:															
40															
Comments:															
45															
Comments:															
50															
Comments:															
55															
Comments:															
60															
Comments:															
65															
Comments:															
70															
Comments:															
75															
Comments:															
80															
Comments:															
85															
Comments:															
90															
Comments:															
95															
Comments:															

Alpine NDT Services		Unit# >	-	PO# >	-	Date >	Nov. 19, 2024
Client >	FUELLED	A# >	-	Report# >	4899-7	Year >	2001
Area >	AJAY SINGH	Ser. # >	97337	Insulated >	NO	OD >	14"
Equipment >	DISCHARGE COALESCER	CRN# >	C4615.6125789	MAWP >	170 PSI	PWHT >	NO
Manufacturer >	COMPAIR LERDI	Service >	OUT OF SERVICE	Temp >	650 F	RT >	NONE



UT Machine	Make: GE Inspection	Model: USM Go	Serial #: 11105089	Calibration Date: Oct. 18, 2024			
Transducer	Make: Stresstel	Frequency: 5 MHz	Serial #: 023PX8	Size: .250"	Angle: 0°	Mode: Longitudinal	
Cal Block	Type: 4 Step	Reflector: BWE	Serial #: 11963"	Thickness: 6.25mm - 25mm	Technician	Caeden Aris	
Code	ASME V Article 23 SE797	Temp	Ambient	Qualifications		CGSB MT2 SNT UT2 MT2	
Acceptance	Client Specification	Material	Carbon Steel	CGSB#	24369		
Procedure	UT-1 Thickness Testing Rev.1	Surface Prep	Painted	Report #	-		



Alpine NDT Services				Unit# >	-	PO# >	-	Date >	Nov. 19, 2024
Client >	FUELLED			A# >	-	Report# >	4899-7	Year >	2001
Contact >	AJAY SINGH			Ser. # >	97337	Insulated	NO	OD >	14"
Equipment >	DISCHARGE COALESCE			CRN# >	C4615.6125789	MAWP >	170 PSI	PWHT >	NO
Manufacturer >	COMPAIR LERDI			Service >	OUT OF SERVICE	Temp >	650 F	RT >	NONE

No.	Orientation	Location	Material	Size	Sch.	Nom.	Min.	CA	A/V	Previous	Previous	Previous	Previous	Min.	Avg.
00	Vertical	head	-	14"	Plate	.125"	.105"	-	Verified	-	-	-	-	.110"	.125"
Comments:															
05	Vertical	Shell	-	14"	Plate	.125"	.094"	-	Verified	-	-	-	-	.133"	.135"
Comments:															
10	Vertical	Shell	-	14"	Plate	.125"	.094"	-	Verified	-	-	-	-	.133"	.140"
Comments:															
15	Vertical	Shell	-	14"	Plate	.125"	.094"	-	Verified	-	-	-	-	.133"	.140"
Comments:															
20	Vertical	Shell	-	14"	Plate	.125"	.094"	-	Verified	-	-	-	-	.136"	.140"
Comments:															
25															
Comments:															
30															
Comments:															
35															
Comments:															
40															
Comments:															
45															
Comments:															
50															
Comments:															
55															
Comments:															
60															
Comments:															
65															
Comments:															
70															
Comments:															
75															
Comments:															
80															
Comments:															
85															
Comments:															
90															
Comments:															
95															
Comments:															