

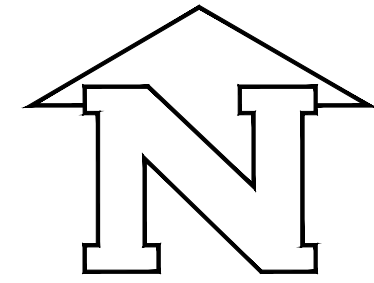
ATCO HUNTER  
BRM ALASKA RETROFIT  
WASILLA, ALASKA

ISSUED FOR REVIEW  
JULY 18, 2024

Contractor must check and verify all dimensions and conditions on site and report any discrepancies to designer and/or engineer prior to proceeding with work

DO NOT SCALE DRAWINGS

All drawings, specifications and related documents are the copyright property of AES Engineering Ltd. Reproduction of any of the aforementioned documents in whole or in part is not permitted without the written permission of AES Engineering Ltd.



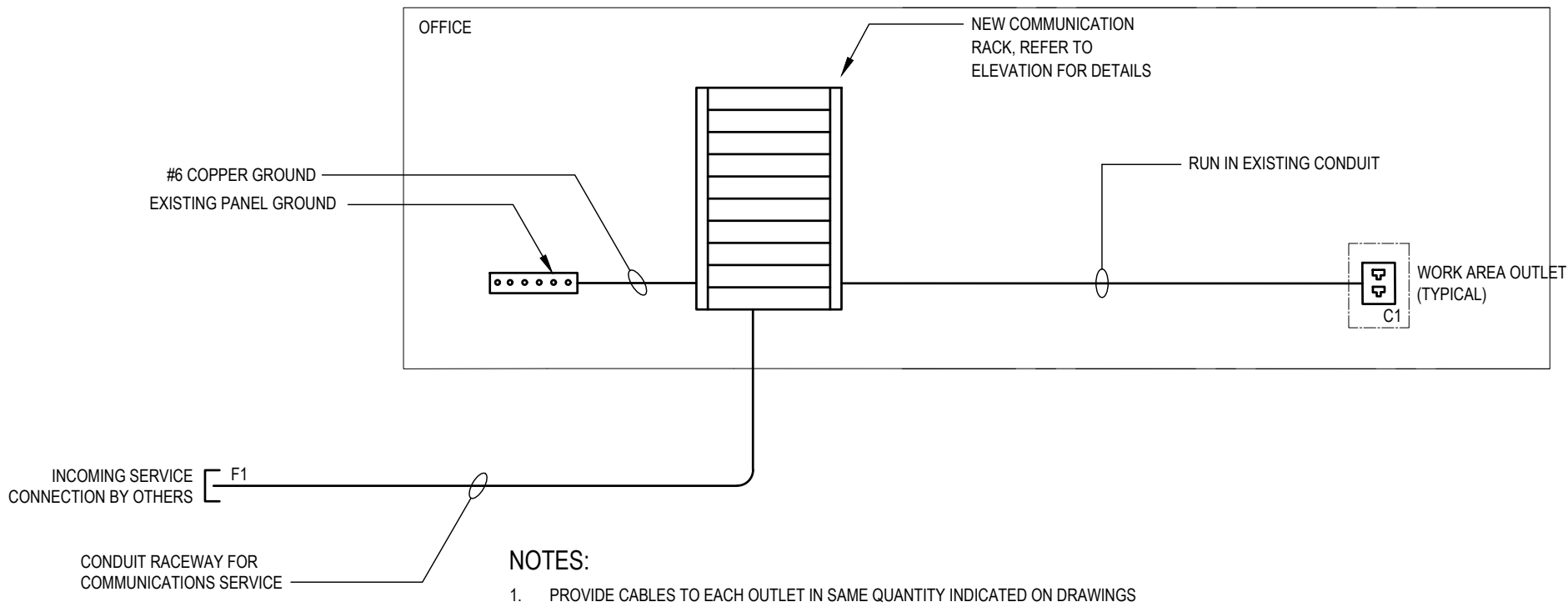
PROJECT NORTH

PRODUCTION DRAWINGS BY:



DRAWING LIST	
E0.0	COVER PAGE
E1.0	ELECTRICAL LAYOUT
E2.0	ELECTRICAL SPECIFICATIONS

ELECTRICAL SYMBOL LEGEND	
ABBREVIATIONS	
NOTE	EQUIPMENT SHOWN DOTTED IS EXISTING AND TO REMAIN UNLESS INDICATED OTHERWISE
R	EXISTING DEVICE TO BE REMOVED
RN	EXISTING DEVICE TO BE REPLACED WITH NEW
RR	EXISTING DEVICE TO BE REMOVED AND RELOCATED
RE	EXISTING DEVICE IN NEW RELOCATED POSTION
POWER	
	DUPLEX RECEPTACLE
	4 PLEX RECEPTACLE
	ABOVE COUNTER DUPLEX RECEPTACLE
	GROUND FAULT CIRCUIT INTERRUPTER (GFCI)
	5-20R DUPLEX RECEPTACLE (T-SLOT)
	5-20R DUPLEX RECEPTACLE (I-SLOT)
	GROUND FAULT CIRCUIT INTERRUPTER (GFCI)
	POWER CONNECTION
	MOTOR CONNECTION
	DISCONNECT SWITCH
	PANEL BOARD
	FORCE FLOW HEATER
LIGHTING	
	CEILING RECESSED LUMINAIRE
	STRIP LUMINAIRE
	WALL MOUNTED LUMINAIRE
	SINGLE POLE TOGGLE SWITCH, GANGED AS SHOWN
	OCCUPANCY SENSOR, CEILING MOUNTED
	OCCUPANCY SENSOR, CEILING MOUNTED
	COMBINATION EXIT SIGN WITH REMOTE HEADS
FIRE ALARM	
	SMOKE ALARM

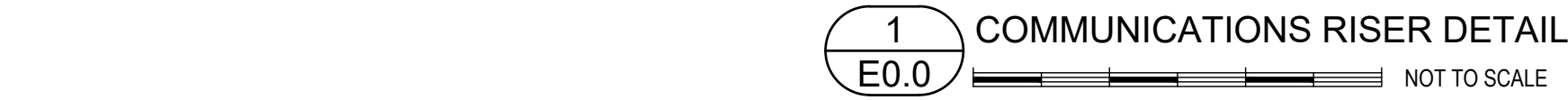


CABLE	SCHEDULE
FIBRE	
F1	INCOMING SERVICE (BY OTHER)
COPPER	
C1	2x CAT 5E - 4 PAIR

PANELBOARD SCHEDULE							
JOB NO./NAME	: 0324.0214 - ATCO HUNTER BRM ALASKA RETROFIT						
PANEL	: EXISTING						
SYSTEM	: 120/240V, 1PH, 3W						
TYPE	: SQUARE D						
LOCATION	: INTERIOR						
MOUNTING	: FLUSH						
NO. CIRCUITS	: 12						
BUS SIZE	: 100A						
SYM. FAULT RATING	: 10KAIC						
DESCRIPTION	BRK	POLE	CCT	CCT	POLE	BRK	DESCRIPTION
A/C UNIT	60	2	01	02	1	35	BOOSTER PUMP
			03	04	1	15	ELECTRIC WATER HEATER
RECEPTACLES	15	1	05	06	1	15	RECEPTACLES
BASEBOARD HEATER	15	1	07	08	1	15	LIGHTING AND FANS
SPARE	15	1	09	10	2	20	WALL FAN ELECTRIC HEATERS
SPARE	15	1	11	12			

LUMINAIRE SCHEDULE					
TYPE	MANUFACTURER	CAT. No.	OPTICS	VOLTAGE	REMARKS
A	LITHONIA	CLX L24 1500LM SEF FDL 120 GZ10 35K 80CRI	15W, LED, 1500lm, 3500K, 80CRI	120V	SURFACE MOUNT 2' STRIP FIXTURE

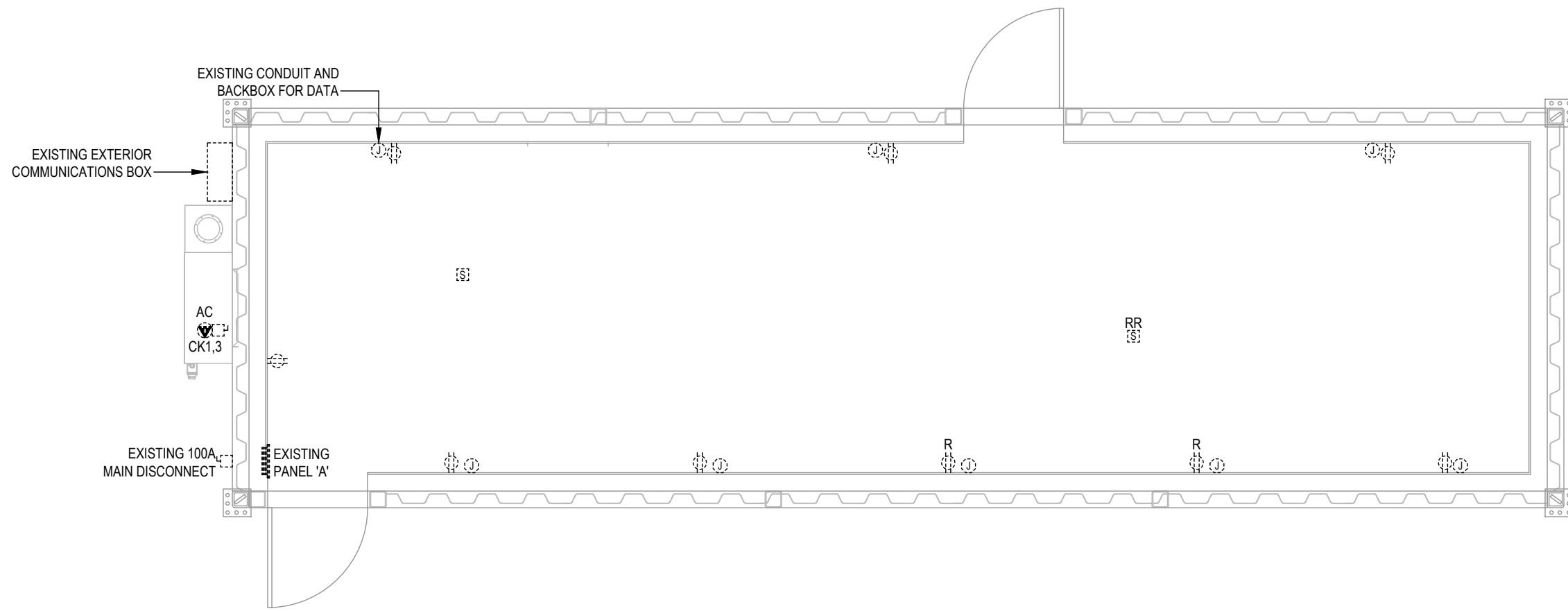
MECHANICAL EQUIPMENT SCHEDULE																													
Ø#	DESCRIPTION	EQUIPMENT LOCATION	LOAD			VOLTS	UNIT			STARTER			DISC.			CONTROL			SUPPLY PANEL					WIRE & CONDUIT			NOTE		
			MCA	KW	HP		SUPPLY	MOUNT	CONNECT	SUPPLY	MOUNT	CONNECT	TYPE	SUPPLY	MOUNT	CONNECT	TYPE	FIRE ALARM	PANEL #	PANEL LOCATION	BREAKER			WIRE SIZE	NO. BOND	CONDUIT SIZE (IN)		TOTAL AMPS	
																					AMPS	P	CCT NOS						
AC	EXISTING HVAC UNIT	EXTERIOR	-	-	-	208	1	M	M	E	-	-	-	E	E	E	M	M	E	EX	INTERIOR	60	2	1,3	-	-	-	-	-
EF-1	CEILING MOUNT INLINE EXHAUST FAN	WASHROOM	-	0.1	-	120	1	M	M	E	-	-	-	E	E	E	M	M	E	EX	INTERIOR	15	1	8	12	2	21	-	2
HHW-1	ELECTRIC WATER HEATER	MECHANICAL ROOM	-	1	-	120	1	M	M	E	-	-	-	E	E	E	M	M	E	EX	INTERIOR	15	1	4	12	2	21	-	2
P-1	BOOSTER PUMP	MECHANICAL ROOM	-	-	0.75	120	1	M	M	E	-	-	-	E	E	E	M	M	E	EX	INTERIOR	35	1	2	12	2	21	-	2
FFH-1	WALL FAN ELECTRIC HEATER	OFFICE	-	1.5	-	240	1	M	M	E	-	-	-	E	E	E	M	M	E	EX	INTERIOR	20	2	10,12	12	3	21	-	2
FFH-2	WALL FAN ELECTRIC HEATER	OFFICE	-	1.5	-	240	1	M	M	E	-	-	-	E	E	E	M	M	E	EX	INTERIOR	20	2	10,12	12	3	21	-	2
EBB-1000	1000W ELECTRIC BASE BOARD HEATER	MECHANICAL ROOM	-	1	-	120	1	E	E	E	-	-	-	E	E	E	E	E	E	EX	INTERIOR	15	1	7	12	2	21	-	2
LEGEND														NOTES															
M = DENOTES BY MECHANICAL CONTRACTOR														1. ALL VARIABLE SPEED DRIVES TO HAVE A DEDICATED COPPER GROUND CONDUCTOR SIZED TO MATCH PHASE CONDUCTOR.															
E = DENOTES BY ELECTRICAL CONTRACTOR														2. CONFIRM FINAL MECHANICAL EQUIPMENT REQUIREMENTS WITH MECHANICAL CONTRACTOR'S SHOP DRAWINGS AND ADJUST CIRCUIT WIRING AND BREAKER RATING IF REQUIRED AT NO ADDITIONAL COST.															
T = THERMOSTAT																													



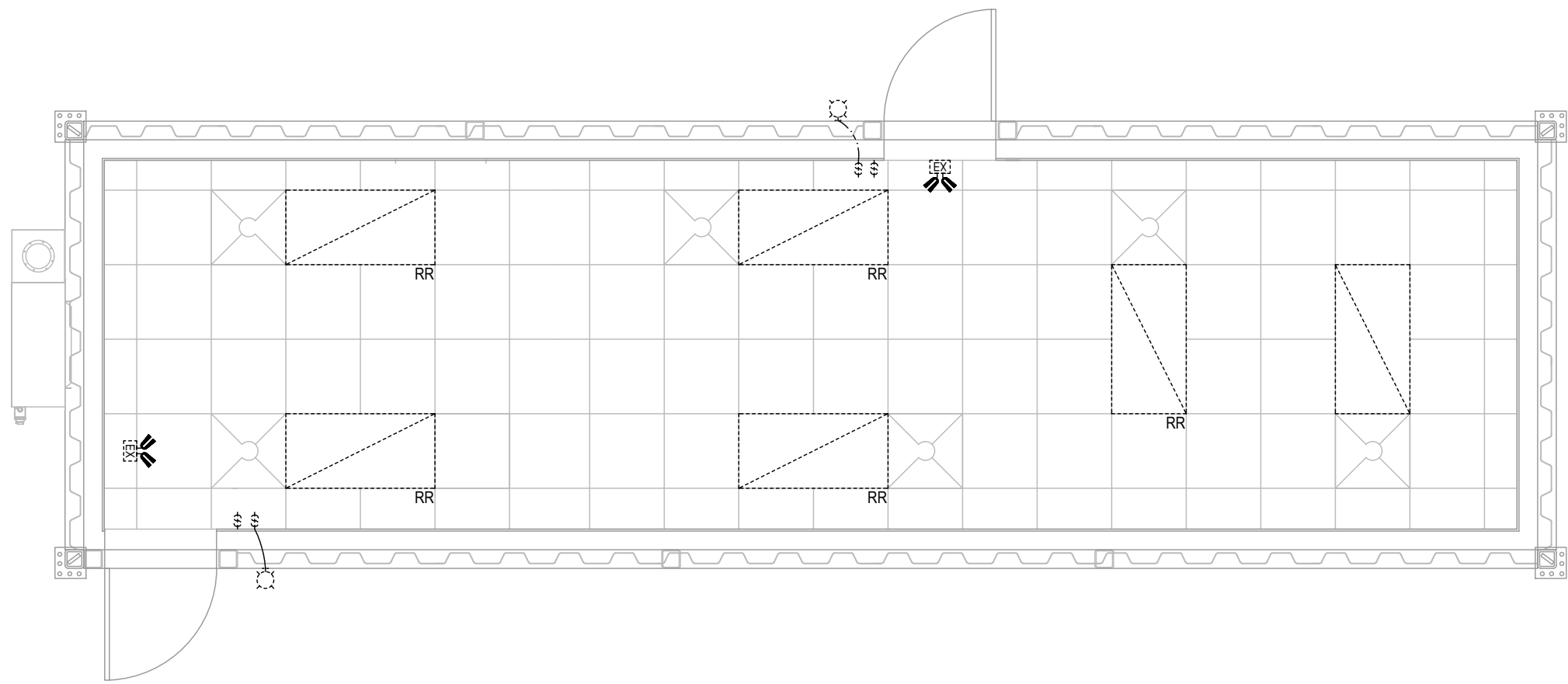
LOAD CALCULATION	
ATCO HUNTER BRM ALASKA RETROFIT	
BASIC LOAD:	
OFFICE AREA	= 50W/m²
44.6m²	= 2230W
TOTAL BASIC LOAD	50W/m² x 44.6m² = 2230W
MECHANICAL LOADS:	
HVAC (EXISTING)	= 10000W
EF-1	= 100W
HHW-1	= 1000W
P-1	= 550W
FFH-1	= 1500W
FFH-2	= 1500W
EBB-1000	= 1000W
TOTAL MECHANICAL LOAD	= 15,700W
TOTAL BUILDING LOAD	= 17,930W
TENANT SPACE	
WILL UTILIZE 100A	
2P BREAKER	
PROVIDING	240V x 100A x 80% = 19,200W



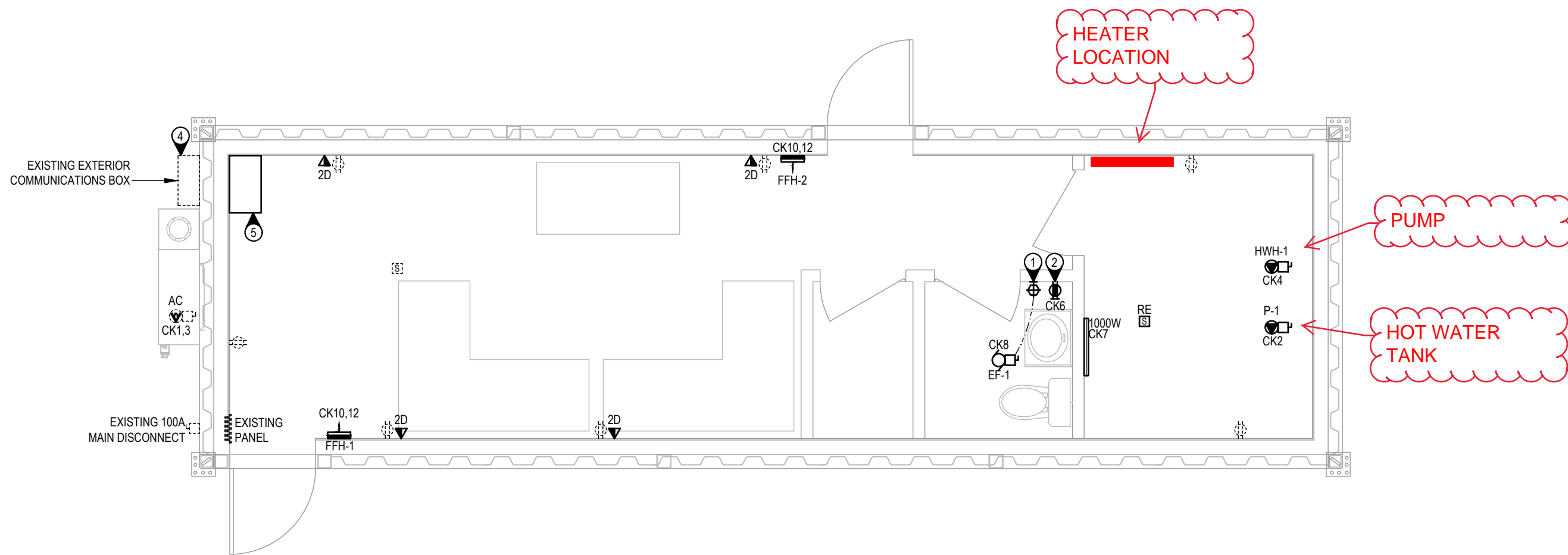
E0.0



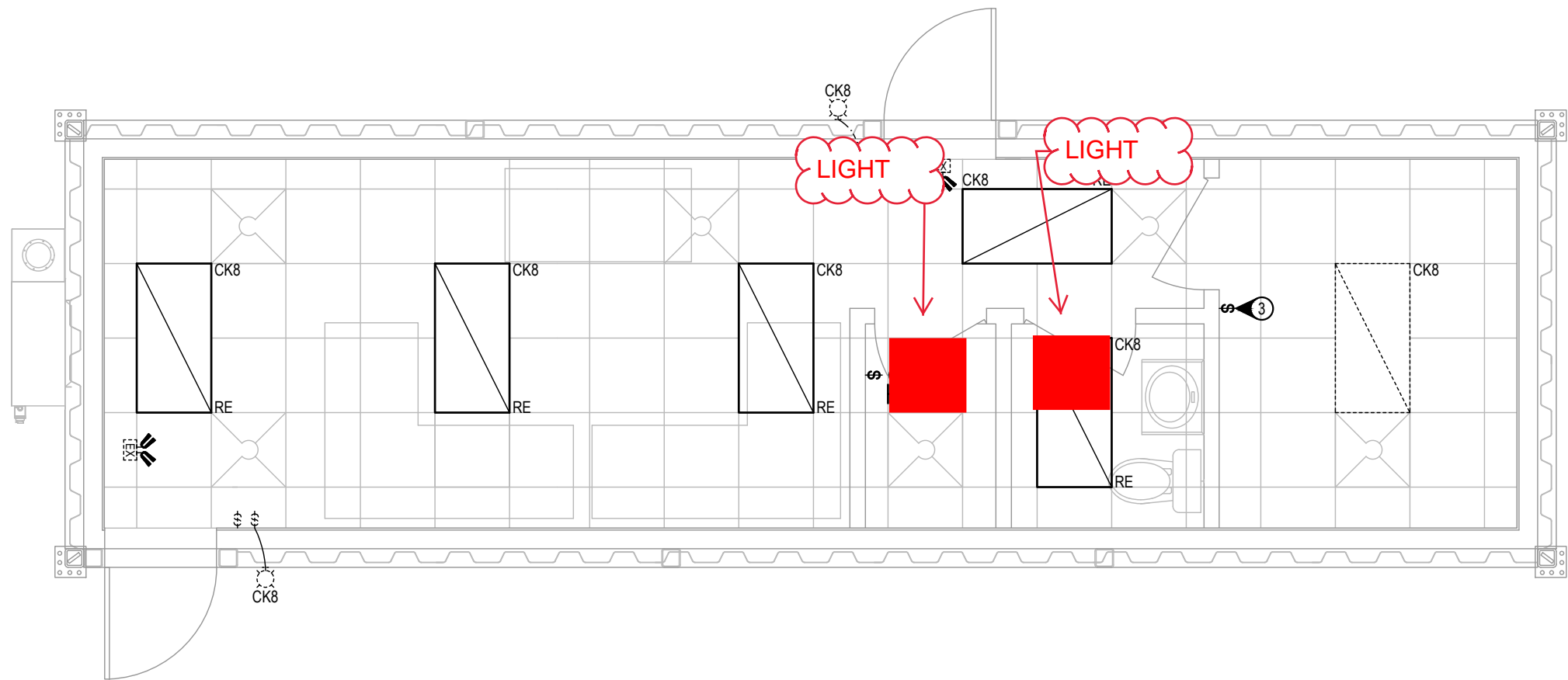
1 DEMOLITION POWER AND SYSTEM LAYOUT  
E1.0 1/4"=1'-0"



2 DEMOLITION LIGHTING LAYOUT  
E1.0 1/4"=1'-0"



3 RENOVATION POWER AND SYSTEM LAYOUT  
E1.0 1/4"=1'-0"



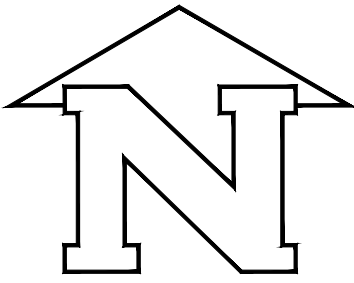
4 RENOVATION LIGHTING LAYOUT  
E1.0 1/4"=1'-0"

- NOTES:
- 1 WALL MOUNTED OCCUPANCY SENSOR SHALL BE TIED TO LOCAL EXHAUST FAN SUCH THAT FAN IS ENERGIZED UPON ROOM OCCUPANCY. UTILIZE SAME SENSOR FOR FAN AND LIGHTING CONTROL.
  - 2 ENSURE NO DEVICES ARE CONNECTED TO THE LOAD SIDE OF THE GFCI RECEPTACLE.
  - 3 INTERCEPT EXISTING LIGHTING CIRCUIT AND PROVIDE LOCAL LIGHTING CONTROL (TYPICAL).
  - 4 CONTRACTOR TO SUPPLY AND INSTALL TELEPHONE SURGE PROTECTOR AND 110-PUNCH BLOCK WITHIN EXISTING EXTERIOR COMMUNICATIONS BOX.
  - 5 CONTRACTOR TO PROVIDE WALL MOUNTED 6U COMMUNICATION RACK COMPLETE WITH G15 RATED PLYWOOD BACKING. REFER TO DRAWING 2/EED.0 FOR EQUIPMENT REQUIREMENTS

Contractor must check and verify all dimensions and conditions on site and report any discrepancies to designer and/or engineer prior to proceeding with work

DO NOT SCALE DRAWINGS

All drawings, specifications and related documents are the copyright property of AES Engineering Ltd. Reproduction of any of the aforementioned documents in whole or in part is not permitted without the written permission of AES Engineering Ltd.



PROJECT NORTH

PRODUCTION DRAWINGS BY:



5	ISSUED FOR REVIEW	07/18/2024
4	ISSUED FOR REVIEW	07/12/2024
3	ISSUED FOR REVIEW	07/05/2024
2	ISSUED FOR REVIEW	06/27/2024
1	ISSUED FOR REVIEW	06/21/2024

REV	DESCRIPTION	DATE
-----	-------------	------

PROJECT NAME:  
ATCO HUNTER  
BRM ALASKA RETROFIT

DRAWING TITLE:  
ELECTRICAL LAYOUT

DATE:	JUNE 2024
SCALE:	AS NOTED
DRAWN BY:	PS
CHECKED BY:	NM
JOB NUMBER:	0324.0214

DRAWING NUMBER:

E1.0

