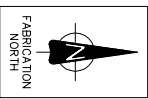
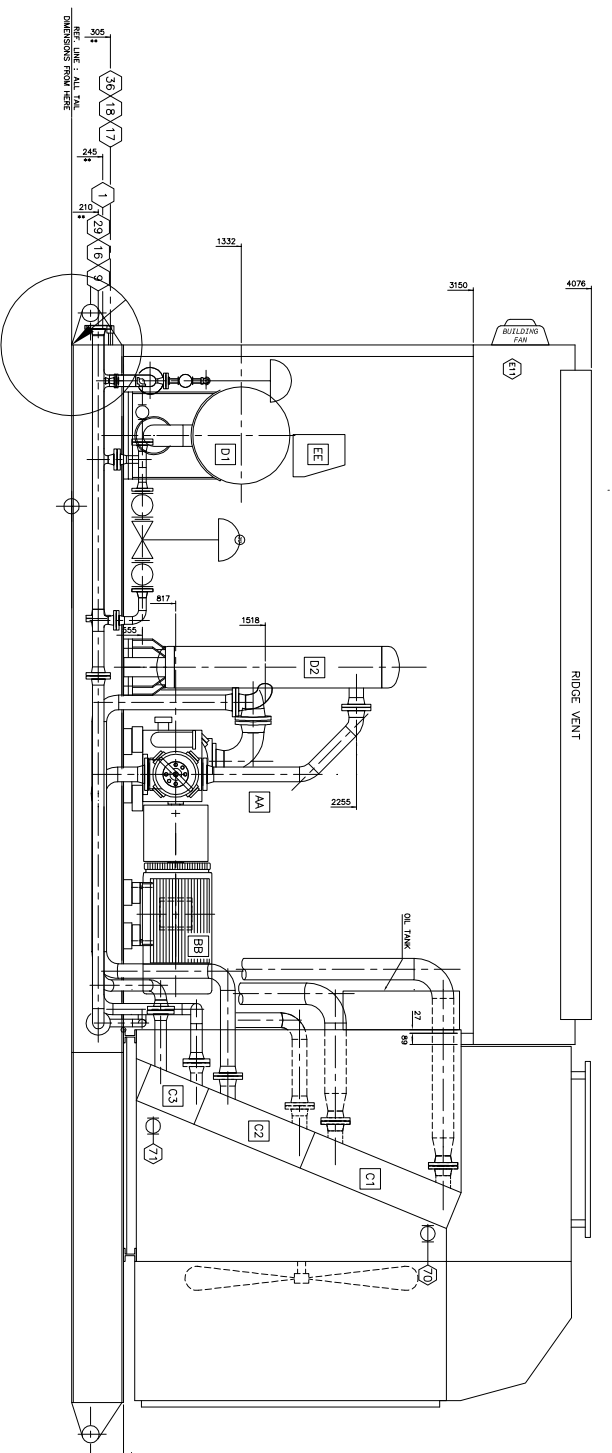
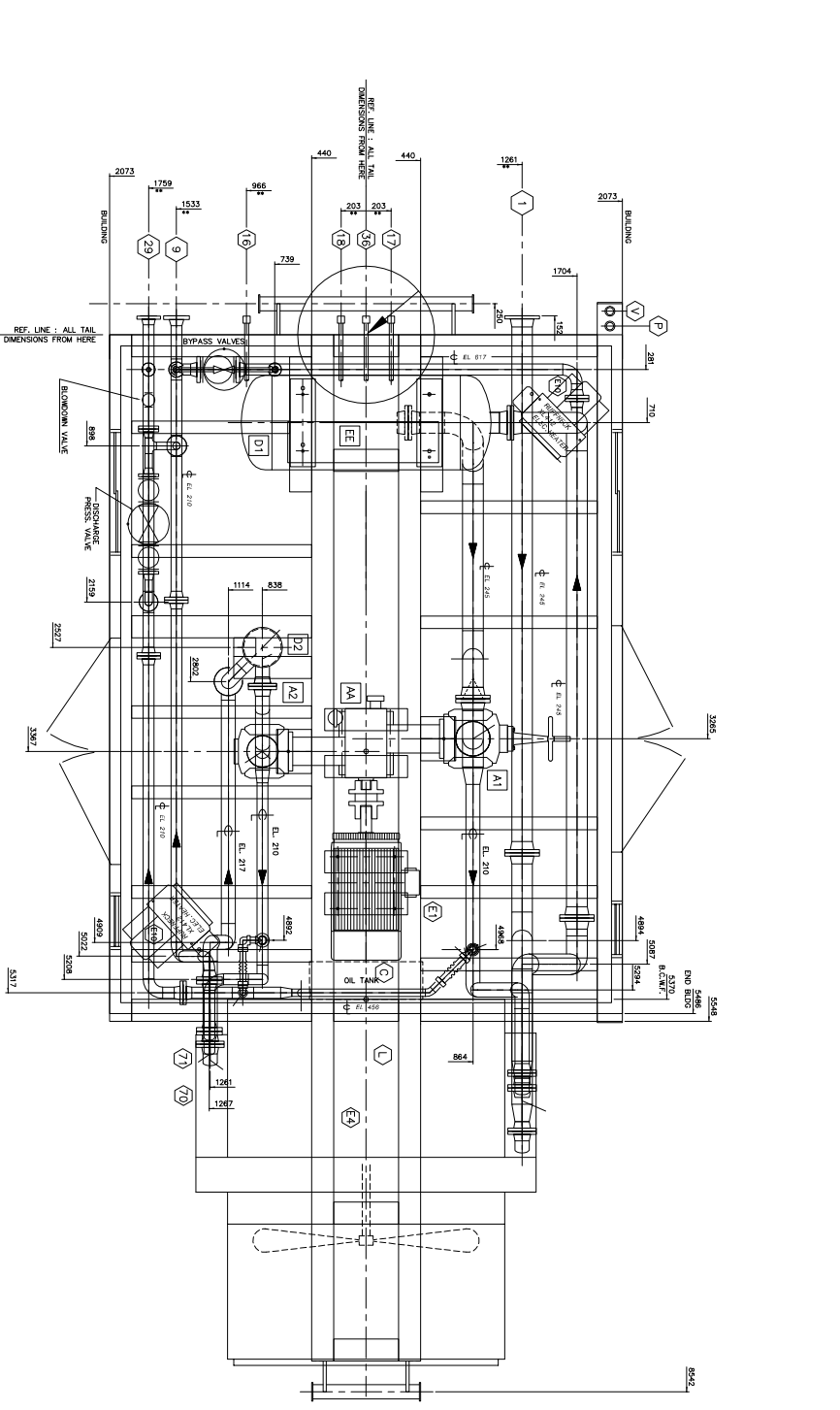


CUSTOMER CONNECTIONS		
NO.	DESCRIPTION	SIZE
1	STEEL ONE INLET	6" - 150# RF
2	STEEL TWO INLET	6" - 150# RF
3	SCISSOR BEAM HANGER	1" - 80#
4	ROOF VENT AND DRAIN	1" - 80#
5	DISTANCE PIECE VENT AND DRAIN	1" - 80#
6	30" VENT PIPES SUPPLY	3" - 150# RF
7	30" VENT PIPES RETURN	3" - 150# RF
8	4" VOLT SUPPLY TO COOLER	2" - 80#
9	4" VOLT RETURN FROM COOLER	2" - 80#



OTHER CONNECTIONS		
CONN.	DESCRIPTION	SIZE
C	COMPRESSION OIL TANK FILL	1" - 80# STACK
D	WASTE OIL TANK VENT	2" - 80# STACK
V	WASTE OIL TANK CLEAN OUT	2" - 80#

MAJOR COMPONENTS		
AA	COMPRESSION MOTOR	1" - 80#
AB	CONDENSER	1" - 80#
AC	EVAPORATOR	1" - 80#
AD	RECEIVER	1" - 80#
AE	HEATER MOTOR SUPPLY	1" - 80#
AF	HEATER MOTOR RETURN	1" - 80#
AG	HEATING FAN MOTOR SUPPLY	1" - 80#
AH	HEATING FAN MOTOR RETURN	1" - 80#



- GENERAL NOTES**
- THIS DRAWING IS NOT TO BE USED FOR CONSTRUCTION UNLESS STAMPED.
 - DO NOT SCALE THIS DRAWING.
 - ALL DIMENSIONS ARE IN MILLIMETERS.
 - FOR DESIGN PARAMETERS AND FACTOR SPECIFICATION REFER TO PROJECT.
 - ALL PIPING MUST BE AS F SPECIFIED BY THE PROJECT.
 - LOCATIONS OF CUSTOMER CONNECTIONS ARE NOT SHOWN IN THIS DRAWING. CUSTOMER CONNECTIONS SHALL BE IDENTIFIED BY THE CUSTOMER AND SHOWN ON A SEPARATE DRAWING. CUSTOMER CONNECTIONS SHALL BE IDENTIFIED BY THE CUSTOMER AND SHOWN ON A SEPARATE DRAWING.
 - IF THE CUSTOMER WISHES TO USE A DIFFERENT COMPRESSOR, THE CUSTOMER SHALL BE RESPONSIBLE FOR PROVIDING ALL NECESSARY INFORMATION TO THE ENGINEER.
 - THE FOLLOWING ITEMS WILL BE SHIPPED LOOSE FOR FIELD INSTALLATION BY OTHERS:
 - COMPRESSOR
 - CONDENSER
 - EVAPORATOR
 - RECEIVER
 - PIPE
 - VALVES
 - INSULATION

SHIPPING WEIGHTS		
MOTOR	1644	3600
COMPRESSOR	1741	3850
CONDENSER	3170	7000
EVAPORATOR	5000	11000
RECEIVER	1228	2700
PIPE	2042	4500
VALVES		
INSULATION		
TOTAL SHIPPING WT.		
TOTAL UNIT WEIGHT		

UNIT DIMENSIONS			
UNIT	LENGTH	WIDTH	HEIGHT
MAIN BODY	1314	1314	1314
EVAPORATOR	1314	1314	1314
CONDENSER	1314	1314	1314
RECEIVER	1314	1314	1314
PIPE	1314	1314	1314
VALVES	1314	1314	1314
INSULATION	1314	1314	1314

ENERFLEX Manufacturing

ENERFLEX MANUFACTURING, INC.
 4800, 70 Avenue SE
 Grand Rapids, MI 49508
 USA

FOR: **ENERFLEX MANUFACTURING, INC.**
 (LITTLE ROCK)

TITLE: **GENERAL ARRANGEMENT**
 ARBEL JG4/2, TOSHIBA 200HP 445T, AB-X-CHANGERS 72EH
 COMPRESSOR PACKAGER

DATE: 06/09/08
 DRAWN: BT
 CHECKED: BT

FOR: **ENERFLEX MANUFACTURING, INC.**
 (LITTLE ROCK)

DATE: 06/09/08
 DRAWN: BT
 CHECKED: BT

REPRODUCTION OF ANY PART OF THESE MATERIALS WITHOUT THE WRITTEN CONSENT OF ENERFLEX MANUFACTURING, INC. IS PROHIBITED. ENERFLEX MANUFACTURING, INC. SHALL BE RESPONSIBLE FOR THE REPAIR AND MAINTENANCE OF THE PRODUCTS.