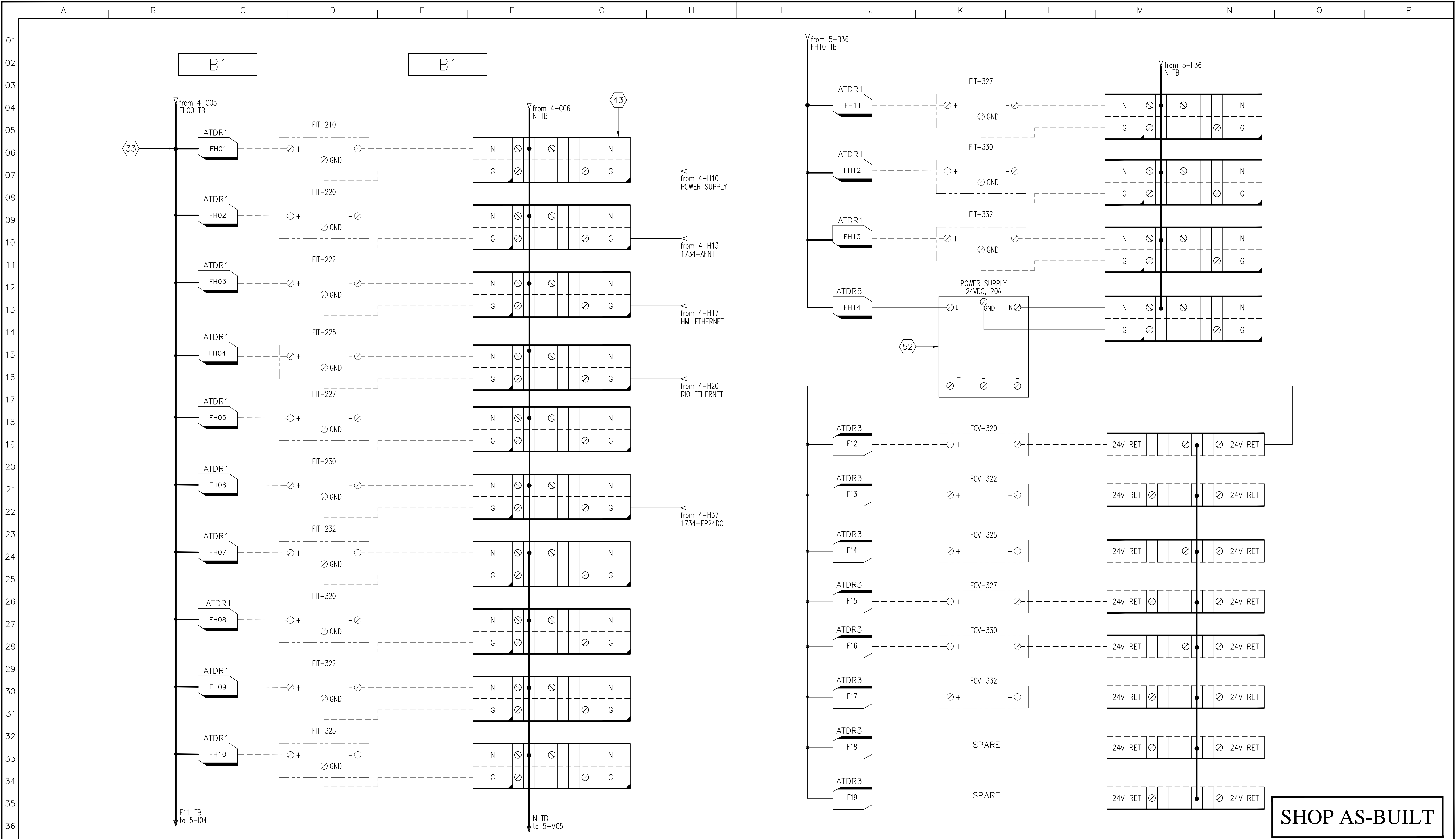



[illegible]

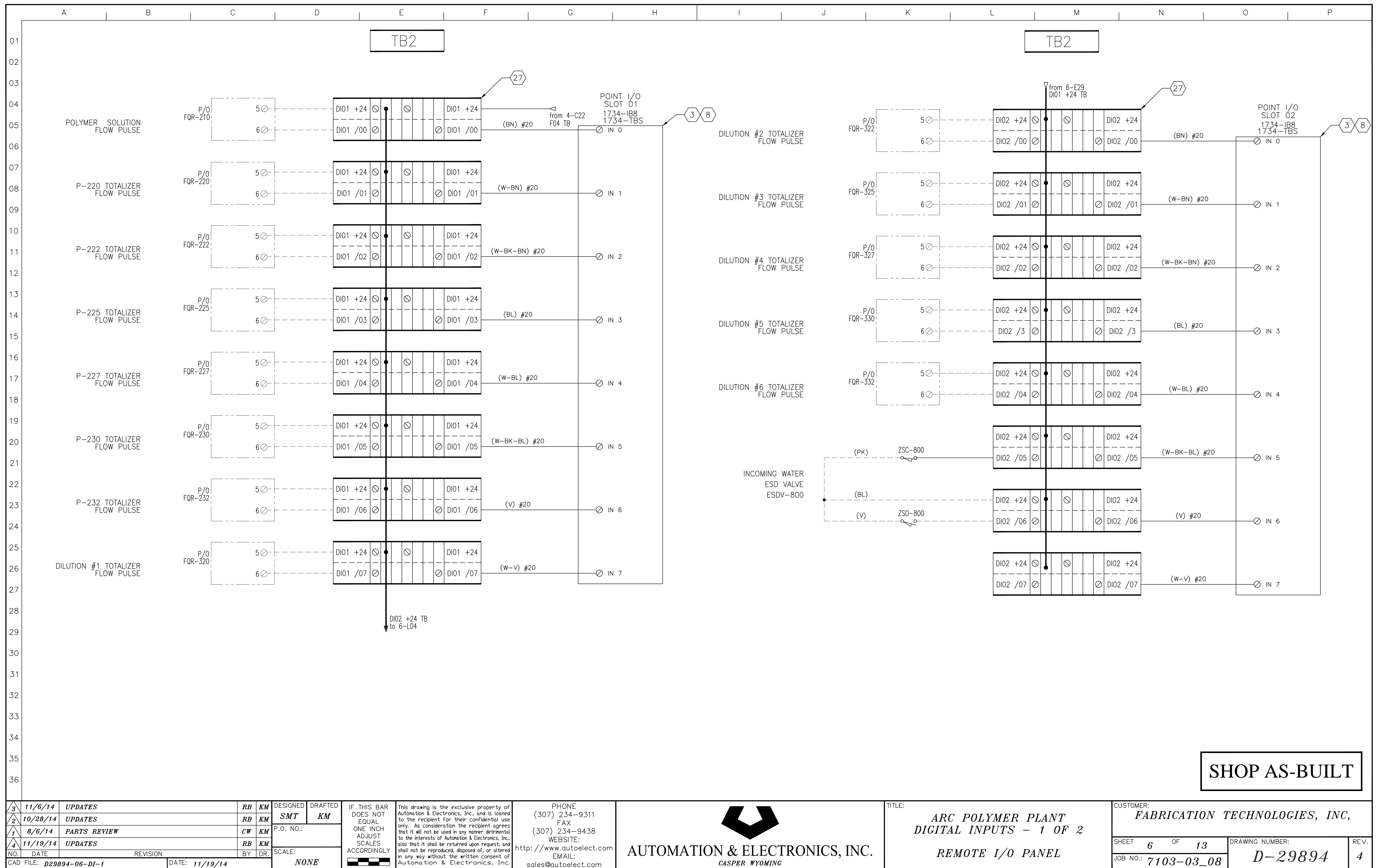


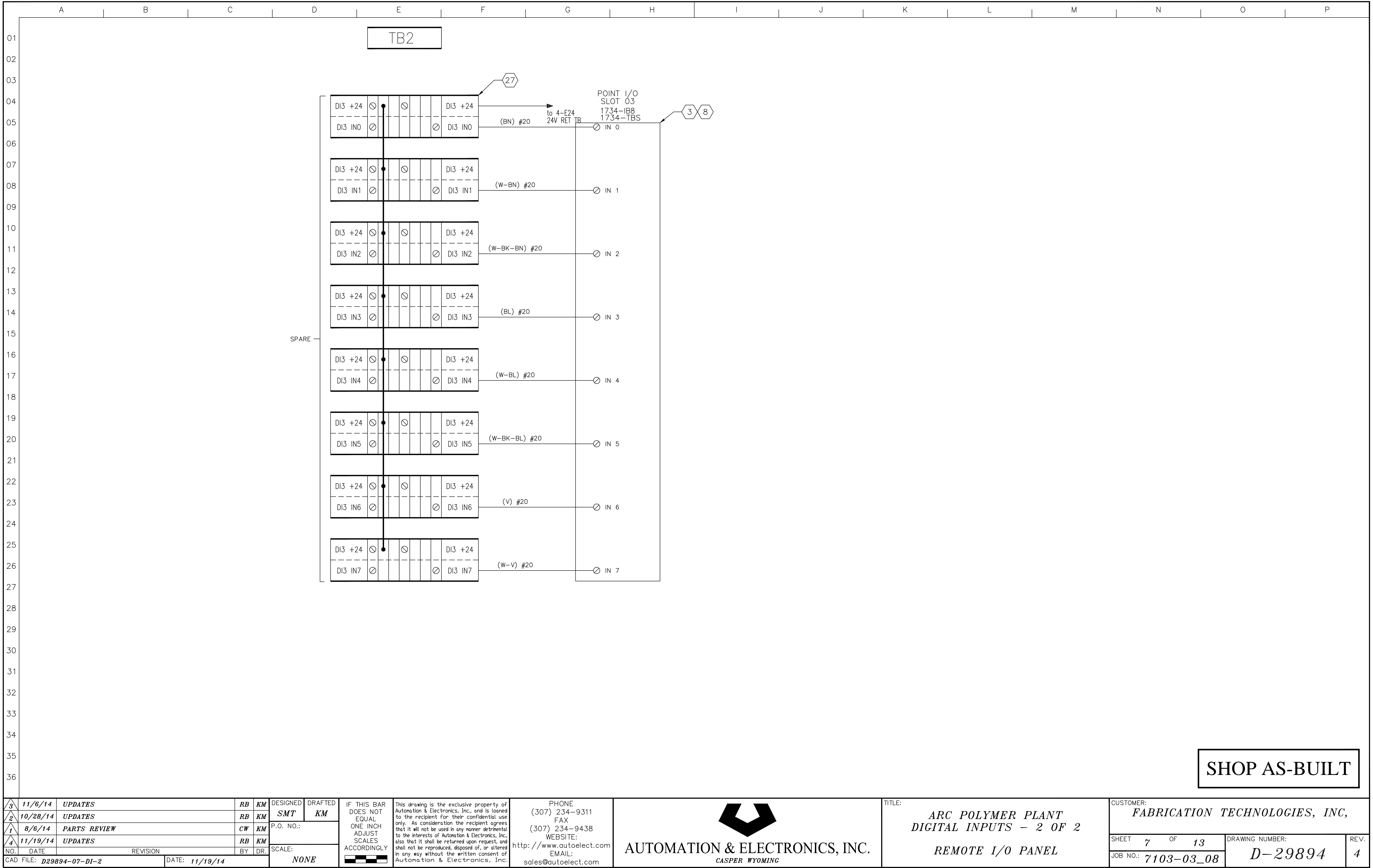






311/6/14		UPDATES		RB	KM	DESIGNED	DRAFTED	IF THIS BAR DOES NOT EQUAL ONE INCH ADJUST SCALES ACCORDINGLY	This drawing is the exclusive property of Automation & Electronics, Inc., and is loaned to the recipient for their confidential use only. As consideration the recipient agrees that it will not be used in any manner detrimental to the interests of Automation & Electronics, Inc., also that it shall be returned upon request, and shall not be reproduced, disposed of, or altered in any way without the written consent of Automation & Electronics, Inc.	PHONE (307) 234-9311 FAX (307) 234-9438 WEBSITE: http://www.autoelect.com EMAIL: sales@autoelect.com		AUTOMATION & ELECTRONICS, INC. CASPER WYOMING	TITLE: ARC POLYMER PLANT POWER REMOTE I/O PANEL	CUSTOMER: FABRICATION TECHNOLOGIES, INC.			
210/28/14		UPDATES		RB	KM	SMT	KM							SHEET 5 OF 13	DRAWING NUMBER: D-29894	REV. 4	
18/6/14		PARTS REVIEW		CW	KM	P.O. NO.:											
411/19/14		UPDATES		RB	KM	SCALE:	NONE										
NO. DATE		REVISION		BY DR.		SCALE:											
CAD FILE: D29894-05-ACPWR-UW		DATE: 11/19/14															





DI3 +24

DI3 IN4

⊗

⊗

•

⊗

DI3 +24

DI3 IN4

⊗

⊗

(W-BL) #20

⊗

IN 4

DI3 +24

DI3 IN5

⊗

⊗

•

⊗

DI3 +24

DI3 IN5

⊗

⊗

(W-BK-BL) #20

⊗

IN 5

DI3 +24

DI3 IN6

⊗

⊗

•

⊗

DI3 +24

DI3 IN6

⊗

⊗

(V) #20

⊗

IN 6

DI3 +24

DI3 IN7

⊗

⊗

•

⊗

DI3 +24

DI3 IN7

⊗

⊗

(W-V) #20

⊗

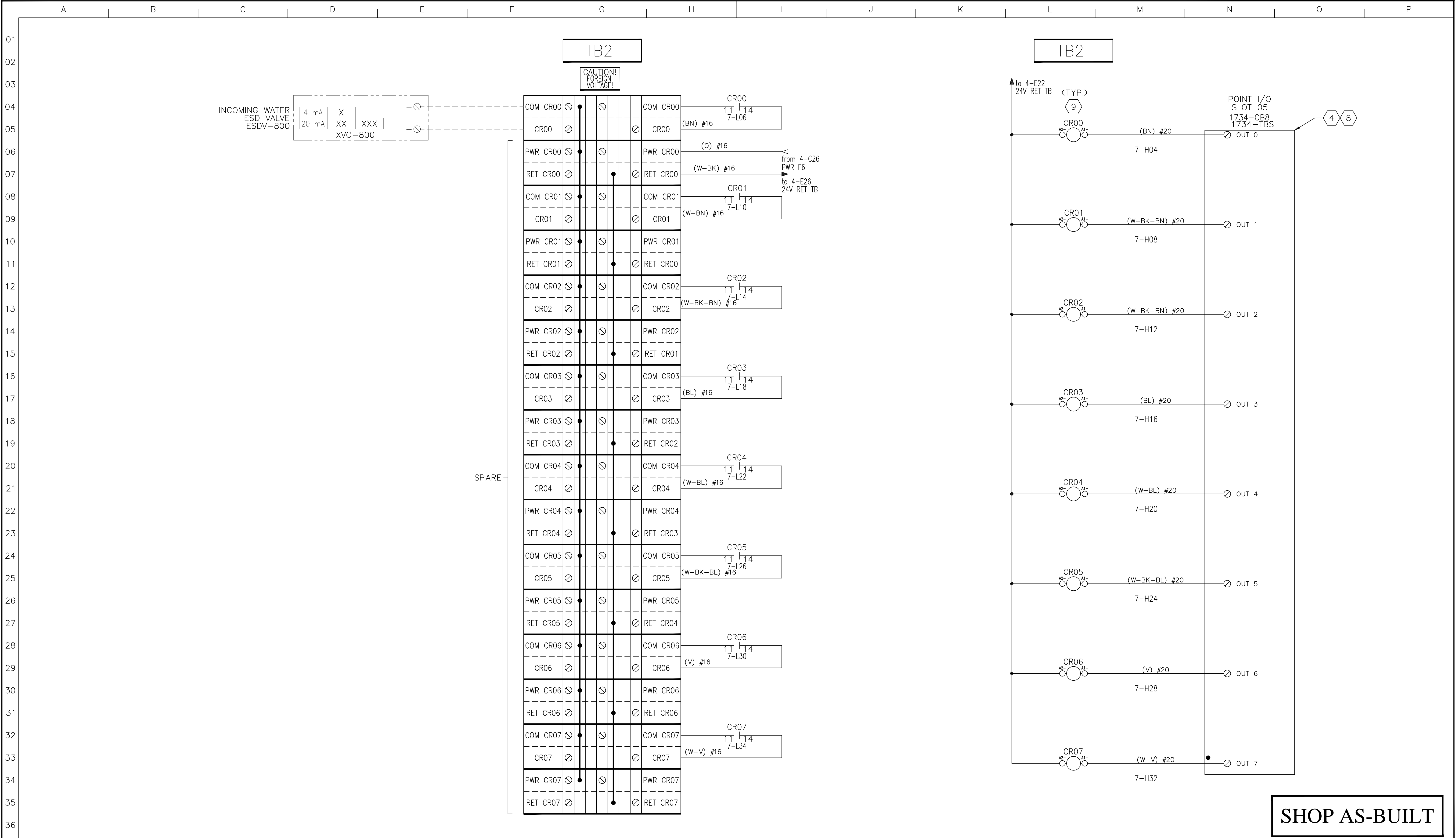
IN 7


SPARE

SHOP AS-BUILT

3	11/6/14	UPDATES	RB	KM	DESIGNED	DRAFTED	IF THIS BAR DOES NOT EQUAL ONE INCH ADJUST SCALES ACCORDINGLY	This drawing is the exclusive property of Automation & Electronics, Inc., and is loaned to the recipient for their confidential use only. As consideration the recipient agrees that it will not be used in any manner detrimental to the interests of Automation & Electronics, Inc., also that it shall be returned upon request, and shall not be reproduced, disposed of, or altered in any way without the written consent of Automation & Electronics, Inc.	PHONE (307) 234-9311 FAX (307) 234-9438 WEBSITE: http://www.autoelect.com EMAIL: sales@autoelect.com	AUTOMATION & ELECTRONICS, INC. CASPER WYOMING	TITLE:  ARC POLYMER PLANT DIGITAL INPUTS - 2 OF 2  REMOTE I/O PANEL	CUSTOMER: FABRICATION TECHNOLOGIES, INC.		
2	10/28/14	UPDATES	RB	KM	P.O. NO.:	SHEET 7 OF 13						DRAWING NUMBER:	REV.	
1	8/6/14	PARTS REVIEW	CW	KM		JOB NO.: 7103-03_08						D-29894	4	
4	11/19/14	UPDATES	RB	KM	SCALE:									
CAD FILE: D29894-07-DI-2			DATE: 11/19/14			NONE								

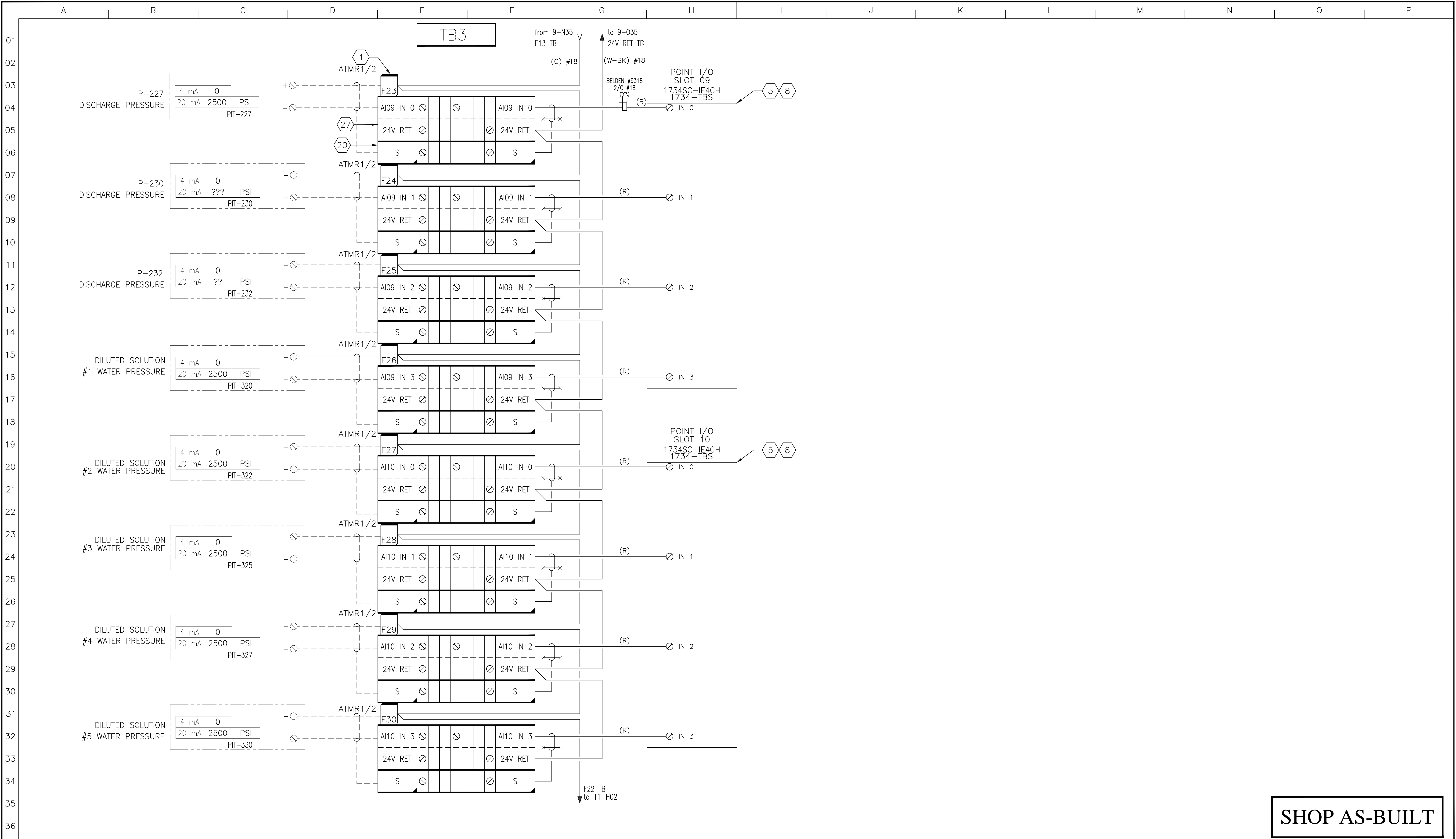





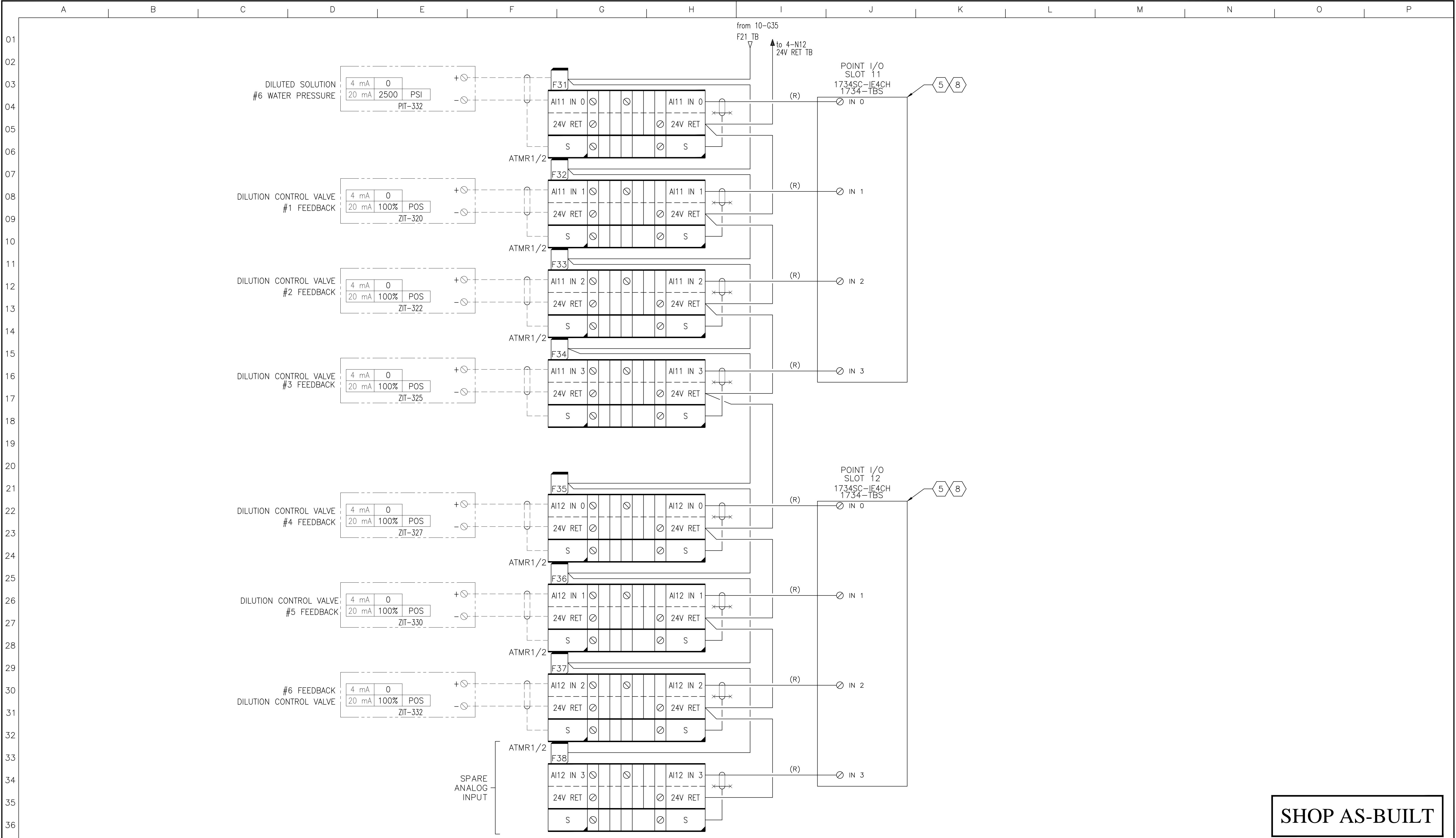
3	11/6/14	UPDATES	RB	KM	DESIGNED	DRAFTED	IF THIS BAR DOES NOT EQUAL ONE INCH ADJUST SCALES ACCORDINGLY	This drawing is the exclusive property of Automation & Electronics, Inc., and is loaned to the recipient for their confidential use only. As consideration the recipient agrees that it will not be used in any manner detrimental to the interests of Automation & Electronics, Inc., also that it shall be returned upon request, and shall not be reproduced, disposed of, or altered in any way without the written consent of Automation & Electronics, Inc.	PHONE (307) 234-9311 FAX (307) 234-9438 WEBSITE: http://www.autoelect.com EMAIL: sales@autoelect.com		AUTOMATION & ELECTRONICS, INC. CASPER WYOMING	TITLE:  ARC POLYMER PLANT DIGITAL OUTPUTS  REMOTE I/O PANEL	CUSTOMER:  FABRICATION TECHNOLOGIES, INC.	SHEET 8 OF 13 JOB NO.: 7103-03-08	DRAWING NUMBER: D-29894	REV. 4
2	10/28/14	UPDATES	RB	KM	SMT	KM										
1	8/6/14	PARTS REVIEW	CW	KM	P.O. NO.:	SCALE:										
4	11/19/14	UPDATES	RB	KM	BY DR.	NONE										
NO. DATE		REVISION		BY DR.		SCALE:		DATE: 11/19/14		CAD FILE: D29894-08-CR-D0-1						






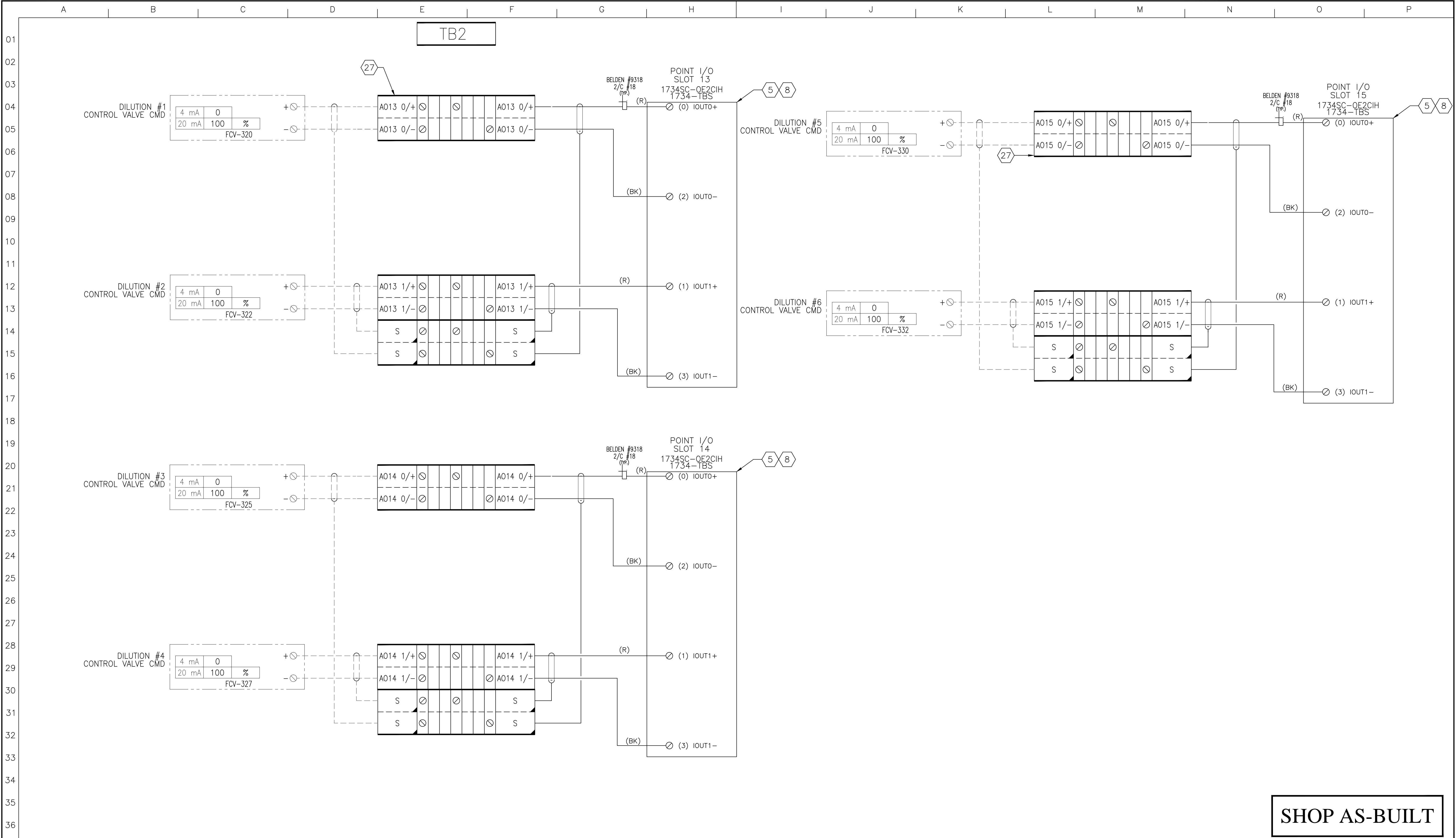


311/6/14		UPDATES		RB	KM	DESIGNED	DRAFTED	IF THIS BAR DOES NOT EQUAL ONE INCH ADJUST SCALES ACCORDINGLY	This drawing is the exclusive property of Automation & Electronics, Inc., and is loaned to the recipient for their confidential use only. As consideration the recipient agrees that it will not be used in any manner detrimental to the interests of Automation & Electronics, Inc., also that it shall be returned upon request, and shall not be reproduced, disposed of, or altered in any way without the written consent of Automation & Electronics, Inc.	(307) 234-9311 FAX (307) 234-9438 WEBSITE: <a href="http://www.autoelect.com">http://www.autoelect.com</a> EMAIL: <a href="mailto:sales@autoelect.com">sales@autoelect.com</a>	 <b>AUTOMATION &amp; ELECTRONICS, INC.</b> CASPER WYOMING	TITLE:  <b>ARC POLYMER PLANT ANALOG INPUTS</b>  <b>REMOTE I/O PANEL</b>	CUSTOMER: <b>FABRICATION TECHNOLOGIES, INC.</b>				
210/28/14		UPDATES		RB	KM	SMT	KM						SHEET 10 OF 13		DRAWING NUMBER:		REV.
18/6/14		PARTS REVIEW		CW	KM	P.O. NO.:							D-29894				4
411/19/14		UPDATES		RB	KM	SCALE:											
NO. DATE		REVISION		BY		DR.		SCALE: NONE		DATE: 11/19/14			CAD FILE: D29894-10-AI-WI		JOB NO.: 7103-03_08		




SHOP AS-BUILT

3 11/6/14 UPDATES RB KM		DESIGNED	DRAFTED	IF THIS BAR DOES NOT EQUAL ONE INCH ADJUST SCALES ACCORDINGLY	This drawing is the exclusive property of Automation & Electronics, Inc., and is loaned to the recipient for their confidential use only. As consideration the recipient agrees that it will not be used in any manner detrimental to the interests of Automation & Electronics, Inc., also that it shall be returned upon request, and shall not be reproduced, disposed of, or altered in any way without the written consent of Automation & Electronics, Inc.	PHONE (307) 234-9311 FAX (307) 234-9438 WEBSITE: http://www.autoelect.com EMAIL: sales@autoelect.com		AUTOMATION & ELECTRONICS, INC. CASPER WYOMING	TITLE:  ARC POLYMER PLANT ANALOG INPUTS  REMOTE I/O PANEL	CUSTOMER: FABRICATION TECHNOLOGIES, INC.						
2 10/28/14 UPDATES RB KM		SMT KM											P.O. NO.:			
1 8/6/14 PARTS REVIEW CW KM		SCALE:														
4 11/19/14 UPDATES RB KM		SCALE:														
NO. DATE REVISION		BY	DR.	NONE												
CAD FILE: D29894-11-AI-WI		DATE: 11/19/14														
										SHEET 11 OF 13		DRAWING NUMBER:		REV.		
												JOB NO.: 7103-03_08		D-29894		4



SHOP AS-BUILT

3	11/6/14	UPDATES	RB	KM	DESIGNED	DRAFTED	IF THIS BAR DOES NOT EQUAL ONE INCH ADJUST SCALES ACCORDINGLY	This drawing is the exclusive property of Automation & Electronics, Inc., and is loaned to the recipient for their confidential use only. As consideration the recipient agrees that it will not be used in any manner detrimental to the interests of Automation & Electronics, Inc., also that it shall be returned upon request, and shall not be reproduced, disposed of, or altered in any way without the written consent of Automation & Electronics, Inc.	PHONE (307) 234-9311 FAX (307) 234-9438 WEBSITE: <a href="http://www.autoelect.com">http://www.autoelect.com</a> EMAIL: <a href="mailto:sales@autoelect.com">sales@autoelect.com</a>		AUTOMATION & ELECTRONICS, INC.  CASPER WYOMING	TITLE:  ARC POLYMER PLANT ANALOG OUTPUTS  REMOTE I/O PANEL	CUSTOMER:  FABRICATION TECHNOLOGIES, INC.	
2	10/28/14	UPDATES	RB	KM	SMT	KM								P.O. NO.:
1	8/6/14	PARTS REVIEW	CW	KM										
4	11/19/14	UPDATES	RB	KM										
NO.		DATE	REVISION		BY	DR.	SCALE:							
CAD FILE:		D29894-12-A0-WI		DATE:		11/19/14		NONE						



