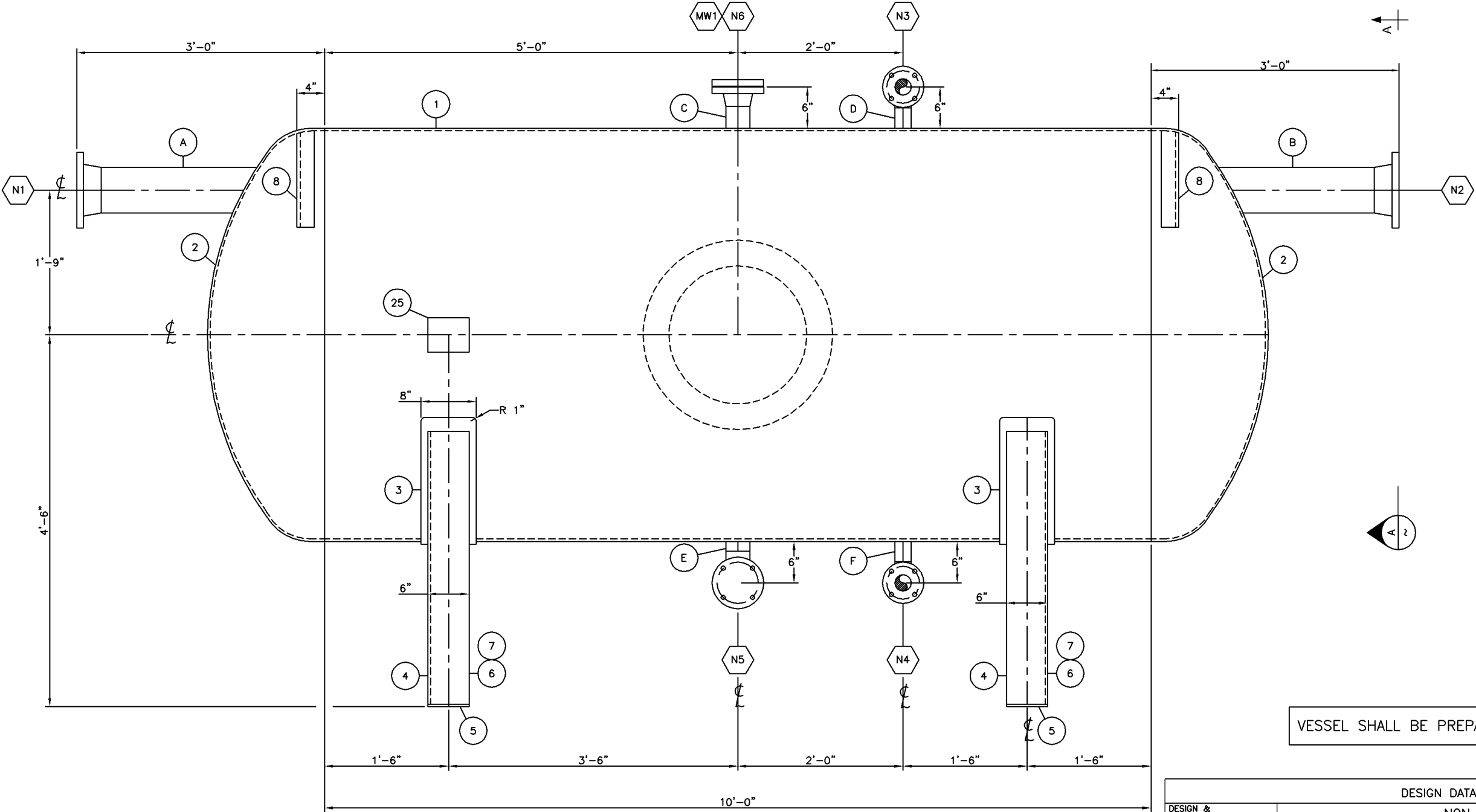


1	2	4	7	9	10	11	12	13	18
CIRCS. & LONG. SEAMS	NOZZLE	OTHER	STRAIGHT BORE NOZZLES	OTHER ATTACHMENTS	TACK WELDS	HILL-SIDE CONNECTION	ATTACHMENTS	NAME PLATE	STRUCTURAL FLANGE
WP PFI-2 or PFI-5 PFI-2,5 AS WELDED	WP PFI-1 PFI-1 AS WELDED	WP PFI-1 PFI-1 AS WELDED	WP PFI-2 or PFI-5 PFI-2,5 AS WELDED	WP PFI-2 or PFI-5 PFI-2,5 AS WELDED	WP PFI-1 PFI-1 AS WELDED	WP PFI-1 PFI-1 AS WELDED	WP PFI-1 PFI-1 AS WELDED	WP PFI-1 PFI-1 AS WELDED	WP PFI-1 PFI-1 AS WELDED



CUT LENGTHS

- A= 1'-11<sup>3</sup>/<sub>8</sub>"
- B= 1'-11<sup>3</sup>/<sub>8</sub>"
- C= 4"
- D= 3<sup>11</sup>/<sub>8</sub>"
- E= 1<sup>1</sup>/<sub>8</sub>"
- F= 3<sup>1</sup>/<sub>4</sub>"
- G= 1'-1<sup>3</sup>/<sub>8</sub>"

VESSEL SHALL BE PREPARED FOR INTERNAL COATING

C6-2592 (X1) UNIT

DESIGN DATA				
DESIGN & CONSTRUCTION	NON-CODE			
MDMT	-20°F			
MAWP	14.9 PSI	103 KPa	SERIAL	C6-2592
DESIGN TEMPERATURE	100 °F	38°C	CRN NO.	N/A
HYDRO PRESSURE	75 PSI	448 KPa	CRN DWG.	N/A
CORROSION ALLOWANCE	0.125"	3.2mm	YEAR BUILT	2006
VOLUME	213.356 CU.FT	6.098 CU.M	INSPECTION	N/A
RADIOGRAPHY	NO		APPROX SHIPPING WEIGHT	4500
STRESS RELIEVE	NO		FINAL JOINT EFF.	N/A

DIMENSIONAL TOLERANCES

THICKNESS:	+0.25", -0.0"
LOCATION:	+0.25", -0.25"
PROJECTION:	+0.25", -0.25"
SHELL LENGTH	+1.0", -1.0"

No.	DATE	REVISIONS	BY	APP.
1	JAN 26/07	CHANGED TO NON CODE VES. & IFC	DZ	
0	AUG 29/06	ISSUED FOR CONSTRUCTION	DZ	

THIS DRAWING IS THE PROPERTY OF PETRO-FIELD INC. AND LOANED TO THE RECIPIENT FOR HIS CONFIDENTIAL USE ONLY. IN CONSIDERATION OF THE LOAN OF THIS DRAWING, THE RECIPIENT PROMISES AND AGREES THAT IT SHALL NOT BE USED IN ANY WAY DETRIMENTAL TO THE INTEREST OF PETRO-FIELD INC. THAT IT SHALL BE RETURNED UPON REQUEST, AND THAT IT SHALL NOT BE REPRODUCED, COPIED, LENT OR OTHERWISE DIRECTLY OR INDIRECTLY, NOR USED FOR ANY PURPOSE OTHER DISPOSED OF THAN THAT INTENDED WITHOUT THE WRITTEN PERMISSION OF PETRO-FIELD INC.



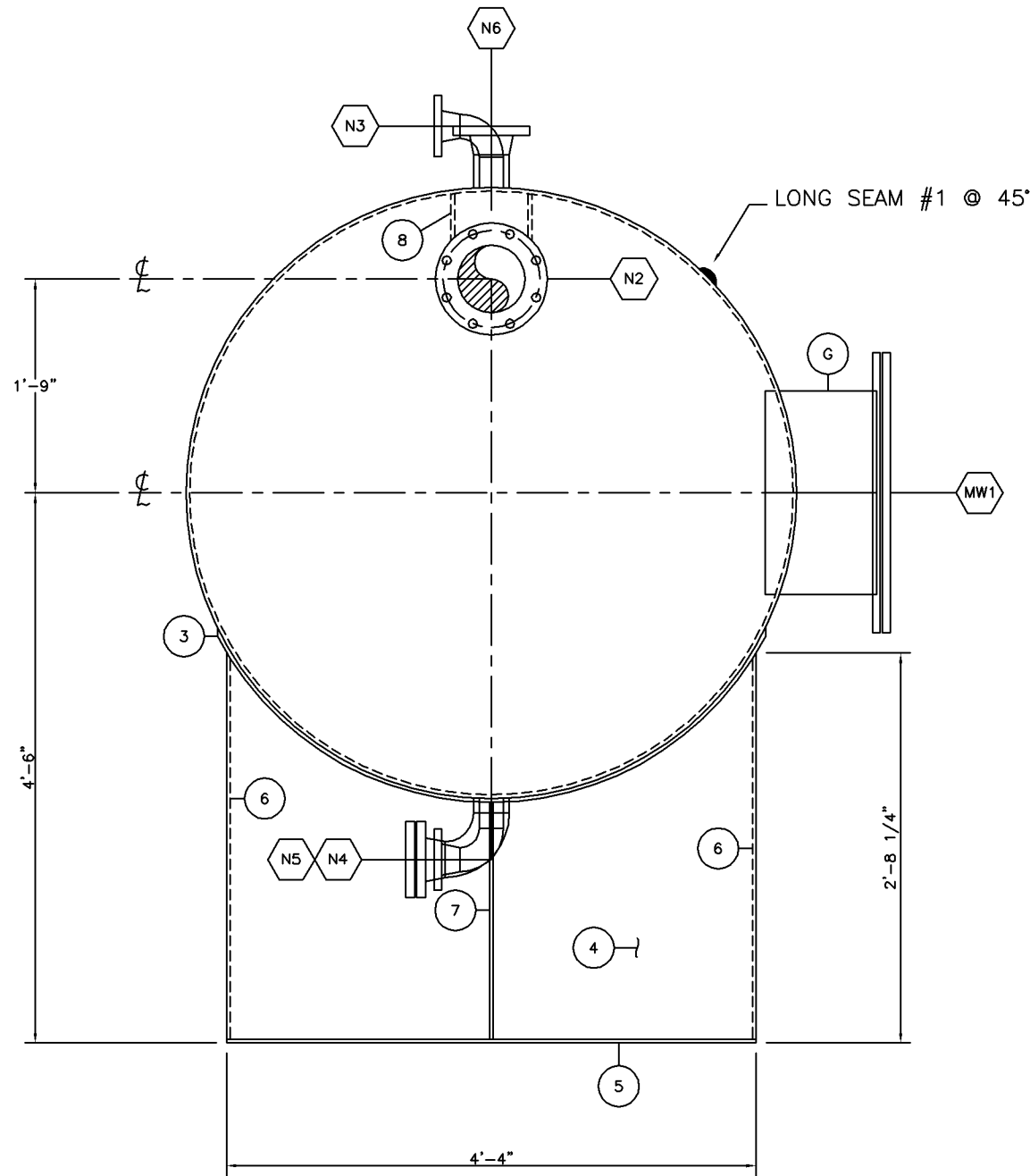
PETRO FIELD INDUSTRIES INC

3236-50 Ave. SE, Calgary, Alberta T2B 3A3  
Ph: 244-3333 Fax: 245-1821

CLIENT	PFI STOCK		
PROJECT	60" O.D. x 10'-0" S/S TANK		
TITLE	40 BBL FLARE KNOCKOUT UNIT		
SCALE	JOB No.	C6-2592	DWG. No. C6-2592-VES-01
1 1/2"=1'			

NOTES:

- 1. ALL WELDS ARE 1/4" UNLESS SPECIFIED
- 2. SCF= SQUARE CUT FLUSH 0" TO 1/2"
- CF= CONTOUR FLUSH



VIEW 'A-A'

NOTES:

- ALL WELDS ARE 1/4" UNLESS SPECIFIED
- SCF= SQUARE CUT FLUSH 0" TO 1/2"
- CF= CONTOUR FLUSH

No.	DATE	REVISIONS	BY	APP.
1	JAN 26/07	CHANGED TO NON CODE VES. & IFC	DZ	
0	AUG 29/06	ISSUED FOR CONSTRUCTION	DZ	

THIS DRAWING IS THE PROPERTY OF PETRO-FIELD INC. AND LOANED TO THE RECIPIENT FOR HIS CONFIDENTIAL USE ONLY. IN CONSIDERATION OF THE LOAN OF THIS DRAWING, THE RECIPIENT PROMISES AND AGREES THAT IT SHALL NOT BE USED IN ANY WAY DETRIMENTAL TO THE INTEREST OF PETRO-FIELD INC. THAT IT SHALL BE RETURNED UPON REQUEST, AND THAT IT SHALL NOT BE REPRODUCED, COPIED, LENT OR OTHERWISE DIRECTLY OR INDIRECTLY, NOR USED FOR ANY PURPOSE OTHER PERMISSION OF PETRO-FIELD INC.

BILL OF MATERIAL					
ITEM	QTY	SIZE	DESCRIPTION	SCH.	MAT'L SPEC
1	1	60" O.D.	SHELL- PLATE (0.375" THK.) x 10'-0" LG.	-	SA-516-70N
2	2	60" O.D.	HEAD- 2:1 SEMI-ELLIPTICAL (0.375" THK.) (0.3125 MIN.)	-	SA-516-70N
3	2	-	PLATE- 0'-8" W x 5'-7" L x 3/8" THK. ROLLED TO 60" I.D.	-	SA-36/44W
4	2	-	PLATE- 4'-3 1/4" W x 2'-8 1/4" L X 3/8" THK. x CTS	-	SA-36/44W
5	2	-	PLATE- 4'-4" W x 0'-6" L X 3/8" THK.	-	SA-36/44W
6	4	-	PLATE- 2'-8 1/4" W x 0'-5 5/8" L X 3/8" THK.	-	SA-36/44W
7	2	-	PLATE- 1'-11 1/4" W x 0'- 5 5/8" L X 3/8" THK.	-	SA-36/44W
8	2	-	CHANNEL- 8x18.75 x 1'-2" LG.	-	SA-36
9	2	6"	FLANGE- 150cl RFWN	STD	SA-105N
10	2	6"	PIPE- SMLS (0.280" THK) SEE CUT LENGTH CHART	STD	SA-106-B
11	2	3"	FLANGE- 150cl RFWN	XH	SA-105N
12	2	3"	PIPE- SMLS (0.300" THK.) SEE CUT LENGTH CHART	XH	SA-106-B
13	1	3"	ELBOW 90# L.R. BW	XH	SA-234-WPB
14	2	2"	FLANGE- 150cl RFWN	160	SA-105N
15	2	2"	PIPE- SMLS (0.343" THK.) SEE CUT LENGTH CHART	160	SA-106-B
16	2	2"	ELBOW- 90# L.R. BW	160	SA-234-WPB
17	1	20"	FLANGE- 3/4" THK STRUCTURAL	-	SA-36/44W
18	1	20"	BLIND- 3/4" THK. STRUCTURAL	-	SA-105N
19	1	20"	PIPE- SMLS (0.375" THK.) SEE CUT LENGTH CHART	STD	SA-106-B
20	2	-	STUDS- 5/8"φ x 3 1/2" CW/2 NUTS-4/SET	-	A193 B7M/A194 2HM
21	2	3"	GASKET- 150cl RF FLEXITALLIC 1/8" THK.	-	316L SS
22	1	-	STUDS- 1 1/8"φ x 6 3/4" CW/2 NUTS-20/SET	-	A193 B7M/A194 2HM
23	2	20"	GASKET- 150cl RF FLEXITALLIC 1/8" THK.	-	316L SS
24	2	3"	BLIND- 150cl RF	-	SA-105N
25	1	-	NAMEPLATE BRACKET C/W NAMEPLATE	-	SA-36/44W

VESSEL SHALL BE PREPARED FOR INTERNAL COATING

C6-2592 (X1) UNIT

NOZZLE SCHEDULE						FILLET WELD SIZE			PROJECTION		ITEM
MARK	SIZE	RATING	TYPE	SERVICE	W.D	W41	W42	W43	INT. PROJ.	EXT. PROJ.	
N1	6"	150cl	RFWN	INLET	11,7	3/8"	-	-	SCF	SEE DWG.	9,10
N2	6"	150cl	RFWN	OUTLET	11,7	3/8"	-	-	SCF	SEE DWG.	9,10
N3	2"	150cl	RFWN	CAGE CONN.	2,7	3/8"	-	-	SCF	SEE DWG.	14,15,16
N4	2"	150cl	RFWN	CAGE CONN.	4,7	3/8"	-	-	CF	SEE DWG.	14,15,16
N5	3"	150cl	RFWN	DRAIN	4,7	3/8"	-	-	CF	SEE DWG.	11,12,13,20,21,24
N6	3"	150cl	RFWN	SPARE	2,7	3/8"	-	-	SCF	6"	11,12,20,21,24
MW1	20"	150cl	RFSO	MANWAY	2,18	3/8"	3/8"	-	1"	10#	17,18,19,22,23

DESIGN DATA			
DESIGN & CONSTRUCTION		NON-CODE	
MDMT	-20°F		
MAWP	14.9 PSI	103 KPa	SERIAL
DESIGN TEMPERATURE	100 °F	38°C	CRN NO:
HYDRO PRESSURE	75 PSI	448 KPa	CRN DWG:
CORROSION ALLOWANCE	0.125"	3.2mm	YEAR BUILT
VOLUME	218.356 CU.FT	6.098 CU.M	INSPECTION
RADIOGRAPHY	NO		APPROX SHIPPING WEIGHT
STRESS RELIEVE	NO		FINAL JOINT EFF.



PETRO FIELD INDUSTRIES INC

3236-50 Ave. SE, Calgary, Alberta T2B 3A3  
Ph: 244-3333 Fax: 245-1821

CLIENT			
PFI STOCK			
PROJECT			
60" O.D. x 10'-0" S/S TANK			
TITLE			
40 BBL FLARE KNOCKOUT UNIT			
SCALE	JOB No.	DWG. No.	
1 1/2"=1'	C6-2592	C6-2592-VES-02	