

2 INSTALLATION

2.1 Dimension drawings (Figs. 5)

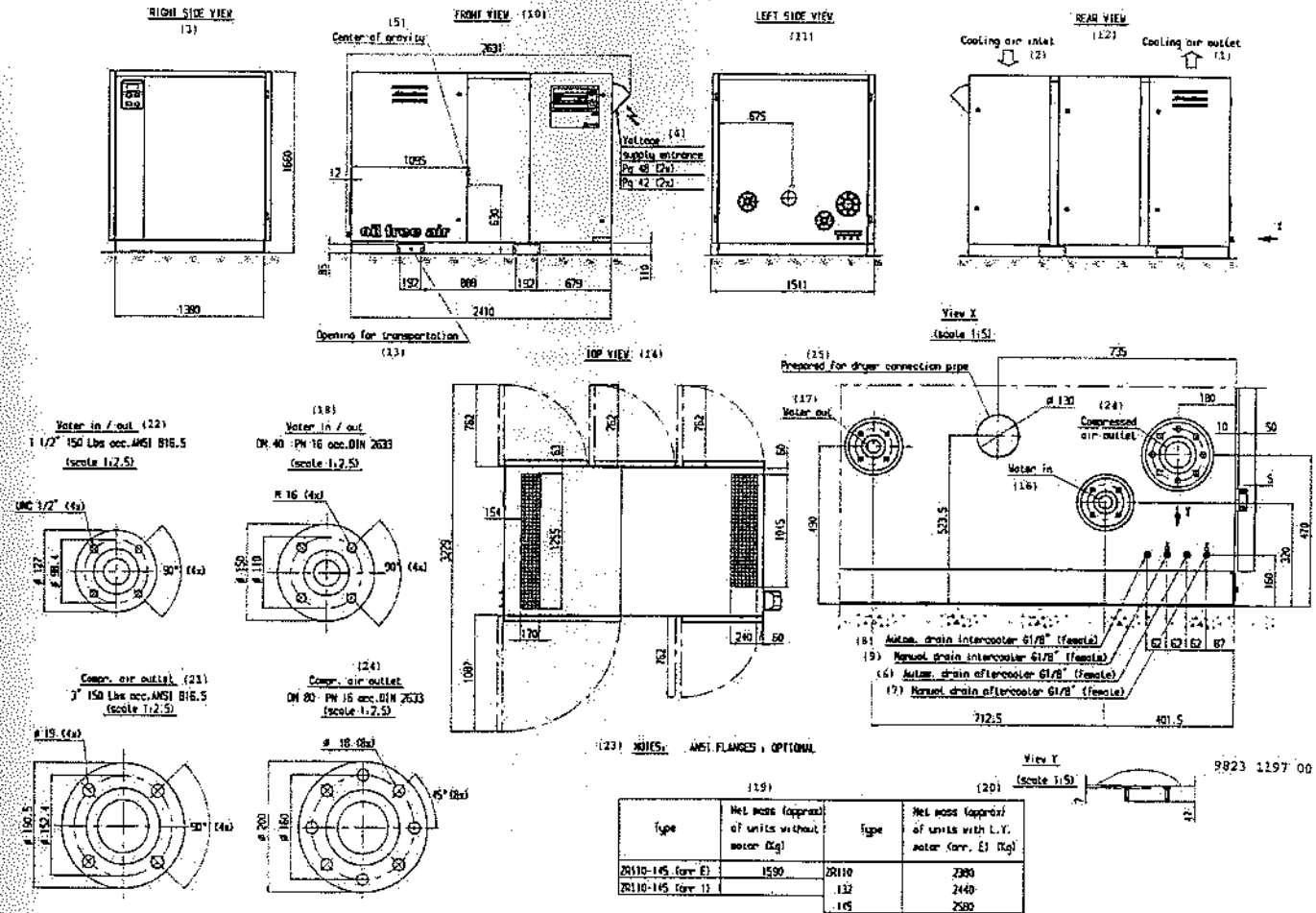


Fig. 5a. Dimension drawing, ZR110-145

- (1) Cooling air outlet
- (2) Cooling air inlet
- (3) Right side view
- (4) Voltage supply entrance
- (5) Centre of gravity
- (6) Automatic drain aftercooler
- (7) Manual drain aftercooler
- (8) Automatic drain intercooler
- (9) Manual drain intercooler
- (10) Front view
- (11) Left side view
- (12) Rear view
- (13) Opening for transportation
- (14) Top view
- (15) Prepared for dryer connection pipe
- (16) Water inlet
- (17) Water outlet
- (18) Water in/out
- (19) Net mass without motor (kg), approx.
- (20) Net mass with low-voltage motor (kg), approx.
- (21) Compressed air outlet (see Note)
- (22) Water in/out (see Note)
- (23) Note: ANSI flanges are optional
- (24) Compressed air outlet

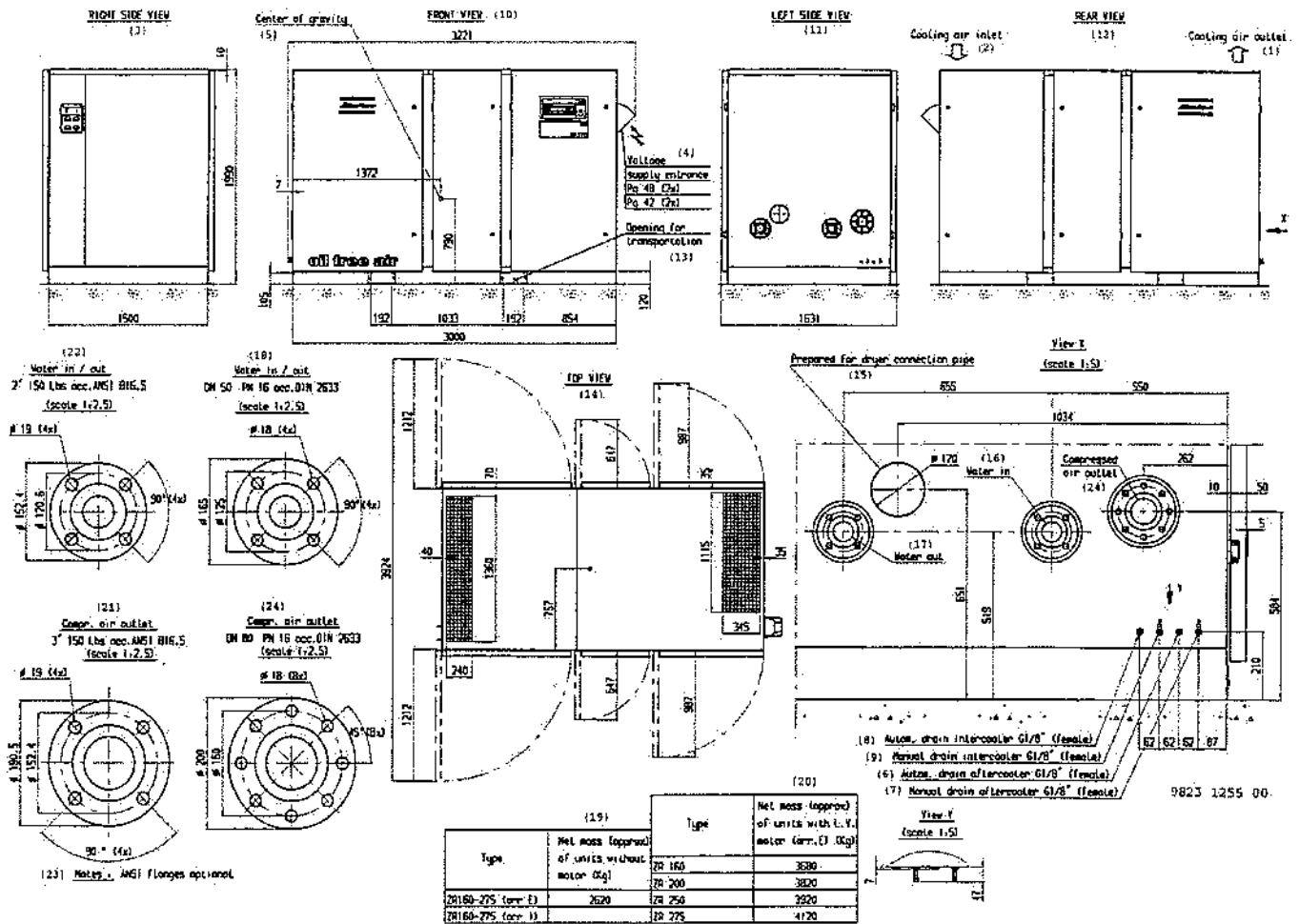


Fig. 5b. Dimension drawing, ZR160-275

2.2 Installation proposal (Fig. 6)

Ref. Description

1. Install the compressor on a level floor suitable for taking the weight of the compressor. Recommended minimum distance between the top of the bodywork and the ceiling: 1200 mm.
2. Remove the plastic plug (if provided) from the compressor air outlet pipe and install an air outlet valve. See Figs. 5 for the dimensions. Close the valve and connect it to the air net.
3. The maximum total length of the delivery pipe can be calculated as follows:

$$L = \frac{\Delta P \times d^5 \times P}{450 \times Q_c^{1.85}}$$

Ref. Description

- L = length of delivery pipe in m
 - ΔP = the maximum allowable pressure drop (recommended 0.1 bar)
 - d = inner diameter of the delivery pipe in mm
 - P = the absolute pressure at the compressor outlet in bar(a)
 - Q_c = free air delivery of the compressor in l/s
4. The inlet grids and ventilation fan should be installed in such a way that any recirculation of cooling air to the compressor is avoided. The air velocity to the grids should be limited to 5 m/s.

The temperature of the intake air should be:

- minimum: 0°C
- maximum: 40°C