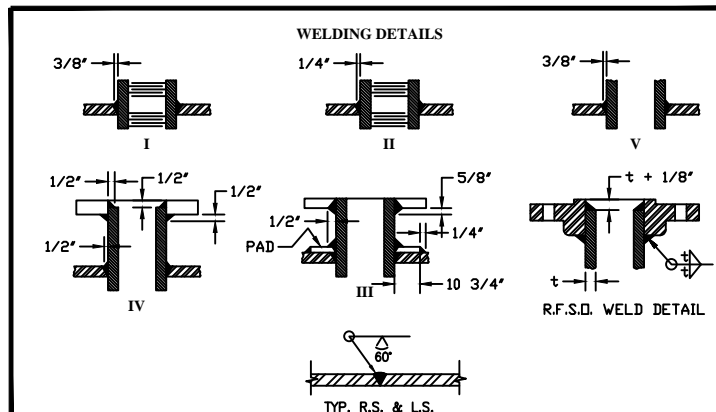


NOTE:
SEE DRAWING 2 OF 2 FOR BILL OF MATERIAL
AND AUXILIARY VIEWS & DETAILS

TAG	QTY.	SIZE	TYPE	RATING	MATERIAL	O.S.	LS.	NECK	WELD DETL.	SERVICE & REMARKS
N18C-D	2	4"	NPS	----	SA-106B	4"	5/8"	#60	V	ANODE
N18A-B	2	4"	R.F.S.O.	150#	SA-106B	6"	1/4"	#59	V	ANODE
N17	1	18"	SHOP-MADE FLG.	----	SA-516-70	8"	1/2"	#54	IV	MANWAY/SIPHON DRAIN
N16	1	18"	SHOP-MADE FLG.	----	SA-516-70	8"	1/2"	#54	IV	MANWAY
N15	1	---	SHOP-MADE FLG.	----	SA-516-70	6"	1/2"	#41	III	FIREBOX MANWAY
N14	1	2"	CPLG. (F.)	3000#	SA-105	1 1/2"	1/4"	N/A	I	RELIEF
N13A-B	2	1/2"	CPLG. (F.)	3000#	SA-105	1"	≈9/16"	N/A	II	LEVEL GAUGE
N12A-B	2	1/2"	CPLG. (F.)	3000#	SA-105	1"	≈9/16"	N/A	II	LEVEL GAUGE
N11A-B	2	1/2"	CPLG. (F.)	3000#	SA-105	1"	≈9/16"	N/A	II	LEVEL GAUGE
N10	1	1"	CPLG. (F.)	3000#	SA-105	1"	≈15/16"	N/A	II	THERMOSTAT
N9	1	2"	CPLG. (H.)	3000#	SA-105	1"	1/8"	N/A	I	LOW LEVEL CONTROL
N8	1	1/2"	CPLG. (F.)	3000#	SA-105	1"	≈9/16"	N/A	II	PRESSURE INDICATOR
N7	1	3/4"	CPLG. (F.)	3000#	SA-105	1"	≈11/16"	N/A	II	THERMOMETER
N6	1	4"	CPLG. (F.)	3000#	SA-105	1"	≈2 3/4"	N/A	I	SIPHON DRAIN
N5	1	2"	CPLG. (H.)	3000#	SA-105	1"	1/8"	N/A	I	GAS EQUALIZER
N4	1	4"	CPLG. (H.)	3000#	SA-105	1"	1/4"	N/A	I	WATER OUTLET
N3	1	4"	CPLG. (H.)	3000#	SA-105	1"	1/4"	N/A	I	GAS OUTLET
N2	1	4"	CPLG. (H.)	3000#	SA-105	1"	1/4"	N/A	I	OIL OUTLET
N1	1	4"	CPLG. (H.)	3000#	SA-105	1"	1/4"	N/A	I	INLET



DESIGN INFORMATION

DESIGN PRESSURE: 125 P.S.I.G.
HYDROSTATIC TEST PRESSURE: 163 P.S.I.G. HOLDING TIME: 30 MINS.
SHELL THICKNESS: 3/8 IN. HEAD THICKNESS: 3/8 IN.
APPROXIMATE DRY WEIGHT: 14,000 LBS.
APPROXIMATE OVERALL VESSEL VOLUME CAPACITY: 8,500 GALS.

NOTES

- ALL INTERNAL WELDS GROUND FOR COATING.
- FULL INTERIOR TO BE SSPC-SP-10 SANDBLASTED, COATED WITH NOVA-PLATE UHS 15-20 MIL THICKNESS, AND HOLIDAY TESTED.
- EXTERIOR PRIMED AND PAINTED SANDSTONE BROWN.
- ALL INTERNAL BOLTS, NUTS, AND FLAT WASHERS TO BE STAINLESS STEEL.
- ALL FLANGES TO BE TWO-HOLED UNLESS OTHERWISE SPECIFIED.
- THE EDGES OF ALL SLOTS & HOLES ON INTERNAL PARTS ARE TO BE GROUND OFF WITH A RADIUS OF 1/4" FOR BETTER INTERNAL COATING.
- ALL CORNER EDGES OF INTERNAL PARTS ARE TO BE GROUND OFF WITH A RADIUS OF 1/4" FOR BETTER INTERNAL COATING.
- INSIDE PROJECTIONS AND WELD SIZES ARE TO BE MINIMUM.
- FIRE TUBE TO BE SSPC-SP-10 SANDBLASTED, EXTERNALLY COATED WITH CORCHEM 239 4-6 MIL THICKNESS, AND HOLIDAY TESTED.

REVISION HISTORY				
No.	DATE	DESCRIPTION	BY	CHK.
0	10/08/18	DRAWING ISSUED FOR APPROVAL	DM	

APPROVED FOR PRODUCTION		
QA MANAGER SIGNATURE	DATE	
CUSTOMER: MDC TEXAS ENERGY, LLC		
JOB NO.: N/A		
DESCRIPTION: MDC-0820-125-HT-V-NC		8'-0" O.D. x 20'-0" S/S Vertical Heater Treater
SCALE: N.T.S.		
SHEET: 1 OF 2		
REVISION: 0	DATE: 10/08/18	DRAWN: DM

