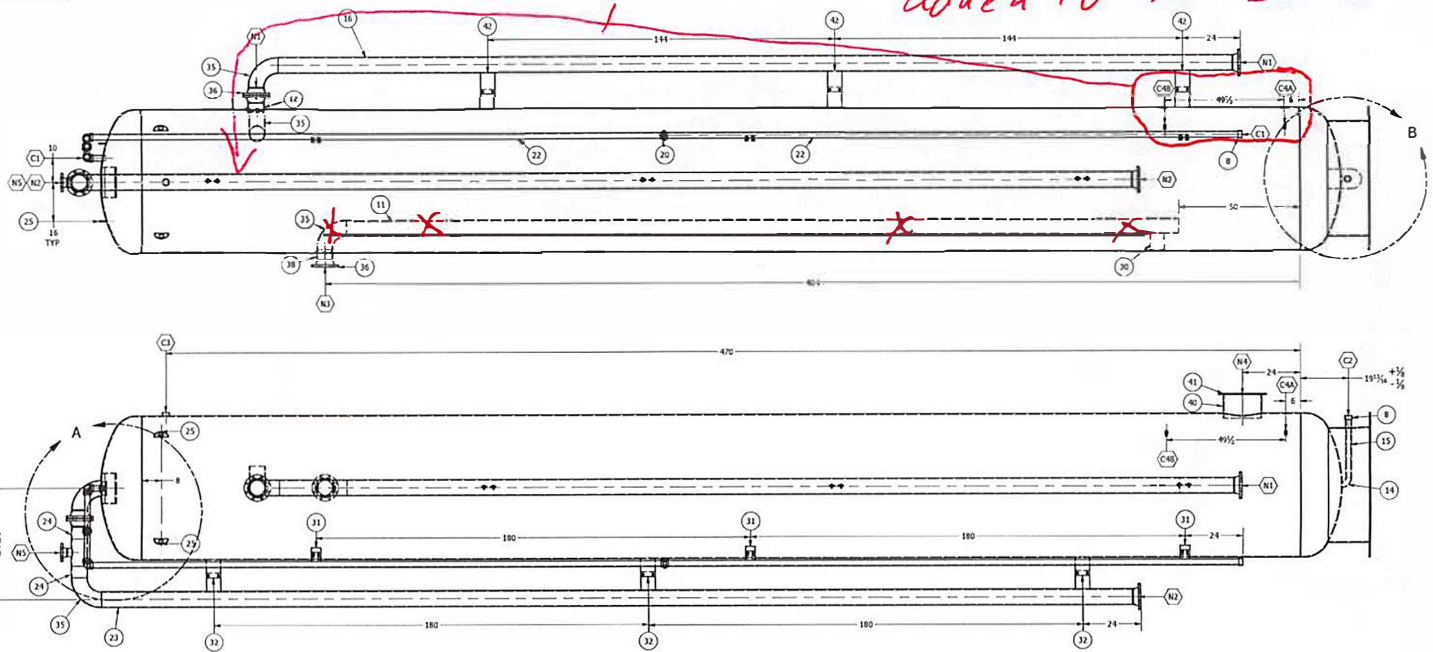


Elevation

would like another set of site glass added to top section



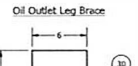
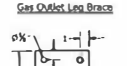
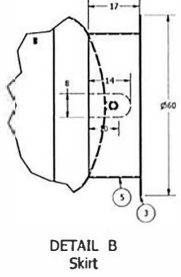
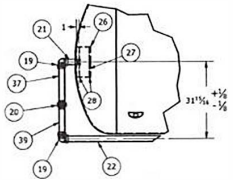
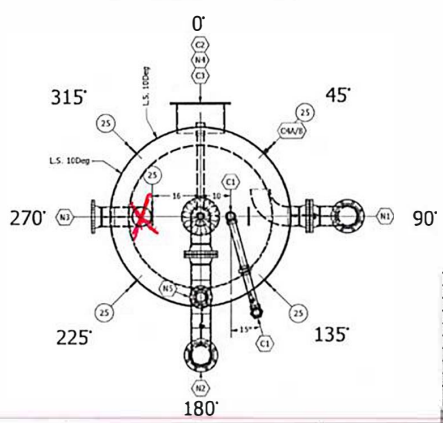
ITEM	QTY	PART NUMBER	DESCRIPTION
1	1	2 to 1 Ellip Head - 60in OD X .375in THK - TOP	SA-516-70
2	1	2 to 1 Ellip Head - 60in OD X .375in THK	SA-516-70
3	1	Base Ring - 30in OD X 23.25in ID X .375in THK	SA-36
4	1	Shell - 60in OD X 40ft LG X .375in THK	SA-516-70
5	1	Skirt - 60in OD X 17ft LG X .375in THK	ERW
7	2	1/2in F-CHG 3000#	SA-105
8	3	2in HF CLPG 3000#	SA-105
11	345.000 in	ASME B36.10M Pipe 6 - Schedule 40 - 3.625	ERW
12	3.625 in	ASME B36.10M Pipe 6 - Schedule 40 - 3.625	ERW
14	1	ASME B16.9 Long Radius 90 Deg Elbow (Inch) 2 x 0.218	SA-234-WPB
15	24.000 in	ASME B36.10M Pipe 2 - Schedule 40 - 2.4	ERW
16	395.250 in	ASME B36.10M Pipe 6 - Schedule 40 - 395.25	ERW
19	2	ASME B16.11 90 Deg Elbow Socket Weld - Class 3000 2in	SA-105N
20	2	2" Socket Weld Unkn - Taper Seat	SA-105N
21	6.000 in	ASME B36.10M Pipe 2 - Schedule 40 - 6	ERW
22	474.000 in	ASME B36.10M Pipe 2 - Schedule 40 - 237	ERW
23	427.250 in	ASME B36.10M Pipe 6 - Schedule 40 - 427.25	ERW
24	9.750 in	ASME B36.10M Pipe 6 - Schedule 40 - 4.875	ERW
25	6	Lifting Eye - .375in	SA-36
26	1	Mist Pad Can 12.75in OD X 6in Lg X .25in THK	SA-106B
27	1	12.25in OD x 4in THK Mist Pad	MS
28	2	Mist Pad Wagon/Wheel 12.125in OD X .25in THK	SA-36
30	1	Oil Out Brace - 6in X 3.75in X .375in Plate	SA-36
31	6	Leg Brace - 4in X 4in X .375in Plate	SA-36
32	6	Leg Brace - 7.5in X 6in X .375in Plate	SA-36
33	18	AS 2-465 - 1/2 x 1 1/2 UNC	1/2 Bolt
34	18	AS 2-465 - 1/2 UNC(1)	1/2 Nut
35	5	ASME B16.9 Long Radius 90 Deg Elbow (Inch) 6 x 0.28	SA-234-WPB
36	7	ASME B16.5 Flange Welding Neck - Class 150 6	SA-105N
37	16.000 in	ASME B36.10M Pipe 2 - Schedule 40 - 16	ERW
38	4.000 in	ASME B36.10M Pipe 6 - Schedule 40 - 4	SA-106B
39	12.000 in	ASME B36.10M Pipe 2 - Schedule 40 - 12	SA-106B
40	10.000 in	ASME B36.10M Pipe 16 - Schedule 30 - 10	SA-36
41	1	12 Hole Packer	SA-36
42	6	Skirt Brace - 6in W X 8.8125in LG - .375in Plate	SA-36
43	1	ASME B16.9 Reducing Outlet Tee 6 - Schedule 40	SA-234-WPB
44	1	ASME B16.5 Flange Welding Neck - Class 150 3	SA-105N

Notes:

- Ompg Posess: 121 PV
- Damp Temp: 40°F piping
- 100°F (max)
- Unkn'd by: Paul Prohaska, Trn # 162339
- Based on 1.1 SAMP
- Head from: H2
- Corrosion Allowance: Min @ 100°F

Surface	Full	MSF	MSM
Long Seam	or		
Head to Shell	or		
Shell to Head	or		
Head to Shell	or		
Head to Shell	or		

True Orientation



MARK	QTY	SIZE	RATING	TYPE	BORE	O.D. X THK	Mat	SCM	WALL	MAT	O.S.	I.S.	WELD	DETAIL	WELD SIZE	WPS #	SERVICE	Item NO.	MARK
N1	1	6"	CL 150	RFWN		SCH 40	D 28	SA-106B	6"		3/8"	1/4"	1,2				Oil Inlet	12, 16, 35, 36	N1
N2	1	6"	CL 150	RFWN		SCH 40	D 28	SA-106B	6"		3/8"	1/4"	1,2				Gas Outlet	23, 24, 35, 36, 43, 44	N2
N3	1	6"	CL 150	RFWN		SCH 40	D 28	SA-106B	6"		3/8"	1/4"	1,2				Oil Out	11, 35, 36, 38	N3
N4	1	16"	Shop Cut	32 Hole Parker		SCH 30	O 37.5	SA-106B	8"		3/8"	3/8"	1,2				Cleanout	40, 41	N4
N5	1	3"	CL 150	RFWN		SCH 40	D 28	SA-106B	6"		3/8"	1/4"	1,2				Back Pressure Valve	43, 44	N5
C1	1	2"	3000#	SW-CPFG		SA-105	Max	3/8"			3/8"	1/4"	1,2				Sensing Line	8, 19, 20, 21, 22, 37, 39	C1
C2	1	2"	3000#	SW-CPFG		SA-105	Max	3/8"			3/8"	1/4"	1,2				Drain	8, 14, 15	C2
C3	1	2"	3000#	HF-CPFG		SA-105	Max	3/8"			3/8"	1/4"	1,2				Relief	7	C3
C4A/B	2	1/2"	3000#	F-CPFG		SA-105	Max	3/8"			3/8"	1/4"	1,2				Sight Glass	8	C4A/B

DATE: 10/20/2020
 TITLE: 60" X 40" Vapor Recovery Tower - 125 MAWF
 SCALE: 1/8" = 1'-0"
 SHEET 1 OF 1