

CHEVRON DOC # KDU-FKOD440003-TEC-REC-BIL-4400-00094

GENERAL NOTES:

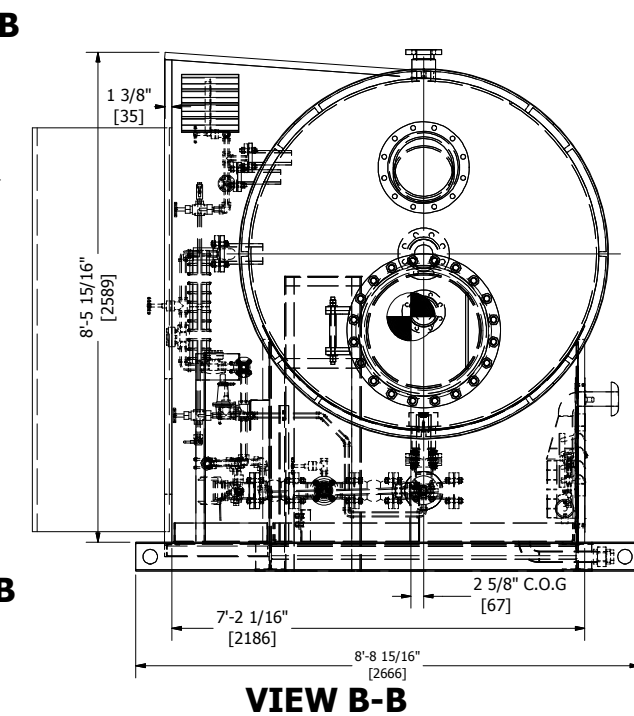
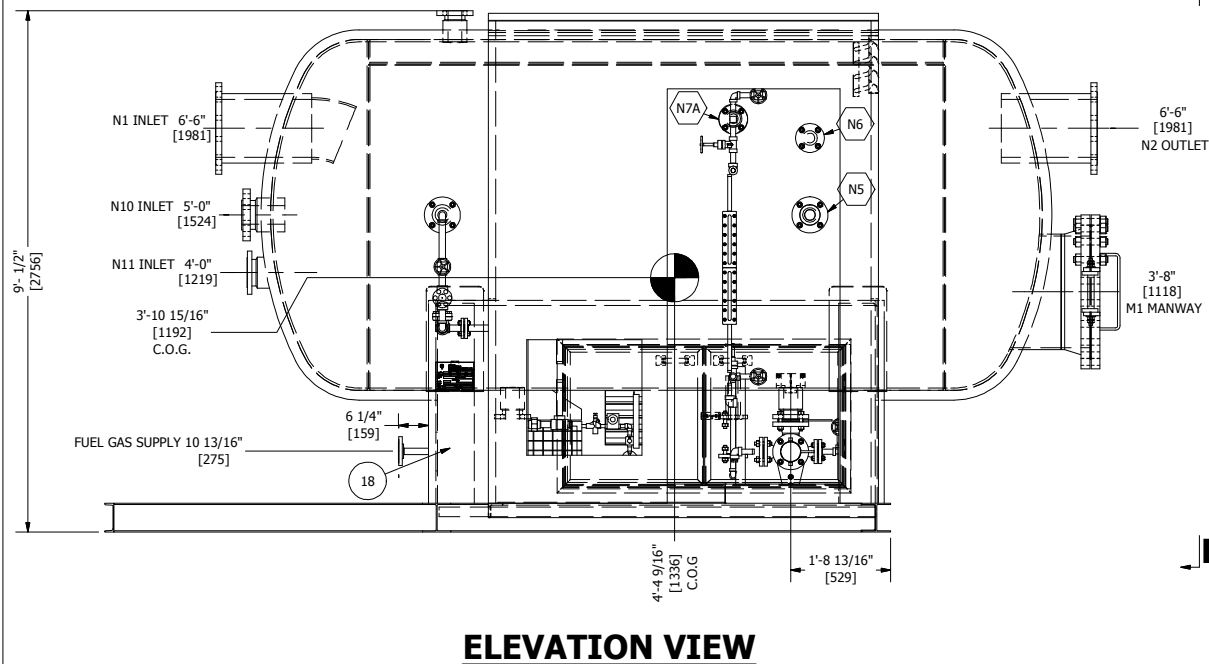
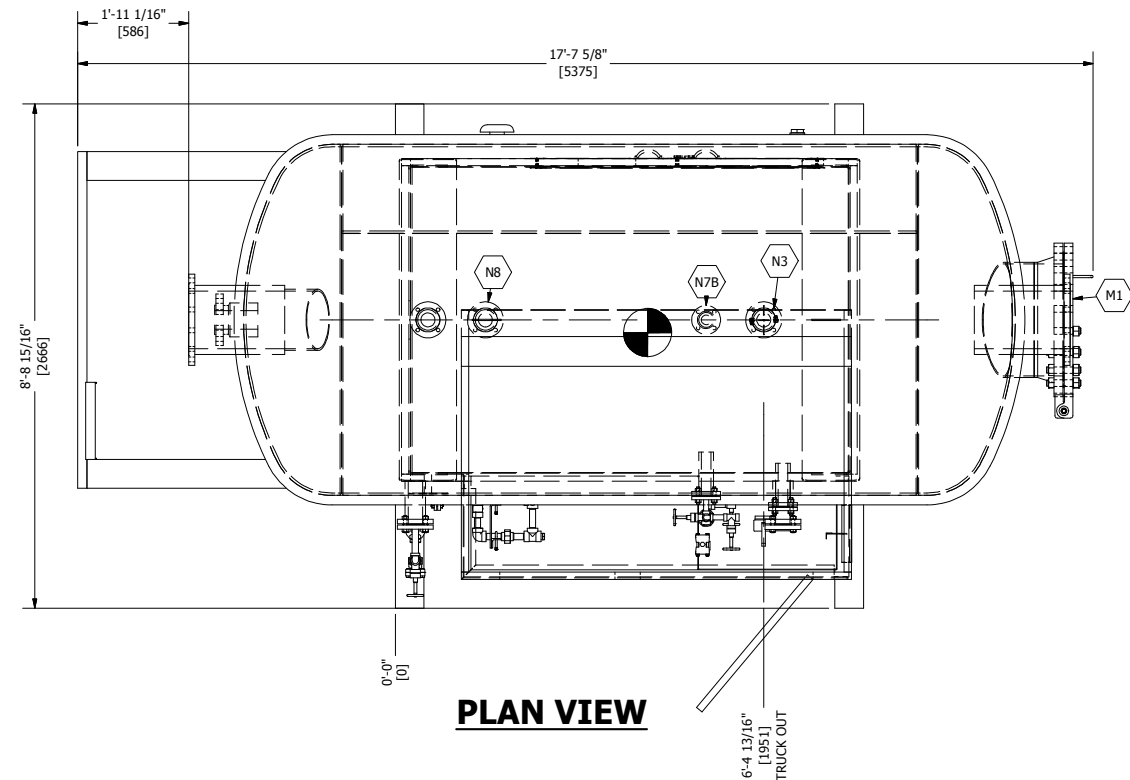
- ALL OPENINGS TO BE COVERED PRIOR TO SHIPPING
- FULL BOLT-UP FOR SHIPPING WILL BE USED - READY FOR SERVICE
- APPROXIMATE SHIPPING WEIGHT: 11,100 LBS
- APPROXIMATE SHIPPING DIMENSIONS: 8'-9" W x 9'-1" H x 17'-8" LG
- RING GASKETS SHALL BE COATED WITH RUST PREVENTIVE GREASE BEFORE INSTALLATION
- FLANGES TO BE PROTECTED AGAINST CORROSION & DAMAGE BY APPLYING STIFF GREASE, AND BY BOLTING ON A WOODEN OR STEEL COVER WITH MIN. OF 4 BOLTS
- A PLASTIC SHEET SHALL BE INSERTED BETWEEN WOODEN COVER AND GREASED FLANGE SURFACE

STEEL PIPING FORGED PRODUCTS SELECT CHEM

MUST MEET CHEVRON AML KDA-0300-PUR-LST-CBU-0000-00001 AML REV3
 SELECT CHEM: As per KDA-0800-PIP-SPC-CBU-0000-00086 RA.2
 MUST MEET NACE MR0175/ISO 15156
 CE = 0.43 MAX
 C = 0.23
 Mn = 1.35
 V max = See Table 2 of KDA-0800-PIP-SPC-CBU-0000-00086 RA.2
 Nb max = See Table 2 of KDA-0800-PIP-SPC-CBU-0000-00086 RA.2
 Cr+Mo+Ni+Cu+V = 0.600 MAX
 P = 0.025
 S = 0.025

STEEL PIPING SEAMLESS PRODUCTS SELECT CHEM

MUST MEET CHEVRON AML KDA-0300-PUR-LST-CBU-0000-00001 AML REV3
 SELECT CHEM: As per KDA-0800-PIP-SPC-CBU-0000-00086 RA.2
 MUST MEET NACE MR0175/ISO 15156
 CE = 0.43 MAX
 C = 0.23
 Mn = 1.35
 V max = See Table 2 of KDA-0800-PIP-SPC-CBU-0000-00086 RA.2
 Nb max = See Table 2 of KDA-0800-PIP-SPC-CBU-0000-00086 RA.2
 Cr+Mo+Ni+Cu+V = 0.600 MAX
 P = 0.025
 S = 0.010



FLEXPRO GASKETS REQUIRED FOR TRUCKOUT SPOOLING

REV	DATE	DESCRIPTION	BY	ENG	PM	APP
A	2019/10/15	ISSUED FOR APPROVAL	RMM	JAM	DG	
0	11/8/2019	ISSUED FOR FABRICATION	AMC	JAM	DG	

BILL OF MATERIALS

ITEM	QTY	REF.	PART No.	DESCRIPTION	LENGTH	MATERIAL	WEIGHT (lbs)
1	1	-	-	VESSEL ASSEMBLY (SEE DRAWING -201 FOR DETAILS)			8086.72
1	1	-	-	SOCKET WELD ASSEMBLY (SEE DRAWING -701 FOR DETAILS)			92.17
3	1	-	-	SKID ASSEMBLY (SEE DRAWING -501 FOR DETAILS)			1503.68
4	1	-	-	ENCLOSURE ASSEMBLY (SEE DRAWING -601 FOR DETAILS)			556.89
5	1	-	-	BUTT WELD SPOOLING (SEE DRAWING -702 FOR DETAILS)			101.42
6	1	-	1-000257	3/4 U-BOLT c/w NUTS		MILD STEEL	0.26
7	3	-	1-000258	1 U-BOLT c/w NUTS		MILD STEEL	0.87
8	1	-	1-000759	3/4 x CL3000 90° THRD ELBOW		SA-350-LF2	2.05
9	5	-	1-000760	1 x CL3000 90° THRD ELBOW		SA-350-LF2	8.57
10	1	-	1-000972	2 x CLASS 150 RF BLIND FLG		SA-350-LF2 CL.1	10.75
11	1	-	1-000978	3" x CLASS 150 RF BLIND FLG		SA-350-LF2 CL.1	21.89
12	1	-	1-001448	2 x CLASS 150 RF HUB BLIND FLG TAPPED TO 1 NPT		SA-350-LF2 CL.1	6.03
13	1	-	1-001701	6" x 8" NAMEPLATE		ALUMINUM	0.17
14	1	-	1-001847	3/4" NIPPLE SCH 160 x 3" LG		SA-333-GR6	0.48
15	8	-	1-001865	1/2" DIA HEX NUT		SA-194-2HM	0.57
16	4	-	1-002615	1/2 DIA x 2 1/2 LG STUD		SA-193-B7M	0.57
17	1	-	1-003011	1 x CL3000 THRD TEE		SA-350-LF2 CL.1	4.82
18	1	-	1-003415	1" PIPE SCH 160 (TBE)	1'-8 1/16"	SA-333-GR6	4.76
19	1	-	1-003415	1" PIPE SCH 160 (TBE)	1'-6 1/8"	SA-333-GR6	4.30
20	1	-	1-003415	1" PIPE SCH 160 (TBE)	4"	SA-333-GR6	0.94
21	1	-	1-003415	1" PIPE SCH 160 (TBE)	2'-1 15/16"	SA-333-GR6	6.16
22	1	-	1-003415	1" PIPE SCH 160 (TBE)	4 13/16"	SA-333-GR6	1.14
23	1	-	1-003415	1" PIPE SCH 160 (TBE)	7 15/16"	SA-333-GR6	1.88
24	1	-	1-003491	1 x CL3000 THRD UNION		SA-350-LF2 CL.1	4.10
25	1	-	1-003801	1/2" NPT HEX HEAD PLUG		SA-350-LF2 CL.1	0.15
26	1	-	1-003802	1 NPT HEX HEAD PLUG		SA-350-LF2 CL.1	0.93
27	1	-	1-003854	3 x CLASS 150 RFTO FLG		SA-350-LF2 CL.1	9.60
28	1	-	1-004138	1/2" DIA x 1 1/2" LG STRUCTURAL HEX BOLT, c/w NUT AND WASHER		SA-325	0.45
29	1	-	1-004300	3 x CLASS 150 SPEC BLIND FLG		SA-516-70N	2.53
30	1	-	1-004892	3 x CLASS 150 RF HUB BLIND FLG TAPPED TO 2 NPT		SA-350-LF2 CL.1	11.33
31	1	-	1-004894	3/4 NPT HEX HEAD PLUG		SA-350-LF2 CL.1	0.51
32	1	-	1-005285	2 NPT HEX HEAD PLUG		SA-350-LF2 CL.1	2.16
33	1	-	1-007264	2 x CL3000 THRD UNION		SA-350-LF2 CL.1	6.79
34	1	-	1-008401	24 x CLASS 150 RF CGI GRAPHITE FILLED GASKET		316SS	6.70
35	5	-	1-008402	2 x CLASS 150 RF CGI GRAPHITE FILLED GASKET		316SS	1.73
36	10	-	1-008408	3 x CLASS 150 RF CGI GRAPHITE FILLED GASKET		316SS	5.31
37	1	-	1-010672	1" NIPPLE SCH 160 x 4" LG		SA-333-GR6	0.94
38	4	-	1-010673	1" NIPPLE SCH 160 x 3" LG		SA-333-GR6	2.82
39	1	-	1-012350	1 x 3/4 x CL3000 THRD REDUCING TEE		SA-350-LF2 CL.1	2.43
40	1	-	1-012926	1 x CLASS 150 RFTO FLG		SA-350-LF2 CL.1	1.97
41	1	-	1-014599	3" CAMLOCK DUST CAP		316L	1.04
42	1	-	1-014600	3" MALE CAMLOCK x FNPT		316L	0.67
43	1	-	1-015228	1/2" PIPE SCH XXH (TBE)	10 11/16"	SA-333-GR6	1.53
44	1	-	1-015228	1/2" PIPE SCH XXH (TBE)	8"	SA-333-GR6	1.14
45	1	-	1-015682	1/2 x CL6000 90° THRD ELBOW		SA-350-LF2 CL.1	1.38
46	1	-	1-015767	1" NIPPLE SCH 160 x 6" LG		SA-333-GR6	1.42
47	1	-	1-017771	1 x CLASS 150 RF CGI GRAPHITE FILLED GASKET		316SS	0.16
48	1	-	1-019381	1/2" NIPPLE SCH XXH x 3" LG		SA-333-GR6	0.43
49	1	-	1-019384	3/4" NIPPLE SCH XXH x 3" LG		SA-333-GR6	1.22
50	112	-	1-022566	5/8" DIA HEX NUT ZINC PLT		SA-194-2HM	14.57
51	48	-	1-022567	5/8" DIA x 3 1/2" LG STUD ZINC PLT		SA-193-B7M	14.96
52	4	-	1-022568	5/8" DIA x 4" LG STUD ZINC PLT		SA-193-B7M	1.42
53	40	-	1-022569	1 1/4" DIA HEX NUT ZINC PLT		SA-194-2HM	35.12
54	20	-	1-022570	1 1/4" DIA x 7" LG STUD ZINC PLT		SA-193-B7M	49.86
55	8	-	1-024438	1/2" DIA HEX NUT ZINC PLT		SA-194-2HM	0.57
56	4	-	1-024439	5/8" DIA x 4 1/4" LG STUD ZINC PLT		SA-193-B7M	1.51
57	5	-	1-025588	3" CL150 KAMPROFILE SIGMA 500 PTFE GASKET			
58	4	-	1-025741	1/2" DIA x 2 3/4" LG STUD ZINC PLT		SA-193-B7M	0.63
59	1	-	1-025864	1 1/2" x CLASS 150 FLEXPRO ZG 316L/PTFE GASKET		316SS	0.24
60	1	-	2-012070	3" x CLASS 150 FLANGE GRABBER (3/8" THK)		SA-36	2.73

STANTEC DOCUMENT PROCESSING STAMP

A - PROCEED I/O - DATA ACCEPTED FOR INFORMATION ONLY

B - PROCEED, CHANGE AS NOTED AND RESUBMIT BY: C - DO NOT PROCEED, CHANGE AS NOTED AND RESUBMIT BY:

RESUBMITAL DATE FOR STATUS B: _____ RESUBMITAL DATE FOR STATUS C: _____

SIGN: M.Y. DATE SIGNED: 2019-11-11

VDDR CODE(S): DM01, DG02, GD11

AUTHORIZATION TO PROCEED DOES NOT WAIVE SUPPLIER'S RESPONSIBILITY OR LIABILITY UNDER THE CONTRACT/PURCHASE ORDER FOR COMPLIANCE WITH THE REQUIREMENTS OF THE DRAWINGS AND SPECIFICATIONS

NOTE: MATERIALS ARE NACE MR0175/ISO 15156 AS PER CHEVRON SELECT CHEMISTRY AND AML REQ'D



BOX 6106
 5815 37 Street
 INNISFAIR, AB
 CANADA
 403-227-7799
 1-888-227-4923
 FAX 227-7796

CHEVRON CANADA LTD.

72" ID x 10' S/S 60 BBL FKOD - TAG: FKOD-4400
 FINAL ASSEMBLY

QUOTE NUMBER: 107948	SALE ORDER: 005676	SIZE
PURCHASE ORDER: 11862693	JOB ORDER:	D
LOCATION: 06-07-062-23 WSM (WASX-W039)	D5250	REV.
DATE: 11/4/2019	DRAWING NO.:	0
SHEET: 1 OF 8	D5250-101	
CRN DWG: N/A		
CRN NUMBER: N/A		

This drawing is property of BILTON WELDING AND MANUFACTURING LTD and is lent to the recipient for their confidential use only. In consideration of the loan of this drawing, the recipient promises and agrees that it shall not be used in any way detrimental to the interests of BILTON WELDING AND MANUFACTURING LTD, that it shall be returned upon request, and shall not be reproduced, copied, lent, or otherwise disposed of, directly or indirectly, without the written consent of BILTON WELDING AND MANUFACTURING LTD.