

STANTEC
DOCUMENT PROCESSING STAMP

A - PROCEED I/O - DATA ACCEPTED FOR INFORMATION ONLY

B - PROCEED, CHANGE AS NOTED AND RESUBMIT BY: C - DO NOT PROCEED, CHANGE AS NOTED AND RESUBMIT BY:

RESUBMITTAL DATE FOR STATUS B: _____ RESUBMITTAL DATE FOR STATUS C: _____

SIGN: **M.Y.** DATE SIGNED: **2019-11-12**

VDDR CODE(S): **DCS05**

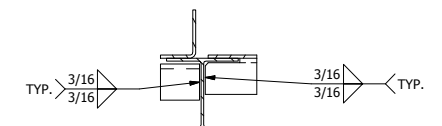
AUTHORIZATION TO PROCEED DOES NOT WAIVE SUPPLIER'S RESPONSIBILITY OR LIABILITY UNDER THE CONTRACT/PURCHASE ORDER FOR COMPLIANCE WITH THE REQUIREMENTS OF THE DRAWINGS AND SPECIFICATIONS

BILL OF MATERIALS

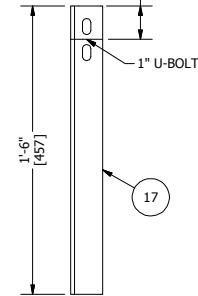
ITEM	QTY	REF.	PART No.	DESCRIPTION	LENGTH	MATERIAL	WEIGHT (lbs)
1	1		1-003659	W6x15	1'-3/4"	G40.21-50W	13.29
2	1		1-003659	W6x15	2'-3 3/4"	G40.21-50W	32.11
3	1		1-003659	W6x15	5'-3 1/2"	G40.21-50W	74.24
4	1		1-003659	W6x15	8'-8 15/16"	G40.21-50W	131.35
5	2		1-003659	W6x15	13'-2 5/8"	G40.21-50W	391.77
6	1		1-000399	C6x8.2	5'-10"	G40.21-44W	48.00
7	1		1-000033	L3x3x3/8	1'-9 3/4"	G40.21-44W	11.66
8	3		1-000033	L3x3x3/8	1'-9 1/4"	G40.21-44W	33.01
9	2		1-000033	L3x3x3/8	5'-3 1/2"	G40.21-44W	76.59
10	1		1-000033	L3x3x3/8	6'-8 9/16"	G40.21-44W	47.12
11	1		1-000024	L2x2x1/4	1'-2"	G40.21-44W	3.76
12	1		1-000024	L2x2x1/4	2'-4 3/16"	G40.21-44W	7.53
13	2		1-000024	L2x2x1/4	5'-1 1/8"	G40.21-44W	32.83
14	1		1-000024	L2x2x1/4	6 1/2"	G40.21-44W	1.70
15	1		1-000024	L2x2x1/4	1'-1/4"	G40.21-44W	3.25
16	1		1-000024	L2x2x1/4	3'-3"	G40.21-44W	10.35
17	2		1-000024	L2x2x1/4	1'-6"	G40.21-44W	9.54
18	1		2-013610	1/4" THK CHECKERPLATE x 62 7/8" W x 90 1/2" LG, c/w 4" DRIP LIP		SA-36	481.77
19	1		2-018647	1/4" THK CHECKERPLATE x 19 1/2" W x 47 1/4" LG		SA-36	65.49
20	1		2-018842	12GA x 19 1/2" W x 29" LG x 4" DEEP CONTAINMENT TRAY		A-1011	27.82
21	1		1-000721	2" x 90° LR BW ELBOW SCH STD/40		SA-420-WPL6	1.44
22	1		1-003418	2" PIPE SCH STD/40 (BOE,TOE)	1'-0"	SA-333-GR6	3.67
23	1		2-013612	[BRK] PUMP SUPPORT 3/16" THK x 5" W x 9" LG		SA-36	7.27
24	1		2-013613	[BRK] HEATER SUPPORT 3/16" THK x 20" W x 12 3/4" LG		SA-36	18.75
25	1		1-001103	2x1/4 FLAT BAR	1'-2"	SA-36	1.99
26	1		2-018687	PIPE SUPPORT BRACKET 1/4" THK x 5-1/2" W x 11-1/16" LG		SA-36	4.22
							1540.52

GENERAL NOTES:

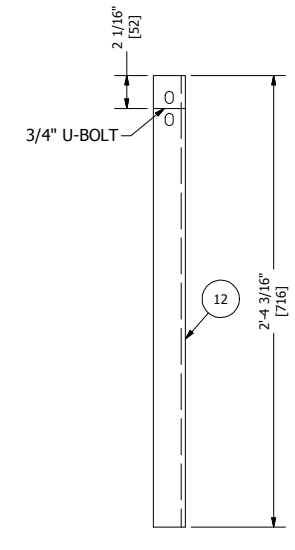
- WELD PROCEDURE: GM-1, SM-1, MC-1
WELDERS AND WELD PROCEDURES QUALIFIED AS PER CSA W59
- MPI: NIL
- RADIOGRAPHY: NIL
- UT: NIL
- SPLICES REQUIRE BILTON ENGINEERING APPROVAL
- SANDBLAST: SSPC-SP6
- PRIMER: EPOXY
- TOPCOAT: URETHANE (COLOUR: QC8315 TAN)
- INSULATION: 2" THK SPRAY FOAM UNDER CHECKER PLATE
- TACK WELD PUMP, HEATER, & PIPE SUPPORTS UNTIL FINAL FIT UP



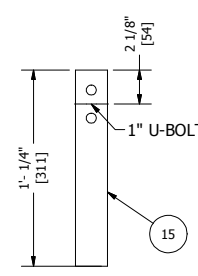
VIEW A-A



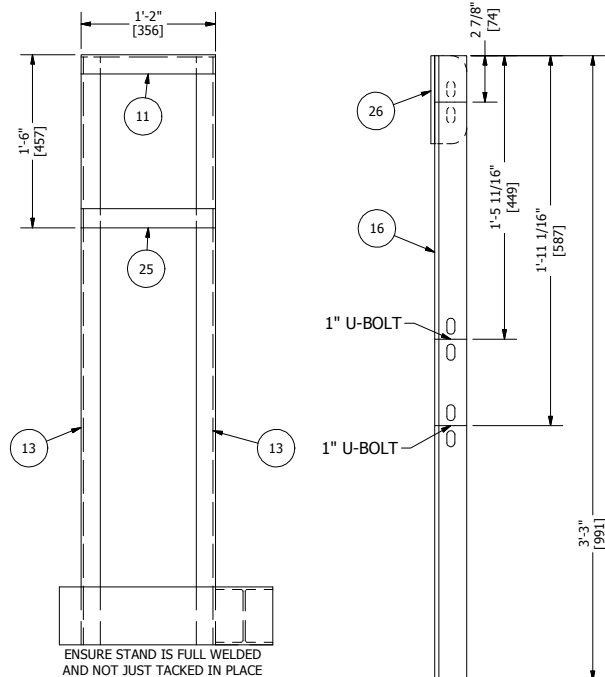
PS5/6 DETAIL



PS2 DETAIL



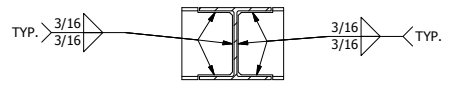
PS3 DETAIL



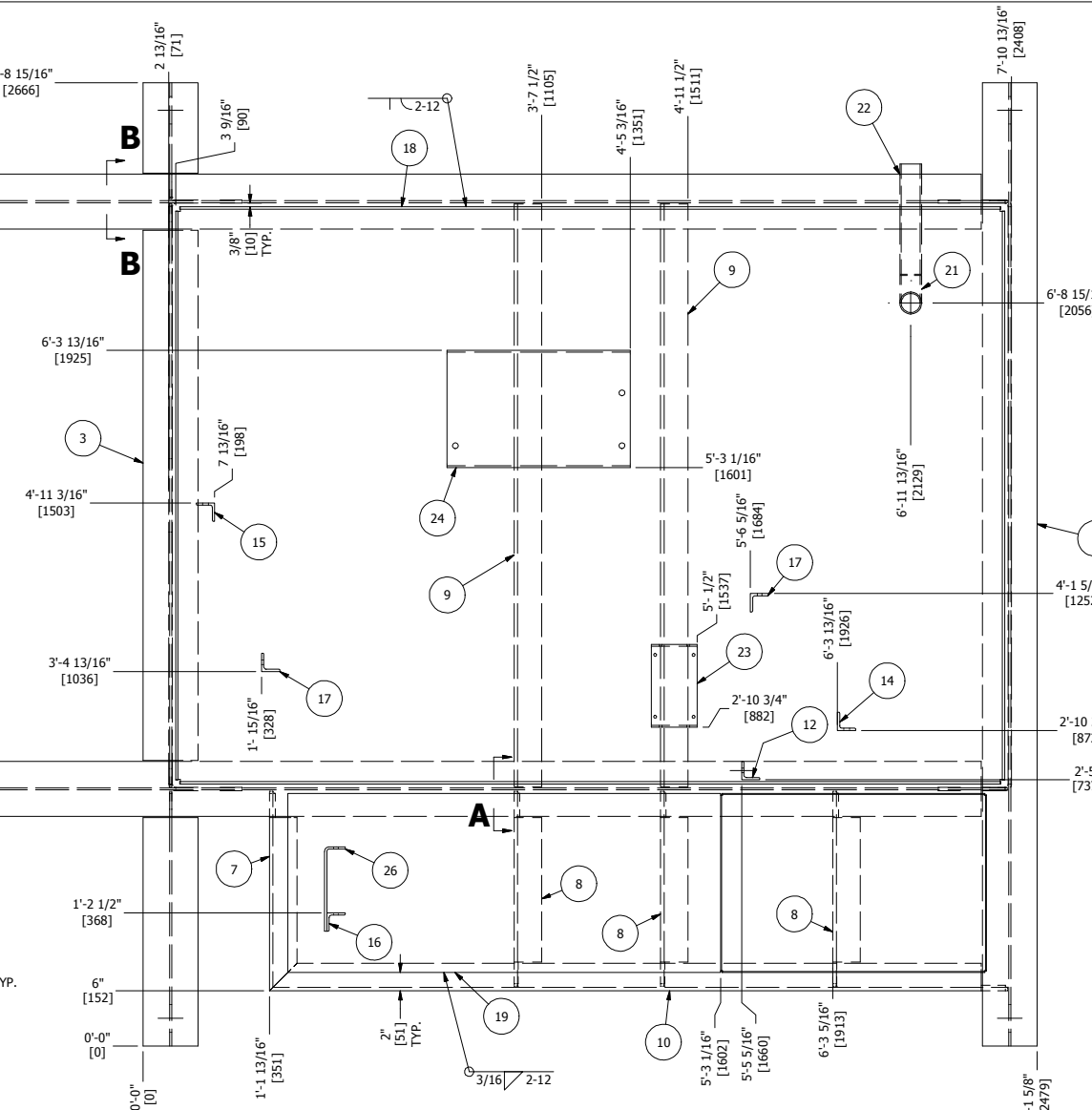
VIEW C-C

PS1 DETAIL

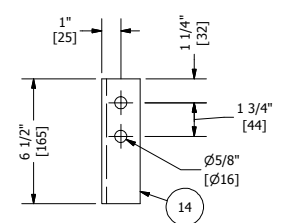
VIEW B-B



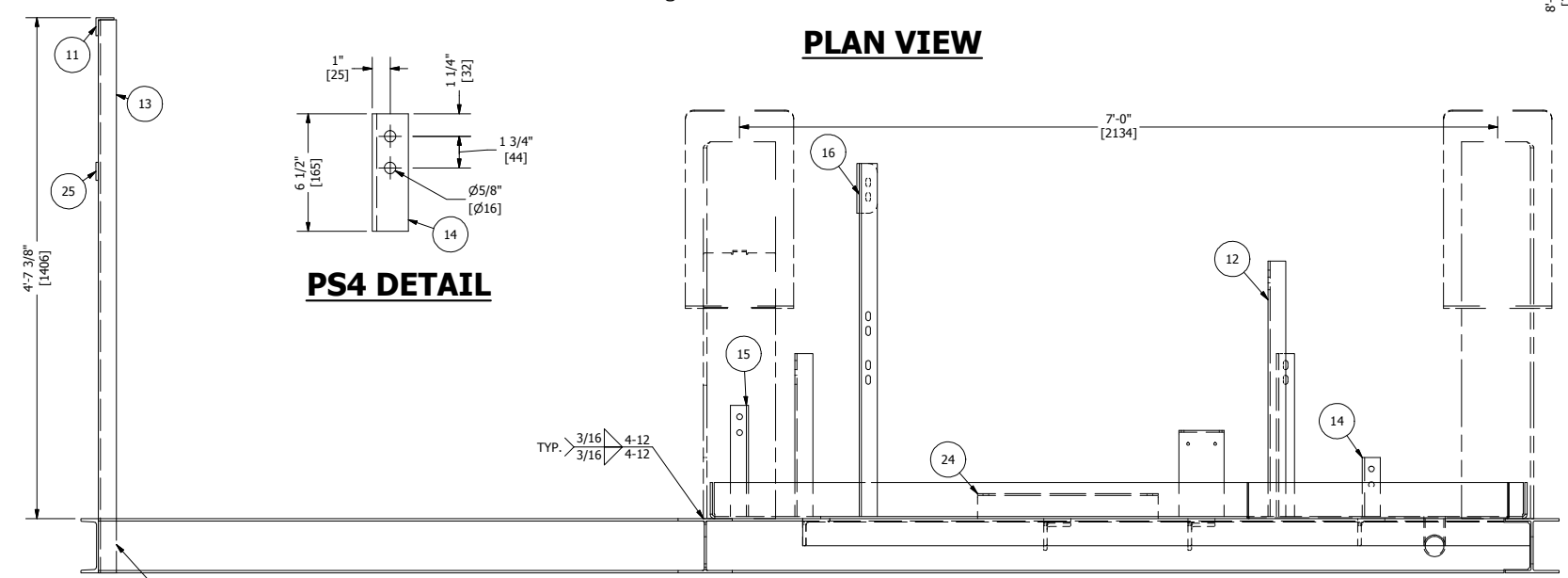
PLAN VIEW



PS4 DETAIL



ELEVATION VIEW



ENSURE STAND IS FULL WELDED AND NOT JUST TACKED IN PLACE

REV	DATE	DESCRIPTION	BY	ENG	PM	APP
A	2019/10/15	ISSUED FOR APPROVAL	RMM	JAM	DG	
0	11/4/2019	ISSUED FOR FABRICATION	AMC	JAM	DG	



BOX 6106
5815 37 Street
INNISFAIL, AB
CANADA
403-227-7799
1-888-227-4923
FAX 227-7796

CHEVRON CANADA LTD.

72" ID x 10' S/S 60 BBL FKOD - TAG: FKOD-4400 SKID ASSEMBLY		
QUOTE NUMBER: 107948	SALE ORDER: 005675	SIZE
PURCHASE ORDER: 11862693	JOB ORDER:	D
LOCATION: 16-21-059-19 WSM (SOFC-W115)	D5249	
DATE: 10/9/2019	DRAWING NO.:	REV.
SHEET: 5 OF 8	D5249-501	0
CRN DWG: N/A		
CRN NUMBER: N/A		