

## C-304 AUX WATER COOLER SECTION

DP= 14 PSIG @ 300°F

## C-305 EJW COOLER SECTION

DP= 14 PSIG @ 300°F

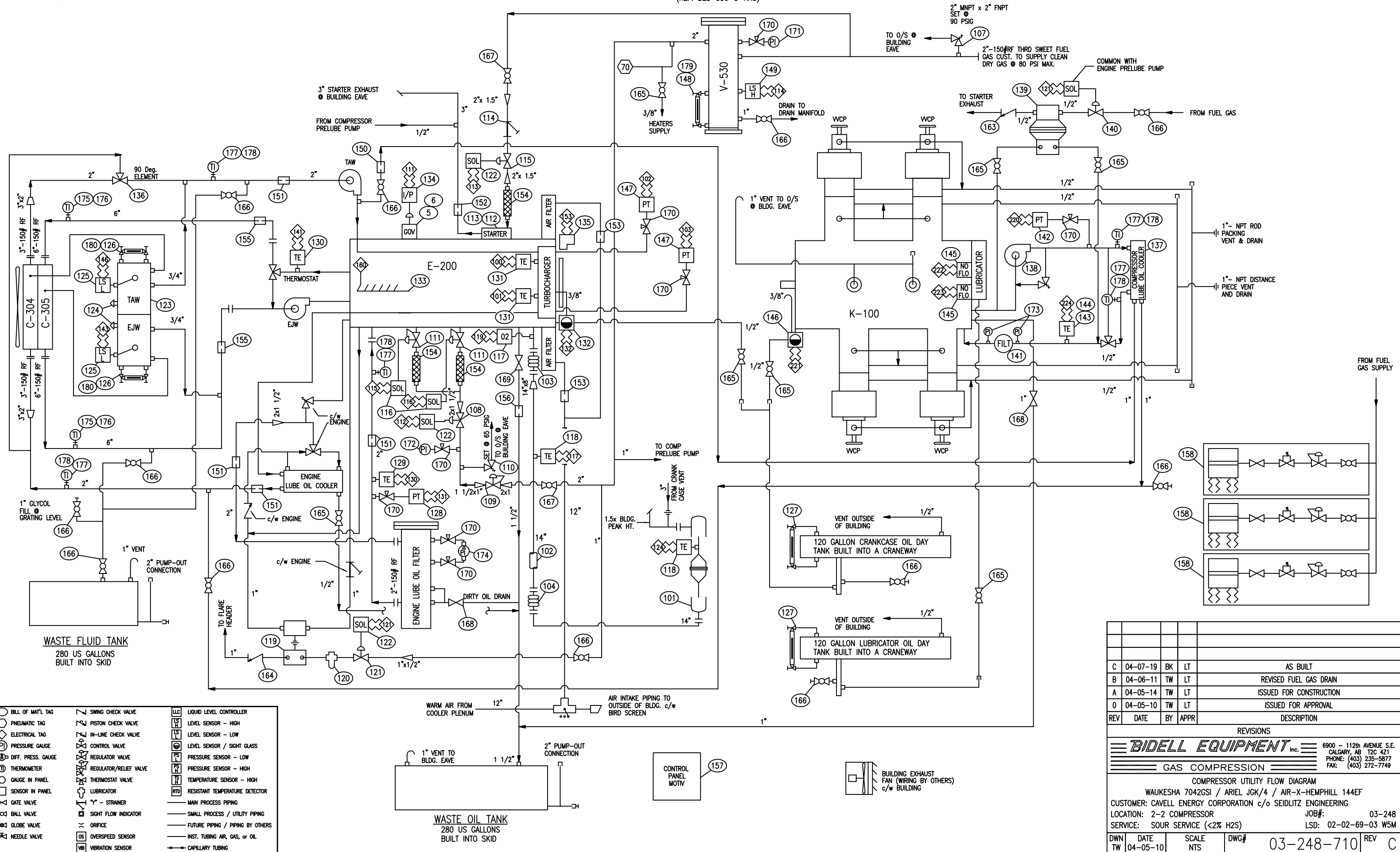
## E-200 TURBOCHARGED ENGINE

WAUKESHA 7042GSI  
1478 HP @ 1200 RPM  
"CEC" WAUKESHA 24V DC IGNITION

## V-530 FUEL GAS SEPARATOR

8 5/8" OD x 5'-3" S/S  
DP = 230 PSIG @ 300°F  
S/N: 03-248-530  
(REF: BES-530-8-RHS)

## K-100 COMPRESSOR

ARIEL JGK/4  
LONG SINGLE COMPARTMENT DISTANCE PIECETHIS DRAWING IS SOLE PROPERTY OF BIDELE EQUIPMENT INC.  
AND SHALL NOT BE REPRODUCED, COPIED, LENT, ALTERED  
NOR USED FOR ANY PURPOSE OTHER THAN WHICH IT IS FURNISHED  
EXCEPT WITH THE WRITTEN PERMISSION OF BIDELE EQUIPMENT INC.

REV	DATE	BY	APPR	DESCRIPTION
C	04-07-19	BK	LT	AS BUILT
B	04-06-11	TW	LT	REVISED FUEL GAS DRAIN
A	04-05-14	TW	LT	ISSUED FOR CONSTRUCTION
O	04-05-10	TW	LT	ISSUED FOR APPROVAL
REVISIONS				
<b>BIDELE EQUIPMENT Inc.</b>				
GAS COMPRESSION				
COMPRESSION UTILITY FLOW DIAGRAM				
WAUKESHA 7042GSI / ARIEL JGK/4 / AIR-X-HEMPHILL 144EF				
CUSTOMER: CAVELL ENERGY CORPORATION c/o SEIDLITZ ENGINEERING				
LOCATION: 2-2 COMPRESSOR				
SERVICE: SOUR SERVICE (<2% H2S)				
DWN	DATE	SCALE	DWG#	REV
TW	04-05-10	NTS	03-248-710	C