

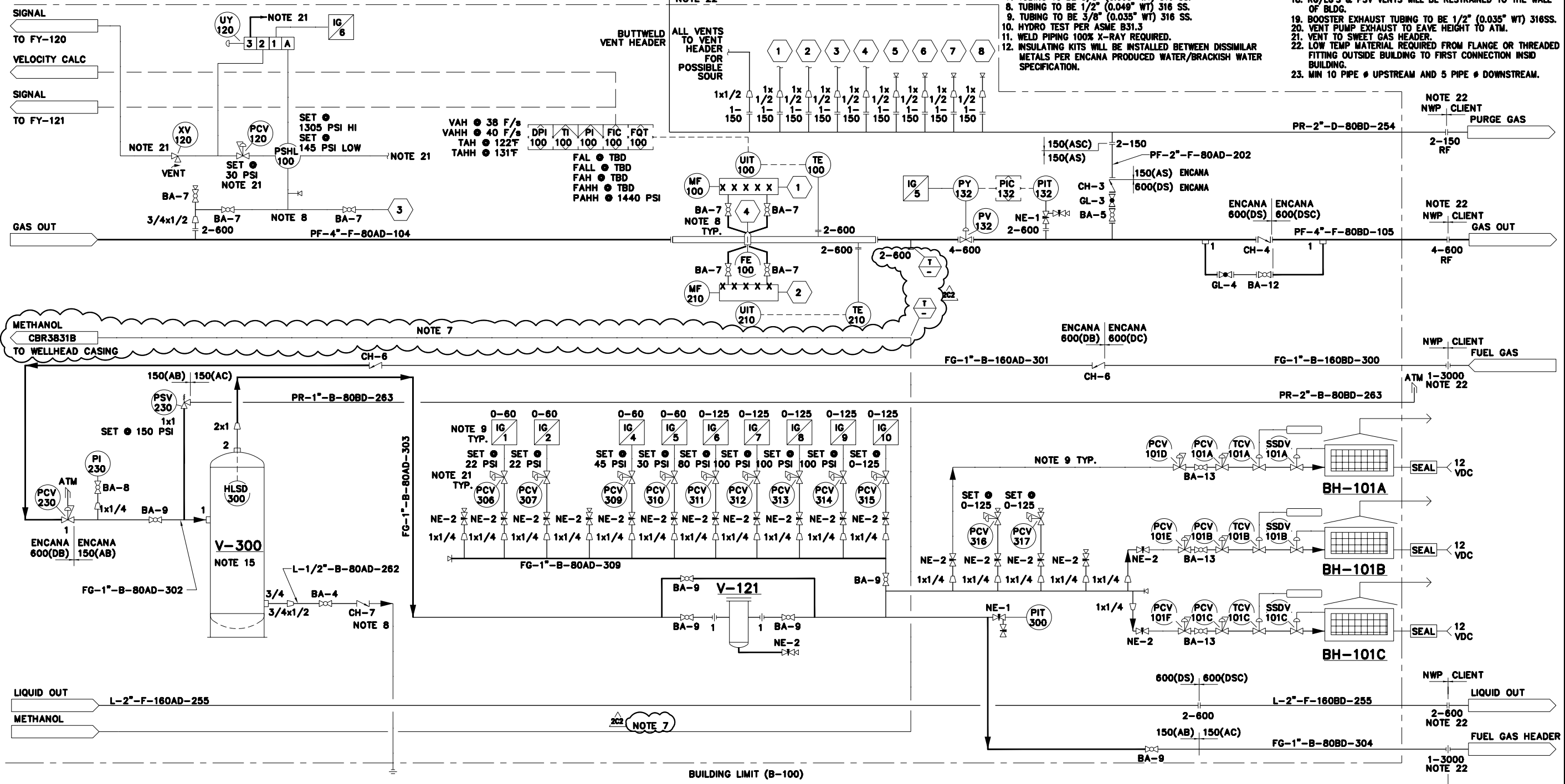
**V-300 FUEL GAS SCRUBBER**  
 MFR: NWP INDUSTRIES  
 SIZE: 8 5/8" OD x 36" S/S  
 MAWP: 285 PSI @ 100°F  
 MDMT: -50°F @ 285 PSI  
 C.A.: 1/8"  
 CRN NO.: OH09319.213

**V-121 FUEL GAS FILTER**  
 MFR: HEADLINE  
 MODEL NO.: 380A  
 1" NPT

**BH-101A/B/C BUILDING HEATER**  
 MFR: CATADYNE  
 SIZE: 24" x 24"  
 MODEL NO.: WX24x24  
 DUTY: 20,000 BTU

- NOTE:**
- PIPE SUPPORTS WHERE REQUIRED.
  - ALL PNEUMATIC INSTRUMENTS TO BE FUNCTIONED TESTED.
  - SHIP LOOSE ITEMS TO BE BOXED AND SEALED PRIOR TO SHIPMENT.
  - PLUG ALL OUTLETS PRIOR TO SHIPMENT.
  - ALL ELECTRICAL TO SCADAPACK 32 UNLESS OTHERWISE NOTED.
  - ALL INSTRUMENTS VENT TO COMMON HEADER EXCEPT ATO MUFFLERS ON CHEMICAL PUMPS.
  - TUBING TO BE 3/8" (0.065" WT) 316 SS.
  - TUBING TO BE 1/2" (0.049" WT) 316 SS.
  - TUBING TO BE 3/8" (0.035" WT) 316 SS.
  - HYDRO TEST PER ASME B31.3
  - WELD PIPING 100% X-RAY REQUIRED.
  - INSULATING KITS WILL BE INSTALLED BETWEEN DISSIMILAR METALS PER ENCANCA PRODUCED WATER/BRACKISH WATER SPECIFICATION.

- BALL VALVES SHALL USE AN ANTI STATIC DEVICE TO ENSURE ELECTRICITY BETWEEN THE BALL, STEM AND BODY.
- ALL BALL VALVES ARE TO BE COMPLIANT WITH API 598.
- V-300 DOES NOT REQUIRE X-RAY PER UW-11C, PWHT.
- INSTRUMENTATION WILL BE OPERATIONALLY TESTED TO ENSURE FUNCTION.
- STENCIL ON VESSELS TO BE ADDED "VESSELS POST WELD HEAT TREATED".
- RG/LG'S & PSV VENTS WILL BE RESTRAINED TO THE WALL OF BLDG.
- BOOSTER EXHAUST TUBING TO BE 1/2" (0.035" WT) 316SS.
- VENT PUMP EXHAUST TO EAVE HEIGHT TO ATM.
- VENT TO SWEET GAS HEADER.
- LOW TEMP MATERIAL REQUIRED FROM FLANGE OR THREADED FITTING OUTSIDE BUILDING TO FIRST CONNECTION INSID BUILDING.
- MIN 10 PIPE Ø UPSTREAM AND 5 PIPE Ø DOWNSTREAM.



THIS DRAWING REDRAWN FROM  
 NWP INDUSTRIES 08075-003-1-2

**CAUTION : READ BEFORE EXCAVATION**  
 ALL EXCAVATIONS MUST BE CARRIED OUT AS PER  
 "ENCANCA'S GROUND DISTURBANCE PRACTICE"

NO.	DATE	PROJECT DESCRIPTION	PROJ.	AFE	EPCM Co.	EPCM No.	APPD.
0	2011-07-12	ISSUED FOR CONSTRUCTION	.	.	NWP INDUSTRIES	.	DF
1	2011-08-05	NFDC #00000 REVISE P-130. REMOVE PCV-308	.	.	NWP INDUSTRIES	.	DF
2	2013-03-21	CASING DELECTION RE-01	.	.	COG7251	SOLARS	EN13-01084

ISSUE STAGE	DATE	BY	CHKD.	APPD.	PERMIT STAMP	ENGINEER'S STAMP
Prelin. (A)	.	.	.	.		
Rev. (B)	.	.	.	.		
Const. (C)	2013-03-21	BNW	VAT	DLM		
As-built (D)	.	.	.	.		

**encana**

COMP. STN. A-38-1  
 A-38-1/93-P-1  
 WELLSITE  
 B-35-G/93-P-1  
 NTS (A1 SIZE) EN13-01084

**SOLARIS MANAGEMENT CONSULTANTS INC.**  
 PIPING AND INSTRUMENTATION DIAGRAM  
 DUAL SEPARATOR PACKAGE - D-100 (NWP INDUSTRIES)

PERMIT STAMP AND PROFESSIONAL STAMP AFFIXED ABOVE SHALL APPLY ONLY TO REV(S) **2C2**

**CUTBACK RIDGE** CLASS FILE NO. **A** **CBR4211B**