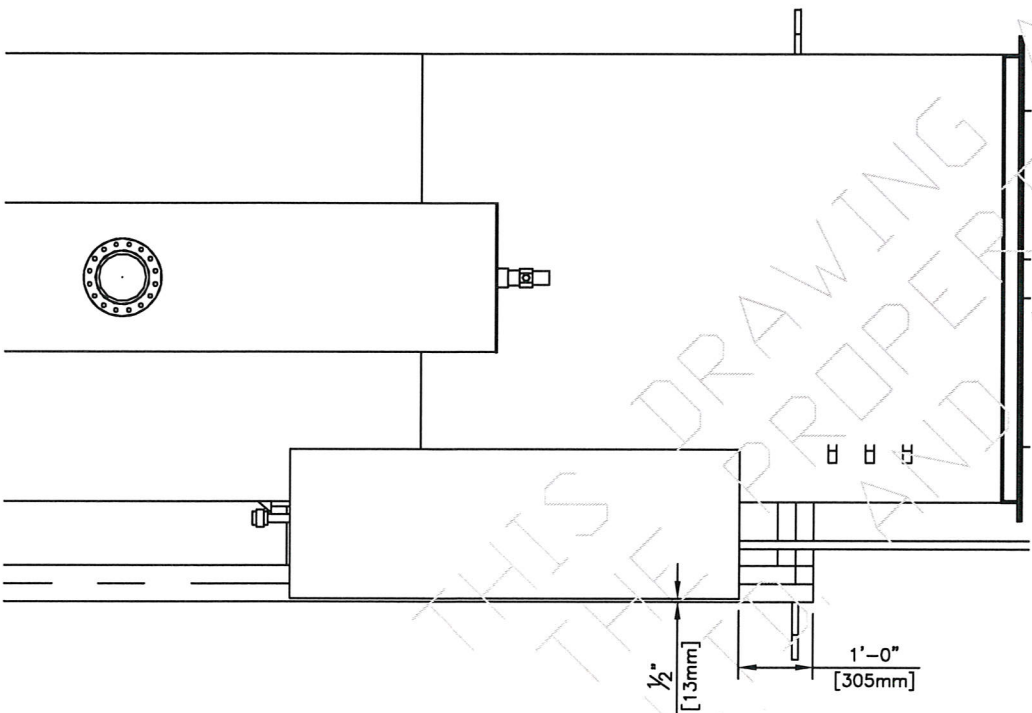
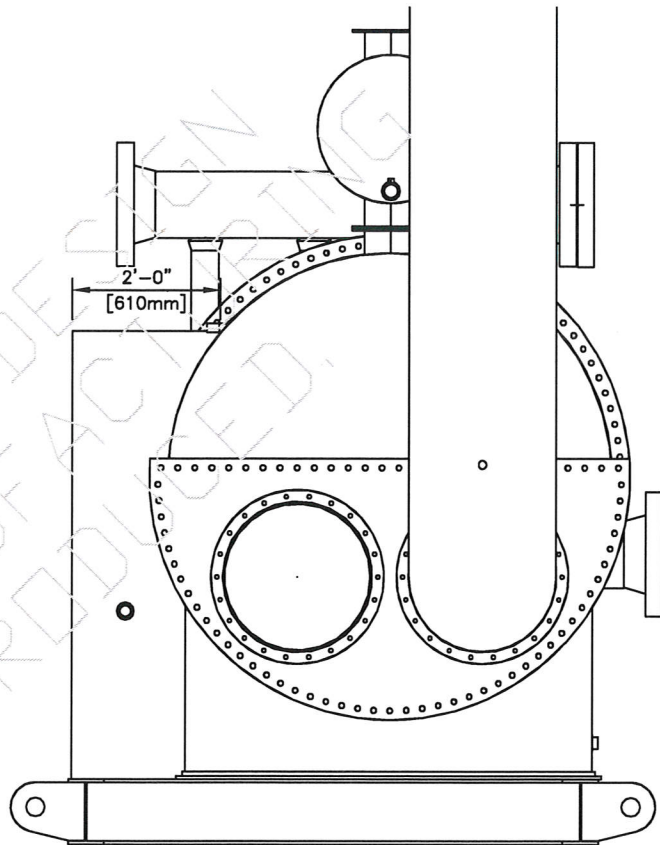


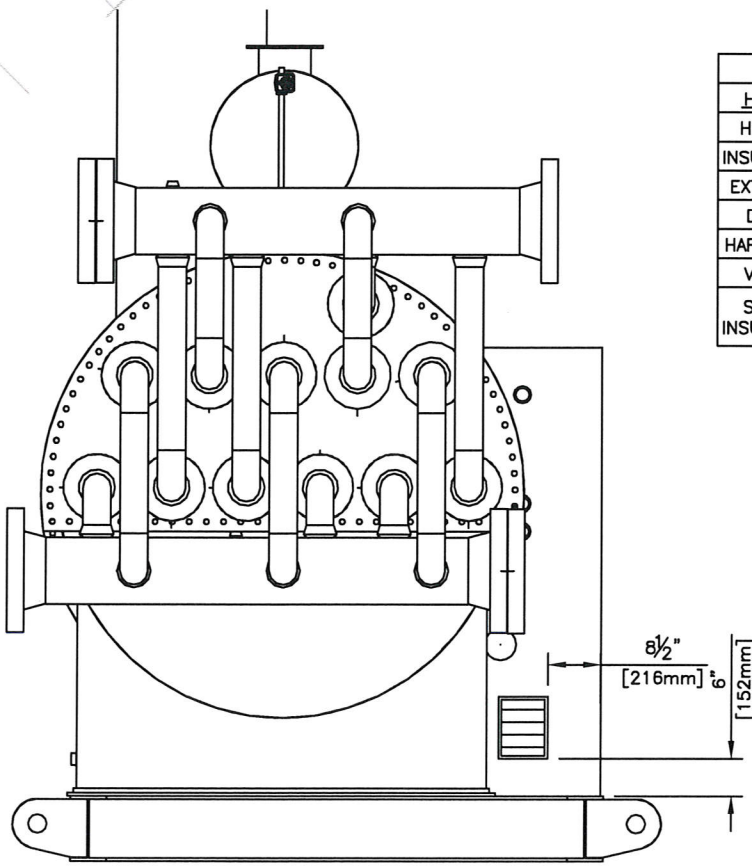
ELEVATION VIEW C
SCALE: 1:30



PLAN VIEW
SCALE: 1:30



ELEVATION VIEW B
SCALE: 1:30



ELEVATION VIEW D
SCALE: 1:30

AS BUILT

TAG	QTY	DESCRIPTION
HUTCH		2'-0" WIDE x 6'-0" LONG, FOAM PANEL
HEIGHT		6'-0"
INSULATION		R12 IN ROOF & WALLS
EXTERIOR		1 1/2" 24 GA GALVALUME FOAM PANEL
DOOR	1	5' x 5' FOAM PANEL DOUBLE
HARDWARE		CHECK CHAINS & SWEEPS, BARREL BOLT, CHAIN BOLT, & WEATHER STRIPPING
VENTS	1	9" x 7" ADJUSTABLE LOUVRES & SCREENS
SHELL INSULATION		1 1/2" INSULATION ON LINE HEATER SHELL NOT COVERED BY HUTCH c/w 0.02" STUCCO EMBOSSED ALUMINUM CLADDING

1	17-09-18	AS BUILT	KG	
0	17-06-05	ISSUED FOR CONSTRUCTION	KG	JB
NO.	DATE	REVISION	BY	APP
<div>CAPE MANUFACTURING LTD. PO BOX# 216 HALKIRK, AB T0C 1M0 TELEPHONE: (403) 884-2442</div>				
CLIENT: BIRCHILL CANADA LTD. PARTNERSHIP c/o: OEL PROJECTS LTD.				
LSD:	11-13-43-13 WSM	72" OD LINE HEATER		
DATE:	17-04-12	72" OD x 24'-0" F/F, 2.5MMBTU		
JOB NO.:	CML-170649	24 PASSES OF 4"-600CL RF		
SCALE:	SEE DWG.			
DRAWN BY:	KG			
CHECKED BY:	DH			
SHEET 1 OF 1		DWG NO.:	CML-170649BLDG	REV. 1