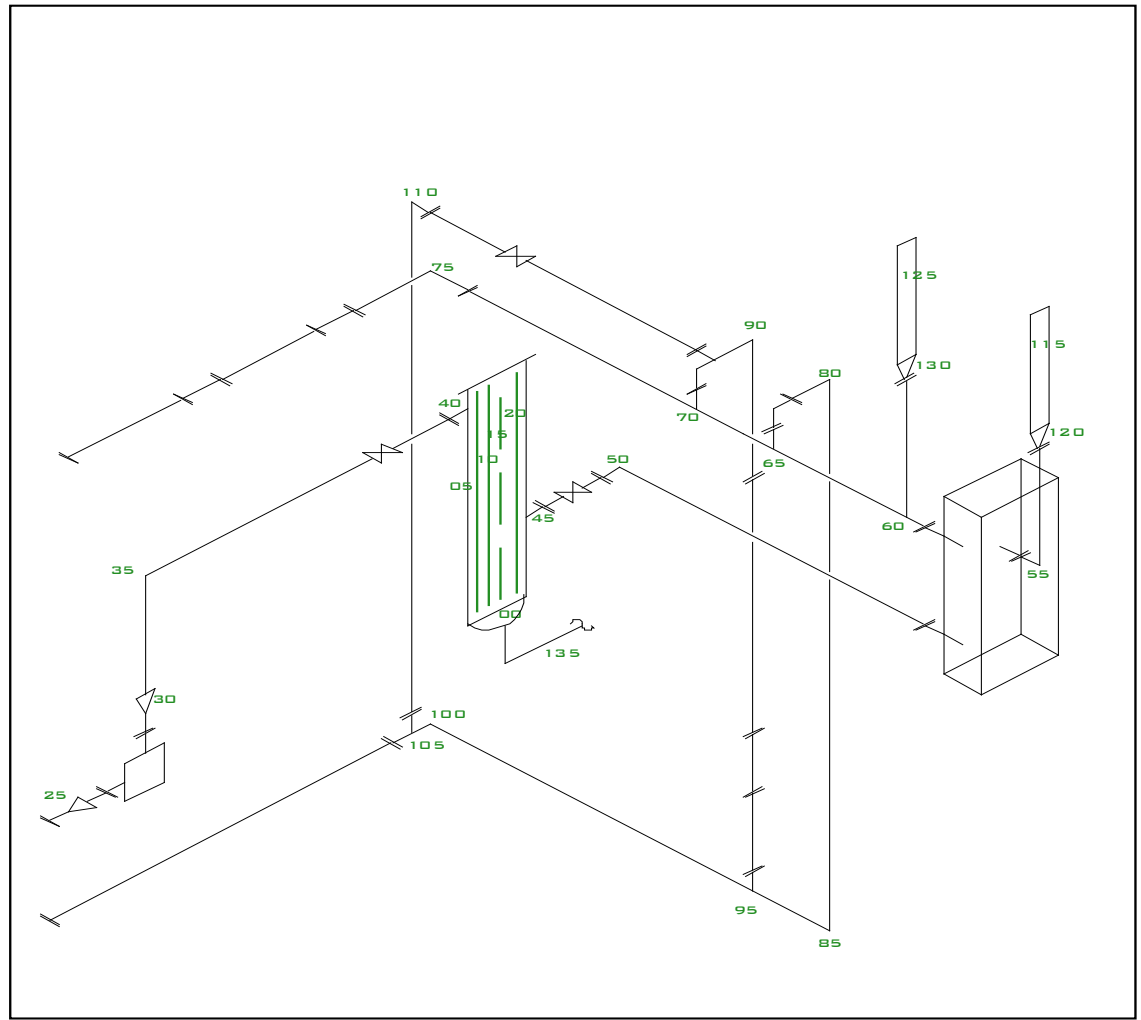

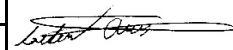


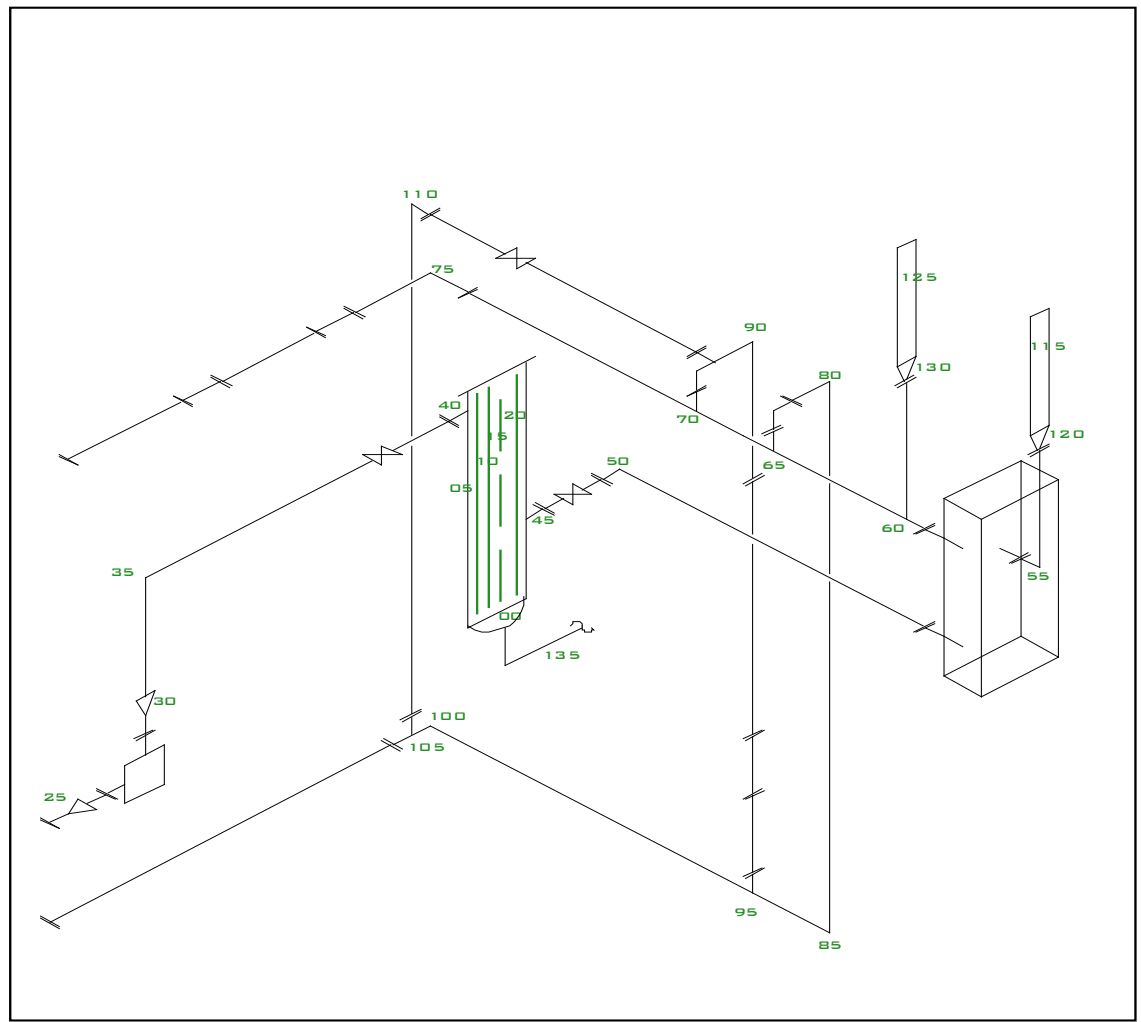
<i>Alpine NDT Services</i>		Unit# >	-	PO# >	-	Date >	<i>Nov. 19, 2024</i>
Client >	<i>FUELLED</i>	A# >	-	Report# >	<i>4899-B</i>	Year >	<i>2004</i>
Area >	<i>AJAY SINGH</i>	Ser. # >	<i>JL2004-026</i>	Insulated >	<i>No</i>	OD >	<i>8"</i>
Equipment >	<i>FILTER & PIPING</i>	CRN# >	<i>M1363.213Y</i>	MAWP >	<i>150 PSI</i>	PWHT >	<i>No</i>
Manufacturer >	<i>JL FILTRATION</i>	Service >	<i>OUT OF SERVICE</i>	Temp >	<i>500 F</i>	RT >	<i>RT-1</i>




UT Machine	Make:	GE Inspection	Model:	USM Go	Serial #:	11105089	Calibration Date:	Oct. 18, 2024					
Transducer	Make:	Stresstel	Frequency:	5 MHz	Serial #:	023PX8	Size:	.250"	Angle:	0°	Mode:	Longitudinal	
Cal Block	Type:	4 Step	Reflector:	BWE	Serial #:	11963"	Thickness:	6.25mm - 25mm	Technician	Caeden Aris			
Code	ASME V Article 23 SE797		Temp	Ambient			Qualifications		CGSB MT2 SNT UT2 MT2				
Acceptance	Client Specification		Material	Carbon Steel			CGSB#	24369					
Procedure	UT-1 Thickness Testing Rev.1		Surface Prep	Painted			Report #	-					

Alpine NDT Services						Unit# >	-		PO# >	-		Date >	Nov. 19, 2024			
Client > FUELLED						A# >	-		Report# >	4899-B		Year >	2004			
Contact > AJAY SINGH						Ser. # >	JL2004-026		Insulated	No		OD >	8"			
Equipment > FILTER & PIPING						CRN# >	M1363.213Y		MAWP >	150 PSI		PWHT >	No			
Manufacturer > JL FILTRATION						Service >	OUT OF SERVICE		Temp >	500 F		RT >	RT-1			
No.	Orientation	Location	Material	Size	Sch.	Nom.	Min.	CA	A/V	Previous	Previous	Previous	Previous	Min.	Avg.	
100	Horizontal	Elbow	-	2"	XS	.218"	.191"	-	Assumed	-	-	-	-	.198"	.210"	
Comments:																
105	Horizontal	Tee	-	2"	XS	.218"	.191"	-	Assumed	-	-	-	-	.206"	.280"	
Comments:																
110	Vertical	Elbow	-	2"	XS	.218"	.191"	-	Assumed	-	-	-	-	.207"	.220"	
Comments:																
115	Vertical	Pipe	-	4"	STD	.237"	.208"	-	Assumed	-	-	-	-	.248"	.265"	
Comments:																
120	Circ	Reducer	-	4" x 3"	STD	.237"	.208"	-	Assumed	-	-	-	-	.302"	.370"	
Comments:																
125	Vertical	Pipe	-	4"	STD	.237"	.208"	-	Assumed	-	-	-	-	.252"	.265"	
Comments:																
130	Circ	Reducer	-	4" x 3"	STD	.237"	.208"	-	Assumed	-	-	-	-	.258"	.320"	
Comments:																
135	Circ	Pipe (Threaded)	-	1"	XS	.179"	.154"	-	Assumed	-	-	-	-	.175"	.185"	
Comments:																
140																
Comments:																
145																
Comments:																
150																
Comments:																
155																
Comments:																
160																
Comments:																
165																
Comments:																
170																
Comments:																
175																
Comments:																
180																
Comments:																
185																
Comments:																
190																
Comments:																
195																
Comments:																

Alpine NDT Services		Unit# >	-	PO# >	-	Date >	Nov. 19, 2024
Client >	FUELLED	A# >	-	Report# >	4899-B	Year >	2004
Area >	AJAY SINGH	Ser. # >	JL2004-026	Insulated >	No	OD >	8"
Equipment >	FILTER & PIPING	CRN# >	M1363.213Y	MAWP >	150 PSI	PWHT >	No
Manufacturer >	JL FILTRATION	Service >	OUT OF SERVICE	Temp >	500 F	RT >	RT-1



UT Machine	Make: GE Inspection	Model: USM Go	Serial #: 11105089	Calibration Date: Oct. 18, 2024			
Transducer	Make: Stresstel	Frequency: 5 MHz	Serial #: 023PX8	Size: .250"	Angle: 0°	Mode: Longitudinal	
Cal Block	Type: 4 Step	Reflector: BWE	Serial #: 11963"	Thickness: 6.25mm - 25mm		Technician	Caeden Aris
Code	ASME V Article 23 SE797	Temp	Ambient		Qualifications	CGSB MT2 SNT UT2 MT2	
Acceptance	Client Specification	Material	Carbon Steel		CGSB#	24369	
Procedure	UT-1 Thickness Testing Rev.1	Surface Prep	Painted		Report #	-	