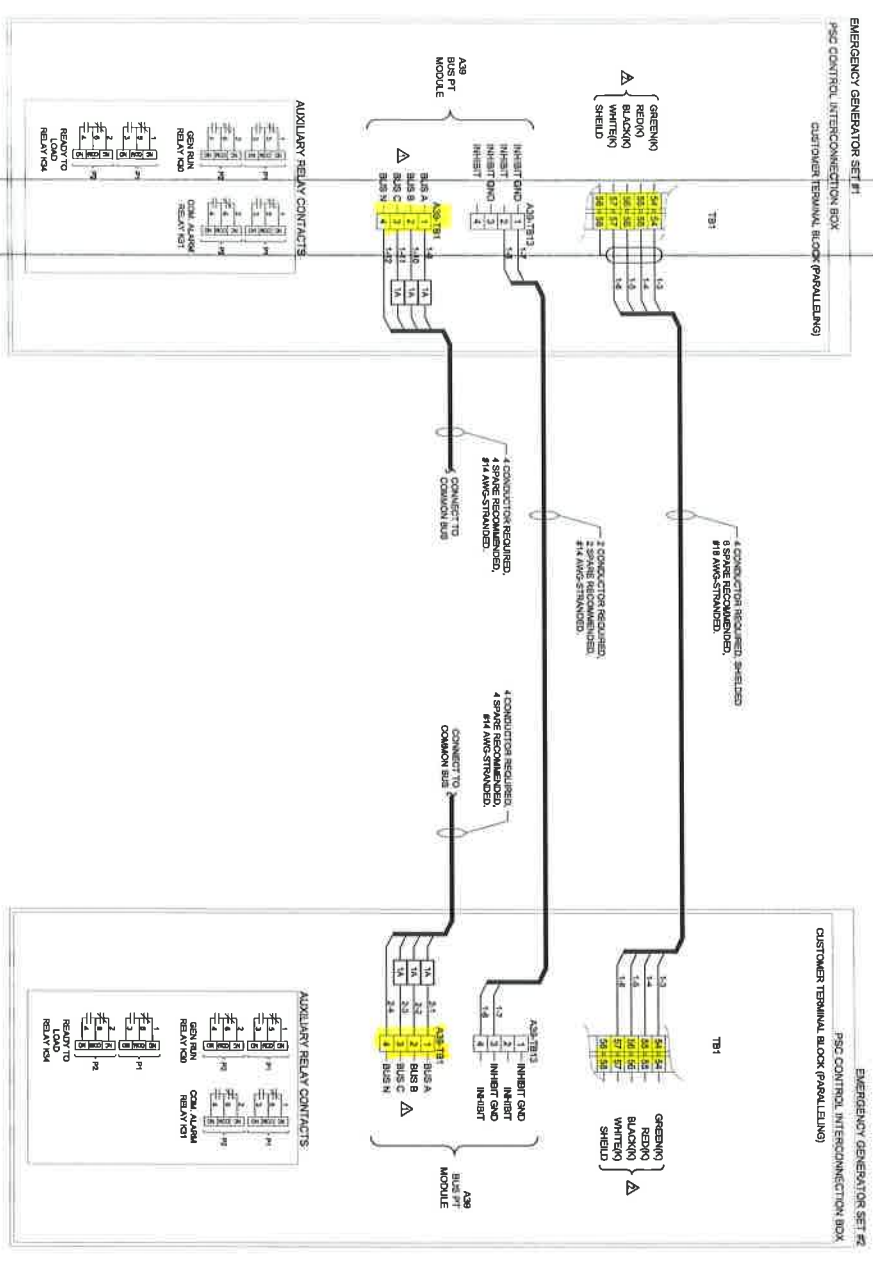


REFERENCE DRAWING	REV
REF. DRAWING #	-

PSC CONTROL MULTIPLE UNIT OPERATION



- NOTES:
- △ REFER TO OILMAN 605-2886 POWER COMMAND NETWORK AND OPERATION MANUAL FOR INTERCONNECTION INSTRUCTIONS (OPTIONAL PSC NETWORK INTERFACE MODULES)
 - △ WARNING: LINE VOLTAGE MAY BE PRESENT AT /AS TERMINALS
 - △ PARALLEL LOAD SHAVE LINE (0 - 714A) USE 4 CONDUCTOR SHIELDED CABLE 18 GA STRANDED MAXIMUM RUN 500 FT.

* TERMINAL BLOCK RATING:
22 TO 12 GA WIRE
TORQUE TERMINAL SCREENS TO 7 IN-LBS (0.8 NM)

REV	DATE	BY	CH	DESCRIPTION
1	FEB 27, 2013	BR	-	ADDED FUSES TO BUS LINES FOR APPROVAL
2	FEB 26, 2013	BR	-	REMOVED NETWORK WIRING AND NOTE

REV	DATE	BY	CH	DESCRIPTION
1	FEB 22, 2013	BR	-	ADDED FUSES TO BUS LINES FOR APPROVAL

IMPORTANT

THIS DOCUMENT IS THE PROPERTY OF CUMMINS WESTERN POWER GROUP. IT CONTAINS PROPRIETARY AND CONFIDENTIAL INFORMATION WHICH MUST NOT BE DUPLICATED, USED OR DISCLOSED WITHOUT THE EXPRESS WRITTEN AUTHORIZATION OF CUMMINS WESTERN CANADA OR ITS REPRESENTATIVE.

Author: P. TREBINSKI
 Designer: B. RANSETH
 Checked: N/A



FIELD CONNECTIONS

33462-11

1 OF 1
CA