

CONFIDENTIAL

Design Code Field Approval Appliance Approved

for

Dynamic Combustion

Owner / Operator: Birchill Canada Limited Partnership

Plant: Birchill HZ Brazr

Area:

Map Location: 01-04-043-13-W5

Tag Number:

Appliance Type: Line Heater

Appliance Serial No: NWP-08562-001-A



Report / Print Date: 08 Jan 2021

ENEFEN Project: NFN1805015

Attention

This Appliance is approved and may be operated.
This package contains a rating/approval plate that must be attached to the appliance and may be subject to an inspection by the Authority Having Jurisdiction.



ENEFEN Energy Efficiency Engineering Ltd.

82 52A ST • Delta, BC, V4M 2Z5 • +1-780-665-2863
www.ENEFEN.com

TABLE OF CONTENTS

REPORT SECTIONS IN THIS REPORT

Report Section

Report Cover
Table of Contents
Validation and Methodology
Certificate of Conformance
Project Information
Project Summary
Appliance Data
Inspection Photos
Proof Of Correction Photos
Rating Plate Information
Fuel Composition
Setpoints
Piping and Instrumentation Diagram
System Wiring Diagram

NFN Number	NFN1805015	Product Type	Design Code Field Approval		
Design Code	302C-A5-NW002	Project Status	Appliance Approved		
Field Evidence By	Travis Todd	Owner	Birchill Canada Limited Partnership	LOC	01-04-043-13-W5
Field Evidence	12 Jun 2018	Plant	Birchill HZ Brazr	Tag	
Report by	Christopher Pascua	Area		Serial	NWP-08562-001-A
P.Eng. Review by	Jozef Jachniak, P. Eng.	Contact	Garrett Umbach	Phone	250-263-4606

SCOPE

ENEFEN performs field inspection evaluations based on Canadian code requirements for the safety and suitability of one-of a-kind and limited run commercial and industrial gas-fired appliances and equipment that may be designed for installation at a specific site or assembled on-site. Field approvals include the application of an approval label on the appliance, an approval certificate, and a report in accordance with jurisdictional codes and requirements.

This evaluation has been completed under the Alberta Municipal Affairs Gas Code Regulation Variance VAR-GAS-03-19, which allows for a professional engineer registered with APEGA to provide an appliance approval as an alternative to the Certification Body or Inspection Body requirements under Section 3 of the Gas Code Regulation for gas-fired equipment used in process and utility applications at oil and gas production facilities. The Safety Codes Act supports an objective or performance based approach to compliance through the application of a variance under section 38. Evaluations comply with the Safety Codes Act and adopted regulations or include a risk based assessment related to the objectives of the Safety Codes Act to provide equivalent or greater safety with respect to persons, property and integrity of equipment. All components evaluated by a professional engineer include an assessment for conformance with industry-recognized published standards adopted in Canada, or in the absence of such standards with process and performance requirements, third-party test reports, and based on a history of demonstrated successful performance.

Inspection of an installed appliance includes the safety aspects of all combustion related equipment: fuel supply components; fuel train piping/components; fuel system design; fuel system and burner controls; process controls and permissives dependent on the combustion equipment. Issues found not conforming with the compulsory sections of the applicable codes given below are identified as Non-Conformances. If an issue is found that does not conform with a non-compulsory section, other codes and standards, or good engineering/industry practice, it is identified as an Observation. Such issue, although excluded from the scope of our approval, may create a potential safety hazard or affect the operation/performance of the appliance, and should be corrected.

Consulting the AHJ may be necessary to meet other jurisdictional requirements that are not in the scope of the gas-fired appliance field approval. Inspection does not include other design aspects, such as detailed compliance with the project or owner specifications, and the suitability of the equipment for any specific purpose, process conditions, or performance requirements.

APPLICABLE CODES

ENEFEN evaluates according to relevant clauses of the following codes:

CSA B149.1-15 - Natural gas and propane installation code

CSA B149.3-15 - Code for the field approval of fuel-related components on appliances and equipment

CSA STD C22.1-15 - Canadian Electrical Code, Part I Safety Standard for Electrical Installations

EVALUATION METHODS

- Identify applicable standards
- Travel to evaluation site
- Obtain work permit
- Establish communication with office
- Perform safety check
- Perform initial walkdown
- Take overall photos of the evaluated product
- Take inventory of components
- Take photos of components
- Check mechanical assembly methods
- Check wiring methods
- Check setpoints
- Check permissives
- Confirm non-conformances
- Confirm observations
- Confirm advise items
- Finalize documentation / photos

Return equipment to "as-found" and "safe" state
Clean up evaluation site
Report any unsafe condition to responsible party
Report imminent danger condition to AHJ
Close work permit and advise responsible party of departure
Send initial evaluation report to client
Incorporate proof of corrections
Send final evaluation report to client

TOOLS

ASSET 00005 | Digital Camera | Olympus SP-620UZ | Serial Number Worn off | No calibration required
ASSET 00032 | Cell Phone | Apple iPhone MKQT2VC/A | Serial Number DNPRJ15VGRYG | No calibration required
ASSET 00036 | Bluetooth Headset | Jabra Stealth | Serial Number N/A | No calibration required
ASSET 00039 | Navigation System | Garmin Nuvi 265W | Serial Number 21D507110 | No calibration required
ASSET 00049 | Hand held engraver | Dremmel 8220 | Serial Number N/A | No calibration required
ASSET 00424 | Temporary Inspection Plates - Red, yellow, green, grey | Various | Serial Number N/A | No calibration required
ASSET 00489 | Tape measure short | Various | Serial Number N/A | No calibration required

OUR COMMITMENT TO QUALITY

We are committed to and passionate about the SAFETY, COMPLIANCE, HIGH EFFICIENCY and LOW ENVIRONMENTAL IMPACT of industrial and commercial energy systems. Our mission is to provide complete and high quality FIELD INSPECTIONS, ASSESSMENTS, and DESIGNS to bring you peace of mind combined with environmental and financial gains. Accredited by the Standards Council of Canada, and with staff engineers registered in a number of the Canadian provinces and territories, ENEFEN provides qualified and dependable services to a wide range of private industries.

Quality is imperative when working with fired appliances. ENEFEN has a quality management system which explains how we operate and what is expected of staff. It demonstrates to clients the level of quality and professionalism they can expect when they work with ENEFEN.

ENEFEN uses a unique project process and proprietary project tracking software to monitor project status and to store client reports. Flowcharts are available to clients to illustrate all steps that a project must follow, where client input is needed, and expected project deliverables. It is ENEFEN's goal with this process to take a systematic approach to all projects, avoid mistakes, maintain a high level of quality, and to exceed your expectations.

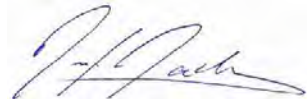
ENEFEN's inspection services are structured to ensure impartiality and to avoid any potential for external influences. Key staff undergo continuous surveillance to ensure their competency in meeting job requirements, however we have a formal resolution process to address any concerns or complaints you might have if we do not meet expectations.

We value your business. If you have any questions about our services or how we operate please contact us.

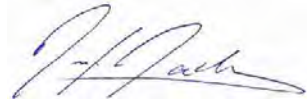
RESPONSIBLE PERSONNEL

These ENEFEN personnel are responsible for the results of our evaluation, and the reliability and accuracy of this report.

Report review and quality control is by: Jozef Jachniak, P. Eng. Signed on: 08 Jan 2021



Technical supervision of this inspection is by a registered Professional Engineer: Jozef Jachniak, P.Eng. Signed on: 08 Jan 2021



CERTIFICATE OF CONFORMANCE



ENEFEN Energy Efficiency Engineering Ltd.

780-665-2863

www.ENEFE.com

FIELD APPROVAL NUMBER: NFN1805015 Rev 20210108_1726

REPORT DATE: 08 JAN 2021

PRODUCT: Design Code Field Approval

Prepared By Christopher Pascua

Reviewed By Jozef Jachniak, P. Eng.

Client/Consultant Dynamic Combustion

Contact Garrett Umbach

Email gumbach@dynamiccombustion.ca,
kschatz@birchill.com

Tel 250-263-4606

Cell 250-263-7195

Owner/Operator Birchill Canada Limited
Partnership

Plant Birchill HZ Brazr

Area

Elevation 3750 ft | 1143 m

Jurisdiction Alberta Municipal Affairs

Program VAR-GAS-03-19

Process Gas Well

Function Indirect Fired Gas Heating

Appliance Line Heater

Appliance Tag

Map Location 01-04-043-13-W5

Serial Number NWP-08562-001-A

Appliance Approved

Project Category: Gas Appliance Field Approval

Validity: Under the authority given to Professional Engineers by Alberta Municipal Affairs as per the requirements of the Gas Code Regulation Variance VAR-GAS-03-19.

Conditions of Approval:

- The rating plate must be attached to the appliance
- Subject to local regulatory restrictions and applicable permits(eg. gas and electrical)
- The Appliance Maximum Fuel Input (HHV) on the rating plate must not be exceeded
- Alteration or relocation will void the approval (unless approved as movable appliance)
- The Authority Having Jurisdiction (AHJ) may choose to examine the appliance, rating plate or report.

I hereby attest that this installed appliance meets all of the jurisdictional requirements and is approved as inspected according to this project report.



APPROVED BY:
Jozef Jachniak, P. Eng.

APPROVED DATE:
08 Jan 2021

PERMIT TO PRACTICE:
P08977



PROJECT INFORMATION

20210108_1726

ENEFEN Number NFN1805015
Product Design Code Field Approval
Design code 302C-A5-NW002
Project description
Jurisdiction Alberta Municipal Affairs
Program VAR-GAS-03-19

Appliance Identification

Process Gas Well
Function Indirect Fired Gas Heating
Type Line Heater
Tag Number
Name
Map Location 01-04-043-13-W5
Plant Birchill HZ Brazr
Area
Serial Number NWP-08562-001-A
Site elevation 3750 ft | 1143 m
CRN number
Alberta number

Appliance Information

Manufacturer NWP Industries Inc.
Project number
Built where
Date built 2012
Model number
Installed by Dynamic Combustion
Project number 2018-033
New or upgrade Upgrade
Date

Client Information

Company name Dynamic Combustion
Project number 2018-033
Branch/plant Fort St. John Office
Department/area
Contact name Garrett Umbach
Contact email gumbach@dynamiccombustion.ca,kschatz@birchill.co
Contact phone 250-263-4606 **Extension**
Contact cell 250-263-7195 **Fax**

Owner/Operator Information

Company name Birchill Canada Limited Partnership
Project number
Branch/plant Birchill HZ Brazr
Department/area
Contact name Kevin Schatz
Contact email kschatz@birchill.com
Contact phone 403-815-3801 **Extension**
Contact cell **Fax**

Consultant Information

Company name N/A
Project number
Branch/plant
Department/area
Contact name
Contact email
Contact phone **Extension**
Contact cell **Fax**

PROJECT SUMMARY

20210108_1726

Page 1 of 1

NFN Number	NFN1805015	Product Type	Design Code Field Approval		
Design Code	302C-A5-NW002	Project Status	Appliance Approved		
Field Evidence By	Travis Todd	Owner	Birchill Canada Limited Partnership	LOC	01-04-043-13-W5
Field Evidence	12 Jun 2018	Plant	Birchill HZ Brazr	Tag	
Report by	Christopher Pascua	Area		Serial	NWP-08562-001-A
P.Eng. Review by	Jozef Jachniak, P. Eng.	Contact	Garrett Umbach	Phone	250-263-4606

CODE COMPLIANCE SUMMARY

Fuel train layout compliant?	Yes
Fuel train sizing compliant?	Yes
Fuel train installation compliant?	Yes
Burner design compliant?	Yes
Burner installation compliant?	Yes
BMS FSG design compliant?	Yes
BMS FSG installation compliant?	Yes
Permissives design compliant?	Yes
Permissives installation compliant?	Yes
Controls design compliant?	Yes
Controls installation compliant?	Yes
Appliance design compliant?	Yes
Appliance installation compliant?	Yes
Flammable gas venting compliant?	Yes
Stack installation compliant?	Yes
All components certified or approved?	Yes
All technical documentation complete?	Yes
System Compliant with CSA B149.3?	Yes

OBSERVATION

Response is not mandatory but may be provided to record in the report

Fuel Gas PSHH Setpoint

120.7 kPag | 17.5 psig | Accepted based on appliance application and high excess air in stack, there is no safety concern with the pressure high-high setpoint.

Observation

APPLIANCE DATA						20210108_1726
NFN Number	NFN1805015	Product Type	Design Code Field Approval			
Design Code	302C-A5-NW002	Project Status	Appliance Approved			
Field Evidence By	Travis Todd	Owner	Birchill Canada Limited Partnership	LOC	01-04-043-13-W5	
Field Evidence	12 Jun 2018	Plant	Birchill HZ Brazr	Tag		
Prepared By	Christopher Pascua	Area		Serial	NWP-08562-001-A	
Reviewed By	Jozef Jachniak, P. Eng.	Contact	Garrett Umbach	Phone	250-263-4606	
128 LOCATION INFORMATION						
Burner Location	Outdoor				Noted	
Fuel Train Location	Inside Enclosure				Noted	
Control Panel Location	Outdoor				Noted	
Building or Enclosure Features	Building/Enclosure heated by uninsulated vessel.				Noted	
Appliance Ambient Temperature Rating	-29°C to 40°C -20°F to 104°F				Noted	
161 PROCESS INFORMATION						
Process	Gas Well				Noted	
Process Cycle percent	100 %				Noted	
Annual Operation Percent	100 %				Noted	
Appliance Function	Indirect Fired Gas Heating				Noted	
Appliance Type	Line Heater				Noted	
Process Fluid	Natural Gas				Noted	
Bath Fluid	Glycol				Noted	
162 APPLIANCE INFORMATION						
Process Duty	1.94 GJ/h 1.84 MM Btuh				Noted	
Appliance Efficiency HHV	77.1 %				Noted	
Fuel Total Input (HHV)	2.52 GJ/h 2.39 MM Btuh				Noted	
Flame Safeguard System Logic Type	Single Burner FSG				Noted	
Number of Burners	2				Noted	
Burner Fuel Input (HHV)	1.261 GJ/h 1.195 MM Btuh				Noted	
Main Burner Max. Design Pressure	83 kPag 12.0 psig				Noted	
Main Burner Min. Design Pressure	6.9 kPag 1.0 psig				Noted	
Burner Turndown	3.46 : 1				Noted	
Pilot Configuration	Separate premix pilot				Noted	
Pilot Type	Intermittent / Continuous				Noted	
Pilot Fuel Input (HHV)	0.03 GJ/h 0.03 MM Btuh				Noted	
Pilot Pressure	48 kPag 7.0 psig				Noted	
Ignition Type	Electric ignition from BMS				Noted	
Instrument Control Method	Electric / Pneumatic				Noted	
Is it a Pressure Vessel	No. Process Coils are pressurized but heater shell is not.				Noted	
CRN Number	Process Coils ~ P9417.213				Noted	
Alberta A Number	Process Coils ~ 605748				Noted	

APPLIANCE DATA

Page 2 of 9

163 PRIMARY FUEL SUPPLY

Primary Fuel Type	Produced Gas	Noted
Is Primary Fuel Sweet	Sweet < 5ppm H2S	Noted
Is Primary Fuel Dry	Wet	Noted
Primary Fuel Source	Gas well	Noted
Primary Fuel Composition Known	Unknown. Estimated to have similar heating value to standard sales gas composition.	Noted
Primary Fuel Inlet Pressure	689 kPag 100.0 psig	Noted
Primary Fuel Odorization	Not Odorized	Noted
Primary Fuel Scrubber	Mechanical Scrubber	Noted
Primary Fuel Filter	Y-Strainer installed upstream of the main fuel train PRV.	Noted
Primary Fuel Overpressure Protection	Upstream PSV protects the main PRV.	Noted
Primary Fuel Overpressure Protection Device (OPPD)	Mercer safety relief valve	Noted
Primary Fuel OPPD Setpoint	1034 kPag 150.0 psig	Noted
Primary Fuel Preheat	Preheat through bath fluid	Noted
Line Pressure Control Device	Fisher 627 ~ 3/16in. orifice ~ 70-150psi spring ~ 1000psi max inlet ~ -50°C	Noted
Line Pressure Control Device Setpoint	689 kPag 100.0 psig	Noted

164 SECONDARY FUEL SUPPLY

Secondary Fuel Type	Not approved for secondary fuel use	Noted
---------------------	-------------------------------------	-------

165 PILOT FUEL SUPPLY

Pilot Fuel Type	Produced Gas	Noted
Is Pilot Fuel Sweet	Sweet < 5ppm H2S	Noted
Is Pilot Fuel Dry	Wet	Noted
Pilot Fuel Source	Same as main fuel train	Noted
Pilot Fuel Composition Known	Unknown. Estimated to have similar heating value to standard sales gas composition.	Noted
Pilot Fuel Inlet Pressure	689 kPag 100.0 psig	Noted
Pilot Fuel Odorization	Not Odorized	Noted
Pilot Fuel Scrubber	Same as main fuel train	Noted
Pilot Fuel Filter	Y-Strainer in the main fuel train upstream of the pilot take-off.	Noted
Pilot Fuel Overpressure Protection Device (OPPD)	Upstream PSV protects the pilot PRV.	Noted
Pilot Fuel OPPD Setpoint	1034 kPag 150.0 psig	Noted
Pilot Fuel Preheat	Preheat through bath fluid	Noted

APPLIANCE DATA

Page 3 of 9

170 INSTRUMENT GAS INFORMATION

Instrument Gas Type	Produced Gas	Noted
Is Instrument Gas Sweet	Sweet	Noted
Is Instrument Gas Dry	Wet	Noted
Instrument Gas Source	Upstream of main fuel train regulator.	Noted
Instrument Gas Inlet Pressure	689 kPag 100.0 psig	Noted
Instrument Gas Filter	Integral to instrument pressure regulator.	Noted
Instrument Gas Overpressure Protection Device (OPPD)	PSV integral to instrument gas PRV	Noted
Instrument Gas PRV for FCV	Fisher 67CFR ~ 0-35psi spring ~ 250psi max inlet ~ -29°C	Noted
Instrument Gas PRV for FCV Setpoint	152 kPag 22.0 psig	Noted
Instrument Gas for FCV Minimum Pressure	103 kPag 15 psig	Noted
Instrument Gas for FCV Maximum Pressure	207 kPag 30 psig	Noted
Instrument Gas PRV for SSV	Fisher 67CFR ~ 0-125psi spring ~ 250psi max inlet ~ -50°C	Noted
Instrument Gas PRV for SSV Setpoint	517 kPag 75.0 psig	Noted
Instrument Gas for SSV Minimum Pressure	483 kPag 70 psig	Noted
Instrument Gas for SSV Maximum Pressure	827 kPag 120 psig	Noted

172 ELECTRICAL INFORMATION

Electrical Area Classification at Burner	Non-Hazardous	Noted
Electrical Area Classification at Fuel Train	Zone 1	Noted
Electrical Area Classification at Control Panel	Zone 2	Noted
Available Primary Main Power	120 VAC / 60 Hz	Noted
Available Primary Main Power Source	Utility / Grid	Noted
Primary Main Power Amps	15.0 amps	Noted
Available Primary Control Power	24 VDC	Noted
Available Primary Control Power Source	TEG	Noted
Primary Control Power Amps	4.0 amps	Noted
Hazardous Area Electric Seals Installed	At the building/enclosure wall (ie. Zone 1/2 boundary), At the windbox (ie. Zone 2 / Non-hazardous boundary)	Noted
Are All Required Hazardous Area Electric Seals Installed	All Hazardous Area Electric Seals are properly installed.	Noted
Wiring Method Inside the Building \ Enclosure	Explosion-proof Junction Boxes, Rigid Conduit	Noted

181 APPLIANCE SHELL

Shell Type	Horizontal with expansion tank above	Noted
Shell OD	1829 mm 72.00 in	Noted
Shell Length / Height	7 m 24.00 ft	Noted
Shell Insulation Scope	Fully insulated without end plates	Noted
Shell Insulation Thickness	51 mm 2.00 in	Noted

APPLIANCE DATA

Page 4 of 9

182 HEATER FIRETUBE

Number of Firetubes	1	Noted
Firetube Type	Horizontal U-tube with constant diameter.	Noted
Number of Passes	2	Noted
Firetube OD	610 mm 24.00 in	Noted
Immersed Length of Assembly	7 m 22.00 ft	Noted
Firetube Surface Area	30 m ² 318 ft ²	Noted
Firetube Nominal Process Rating	3.35 GJ/h 3.18 MM Btuh	Noted
Firetube Design Process Rating	1.94 GJ/h 1.84 MM Btuh	Noted
Firetube Design Heat Flux	65.87 MJh/m ² 5800 Btuh/ft ²	Noted
Firetube Achievable Efficiency (HHV)	77.4 %	Noted
Firetube Appliance Efficiency HHV	77.1 %	Noted
Firetube Condition	Firetube acceptable	Noted

183 APPLIANCE STACK

Stack Type	Same diameter as firetube	Noted
Stack OD	610 mm 24.00 in	Noted
Stack Height	5 m 17.00 ft	Noted
Stack Wind Shroud	None	Noted
Stack Cap	None	Noted
Stack Damper	None	Noted
Stack Insulation Scope	None	Noted
Drain Port Plug	Stack drain port not installed.	Noted
Stack Cleanout Port	Reduced-size horizontal port	Noted
Stack Sampling Port	Drilled hole with plug.	Noted

184 APPLIANCE WINDBOX

Windbox Manufacturer	Wenco Energy Corp.	Noted
Windbox Serial Number	1112-622	Noted
Windbox Material	Aluminum Welded	Noted
Windbox Type	Round hinged door w/bolts	Noted
Wind Box Gasket	All required gaskets are installed and in good condition.	Noted
Windbox ID	1067 mm 42.00 in	Noted
Windbox Depth	610 mm 24.00 in	Noted
Windbox Volume	0.545 m ³ 19.242 ft ³	Noted
Windbox Size Factor	0.216 m ³ /GJh 8.05 ft ³ /MM Btuh	Noted
Windbox Gas CL to Liquid	102 cm 40 in	Noted
Windbox Gas CL to Burner Tip	122 cm 48 in	Noted
Burner tip insertion depth	20 cm 8 in	Noted
Burner Access	Hinged front door with bolts	Noted
Windbox Air Adjustment	None	Noted
Windbox Viewport	1 inch glass peep sight	Noted
Is the Ignition Transformer Module mounted correctly	Yes.	Noted

APPLIANCE DATA

Page 5 of 9

185 APPLIANCE FLAME CELL

Number of Flame Cells Per Windbox	1	Noted
Flame Cell Material	Aluminum	Noted
Flame Cell Location	Front	Noted
Flame Cell OD	1067 mm 42.00 in	Noted
Flame Cell ID	203 mm 8.00 in	Noted
Total Flame Cell Surface Area	0.86 m ² 0.00 ft ²	Noted
Flame Cell Size Factor	0.34 m ² /GJh 0.00 ft ² /MM Btuh	Noted

186 MAIN BURNER

Number of Burners per Appliance	2	Noted
Are All Main Burners Identical	Yes.	Noted
Burner Make	ACL	Noted
Burner Size	2 in 51 mm	Noted
Burner Mixer	ACL M200	Noted
Main Burner Orifice Size	#2 5.61 mm 0.22 in	Noted
Burner Sleeve	ACL venturi burner barrel	Noted
Burner Nozzle	ACL Optimizer Nozzle (with air spinner)	Noted
Burner Fuel Input Capacity (HHV)	2.638 GJ/h 2.500 MM Btuh	Noted
Burner Capacity Utilization	48 %	Noted

187 PILOT BURNER

Pilot Make	ACL	Noted
Pilot Size	1/2 in 12.7mm 0.50in	Noted
Pilot Mixer	ACL M50	Noted
Pilot Burner Orifice Size	#65 0.8890mm 0.0350in	Noted
Pilot Sleeve	Straight Pipe Nipple	Noted
Pilot Nozzle	ACL M50 pilot assembly	Noted
Pilot Location	Between Burners at 3:00 and 9:00	Noted

188 COMBUSTION AIR

Combustion Air Source	Natural Draft	Noted
Combustion Air Preheat	No Preheat	Noted
Primary Air Control Type	At burner mixer with air shutter	Noted
Secondary Air Control Type	ACL spinner with adjustable louvers	Noted

APPLIANCE DATA

Page 6 of 9

189 APPLIANCE PERMISSIVES

Liquid Low Level LSL Location	In external bridle.	Noted
Isolation Valves Installed on LSL	1/4 turn isolation valve locked and tagged.	Noted
Liquid Low Level LSL Type	Single point electric float	Noted
Liquid Low Level LSL Make	SOR 1510 ending with CS float switch ~ Class I-Div.1 ~ -40°C to 125°C	Noted
Level Switch Orientation	Manual override button points down (enabled).	Noted
Process TSHH Location	In the main tank	Noted
Process TSHH Type	Temperature switch to BMS.	Noted
Process TSHH Make	CCS 6900TE-series ~ Class I-Div.1 ~ -40°C	Noted
Process TSHH Setpoint	90 °C 194 °F	Noted
Process TSHH Separate From Process Controller	Yes.	Noted
Fuel Gas PSL Location	Upstream of SSVs	Noted
Fuel Gas PSL Type	Electric pressure switch	Noted
Fuel Gas PSL Make	CCS 6900GZE12 ~ 1-18psig range (2psi deadband) ~ Class I-Div.1 ~ -40°C	Noted
Fuel Gas PSL Setpoint	41.4 kPag 6.0 psig	Noted
Fuel Gas PSHH Location	Downstream of SSVs and upstream of FCV	Noted
Fuel Gas PSHH Type	Electric pressure switch	Noted
Fuel Gas PSHH Make	CCS 6900GZE12 ~ 3-20psig range ~ Class I-Div.1 ~ -40°C	Noted
Fuel Gas PSHH Setpoint	120.7 kPag 17.5 psig Accepted based on appliance application and high excess air in stack, there is no safety concern with the pressure high-high setpoint.	Observation
Isolation Valves Installed on High Pressure Shutdown Device	1/4 turn isolation valve locked and tagged.	Noted
Isolation Valves Installed on Low Pressure Shutdown Device	1/4 turn isolation valve locked and tagged.	Noted
Plant ESD Connected	Yes.	Noted

190 COMBUSTION SAFETY CONTROL

Combustion Safety Control Type	Prepackaged / CSA Certified.	Noted
Combustion Safety Control Make	ACL 5500 ~ CSA22.2 No.199-M89 ~ Class I-Div.2 ~ -40°C	Noted
Flame Sensor	Flame Rod	Noted
Remote BMS Connections	Interlocks to plant control system, ESD, Status	Noted
BMS Serial Number	55-12/24-092712-10	Noted
BMS Temperature Input	External temperature switch (TSHH).	Noted
TSHH Interlocked with BMS	Yes.	Noted
BMS has a pre-purge function	Yes.	Noted
Ignition Transformer Make	ACL Ignition Module ~ CSA certified ~ Class I-Div.2 ~ -40°C	Noted

APPLIANCE DATA

Page 7 of 9

192 APPLIANCE CONTROL SYSTEM

Process Control Element Location	TE in the main tank	Noted
Process Controller Type	Modulating - Pneumatic	Noted
Controller Temperature Setpoint	45 °C 113 °F	Noted
Bath Fluid Temperature	40.0 °C 104.0 °F	Noted
Process Controller Make	Kimray HT12 ~ 5-30psi pneumatic ~ -34°C to 399°C	Noted
TSH Type	Pneumatic thermostat.	Noted
Fuel FCV Make	Fisher 119 ~ 5-35psig actuation ~ 35-150psig instrument gas supply ~ 150psig max ~ -29°C	Noted
FCV 3-way Solenoid	Not installed.	Noted
FCV Speed Control Valve	SMC NAS4000-N02	Noted
Fuel Low Fire Start	Pneumatic SSV with speed control valve.	Noted
Fuel Minimum Fire Stop	Not installed.	Noted
Low Fire Start For System Over 1 MM Btuh	Yes.	Noted
Fuel Measurement Method	None	Noted

193 MAIN FUEL TRAIN

Main Fuel Manual Shut-off Valve	MAS G2E-series ball valve (1/4-2in. size)(SS) ~ CGA 3.16 ~ 125psig max ~ -40°C	Noted
Main Fuel Train Filter	Y-strainer installed upstream of main fuel train PRV and pilot take-off.	Noted
Is Appliance Manual Fuel Shut-off Easily Accessible	Yes.	Noted
Main Fuel Pressure Control Device Configuration	Single Pressure Regulator.	Noted
Appliance Main Fuel Pressure Control Device	BelGas R627 ~ 3/8in. orifice ~ 5-20psig spring ~ 300psig max inlet ~ -29°C ~ with internal relief	Noted
Appliance Main Fuel Pressure Control Device Setpoint	82.7 kPag 12.0 psig	Noted
Appliance Fuel Overpressure Protection	Two regulators in series with setpoints below the lowest rated component.	Noted
Main Safety Shut-off Valve Configuration	Single SSV with proof of closure switch	Noted
Main Safety Shut-off Valve Type	Electro-pneumatic valve(s)	Noted
Main Safety Shut-off Valve Make (single valve)	Fossil (FPS) 9650-series ~ CSA 6.5-C/I ~ 70-120psig actuation ~ 200psig max ~ -45°C	Noted
Main SSV(s) Slow Opening	Yes. Using speed control valve. SMC NAS4000-N02.	Noted
Main Burner Test Firing Valve	MAS G2E-series ball valve (1/4-2in. size)(SS) ~ CGA 3.16 ~ 125psig max ~ -40°C	Noted
Are pressure indicator locations adequate	Yes.	Noted
Are pressure indicator ranges adequate	Yes.	Noted
Are pressure test points adequate	Yes.	Noted
Main Fuel Train Piping	Carbon steel piping	Noted
Sufficient unions / flanges for maintenance	Yes.	Noted
Is Piping Adequately supported	Yes.	Noted

APPLIANCE DATA

Page 8 of 9

194

PILOT FUEL TRAIN

Pilot Fuel Take-off	From between main fuel train filter and regulator.	Noted
Pilot Fuel Manual Shut-Off Valve	MAS G2E-series ball valve - 1/4-2in. (SS) ~ CGA 3.16 ~ 125psig max ~ -40°C	Noted
Pilot Pressure Control Device Configuration	Single Pressure Regulator.	Noted
Pilot Pressure Control Device	Fisher 67CFR ~ 0-35psi spring ~ 250psi max inlet ~ -29°C	Noted
Pilot Pressure Control Device Setpoint	48.3 kPag 7.0 psig	Noted
Pilot Overpressure Protection	PSV integral to pilot PRV.	Noted
Pilot OPPD Setpoint	69 kPag 10.0 psig	Noted
Pilot SSV Configuration	Single SSV	Noted
Pilot SSV Type	Electric Solenoid valve(s)	Noted
Pilot SSV Make (single valve)	ASCO HV426716002 24VDC ~ CSA 6.5-C/I ~ Class I-Div.1 ~ 50psig MOPD ~ 100psig SWP ~ -40°C	Noted
Pilot Test Firing Valve	MAS G2E-series ball valve (1/4-2in. size)(SS) ~ CGA 3.16 ~ 125psig max ~ -40°C	Noted
Are pressure indicator locations adequate	Yes.	Noted
Are pressure indicator ranges adequate	Yes.	Noted
Are pressure test points adequate	Yes.	Noted
Pilot Fuel Train Piping	Carbon steel piping and stainless steel tubing	Noted
Sufficient unions / flanges for maintenance	Yes.	Noted
Is Piping Adequately supported	Yes. Pilot fuel train piping outside of the enclosure is tied with the main fuel train piping for support.	Accepted

224

INSTALLATION - FLAMMABLE GAS VENTING

Vent Piping Materials	Stainless steel tubing	Noted
Is Sour Gas Vented	No	Noted
Are Vent Line Connection Sizes to Devices Maintained	Yes	Noted
Are Combined Vents Increased in Size	Combined vents are properly installed.	Noted
Are There Any Vent Lines Under The Building / Enclosure	No	Noted
Are Vent Terminations Away From Building Openings and Air Intakes	Yes	Noted
Are Any Vent Line Terminations Close to Operating Personnel	No	Noted
Are Vent Terminations Equipped With Screens	All required screens are properly installed.	Noted
Are Vent Line Terminations Protected From Water Entry	Yes	Noted
Is Piping Adequately Supported	Yes.	Noted
Fuel Supply Line Pressure Control Device Properly Vented	Yes	Noted
Fuel Supply Overpressure Protection Device Properly Vented	Yes	Noted

APPLIANCE DATA

Page 9 of 9

261

STACK READINGS

Source of Combustion Readings	Installer	Noted
Date of Combustion Readings	05 Apr 2018	Noted
Main Burner Pressure	83 kPag 12.0 psig	Noted
Process Temperature	45 °C 113 °F	Noted
Ambient Temperature	4 °C 39 °F	Noted
Stack Temperature	338 °C 640 °F	Noted
Stack Oxygen	5.7 %	Noted
Stack CO	0 ppm	Noted
Stack NOx	56 ppm	Noted
Excess Air	33.3 %	Noted
Draft Pressure	-0.161 in.WC	Noted
Efficiency (HHV)	77.1 %	Noted
Stack Temperature Notes	High. Stack temp between 350-650°F/195-360°C above bath temp. May result in lower efficiency.	Noted
Excess Air Notes	O2 is in the high range of 5.5-8.0% and may result in lower efficiency.	Noted
Carbon Monoxide Notes	Less than 50 ppm is ideal.	Noted
NOx Notes	High but typical for this type of burner, in the range of 50-100 ppm (3% O2 basis).	Noted
Efficiency Notes	Efficiency is acceptable in the range of 72 to 78%.	Noted

END OF REPORT SECTION

FIELD INSPECTION PHOTOS 20210108_1726

Appliance

Tag Number

LOC 01-04-043-13-W5

Serial No. NWP-08562-001-A

Owner

Company Birchill Canada Limited Partnership

Plant Birchill HZ Brazr

Area



Overall view of appliance



Lease sign



Appliance rating plate



Windbox name plate



Windbox - overall view



Burner Management System - BMS



BMS Serial Number



BMS wiring



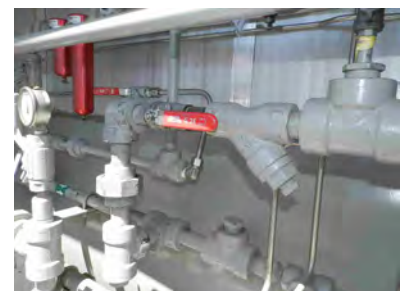
Overall view of fuel train



Upstream overpressure protection - PSV



Line Pressure Regulator



Manual shut-off valve and Y-strainer



Main fuel train pressure regulator - PRV



PSLL calibration tag



PSLL - Low pressure shutdown



Isolation valve on pressure switch (PSLL)



Main fuel train safety shut-off valve - SSV



Instrument gas regulator (PRV) to SSV



Speed control valve for SSV



FCV - Main flow control valve



Instrument gas regulator (PRV) to FCV



TC - pneumatic process temperature control



Speed control valve for FCV



PSHH - High pressure shutdown



PSHH calibration tag



Main burner test firing valve



Pilot manual fuel shut-off valve



Pilot pressure regulator - PRV



Pilot safety shut-off valve - SSV



Pilot fuel train not supported (NON-CONFORMANCE)



Pilot fuel train outside enclosure not supported (NON-CONFORMANCE)



Pilot burner test firing valve



Main burner and pilot close-up



LSLL - Low bath fluid shutdown



TSHH - High temperature shutdown



Stack



Stack sampling port



Vent lines



Vent lines



Vent line terminations,Vent lines



Vent lines



Vent line terminations



Hazardous area conduit seal at the wall



ENEFEN temporary Field Inspection Plate

PROOF OF CORRECTIONS PHOTOS

20210108_1726

Appliance

Tag Number

Map Location 01-04-043-13-W5

Serial No. NWP-08562-001-A

Owner

Company Birchill Canada Limited Partnership

Plant Birchill HZ Brazr

Area



Pilot fuel train tied with main fuel train for support



Pilot fuel train tied with main fuel train for support



Pilot fuel train tied with main fuel train for support

RATING PLATE

20210108_1726

Page 1 of 1

NFN Number	NFN1805015	Product Type	Design Code Field Approval		
Design Code	302C-A5-NW002	Project Status	Appliance Approved		
Field Evidence By	Travis Todd	Owner	Birchill Canada Limited Partnership	LOC	01-04-043-13-W5
Field Evidence	12 Jun 2018	Plant	Birchill HZ Brazr	Tag	
Report by	Christopher Pascua	Area		Serial	NWP-08562-001-A
P.Eng. Review by	Jozef Jachniak, P. Eng.	Contact	Garrett Umbach	Phone	250-263-4606

FIRED APPLIANCE RATING PLATE



Dynamic Combustion

RR1 Site 6 Compartment 14, Fort St. John, BC V1J 4M6

Appliance Manufacturer	NWP Industries Inc.
Built Date	2012
Serial Number	NWP-08562-001-A
New Install or Upgrade	Upgrade
Installation Company	Dynamic Combustion
Installation Project Number	2018-033
Appliance Type	Line Heater
Map Location	01-04-043-13-W5
Elevation Above Sea Level	3750 ft 1143 m
Appliance Temperature Rating	-29°C to 40°C -20°F to 104°F
Primary Fuel Type	Produced Gas
Primary Fuel Quality	Sweet < 5ppm H2S and Wet
Primary Fuel Inlet Pressure	689 kPag 100.0 psig
Primary Fuel Protected Pressure	1034 kPag 150.0 psig
Secondary Fuel Type	Not approved for secondary fuel use
Pilot Fuel Type	Produced Gas
Pilot Fuel Quality	Sweet < 5ppm H2S and Wet
Pilot Fuel Inlet Pressure	689 kPag 100.0 psig
Appliance Max Fuel Input (HHV)	2.52 GJ/h 2.39 MM Btuh
Number of Burners per Appliance	2
Max. Fuel Gas Burner Pressure	83 kPag 12.0 psig
Min. Fuel Gas Burner Pressure	6.9 kPag 1.0 psig
Pilot Fuel Gas Burner Pressure	48 kPag 7.0 psig
Instrument Gas Type	Produced Gas
Instrument Gas Minimum Pressure	483 kPag 70 psig
Electrical Area Class At Burner	Non-Hazardous
Electrical Area Class At Fuel Train	Zone 1
Electrical Area Class At Control Panel	Zone 2
Primary Main Power	120 VAC / 60 Hz 15.0 amps
Primary Control Power	24 VDC 4.0 amps


FUEL FIRED APPLIANCE FIELD APPROVAL
ENEFE ENERGY EFFICIENCY ENGINEERING LTD.

Field Approval Number: NFN1805015

Approval Date: 08 Jan 2021

Approved By: Jozef Jachniak, P. Eng.

ENEFE evaluation is based on the authority given to Professional Engineers by Alberta Municipal Affairs as per the requirements of the Gas Code Regulation Variance VAR-GAS-03-19. This approval represents the results of a single field inspection and is not a product certification. This approval is void if this appliance is altered or relocated.

ENEFE Energy Efficiency Engineering Ltd.

82 52A ST • Delta, BC, V4M 2Z5 • +1-780-665-2863

www.ENEFE.com

FUEL COMPOSITION REPORT

20210108_1726

Page 1 of 1

NFN Number	NFN1805015	Product Type	Design Code Field Approval		
Design Code	302C-A5-NW002	Project Status	Appliance Approved		
Field Evidence By	Travis Todd	Owner	Birchill Canada Limited Partnership	LOC	01-04-043-13-W5
Field Evidence	12 Jun 2018	Plant	Birchill HZ Brazr	Tag	
Report by	Christopher Pascua	Area		Serial	NWP-08562-001-A
P.Eng. Review by	Jozef Jachniak, P. Eng.	Contact	Garrett Umbach	Phone	250-263-4606

Fuel Usage	Pilot Fuel	Main Fuel
Fuel Type	Produced Gas	Produced Gas
Fuel Info Source	Estimated	Estimated
Reported Date		
Fuel Temperature °C/°F	15.6 / 60.1	15.6 / 60.1
C1 Methane	0.9300	0.9300
C2 Ethane	0.0600	0.0600
C3 Propane	0.0020	0.0020
C4 Butane	0.0000	0.0000
C5 Pentane	0.0000	0.0000
C6 Hexane	0.0000	0.0000
C7 heptane	0.0000	0.0000
C8 as Octane	0.0000	0.0000
C ₆ H ₆ Benzene	0.0000	0.0000
CO Carbon Monoxide	0.0000	0.0000
H ₂ Hydrogen	0.0000	0.0000
S Sulfur Vapor	0.0000	0.0000
COS Carbonyl Sulfate	0.0000	0.0000
CS ₂ Carbon Disulfide	0.0000	0.0000
C ₂ H ₆ S ₂ Dimethyl Disulfide	0.0000	0.0000
CH ₃ SH Mercaptan	0.0000	0.0000
O ₂ Oxygen	0.0000	0.0000
N ₂ Nitrogen & Inert	0.0050	0.0050
CO ₂ Carbon Dioxide	0.0030	0.0030
SO ₂ Sulfur Dioxide	0.0000	0.0000
Molecular Weight MW	17.0834	17.0834
Fuel Density lb/ft ³ kg/m ³	0.045 0.7245	0.045 0.7245
Specific Volume ft ³ /lb m ³ /kg	22.109 1.3803	22.109 1.3803
Specific Gravity	0.5910	0.5910
Specific Heat Btu/lb/°F kJ/kg/°C	0.5081 2.1274	0.5081 2.1274
Sulfur Content By Weight	0.0000	0.0000
HHV English Btu/scf Btu/lb	1050 23300	1050 23300
HHV Metric MJ/m ³ MJ/kg	39.2 54.2	39.2 54.2
LHV English Btu/scf Btu/lb	950 21000	950 21000
LHV Metric MJ/m ³ MJ/kg	35.4 48.9	35.4 48.9
Combustion O ₂ ft ³ /ft ³	2.0800	2.0800
H ₂ O in POC ft ³ /ft ³	2.0480	2.0480
CO ₂ in POC ft ³ /ft ³	1.0590	1.0590
N ₂ in POC ft ³ /ft ³	7.8772	7.8772
SO ₂ in POC ft ³ /ft ³	0.0000	0.0000

FINAL SETPOINTS

20210108_1726

NFN Number	NFN1805015	Product Type	Design Code Field Approval		
Design Code	302C-A5-NW002	Project Status	Appliance Approved		
Field Evidence By	Travis Todd	Owner	Birchill Canada Limited Partnership	LOC	01-04-043-13-W5
Field Evidence	12 Jun 2018	Plant	Birchill HZ Brazr	Tag	
Prepared By	Christopher Pascua	Area		Serial	NWP-08562-001-A
Reviewed By	Jozef Jachniak, P. Eng.	Contact	Garrett Umbach	Phone	250-263-4606

Main Burner Maximum Pressure	83 kPag 12.0 psig
Main Burner Minimum Pressure	6.9 kPag 1.0 psig
Pilot Pressure	48 kPag 7.0 psig
Primary Fuel Inlet Pressure	689 kPag 100.0 psig
Primary Fuel OPPD	1034 kPag 150.0 psig
Line Pressure Control Device	689 kPag 100.0 psig
Pilot Fuel Inlet Pressure	689 kPag 100.0 psig
Pilot Fuel OPPD	1034 kPag 150.0 psig
Instrument Gas Inlet Pressure	689 kPag 100.0 psig
Instrument Gas PRV for FCV	152 kPag 22.0 psig
Instrument Gas for FCV Minimum Pressure	103 kPag 15 psig
Instrument Gas for FCV Maximum Pressure	207 kPag 30 psig
Instrument Gas PRV for SSV	517 kPag 75.0 psig
Instrument Gas for SSV Minimum Pressure	483 kPag 70 psig
Instrument Gas for SSV Maximum Pressure	827 kPag 120 psig
Process TSHH	90 °C 194 °F
Fuel Gas PSLL	41.4 kPag 6.0 psig
Fuel Gas PSHH	120.7 kPag 17.5 psig
Controller Temperature	45 °C 113 °F
Appliance Main Fuel Pressure Control Device	82.7 kPag 12.0 psig
Pilot Pressure Control Device	48.3 kPag 7.0 psig
Pilot OPPD	69 kPag 10.0 psig

DESIGN SPECIFICATIONS			
Owner Project Number		--	
Owner Name		Birchill Canada Limited Partnership	
Client Name		Dynamic Combustion	
Plant / Branch		Birchill HZ Brazr	
Area / Department		--	
Map Location		01-04-043-13-W5	
Appliance Function		Indirect Fired Gas Heating	
Appliance Tag Number		--	
Primary Main Power		120 VAC / 60 Hz 15.0 amps	
Electrical Area Class At Fuel Train		Zone 1	
Electrical Area Class At Control Panel		Zone 2	
Electrical Area Class At Burner		Non-Hazardous	
Burner Management System		Prepackaged / CSA Certified.	
Type of Flame Safeguard Control		Single Burner FSG	
Primary Control Power		24 VDC 4.0 amps	
<div>PROJECT NOTES</div> <div>This document is subject to a Design Approval in Principle. The completed and working appliance is subject to a compulsory Field Inspection. Both steps must be dated and signed and sealed by a qualified professional engineer in fields provided.</div> <div>INSTALLATION MAY REQUIRE LOCAL PERMITS</div> <div>No part substitution allowed without written authorization from ENEFEN. In addition, the design and the installation of the appliance may be subject to other local gas safety regulations, permits, and Field Approvals. Field Approval and all permits are void if this appliance is altered or relocated.</div>			
REVISION		REVISION DESCRIPTION	
DATE			
<div>Birchill Canada Limited Partnership</div> <div>Birchill HZ Brazr -</div> <div>01-04-043-13-W5</div> <div>SYSTEM WIRING DIAGRAM</div> <div>Line Heater</div> <div>2.52 GJ/h 2.39 MM Btuh</div>			
SIZE: B		NFN1805015-E200	
SCALE: None		01/08/2021	
REV: 0		SHEET 1 OF 1	

FIELD DEVICES		FIELD DEVICES			
<div><div>ZSC203</div><div>IS ZENER BARRIER MTL7787+ FOR MAXON8000</div><div><div>1</div><div>2</div><div>3</div><div>4</div><div>5</div><div>6</div><div>7</div><div>8</div><div>9</div><div>10</div><div>11</div><div>12</div><div>13</div><div>14</div><div>15</div><div>16</div><div>17</div><div>18</div><div>19</div><div>20</div><div>21</div></div><div><div>Proof of Closure Main SSVs (Jumper if not used)</div><div>Temperature Control Switch (Jumper if not used)</div><div>Remote START close to start (Jumper if not used)</div><div>Remote Emergency Shut Down close to run open to stop (Jumper if not used)</div><div>High Gas pressure switches in series close to run open to stop</div><div>Low Gas pressure switch close to run open to stop</div><div>High Temp Switch close to start open to stop (Jumper if not used)</div><div>Low Level Switch close to start open to stop (Jumper if not used)</div><div>Aux 1 S/D (Jumper if not used)</div><div>Remote ALARM dry contact opens on flame fault</div></div><div>STATUS TO PLC, DCS, RTU</div></div> <div>Optional</div> <div><div>ZSC 203</div><div>START</div><div>Optional</div><div>ESD</div><div>Optional</div><div>PSHH 206</div><div>PSLL 104</div><div>TSHH 102</div><div>LSLL 101</div><div>Optional</div><div>PLC</div></div>		<div>ACL 5500</div> <div>Burner Management System Controller</div> <div><div>22</div><div>23</div><div>24</div><div>25</div><div>26</div><div>27</div><div>28</div><div>29</div><div>30</div><div>31</div><div>32</div><div>33</div><div>34</div><div>35</div><div>36</div><div>37</div><div>38</div><div>39</div><div>40</div><div>41</div><div>42</div></div> <div><div>DC power supply input 12-28VDC</div><div>Voltage output to ignition coil with flame rod ionization current return Grounding required</div><div>Power to Main "A" SSV(s) 2A Max.</div><div>Power to Pilot "A" SSV(s) 2A Max.</div><div>Voltage output to ignition coil with flame rod ionization current return Grounding required</div><div>Power to Main "B" SSV(s) 2A Max.</div><div>Power to Pilot SSV 2A Max.</div></div> <div><div>IGNITION TRANSFORMER INSIDE ACL5500 ENCLOSURE</div><div>IGNITION WIRE MAXIMUM 10'</div><div>Remote option available if ACL enclosure needs to be more than 10' from burner</div><div>GROUND WIRE TO FLAME ROD</div><div>IS ZENER BARRIER MTL7787+ FOR MAXON8000</div><div>SDV 203</div><div>SSV304</div></div> <div><div>POWER SUPPLY Minimum 30 Watts Continuous</div><div>IGN 306</div><div>BE 306</div><div>SDV 203</div><div>SSV 304</div></div>		FIELD DEVICES	
DESIGN CODE: 302C-A5-NW002					

NOTES

1.

All electrical work shall be performed by qualified personnel.

2.

All electrical materials and methods shall be appropriate for the specified environment and Electrical Classification Areas and in compliance with the CSA22.1 Canadian Electric Code. Wiring shall be 14Ga minimum, except for thermocouple wiring which may be 16Ga.

3.

Electrical seals and wiring methods shall be installed as required by the CSA 22.1-12 Canadian Electrical Code.

4.

PSLL and PSHH shall be mounted as close as practicable above fuel train so that they are easily accessible for calibration, are self-draining, and possibility of freezing is minimized. Quarter-turn isolating ball valve shall be in L.O. (locked open) position.

5.

Instrument tubing union shall be installed between the valve and the switch, and switch wired using flex cable to allow partial removal for calibration.

6.

Zener barriers can be used to install safety shut-off valves with a Class 1 Div 2 rating in a Class 1 Zone 1 area.

INSPECTION BODY REQUIREMENTS USED AS BASIS FOR EVALUATION		GAS APPLIANCE DESIGN APPROVED IN PRINCIPLE SUBJECT TO FIELD INSPECTION		GAS APPLIANCE FIELD INSPECTION PASSED FIELD APPROVAL COMPLETE		<div><div><div></div><div>NWP</div><div>NWP INDUSTRIES INC.</div></div><div>Copyright © 2018 Drawing: NFN1805015-200 Design By: ENEFEN Engineering Ltd. Drawn By: ENEFEN Engineering Ltd.</div></div>
<div><div>ISO/IEC 17020:2012 Requirements for the operation of inspection bodies</div><div>SCC Requirements & Guidance - Inspection Body Accreditation Program: ASB_RG_IBAP_v0.1_2016-02-25</div><div>Any of the following codes that are relevant to this installation:<div><div>CAN/CSA-B149.1-15 Natural gas and propane installation code</div><div>CAN/CSA-B149.2-15 Propane storage and handling code</div><div>CAN/CSA-B149.3-15 Code For The Field Approval Of Fuel-Related Components On Appliances and Equipment</div><div>CSA STD C22.1-15 Canadian Electrical Code, Part I Safety Standard for Electrical Installations</div><div>CAN/BNQ 1784-000 Canadian Hydrogen Installation Code</div><div>CSA B51-14 Boiler, pressure vessel and pressure piping code</div><div>Relevant requirements of the National Building Code of Canada and the National Fire Code of Canada</div></div></div></div>		<div>APPROVED BY: Jozef Jachniak, P. Eng. APPROVED DATE: 08 Jan 2021 PERMIT TO PRACTICE P08977</div> <div><div>PROFESSIONAL ENGINEER ALBERTA</div><div>JOZEF JACHNIAK</div></div>		<div>APPROVED BY: Jozef Jachniak, P. Eng. APPROVED DATE: 08 Jan 2021 PERMIT TO PRACTICE P08977</div> <div><div>PROFESSIONAL ENGINEER ALBERTA</div><div>JOZEF JACHNIAK</div></div>		
Under the authority given to Professional Engineers by Alberta Municipal Affairs as per the requirements of the Gas Code Regulation Variance VAR-GAS-03-19.						