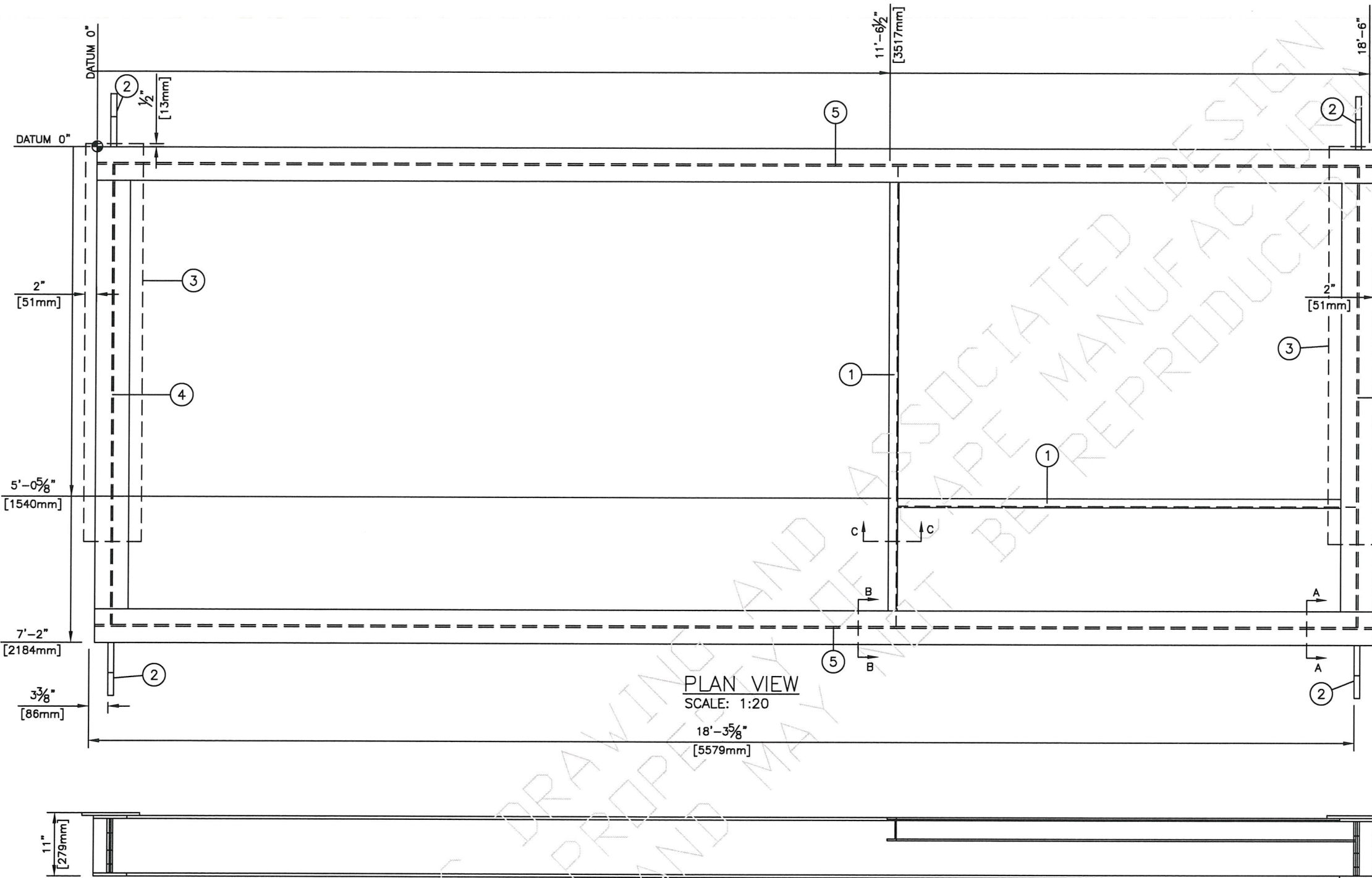
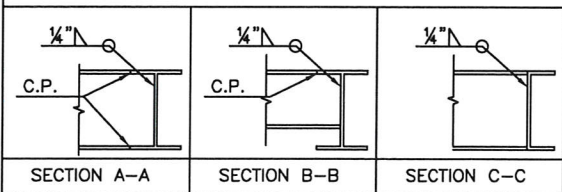


PROPERTY OF CAPE MANUFACTURING LTD. THE CONTENTS OF THIS DRAWING ARE CONFIDENTIAL AND MAY NOT BE REPRODUCED WITHOUT WRITTEN PERMISSION



PLAN VIEW
SCALE: 1:20
18'-3 5/8"
[5579mm]

ELEVATION VIEW
SCALE: 1:20

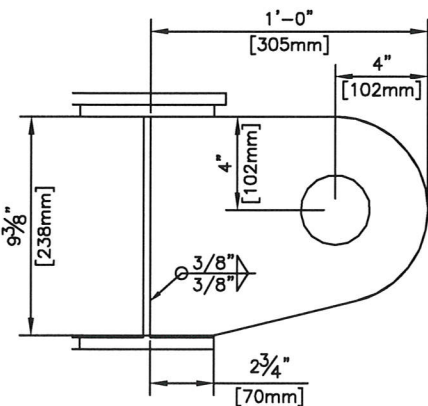


AS BUILT

BILL OF MATERIAL

MARK	QTY	LONG ANNOTATION	LENGTH	WIDTH	WEIGHT
1	2	C4X5.4	79 7/8"		35.94
2	4	PL-1" (LIFT LUGS SEE DETAIL)	12"	9 3/8"	101.92
3	2	PL-1/2" (BASE PLATE)	69"	10"	195.79
4	2	W10X30	79 7/8"		380.81
5	2	W10X30	222"		1110.00

TOTAL WEIGHT: 1824.47 LBS



- NOTES:
- ALL DIMENSIONS IN INCHES.
 - MATERIAL SHALL CONFORM TO THE FOLLOWING GRADES OF CSA-G40.21-M (LATEST EDITION)
 - HOLLOW STRUCTURAL SECTIONS-----44W.
 - WIDE FLANGE SECTIONS-----44W.
 - PLATE AND ROLLED SECTION-----44W.
 - ALL OTHER SECTIONS-----44W.
 - SURFACE PREPARATION TO BE CARRIED OUT IN COMPLIANCE WITH:
 - SSPC-SP-2.
 - SURFACE FINISH TO BE:
 - 1 COAT PRIMER
 - 1 SHOP COAT OF CLOVERDALE OR EQUAL GREY ENAMEL
 - CONNECTIONS SHALL BE OF 1/4" MINIMUM WELD SIZE (E-49XX) ALL AROUND. UNLESS OTHERWISE NOTED.
 - COPE ALL FRAMING MEMBERS INTO ONE ANOTHER, GRIND TOP FLUSH AS REQUIRED. (UNLESS NOTED OTHERWISE)
 - SEE DETAIL FOR CHECKER PLATE WELDING.
 - NO WELD GAPS HAVE BEEN USED FOR LISTED LENGTHS, FABRICATOR TO MAINTAIN OVERALL DIMENSIONS.
 - CHECKER PLATE SHOWN AS HIDDEN LINE.
 - USE 2"x2"x1/4" ANGLE UNDER CHECKER PLATE WHERE NEEDED.
 - LINE HEATER WEIGHT: 28,000LBS
 - PACKAGE WEIGHT: 33,500LBS

NO.	DATE	REVISION	BY	APP
1	17-09-18	AS BUILT		
0	17-06-05	ISSUED FOR CONSTRUCTION	KG	JB

CAPE	CAPE MANUFACTURING LTD. PO BOX# 216 HALKIRK, AB T0C 1M0 TELEPHONE: (403) 884-2442	CAPE
-------------	--	-------------

CLIENT: BIRCHILL CANADA LTD. PARTNERSHIP	
c/o: OEL PROJECTS LTD.	
LSD: 11-13-43-13 WSM	
DATE: 17-04-20	
JOB NO.: CML-170649	
SCALE: SEE DWG.	
DRAWN BY: KG	
CHECKED BY: DH	
SHEET 1 OF 1	
7'-2" x 18'-6" SKID	
W10x30# MEMBERS	
4 LIFTING LUGS	
DWG NO.: CML-170649S	REV. 1