

Client: Calroc Industries Inc.			Material: Carbon Steel			Date: Jan 3, 2025				
Location: Blackfoot Shop			Codes: Client Information			Dispatch #: 68609				
WO#: 31089; Job#: SN# 31089-1			Item(s): FWKO Shell			Report Page #: 1 of 1				
Method: Thickness		Surface Cond.: Painted		Thickness: 0.187"		Procedure: UT-MUT-UTT-006-TQ-R6				
Equipment: Evident		Model: 38DL Plus		Serial #: 234060303		Cal. Due Date: 2025-05-01				
Cal. Block(s): #12-2511: 5-Step Wedge Steel;				Cable Type: Coaxial		Length: 3ft				
				Couplant: Sonogel		Batch #: 485				
Ultrasonic Transducers					Calibration Settings					
Test Angle	Type	Frequency (MHz)	Serial #	Diameter	Reference Reflector	Reference		Scan Sensitivity	Transfer Loss Value	Range
						dB	% FSH			
0°	Single	7.5	V2575	0.375"	1st BW	60	80	n/a	0	0.500"

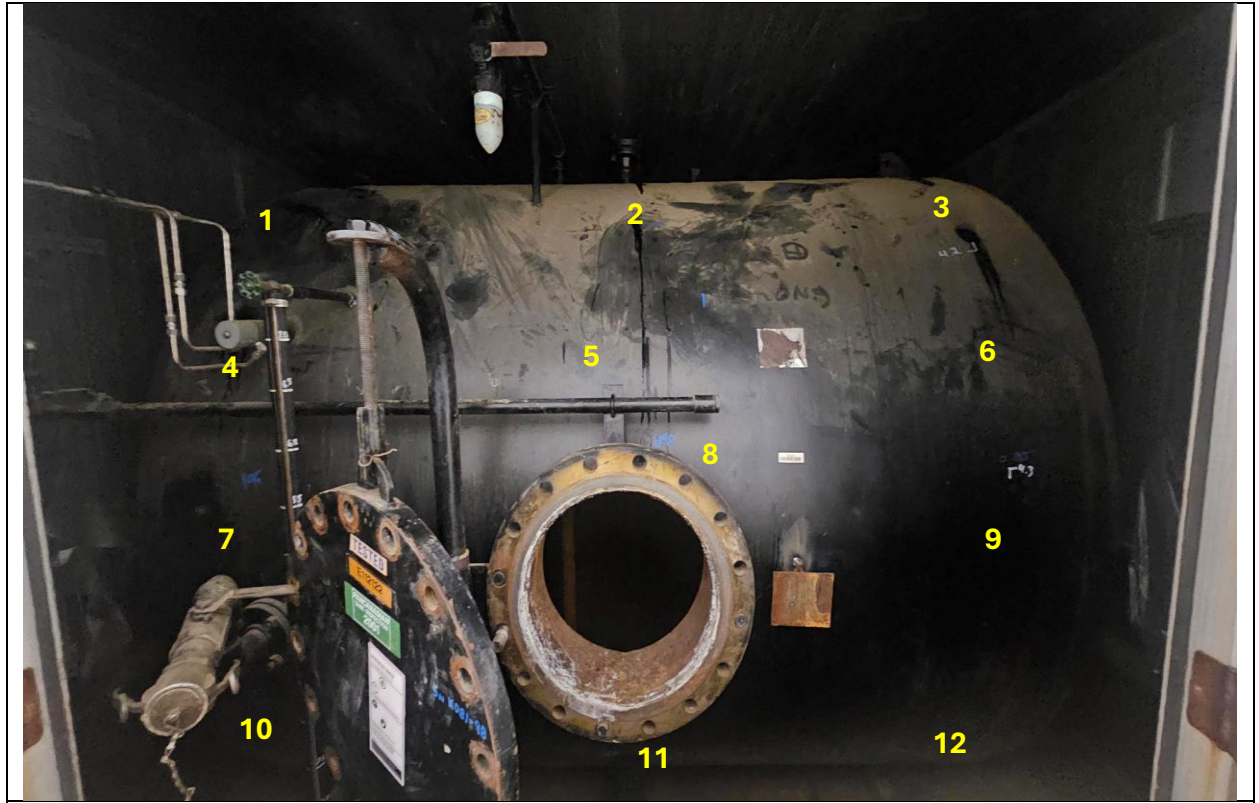
Testing Results:

**Vessel Type: FWKO**  
**Serial No. 31089-1**  
**Reg# n/a**  
**Shell nom. 0.187"**  
**Head nom. 0.250"**

**Scope:** UT thickness verification on the following:

NDT#	Description:	Nominal Wall Thickness:	Material:	Current Thickness:	Comments:
01	Top Shell	0.187"	Carbon Steel	0.189"	
02	Top Shell	0.187"	Carbon Steel	0.186"	
03	Top Shell	0.187"	Carbon Steel	0.177"	
04	Mid Shell	0.187"	Carbon Steel	0.186"	
05	Mid Shell	0.187"	Carbon Steel	0.182"	
06	Mid Shell	0.187"	Carbon Steel	0.181"	
07	Mid Shell	0.187"	Carbon Steel	0.194"	
08	Mid Shell	0.187"	Carbon Steel	0.190"	
09	Mid Shell	0.187"	Carbon Steel	0.185"	
10	Bottom Shell	0.187"	Carbon Steel	0.186"	
11	Bottom Shell	0.187"	Carbon Steel	0.181"	
12	Bottom Shell	0.187"	Carbon Steel	0.178"	

Testing Limitations: No					Continuance Report: PDF Attachment(s)						
Unit #: 48		KMs: 30		LOA: No		Interpreter: Steve Garvey (Sign): <i>Steve Garvey</i>					
Technician Time				Assistant Time				SG — APPLIED ON 2025-01-03			
Reg: 2.50	OT1: 0	OT2: 0	Shift: 0	Reg: 0	OT1: 0	OT2: 0	Shift: 0	CGSB #: 17594	CGSB Level: 1	SNT-TC-1A Level: 2	
Consumables (Item x Qty): Standard Couplant Hours x 2.5;							I am in full agreement with the contents and charges applicable to this report.				
Personnel: Steve Garvey							Client (Print):			Date:	
							Client (Sign):				



**SN#31089**