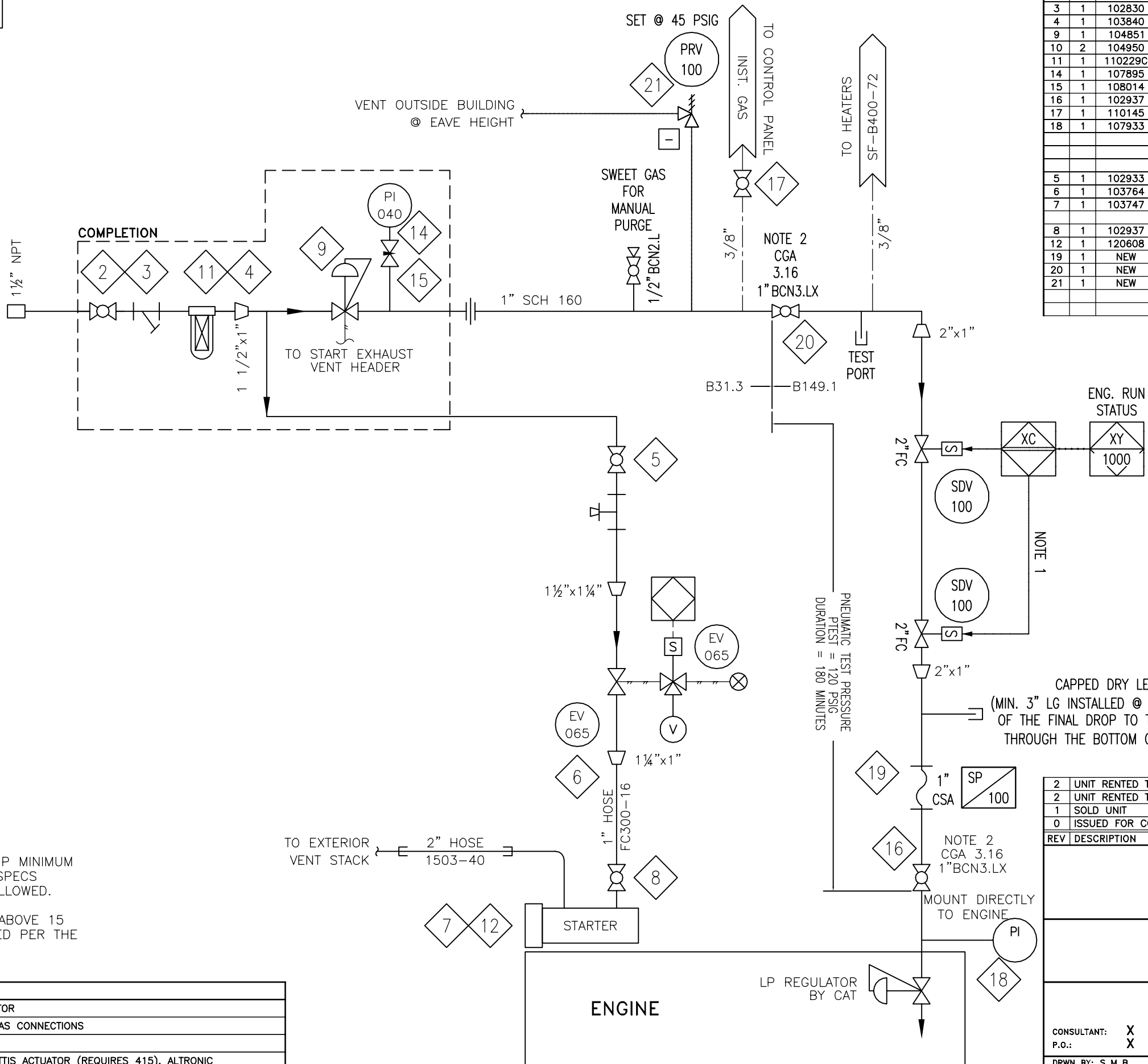


FUEL GAS
RATED 70 SCFM
@ 120 PSIG

START GAS
RATED 650 SCFM
@ 120 PSIG
PSV SET @ 165 PSIG
(NOT SUPPLIED)

ALL SERVICE LINES OPERATING ABOVE 15
PSIG MUST BE PRESSURE TESTED PER THE
PROCEDURE IN QC MANUAL

OPTION No.	OPTION DESCRIPTION
<input type="checkbox"/> 2202A	UTILITY GAS FILTER SEPARATOR
<input type="checkbox"/> 2204A	SEPARATE FUEL & START GAS CONNECTIONS
<input type="checkbox"/> 2206A	FUEL GAS FLOW METER
<input type="checkbox"/> 2208A	UTILITY ESD VALVE C/W BETTIS ACTUATOR (REQUIRES 415), ALTRONIC
<input type="checkbox"/> 7001A	INSTRUMENT GAS SUPPLY BYPASS FOR HEATERS & ESD LOOP



BILL OF MATERIAL			
ITEM	QTY	EFX CODE	DESCRIPTION
2	1	102933	VALVE, BALL, 1-1/2" NPT, 2000# WOG, RP, 316SS, NACE C/W
3	1	102830	STRAINER, Y, 1-1/2" NPT, 1480 PSIG MAWP, CS, 1/32" SS SCREEN
4	1	103840	FILTER,FUEL,1-1/2" NPT C/W ELEMENTS & SS PLUG[HEADLINE, 385A-S453P]
9	1	104851	REGULATOR, 1" NPT, DI, 1/2" OR, 15-40# SPR RNG, SET @ 30 PSIG
10	2	104950	VALVE, CONTROL, 1" NPT, CAST IRON, 9/16" OR, 5-35 PSI, ON/OFF, DUNGS
11	1	110229C	SUPPORT, FUEL GAS FILTER, B-SERIES
14	1	107895	GAUGE, PRESSURE, BM, 2-1/2" LF, 0-200 PSI DUAL, 1/4" NPT
15	1	108014	VALVE, NEEDLE, 3/4" MNPT X 1/2" FNPT,CS, [CENTURY,CM11L-3-M64T-CN]
16	1	102937	VALVE, BALL, 1" NPT, 2000# WOG, RP, 316SS, NACE, CSA
17	1	110145	VALVE, BALL, 3/8" NPT, 2000# WOG, FP, SS, 2 PIECE C/W LOCKING HANDLE
18	1	107933	GAUGE, PRESSURE,CBM,1 1/2" DRY, 0-60 PSI DUAL, 1/8" NPT [WIKI, 111]
			BILL OF MATERIAL: M 121953-1 : FUEL GAS
5	1	102933	VALVE, BALL, 1-1/2" NPT, 2000# WOG, RP, 316SS, NACE C/W
6	1	103764	VALVE, RELAY, GAS, 1-1/4" NPT, MAWP 450 PSI
7	1	103747	STARTER, AIR/GAS, STD 120-55 PSIG, PRE-ENGAGED
8	1	102937	VALVE, BALL, 1" NPT, 2000# WOG, RP, 316SS, NACE C/W LOCKING
12	1	120608	FLANGE, STARTER EXHAUST,STRAIGHT, 2" NPTM, CS [TDI, T30-27398]
19	1	NEW	HOSE, 1", CSA
20	1	NEW	VALVE, BALL, 1" NPT, 2000# WOG, RP, 316SS, NACE, CSA
21	1	NEW	PRESSURE RELIEF VALVE, FISHER 1805, SET @ 30 PSIG

ENERFLEX		UNIT NO.	05090300
NOTICE:			
THE FUEL GAS TRAIN FOR THIS PACKAGE IS COMPLIANT WITH CSA B149.1 NATURAL GAS AND PROPANE INSTALLATION CODE.			
THE DESIGN OF THIS TRAIN HAS BEEN EVALUATED AND DEEMED TO BE IN COMPLIANCE WITH THIS CODE IN ACCORDANCE WITH INTERTEK LETTER OF ACCREDITATION, LETTER REPORT 102729301C00-002.			
ENGINE MANUFACTURER		ENGINE MODEL	
WAUKESHA		H24GL	
FUEL TYPE		FUEL INLET PRESSURE (PSIG)	
NATURAL GAS		30 PSIG	
ADVERTISED POWER (HP)		MAX. INPUT RATING (BTU/HR)	
530		4,000,000 BTU/HR	
SITE ALTITUDE (FASL)		ALTITUDE ADJUSTED POWER (HP)	
3500 TO 8000		530 TO 410	

NOTES:

1. REFER TO ELECTRICAL WIRING DIAGRAM FOR DETAILS.
2. VALVE TO BE INSTALLED ABOVE GRATING.

ISSUED FOR CONSTRUCTION
NAME D. DAVIDSON DATE JAN 12/18

2	UNIT RENTED TO YOHO	18/01/12	TS	BH
2	UNIT RENTED TO ROSKA	17/06/20	TS	BH
1	SOLD UNIT	06/04/24	LHC	SS
0	ISSUED FOR CONSTRUCTION	05/10/21	LHC	SS
REV	DESCRIPTION	DATE:	DRWN BY:	CHKD BY:

<h1>ENERFLEX</h1>			
<p>SERVICE FLOW</p> <p>FUEL START GAS (OP 22)</p> <p>B530 / B530X</p>			
<p><u>ENERFLEX RENTALS</u></p>			
<p>CONSULTANT: X</p> <p>P.O.: X</p>		<p>RETROFIT JOB #:E002562-01</p> <p>LSD: 050903</p> <p>JOB No.: 050903</p>	
<p>DRWN BY: S M B</p> <p>DATE: JAN 6 05</p> <p>SCALE: N T S</p>		<p>DESIGN BY: X</p> <p>CHKD BY: X</p> <p>APPVD BY: X</p>	<p>DATE: X</p> <p>DATE: X</p> <p>DATE: X</p>
		<p>DWG No.</p> <p>SF-050903-22</p>	<p>REV</p> <p>22</p>