

**E10
BUILDING HEATER**

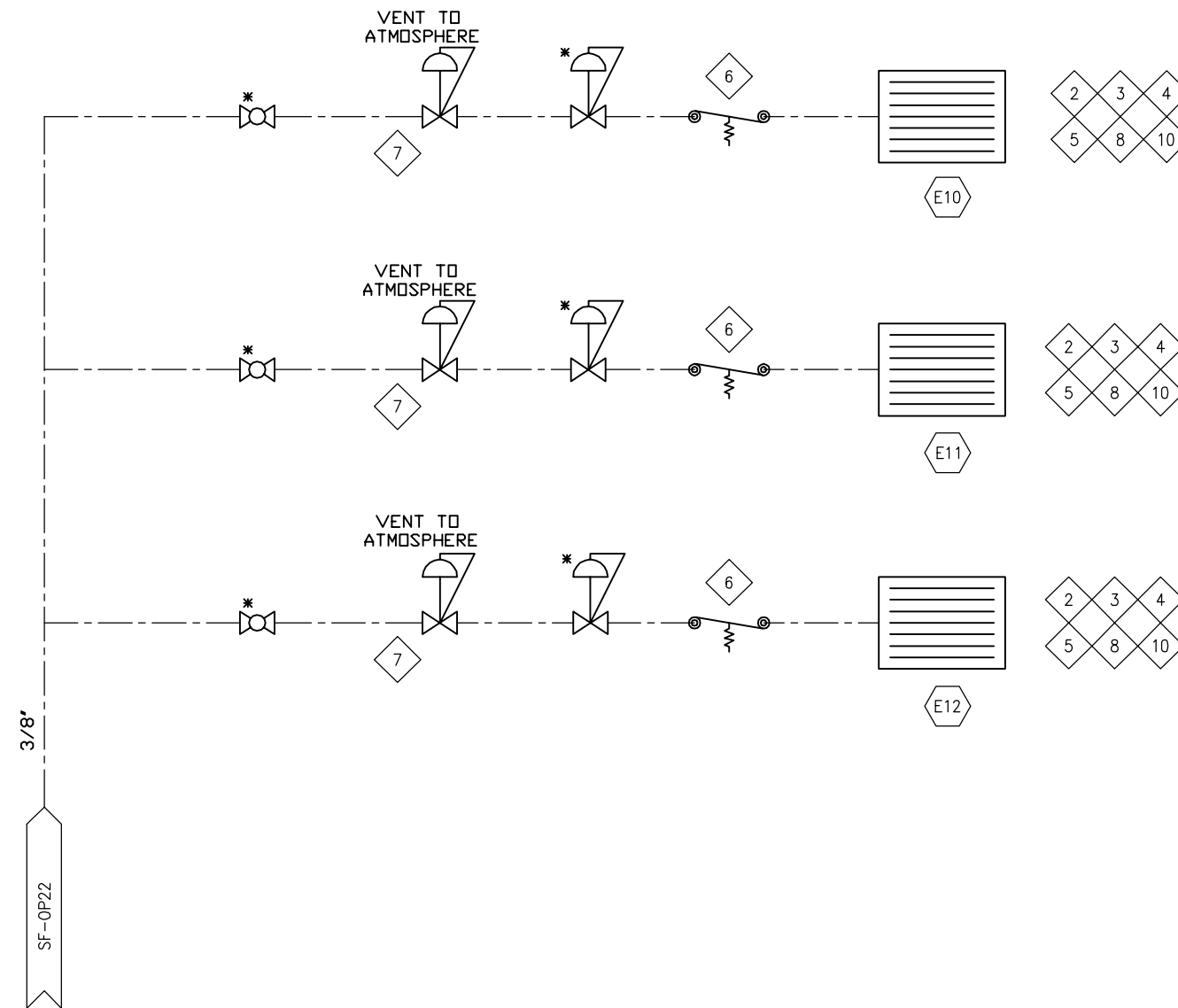
WX 18x24
12000 BTU/hr

**E11
BUILDING HEATER**

WX 18x24
12000 BTU/hr

**E12
BUILDING HEATER**

WX 18x24
12000 BTU/hr



BUILDING EQUIPMENT AND CONTROLS

OPTION SELECTION	OPTION NUMBER
<input type="checkbox"/>	
<input type="checkbox"/>	
<input type="checkbox"/>	
<input type="checkbox"/>	
<input type="checkbox"/>	
<input type="checkbox"/>	

BILL OF MATERIAL

ITEM	QTY	EFX CODE	DESCRIPTION
2	3	103497	HEATER, 12 MBTU, 12 VOLT C/W VALVE-H17CB-5 [CATADYNE, WX1824-0001]
3	3	109154C	SUPPORT, HEATER FLAT AS PER DWG #FM-12.14-D
4	3	109152C	SUPPORT, HEATER CABLE
5	3	103102	WIRE, XP, HEATER 12VDC, B & C-SERIES
6	3	103517	HEATER, THERMOSTAT [CATADYNE, AC-TC]
7	3	103515	HEATER, REGULATOR, 250 PSIG, 11" WC, 1/4" X 3/8" NPT [CATADYNE, AC-R-912]
8	3	103512	HEATER, PROTECTION GRILL, 18" X 24" [CATADYNE, AC-GRILL-1824]
10	3	103516	HEATER, STARTING CABLES, 25' SDW, 10 GA. C/W CLIPS [CATADYNE, AC-LEAD-25]
			BILL OF MATERIAL: M 108077 - ASSEMBLY, HEATERS, B400/401/530/570
			DATE-TIME EXPORTED: 2004-06-02-14.14

NOTES:

* SUPPLIED BY VENDOR

REV	DESCRIPTION	DATE	DRAWN BY	CHECKED BY
3	UNIT RENTED TO YOHO	18/01/12	DD	BH
2	UNIT RENTED TO ROSKA	17/06/20	TS	BH
1	SOLD UNIT	06/04/24	LHC	SS
0	ISSUED FOR CONSTRUCTION	05/10/21	LHC	SS

ENERFLEX

TITLE:		SERVICE FLOW BUILDING HEATERS CATADYNE B400/B401/B530/B570 (OP72)		
FOR:		ENERFLEX RENTALS		
CONSULTANT: -		RETROFIT JOB #: E002562-01		
P.O.: -		LSD: - JOB No.: 050903		
DRWN BY: GRT	DESIGN BY: -	DATE: -	DWG. No.	OP.#
DATE: 02/06/10	CHKD BY: -	DATE: -	SF-050903-72	72
SCALE: NTS	APPVD BY: -	DATE: -		